

### The Dalles Daily Chronicle.

SUBSCRIPTION PRICE.  
One week ..... \$ 15  
One month ..... 50  
One year ..... 6 00

TUESDAY, FEBRUARY 7, 1899

#### "BETTER THAN WHEAT"

Official statistics of the sugar production of Germany for the crop year of 1897-1898, have been published. They are very suggestive in the line of profit to the American beet-sugar industry, showing as they do that as long as our sugar duties remain operative, as at present, the cultivation of the beet sugar ought to be very profitable to American farmers. Manifestly, in Germany, a very large quantity of sugar is obtained from the beets raised on a comparatively small area of land. In the crop year covered by the returns, as published in Willett & Gray's sugar trade journal, there were 1,080,256 acres under sugar beets in Germany, and the "beets worked" aggregated 13,697,891 tons. The average yield, according to the official table, was 12.22 tons per acre. There were evidently some deductions made, as the average really figures out something more than this. The sugar production, based on raw sugar, is given at 1,844,399 tons, and it is stated that the yield averages 3763 pounds of sugar per acre.

These figures can be better understood by comparison. In the United States the sugar factories pay between \$4 and \$4.50 per ton for sugar beets. Reckoned at these rates and putting the yield at 12.22 tons per acre the beet farmer would obtain between \$49 and \$55 for the sugar beets raised on an acre of land, or more than four times as much as the average value per acre obtained by the wheat farmer for the product of their fields in 1897, when conditions favored an unusually profitable market. It may be said that beet culture has been reduced to a science in Germany. Relative limited area in that country, together with the fact that women and children work afield, induces intensive agriculture in a degree of which the great West, at least, of our own country knows nothing. The possibilities in this line, the probabilities, indeed, as shown by the figures presented, lead to the belief that in due time the sugar-beet industry of the country may outclass the wheat industry in profit, and the old term "better than wheat" find verification in the experience of the beet farmer.—Oregonian.

The Salt Lake Tribune is probably wrong in its assertion that the opposition to expansion is a sectional prejudice, based on the East's jealousy of the West. Most of the friends of annexation are in the West and most of its enemies in the East, but the East's hostility to it is not quite as great as is commonly supposed. Even New England, which was supposed to be solidly opposed to expansion, has many advocates of this policy. In this particular Senators Lodge and Frye are a fair offset to Senators Hoar and Hale. The vast majority of the people of the East as well as of the West are expansionists. There is no sectional line on this issue. The increased trade which the annexation of the Philippines will bring will not all go to the West. The whole country will share in it, as it will share in the power and prestige which expansion will confer on the nation.

It was a graceful act by Senator-elect Foster, of Washington, in preparing for his banquet at Tacoma on Tuesday, to invite all members of the legislature—those who opposed him, both within and without his party, as well as the friends who carried his banner to victory. The act was indicative of the breadth of the host, and will do much to re-establish a cordial feeling among all the members of the legislature, and also among the defeated candidates and their managers. It has been a mat-

ter of common observation at Olympia that Mr. Foster conducted his senatorial campaign with a remarkably slight expenditure of money. It seems that he has preferred to do his entertaining after the contest was over. This is an admirable example, and all the more commendable by reason that Mr. Foster is a man of independent fortune.

The attempt to make radical changes in the complexion and style of the American flag will not be successful. The people are willing that new territory should be added to the country and new plans of government devised, but "Old Glory" admits of no improvement.

#### Bismarck's Iron Nerve

Was the result of his splendid health. Indomitable will and tremendous energy are not found where stomach, liver, kidneys and bowels are out of order. If you want these qualities and the success they bring, use Dr. King's New Life Pills. They develop every power of brain and body. Only 25c at Blakeley & Houghton's drug store.

#### NOTICE FOR PUBLICATION.

LAND OFFICE AT THE DALLES, OREGON, January 19, 1899.  
Notice is hereby given that the following named settler has filed notice of his intention to make final proof in support of his claim, and that said proof will be made before the Register and Receiver at The Dalles, Oregon, on Saturday, Feb. 25, 1899, viz:  
Harmon S. Cheesman, of The Dalles, Oregon, H. E. No. 5045, for the lots 1 and 2, and the E 1/2 N W 1/4, Sec. 21, Twp 1 north, range 12 east, W. M.  
He names the following witnesses to prove his continuous residence upon and cultivation of said land, viz: J. W. Johnston, W. H. Calvin, D. Bunnell, H. Reidel, all of The Dalles, Oregon. JAY P. LUCAS, Register. Jan-21-11

#### A Beautiful Skin.

Ladies, if you desire a transparent, clear and fresh complexion use Dr. Bourdon's French Arsenic Complexion Waters. Their effect is simply magical, possessing the wizard touch in producing and preserving a beautiful transparency and pellucid clearness of complexion, shapely contour of form, brilliant eyes, soft and smooth skin where the reverse exists. Even the coarsest and most repulsive skin, marred by freckles, moth, blackheads, pimples, vulgar eruptions, yellow and muddy skin are permanently removed, and a deliciously clear and refined complexion assured.  
Price per small box, 50 cents; large box, \$1.00 or six large boxes, \$5.00. Sent to any address post paid and under plain wrapper upon receipt of the above amount. Write for free circular.

The Parisian Drug Co.,  
131 Montgomery St., San Francisco, Cal.

#### FRENCH & CO., BANKERS.

TRANSACT A GENERAL BANKING BUSINESS  
Letters of Credit issued available in the Eastern States.  
Sight Exchange and Telegraphic Transfers sold on New York, Chicago, St. Louis, San Francisco, Portland Oregon, Seattle Wash., and various points in Oregon and Washington.  
Collections made at all points on favorable terms.

#### PROFESSIONALS.

A. W. LUNDELL, B. M.  
Teacher of Vocal Culture.  
Sight Reading and Harmony.  
Studio at Residence, Cor. 6th and Liberty, Investigation office.  
THE DALLES, OREG.

DR. GEISENDORFFER  
Physician and Surgeon,  
Special attention given to surgery.  
Rooms 21 and 22, Tel. 828 Vogt Block

H. A. STURDEVANT,  
Dentist.  
Office over French & Co.'s Bank  
Phone 6, THE DALLES, OREGON

DAN ROBERTS,  
Attorney-at-Law.  
Collections a Specialty.  
Second Street, THE DALLES, OREGON.

MOLLIE V. O'LEARY,  
Art Studio.  
Room 3, Chapman Block.  
China painting a specialty.

Branch Office  
Oregon Viavi Company,  
Room 7, over French's Bank.  
Office hours, 2 to 4 p. m. Charlotte F. Roberts, Local Manager.

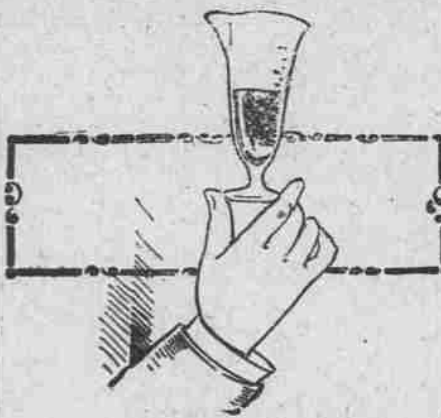
FRED. W. WILSON,  
ATTORNEY-AT-LAW,  
THE DALLES, OREGON.  
Office over First Nat. Bldg.

H. S. HUNTINGTON  
HUNTINGTON & WILSON,  
ATTORNEYS AT LAW,  
THE DALLES, OREGON  
Office over First Nat. Bank.

### DR. GUNN'S IMPROVED LIVER PILLS

Remove Pimples, Prevent Biliousness, Purify the Blood, Cure Headache and Dyspepsia. A movement of the bowels each day is necessary for health. They neither grip nor sicken. To convince you, we will mail sample free. Trial box for 5c. Sold by druggists. DR. BOSANKO CO. Phila. Pa.

#### A good drug sign.

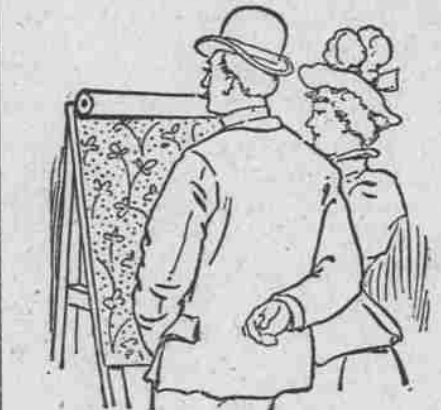


You well know that a good drug sign is the patronage which is bestowed on the store. It is the purity of the goods handled and the manner of doing business that makes and keeps this business. We are pleased with the result of our efforts to supply the best drugs at the best price. We are particular about the compounding of them.

Blakeley & Houghton

RELIABLE PHARMACISTS.  
175 Second Street. THE DALLES

#### Just What You want.



New ideas in Wall Paper here. Such wide variety as we are showing never before graced a single stock. Real imitation creton effects at ordinary prices. Good papers at cheap paper prices. Elegant designs, tasteful colorings, yours for a small price, at our store on Third street. Also a full line of house paints.  
D. W. VAUSE, Third St.

#### A Neglected Cold



is the forerunner of almost every ailment. It debilitates the system and leaves it an easy prey to disease. Loss of hearing and dimness of sight are among its ill effects.  
Our Syrup of Ear, Throat and Wild Cherry for Colds and Coughs is not only a cure but preventative. It tones up the system, increases the vitality and acts as a general bracer. Price 25c and 50c per bottle.  
But if you don't like our preparations we have all other kinds. We fill the doctor's orders too.

M. Z. DONNELL  
...DRUGGIST...

..CHAS. FRANK..  
Butchers  
and Farmers  
..Exchange..  
Keeps on draught the celebrated COLUMBIA BEER, acknowledged the best beer in The Dalles, at the usual price. Come in, try it and be convinced. Also the Finest brands of Wines, Liquor and Cigars.  
Sandwiches  
of all kinds always on hand.

### O. R. & N. CO

DEPART FOR	TIME SCHEDULE FROM DALLES.	ARRIVE FROM.
Fast Mail 11:50 p. m.	Salt Lake, Denver, Ft. Worth, Omaha, Kansas City, St. Louis, Chicago and East.	Fast Mail. 3:15 p. m.
Spokane Flyer 3:45 p. m.	Walla Walla, Spokane, Minneapolis, St. Paul, Du 1st St. Milwaukee, Chicago and East.	Spokane Flyer. 5:00 a. m.
5 p. m.	FROM PORTLAND. Ocean Steamships. For San Francisco—January 22 and every five days thereafter.	4 p. m.
8 p. m. Ex. Sunday Saturday 10 p. m.	Columbia Rv. Steamers. To ASTORIA and Way Landings.	4 p. m. Ex. Sunday
6 a. m. Ex. Sunday	WILLAMETTE RIVER. Oregon City, Newberg, Salem & Way Land's.	4:30 p. m. Ex. Sunday
7 a. m. Tues. Thur. and Sat.	WILLAMETTE AND YAMHILL RIVERS. Oregon City, Dayton, and Way Landings.	3:30 p. m. Mon., Wed., and Fri.
6 a. m. Tues. Thur. and Sat.	WILLAMETTE RIVER. Portland to Corvallis, and Way Landings.	4:30 p. m. Tue., Thur. and Sat.
Lv Riparia daily except Saturday.	SNAKE RIVER. Riparia to Lewiston.	LEAVE LEWISTON. daily except Friday.

Parties desiring to go to Heppner should take No. 4, leaving The Dalles at 5:30 p. m., making direct connections at Heppner junction. Returning making direct connection at Heppner junction with No. 1, arriving at The Dalles at 3:15 p. m.

No. 22, through freight, east bound, does not carry passengers; arrives 2:30 a. m., departs 3:30 a. m.  
No. 24, local freight, carries passengers, east bound; arrives 4:30 p. m., departs 3:15 p. m.  
No. 21, west bound through freight, does not carry passengers; arrives 8:15 p. m., departs 9:30 p. m.  
No. 23, west bound local freight, carries passengers; arrives 5:15 p. m., departs 3:30 a. m.  
For full particulars call on O. R. & N. Co.'s agent The Dalles, or address  
W. H. HURLEBERT,  
Gen. Pas. Agt., Portland, Or.

#### EAST and SOUTH via The Shasta Route

#### Southern Pacific Comp'y.

Trains leave and are due to arrive at Portland.

LEAVE	OVERLAND EXPRESS, Salem, Roseburg, Ashland, Sacto, Ogdun, San Francisco, Mojave, Los Angeles, El Paso, New Orleans and East.	ARRIVE
6:00 P. M.	Roseburg and way stations.	9 A. M.
6:30 A. M.	Daily except Sundays	4:40 P. M.
17:30 A. M.	Corvallis and way stations.	5:50 P. M.

INDEPENDENCE PASSENGER. Express train Daily (except Sunday).  
4:50 p. m. (Lv. Portland) Ar. 8:25 a. m.  
7:30 p. m. (Ar. McMinnville) Lv. 5:50 a. m.  
8:30 p. m. (Ar. Independence) Lv. 4:50 a. m.

\*Daily, except Sunday.  
DINING CARS ON OGDEN ROUTE.  
PULLMAN BUFFET SLEEPERS AND SECOND-CLASS SLEEPING CARS Attached to all Through Trains.

Direct connection at San Francisco with Occidental and Oriental and Pacific mail steamship lines for JAPAN and CHINA. Sailing dates on application.  
Rates and tickets to Eastern points and Europe. ALSO JAPAN; CHINA, HONOLULU and AUSTRALIA.  
All above trains arrive at and depart from Grand Central Station, Fifth and Irving streets.  
YAMHILL DIVISION.  
Passenger Depot, foot of Jefferson street.  
Leave for Sheridan, week days, at 4:30 p. m. Arrive at Portland, 9:30 a. m.  
Leave for AIRLIE on Monday, Wednesday and Friday at 9:30 a. m. Arrive at Portland, Tuesday, Thursday and Saturday, at 2:30 p. m.  
\*Except Sunday. \*\*Except Saturday.  
R. K. ELLER, G. H. MARKHAM, Manager, Asst. G. P. & Pass. Agt.  
Through Ticket Office, 134 Third street, where through tickets to all points in the Eastern States, Canada and Europe can be obtained at lowest rates from  
J. B. KIRKLAND, Ticket Agent, or N. WHEELDON.

#### 50 YEARS' EXPERIENCE PATENTS

TRADE MARKS DESIGNS COPYRIGHTS & C.  
Anyone sending a sketch and description may quickly ascertain our opinion free whether an invention is probably patentable. Communications strictly confidential. Handbook on Patents sent free. Oldest agency for securing patents. Patents taken through Munn & Co. receive special notice, without charge, in the  
**Scientific American.**  
A handsomely illustrated weekly. Largest circulation of any scientific journal. Terms, \$3 a year; four months, \$1. Sold by all newsdealers.  
**MUNN & Co., 361 Broadway, New York**  
Branch Office, 625 F St., Washington, D. C.

Fras Saunders has purchased the wood business of J. T. Reynolds in this city. Those desiring good wood will find him by ringing up phone number 12.

### C. J. STUBLING

Wholesale and Retail  
Wines, Liquors and Cigars.

Agency for the Greatest American Liquor

#### Yellowstone Sour Mash Whiskey.

WHISKEY from \$2.75 to \$6.00 per gallon. (4 to 15 years old.)  
IMPORTED COGNAC from \$7.00 to \$12.00 per gallon. (11 to 20 years old.)  
A LIPTONIA FRANKS from \$3.25 to \$6.00 per gallon. (4 to 11 years old.)

ONLY THE PUREST LIQUORS SOLD.

HOP GOLD BEER on draught, and Val Blatz and Hop Gold Beer in bottles Imported Ale and Porter.

JOBBERS IN IMPORTED and DOMESTIC CIGARS.

#### PIONEER BAKERY.

I have re-opened this well-known Bakery, and am now prepared to supply everybody with Bread, Pies and Cakes. Also all kinds of Staple and Fancy Groceries.  
**GEORGE RUCH, Pioneer Grocer.**

#### Modes and Fabric

We are ready to show them in Dry Goods, Notions, Clothing, Boots and Shoes, Ladies' Capes and Jackets. "Time enough" is a poor principle. Those who make the earliest selections secure best results. The stock is complete and new and we invite you to look at it.

e. f. Stephens.

#### Grandall & Burget

DEALERS IN  
All kinds of  
Funeral Supplies  
AND  
UNDERTAKERS  
AND  
EMBALMERS  
Robes,  
Burial Shoes,  
Etc.  
The Dalles, Or.

#### ...Spring Is Coming...

And F. S. GUNNING, the blacksmith, is prepared to put your buggies, plows and farm implements in proper shape.

Second and Laughlin Streets,  
Phone 157. THE DALLES, OREGON.

#### Simplicity Durability Rockford "Quick Shot" Quick Sellers No Complaints

12-Plate Magazine Camera.  
"Turn the lever and you are ready for another." No plate holders with slides to draw. No sleeve or changing bag. No chance to fog plates. No failures.  
If you want 12 pictures quick, buy the "Quick-Shot," the only magazine camera that holds the plates securely after they are exposed. No rattling or breaking of plates. Best on earth.  
3 1/4 x 4 1/4 ..... \$6.00  
4x5 ..... \$9.00  
With one dozen plate holders.  
Manufactured under the Conley patents by the  
**Rockford Silver Plate Co.,**  
ROCKFORD, ILL.  
We sell only through local agents. Ask our agents to show you this "Quick shot."  
**The Snipes-Kinnersly Drug Co.**  
AGENTS, The Dalles, Oregon.

#### Advertise in...

The... **Chronicle**