

The Dalles Daily Chronicle.

Subscription Price.
One week \$ 15
One month 50
One year 6 00

SATURDAY - DECEMBER 3, 1898

BRIGHT FUTURE FOR OUR NAVY

The report of the secretary of the navy, for the first time in our history, is bound to attract more attention than that of any other cabinet officer. Every nation that has a navy of any importance is eager to learn what the United States intends to do in the way of naval construction, and the American people themselves are thinking far more about the navy than any other department of the government.

The people will be interested in the authoritative and official story of the great naval engagements of the war and in the administrative reforms recommended by Secretary Long; but in Europe the main interest will be in the recommendations to increase the navy. Recognizing as inevitable the expansion of our sovereign rights over Porto Rico, Cuba and the Philippines, Secretary Long recommends the construction of three first-class, heavily armored, sea-going battleships, three armored cruisers of the largest class, three others of the class of the Olympia, (Admiral Dewey's flagship), and six of lighter draft than the Raleigh and the Boston. Each of the battleships are to be sheathed and coppered, to have a trial displacement of 12,500 tons, to be fully armored and to carry the most powerful ordnance. The estimated cost, not including armor and armament, is \$3,600,000 each. Our largest battleship in commission, the Iowa, has a displacement of 11,340 tons. England's largest battleships, of the Majestic type, have a displacement of 14,900 tons each. The largest battleships of France have a displacement of 12,205 tons each; Germany, 11,130 tons each; of Russia, 12,540 tons each. The new battleships recommended by the secretary of the navy will be larger than any others afloat, except the largest battleship of England.

The three large cruisers will have a trial displacement of 12,000 tons each and will be expected to develop the highest practical speed and the greatest radius of action. The estimated cost, exclusive of armor and armament, is \$4,000,000 each. The Brooklyn, the largest of our armored cruisers in commission, has a displacement of 9,215 tons; the New York a displacement of 8,200 tons. The three large cruisers recommended by the secretary of the navy will be larger than the new cruisers ordered by Great Britain. The largest armored cruiser of Spain, the Dupuy de Lome, has a displacement of 6,300 tons. Russia's largest armored cruiser has a displacement of 7,782 tons.

The three sheathed and coppered protected cruisers are to have a trial displacement of 6,000 tons each. The estimated cost exclusive of armor and armament, is \$2,150,000 each. The six sheathed and coppered protected cruisers of lighter draught are to have a trial displacement of 2,500 tons, with an estimated cost exclusive of armor and armament, of \$1,141,000 each. The fifteen vessels recommended by the secretary call for an expenditure of \$36,100,000.

These fifteen vessels are in addition to the three battleships, Maine, Missouri, and Ohio, the four monitors, and the twenty torpedo boat destroyers ordered by the last congress. We have in course of construction the battleships Kearsarge, Kentucky, Illinois, Alabama and Wisconsin. All of these are heavier than the Iowa, each having a displacement of 12,525 tons. The Maine, the Missouri and the Ohio are to have a displacement of 13,500 tons each.

If the recommendations of the secretary of the navy are adopted, as every consideration demands that it should be, we shall have in the near

future fifteen first-class battleships, one second-class battleship, and twenty-six armored and protected cruisers. We have now in commission four battleships of the first class, one of the second class, two armored cruisers, twelve protected cruisers and three unprotected cruisers. The program outlined by Secretary Long will give us a navy well up toward the standard of France, and, adequately supplemented in subsequent years, will put us third in the list of the naval powers of the world.

When you ask for De Witt's Witch Hazel Salve don't accept a counterfeit or imitation. There are more cases of piles being cured by this than all others combined.

O. R. & N. CO

DEPART FOR	TIME SCHEDULE FROM DALLES.	ARRIVE FROM.
Fast Mail 11:50 p. m.	Salt Lake, Denver, Ft. Worth, Omaha, Kansas City, St. Louis, Chicago and East.	Fast Mail. 3:10 a. m.
Spokane Flyer 5:20 p. m.	Walla Walla, Spokane, Missoula, St. Paul, Duluth, Milwaukee, Chicago and East.	Spokane Flyer. 6:50 a. m.
8 p. m.	FROM PORTLAND. Ocean Steamships. All sailing dates subject to change. For San Francisco—Nov. 25, Dec. 2, 9, 13, 18, 22, 28, Jan. 2, 7.	4 p. m.
8 p. m. Ex. Sunday Saturday 10 p. m.	Columbia Rv. Steamers. To Astoria and Way Landings.	4 p. m. Ex. Sunday
6 a. m. Ex. Sunday	WILLAMETTE RIVER. Oregon City, Newberg, Salem & Way Landings.	4:30 p. m. Ex. Sunday
7 a. m. Tues, Thurs. and Sat.	WILLAMETTE AND YAM-HILL RIVERS. Oregon City, Dayton, and Way-Landings.	3:30 p. m. Mon., Wed., and Fri.
6 a. m. Tues, Thurs. and Sat.	WILLAMETTE RIVER. Portland to Corvallis, and Way-Landings.	4:30 p. m. Tues, Thurs. and Sat.
By Riparia daily except Saturday.	Snake River. Riparia to Lewiston.	LEAVE LEWISTON. daily except Friday.

For full particulars call on O. R. & N. Co.'s agent The Dalles, or address W. H. HURBERT, Gen. Pass. Agt., Portland, Or.

Regulator Line

The Dalles, Portland and Astoria Navigation Co.



Strs. Regulator & Dalles City

FREIGHT AND PASSENGER LINE

BETWEEN The Dalles, Hood River, Cascade Locks and Portland daily, except Sunday.

Are you going DOWN THE VALLEY OR TO EASTERN OREGON?

If so, save money and enjoy a beautiful trip on the Columbia. The west-bound train arrives at The Dalles in ample time for passengers to take the steamer, arriving in Portland in time for the outgoing Southern and Northern trains; East-bound passengers arriving in The Dalles in time to take the East-bound train. For further information apply to J. N. HARNEY, Agent, Oak Street Dock, Portland, Oregon, Or W. C. ALLAWAY, Gen. Agt., The Dalles, Oregon.

LANE BROS.
GENERAL
Blacksmiths
...AND...
Horseshoers.
Wagon and Carriage Werk.
Fish Brothers' Wagon.
Third and Jefferson. Phone 159

...It's All In a Nut Shell...



It is a chance that has not occurred for many years—to buy Men's and Boy's wear, the quality for the money which is being offered by us.

Remember this will last but a short time longer

Post yourself on prices elsewhere and then call on us. We will sell you clothing which has been manufactured for city trade for less than you can buy cheap clothing.

- ALL-WOOL BOY'S SUITS, SIZES FROM 4 TO 12, - - - - - AT \$1.25.
- ALL-WOOL YOUNG MEN'S SUITS, SIZES 12 TO 19, - - - - - AT 4.00.
- ALL-WOOL MEN'S SUITS, ALL SIZES, - - - - - AT 5.50.
- BLACK AND BLUE OVERCOATS, SILK LINED, - - - - - AT 6.50.
- EXTRA HEAVY AND EXTRA LONG MEN'S ULSTERS, - - - - - AT 6.00.
- BLACK ALL WORSTED SUITS, all CUTS AND STYLES, - - - - - AT 7.50.

In underwear and overshirts all we ask of you is to examine them and our prices and you will be convinced that you have never been offered anything of the kind for the money.

All-wool Blankets, extra sizes, at \$3.50.

HATS. All we ask of you is to examine our styles and and prices.

THE WHITE HOUSE CLOTHING CO. of PORTLAND

No. 166 Second Street,

W. A. Johnston's Old Stand, - **THE DALLES, OREGON**

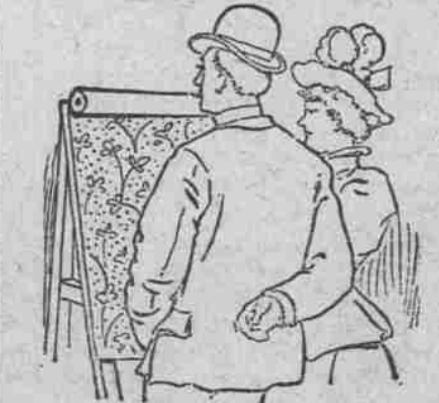
Drugs.



The importance of having prescriptions filled with drugs of absolute and undoubted freshness impels us to urge you to allow us to do the compounding. The benefits accruing to the sick will be greater, the cure speedier and the cost to those paying the bills less. There is no possibility of mistakes in our prescription department.

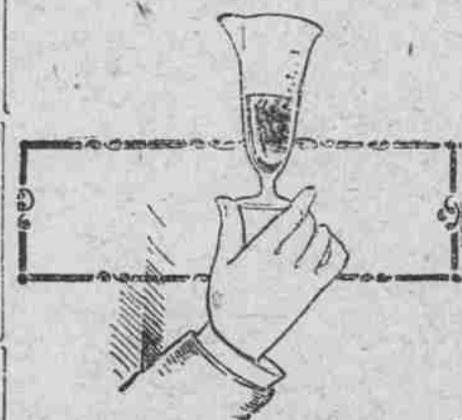
M. Z. DONNELL
...DRUGGIST...

Just What You want.



New ideas in Wall Paper here. Such wide variety as we are showing never before graced a single stock. Real imitation creton effects at ordinary prices. Good papers at cheap paper prices. Elegant designs, tasteful colorings, yours for a small price, at our store on Third street. Also a full line of house paints.

A good drug sign.



You well know that a good drug sign is the patronage which is bestowed on the store. It is the purity of the goods handled and the manner of doing business that makes and keeps this business. We are pleased with the result of our efforts to supply the best drugs at the best price. We are particular about the compounding of them.

Blahely & Houghton

RELIABLE PHARMACISTS.
175 Second Street. THE DALLES.

..COAL..
\$6.50 PER TON DELIVERED.

For car load lots call on **E. KURTZ, Agent,**
Tel. 38. The Dalles, Or.

PIONEER BAKERY.

I have re-opened this well-known Bakery, and am now prepared to supply everybody with Bread, Pies and Cakes. Also all kinds of Staple and Fancy Grocer es.

GEORGE RUCH, Pioneer Grocer.

War or No war

You will always have the benefit of Low Prices at

Andrew Keller's Cafe.

Ice Cream, Ice Cream Soda, Candies, Fruits, Nuts and Oysters in any style.

C. J. STUBLING

Wholesale and Retail
Wines, Liquors and Cigars.
Agency for the Greatest American Liquor

Yellowstone Sour a sh Whiskey.

WHISKEY from \$2.75 to \$6.00 per gallon. (4 to 15 years old.)
IMPORTED COGNAC from \$7.00 to \$12.00 per gallon. (11 to 20 years old.)
AL ITOENIA BRANDIES from \$3.25 to \$6.00 per gallon. (4 to 11 years old.)

ONLY THE PUREST LIQUORS SOLD.

HOP GOLD BEER on draught, and Val Biatz and Hop Gold Beer in bottles. Imported Ale and Porter.

JOBBER'S IN IMPORTED and DOMESTIC CIGARS.