

1923 WILL BE BIG CONVENTION YEAR FOR ROSE CITY

Largest Will Be That of Dramatic Order of Knights of Khorassan in August.

Conventions of national organizations will draw the nation's attention to Portland and Oregon many times during the season of 1923, while state and regional conventions will swell the crowds of visitors coming to the city to a still greater extent.

Although only tentative schedules of the conventions to be held in Portland are obtainable as a guide to the number of gatherings which will be held in this district, the list proves beyond a doubt that 1923 will result in more people coming to Oregon to attend gatherings than for many years, with the possible exception of 1920, when the Shrine convention was held in this city.

GAINS REPUTATION

The reputation which the city made for itself through the hospitality shown the nobles of the Shrine has been responsible to a major extent in making Portland a favorite for organizations planning national conventions.

Of the 1923 conventions, there are three outstanding meetings, which not only will result in making Portland the focus point for the nation, but also will bring between 25,000 and 30,000 visitors to the city from all parts of the United States and some foreign countries.

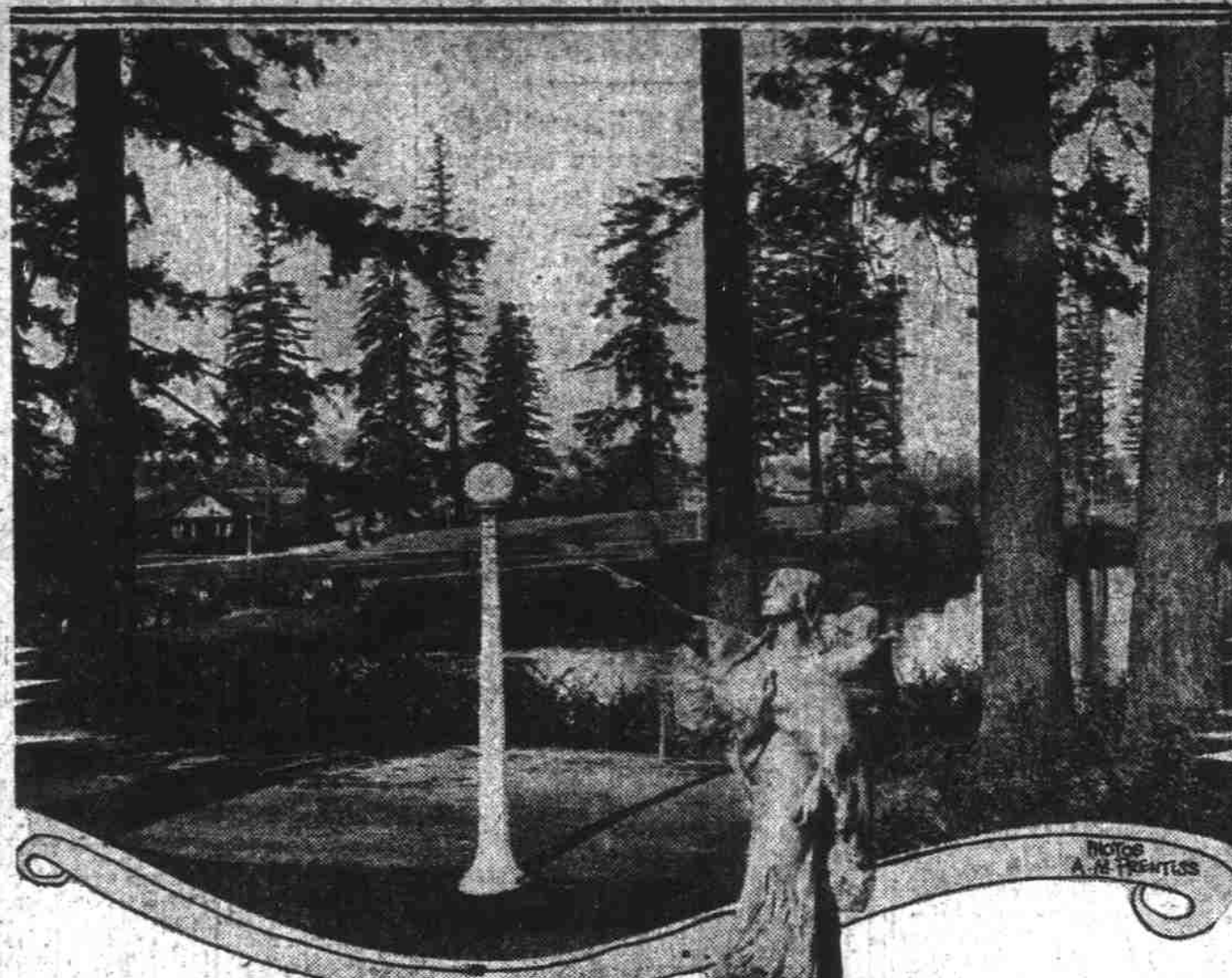
In point of numbers, the biennial convention of the Dramatic Order Knights of Khorassan, high order of the Knights of Pythias, will bring the largest number of delegates to the city. Committees of the local chapter of this organization have been making preliminary preparations for this convention for several months.

MANY KNIGHTS COMING

Local members of the Knights of Khorassan report that between 20,000 and 25,000 visitors will be brought to the city for this convention. In 1921, the biennial convention at Chattanooga, Tenn., resulted in the attendance of more than 15,000 members of the organization.

This convention is scheduled for August and it is planned to have it handled in much the same manner in which the famous Shrine convention of two and one half years ago was handled. It has been reported that 35 bands and between 40 and 50 patrols will be present for the convalescence.

PORTLAND PARKS RICH IN BEAUTY



Above—View in Laurelhurst park. Below—Bronze statue of Sacajawea, the Indian woman guide of the Lewis and Clark expedition, which graces Washington park.

some of whom came from Europe and the American possessions. In all it is estimated that 1200 representatives directly interested in the convention will

CLUBS TO MEET

Still another convention, which annually is drawing more and more attention from the nation, will be the national convention of Business and Professional Women's clubs, which will convene here July 9 to 15. Miss Adella Pritchard is chairman for Oregon in charge of arrangements for the convention.

A review of conventions during the past few years has caused local committee workers to estimate that a total of about 2000 delegates will attend the business women's convention.

While this convention is in session there also will be the convention of the American Association of University Women, which will be in session July 10 to 14. About 200 delegates will attend this meeting.

OTHERS SCHEDULED

Three church conventions are listed for the coming year with more in prospect. The three already named are the state Baptist convention in May, the state United Evangelical convention in May and the state Methodist convention in September.

Other conventions already listed are: State Retail Merchants' association in February; Loyal Legion, state commandery, in May; Order of Eastern Star in June; A. F. and A. M. grand lodge, June 13, and National Park to Park Highway association, June 15 and 17.

Several conventions have been named for the year, but no definite date for them to convene has been set. Among these will be the Women's Benefit association, Northwest Real Estate convention, Pacific Claim Agents' association and several others.

CONVENTIONS OF 1923

During 1923 there were numerous state and regional conventions held in Portland and scarcely a week passed without some lodge or church organization holding a convention, assembly or convalescence in the city. The number of national conventions was comparatively small as compared with former years.

Outstanding over all other conventions held during the year was the triennial general convention of the Episcopal church. For this convention approximately 5000 delegates attended and remained in the city for three weeks.

Second in importance of the year's conventions was the annual meeting of the International Bankers' association. Bank heads from all parts of the country attended this meeting. Several special trains brought bankers from New York, Philadelphia and Chicago. Closed with conventions was the annual Buyers' week, which brought merchants of 14 Western states to Portland. A large part of the community convention energy likewise was devoted to the entertainment of delegations passing to and from convention cities on the coast. Notable in this latter group were the Traveling Business Agents and the Shrine.

BUREAU OF PARKS IS BUSY ALL YEAR WITH ITS PLANS

Superintendent Looks Far Into Future in Laying Out Recreational Centers in the City.

By Florence Holmes Gerke, Of Bureau of Parks

The bureau of parks has maintained a busy program of recreation and landscape development during the year just closed, meeting the increasing demands of a growing city.

C. P. Keyser, superintendent, has issued the following statement:

"Consistent progress and development of our recreational system has been the program of the city administration directing the bureau of parks during the year just closed. It will be remembered that a bond issue of \$500,000 was authorized by the electorate in 1919 for broad extension of the system of neighborhood parks and playgrounds. Purchase of properties on this authority was completed this year and Portland now stands pre-empted in this type of recreational facility.

FLAWS AHEAD

"In addition there were several gifts of tracts of high scenic value, notably twenty acres in Benson Park including parking area and lower Multnomah Falls, which was presented to the public through the generosity of the Union Pacific system.

The bureau is operating on a broad basis, not of the moment, or for the present generation merely, but relating to the planning and development of the city for years to come. The history of municipalities has demonstrated that in order to have adequate breathing spaces, a city must be forearmed in acquisitions.

"It is evident also that many waste spaces or areas of little industrial or commercial value having been pre-empted to the uses of play and leisure, have in time become invaluable to the citizens as parks, a case in point being

NOT BOULEVARD CITY

"Nearly every city has at least one parallel case. Portland has been particularly fortunate in the last decade, both as the recipient of gifts and in the opportunity for foresightfulness in the acquisition of neighborhood playgrounds.

"Portland is not a boulevard city like Chicago or Kansas City, but the advent of motor transportation together with the development of the highways, in the 'motorists' paradise, have made the requirements for this form of civic beautification less urgent—that is, the need for a large area for field sports, aquatic sports and public golf has demanded prior attention.

"If there is only one Yosemite there is also only one Columbia gorge. New York has its Palisades park on the Hudson, and Oregon will have its incomparably more magnificent Columbia Gorge park.

WORK INCREASES

"With Benson park at a beginning, joined to the Oregon forest reserve, with a broad policy of public recreation and the development of Mount Hood loop, we can devote ourselves more particularly to working out play and recreation for the children, old, middle-aged and young, who are short of yard room and company even in our city of roses, notable as a city of homes."

Neighborhood parks and playgrounds increase in importance as Portland's population grows, and the bureau of parks is crowded to capacity to equip and maintain the community play areas. The playgrounds have had splendid patronage, have called forth the men and women as well as children for ball games, picnics, entertainments and exercise.

PARK POPULAR

Irving park, at Seventh and Fremont streets, is a newly developed neighborhood park which has already justified its construction. The park includes two ball fields, playgrounds, space for tennis courts and generous walks and lawn space. It is built on rolling ground which offers a view of Mount Hood and Mount St. Helens. Planting was started last fall and will be completed this winter. The playground takes the place of the old Lincoln playground, which was a crowded block adjacent to the Albina Homestead school and now turned over to the school board.

Baseball and playground ball have become increasingly popular on the city playgrounds. Ball fields are in

MANY PLAY BALL

The playground league hall 1000 players during the summer season. These include the 6-year-olds, the juniors, high school students and young men and women who are at work during the day but who enjoy a game in the evening hours.

In the landscape department much time has been given over to the municipal rose garden which is being developed at Washington park. This great formal garden, which will include millions of roses, is gradually taking shape.

The theatre, a crescent shaped auditorium, has been built, and the terraces and stage seeded and planted with shrubs which will give it the proper setting. From the theatre the spectator may look beyond the stage to the city and Mount Hood, so that it will always offer an interesting spectacle even though it may be officially "dark."

GOLF GROWING

The Rosarian court has been built and each Rosarian has been assigned a special rose which is to represent him in the garden. Jesse A. Currey, who has selected the roses, has chosen the finest varieties of the rose world for this court.

Hotel Rowland and Annex
A. DIETZ, Manager

Modern and Fireproof

Oregon Electric and Southern Pacific Cars Pass Door
165 ROOMS
Rates 75c to \$2.00 Per Day
207 1/2, 209 1/2, 211 1/2
FOURTH STREET
Phones Atwater 0458, 0459
PORTLAND, OREGON

Hotel Benson

Portland's Finest Hotel

Rooms Elegantly Furnished

Three Beautiful Dining Rooms Cuisine and Service Unsurpassed

KELLER & BOYD
Owners and Operators

PERCY F. SMITH, Manager

We wish our patrons a Happy New Year

The
Campbell-Hill
A First Class
Residential Hotel

741 Washington St. Phone Main 7584
PORTLAND, OREGON

HOTEL FRANKLIN
WASHINGTON AT THIRTEENTH
PORTLAND, OREGON

The place where you feel at home.

Central Location
Clean and Comfortable
\$1.00 Per Day and Up
Special Rates by the Week
Telephone Connection

Steam Heat
Electric Lights
Phone in Rooms
All-Night Service
Ground Floor Lobby
Free Tub and Shower Baths

HOTEL MORRIS
MR. AND MRS. H. M. BRANSON, Proprietors
Tenth at Stark Street, Portland, Oregon

Convenient to Business, Shopping and Amusement Districts

See the Pacific Northwest—the Summer Playground of America!

Telephone Broadway 7723 Absolutely Fireproof

Hotel Goodwin
Under Personal Management of
M. L. GOODWIN

SPECIAL WEEKLY AND MONTHLY RATES

92 Park St., Portland, Or.
Bet. Stark and Oak, 1 Blk. off Broadway

Tour Home Away From Home
Heart of Business District
Excellent Sample Rooms