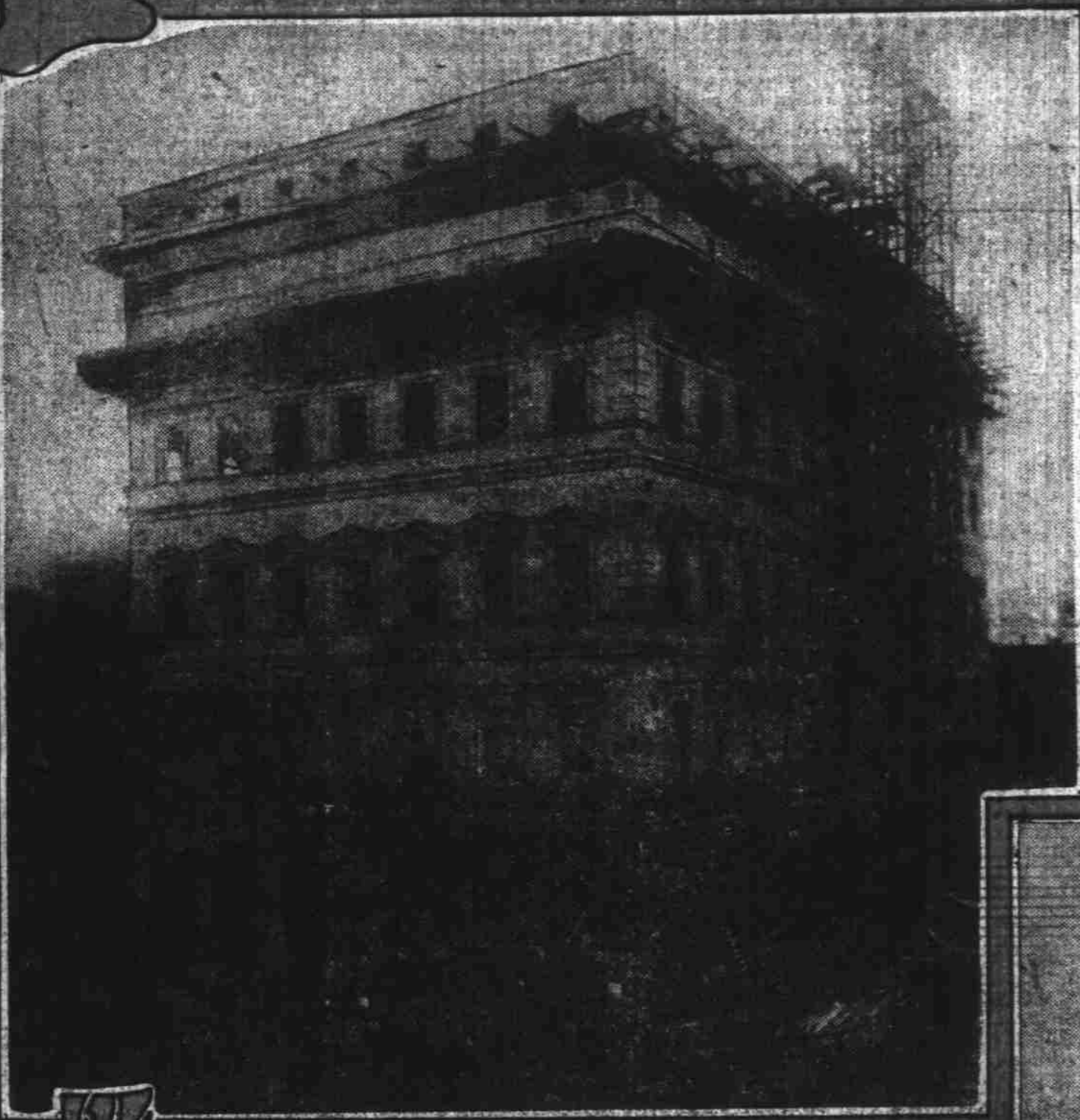
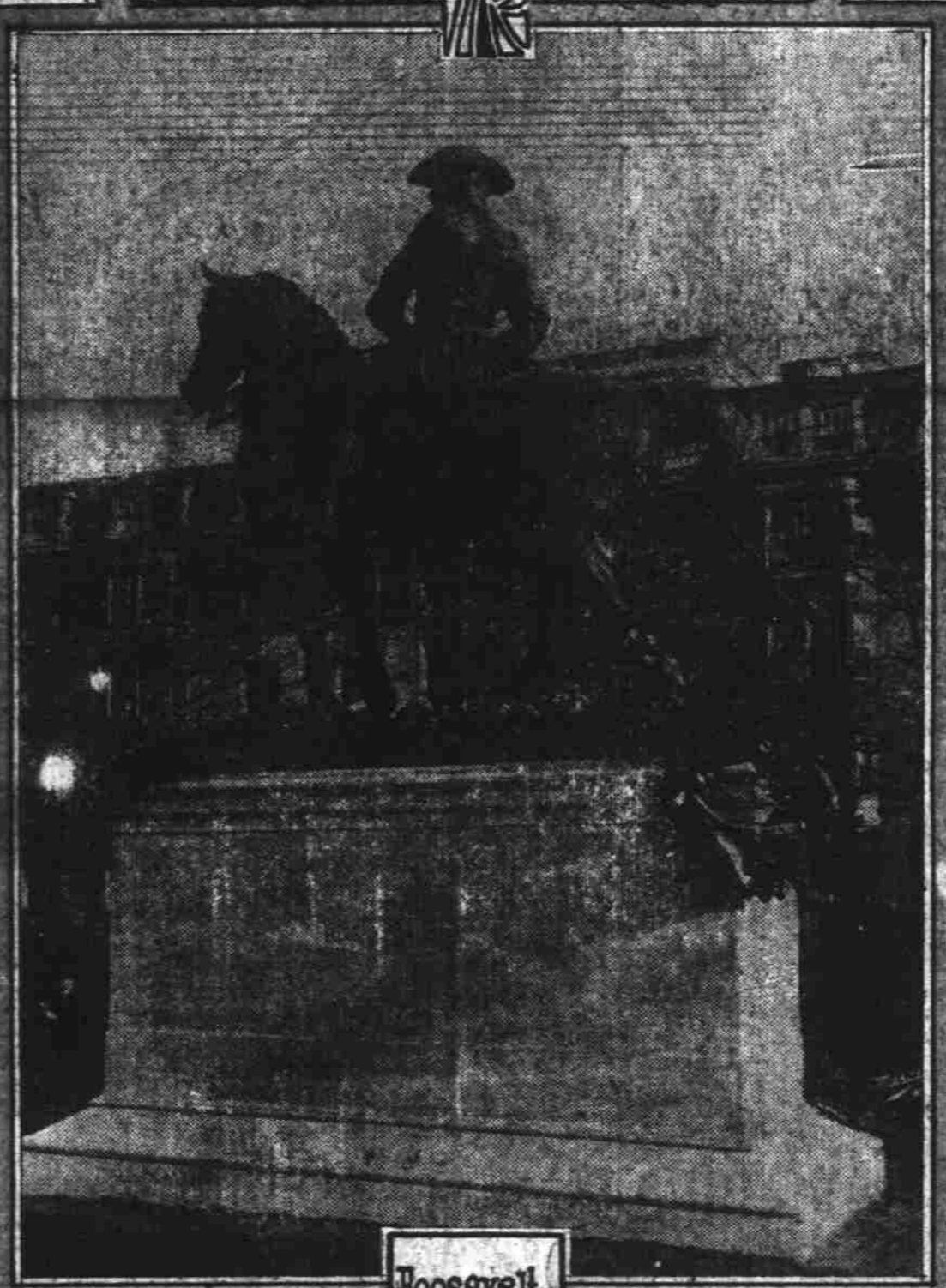


PORTLAND, OREGON, SUNDAY MORNING, DECEMBER 31, 1922.

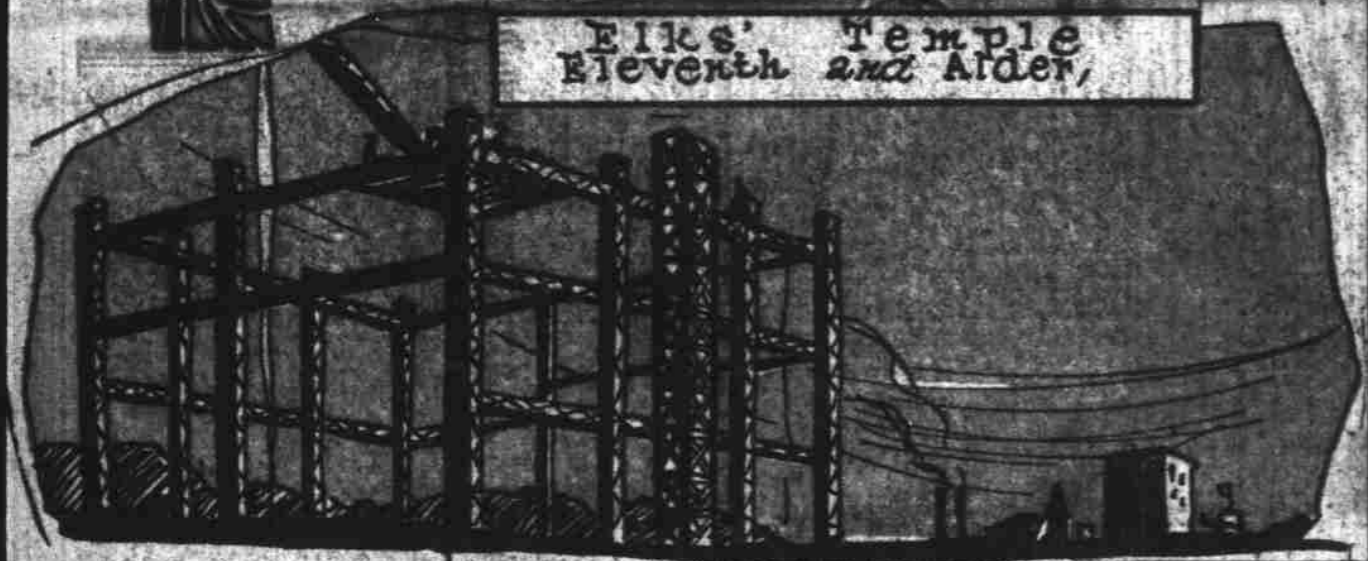
Portland



Among Portland's
New Structures
of 1922,



Roosevelt
Statue,
MARCEL



Eike's Temple
Eleventh and Alder,



Ambassador Apartments
Sixth and Madison



Sovereign
Hotel
Broadway
and Madison



J. K.
Gill Co.
Building
Fifth
and Stark