

ONE-THIRD NATION'S POTENTIAL HYDRO-ELECTRIC POWER IN COLUMBIA RIVER AND TRIBUTARIES

PROJECTS for canalization of the Columbia are being pressed before congress and among civic and official bodies of Oregon, Washington and Idaho for the purpose of using the West's great river for power, irrigation and navigation. All streams of United States together have some 60,000,000 potential hydro-electric horse power. Columbia river system alone represents more than 20,000,000 potential horse power of hydro-electric energy. Umatilla project alone would generate from 250,000 to 500,000 horse power, enough to make electricity cheaper in Portland than any other form of light, fuel for heating or energy for manufacturing plants. Power dam would canalize river to mouth of Snake and divert water for irrigation of more than 200,000 acres. Views show where Hill lines to Central Oregon cross Columbia on bridge above rapids at Celilo; entrance to Celilo canal, for which government spent \$5,000,000 without attempt to use by-product of electric energy, and scene near Mosier giving idea of effect from canalization.



Millions Spent for Power Oregon Has Biggest System

Major projects in electrical development in Oregon during the year just closing, from the construction standpoint, are the initial work by the Portland Railway, Light & Power company on a \$10,000,000 plant on the headwaters of the Clackamas, the erection by the Pacific Power & Light company of an 8000 horsepower plant on the lower reaches of Hood river and the completion of a high power transmission system through Prospect, on the headwaters of Rogue river, to Springfield, at the head of the Willamette valley.

The completion of this system makes interconnection between companies serving the Willamette valley on the north and companies serving California and Western Arizona and Nevada on the south.

LARGEST IN WORLD

This creates the largest simultaneously operated power system in the world. The line from Springfield to Prospect was built and is operated by the California-Oregon Power company. It was constructed for the purpose of selling electrical energy to the Mountain States Power company, serving territory between Eugene and Independence.

Plans are already under way to connect the system in the neighborhood of Eugene and Independence to the system of the Portland Railway, Light & Power company and add all the electrical industry from Portland as far east as The Dalles, Hood River and Wasco in Sherman county to the great Pacific coast trunk transmission system.

The new plant being erected by the Pacific Power & Light company on Hood river will cost, according to the estimate, \$1,250,000 and will have a capacity of 8000 horsepower. It will be modern and up to date in every respect. Water is diverted from Hood river at the mouth of Neal creek, about two and one half miles south of the city, and carried down the Hood river canyon through a large wood stave and steel pipe line to the power house which is located adjacent to the city limits and within sight of the Columbia river highway bridge.

This plan is to be used by the Pacific Power & Light company to supply wholesale power to Portland and also for the purpose of taking care of the rapidly growing business of the Pacific Power & Light company in The Dalles-Hood River district.

DEVELOPING HOLDINGS

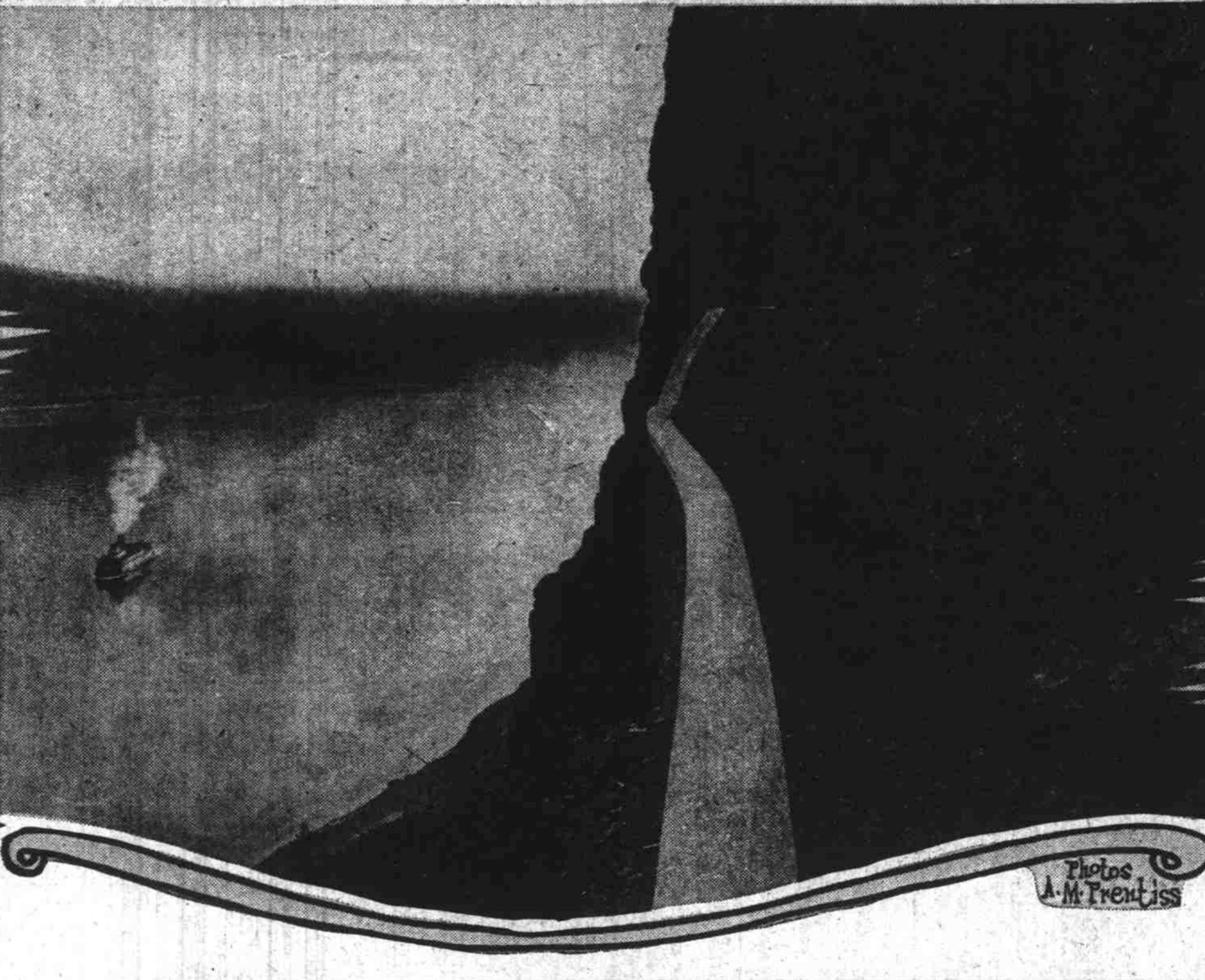
To enable it to take care of its ever increasing peak load and keep pace with the demand for power from the new industries of Portland, the Portland Railway, Light & Power company has actively begun to develop its Clackamas river holdings, a work which has been in contemplation for several years. The power generated at this plant will be added to the existing system of the company at the Cascade plant. The plant will ultimately consist of three units with a combined production of 100,000 horsepower. It will displace to a large extent the present steam generation of the company.

The cost of the first development is estimated at \$4,700,000. The ultimate expenditure will be approximately \$10,000,000 and the entire project will not be completed until July, 1924.

An unusual feature is that the first stage of development is the construction of a highway on which to truck in supplies and material for the plant. This highway, which will be on standard lines and grades, will be 25 miles in length and will cost approximately \$1,000,000. The construction, which is very heavy, is similar to that of the Columbia river highway.

Agents for
FLUHAER SHINGLES
Lensch Bros.
Flour, Feed, Hay, Groceries and Produce
241 Front Street
COR. MAIN, PORTLAND, ORE.
PHONE MAIN 2499

K. E. Karlson & Company
L. A. Crawford, Proprietor
Designers and Makers of
APPLIANCES ORTHOPEDICAL
and
SURGICAL INSTRUMENTS
NEW DESIGNS, SHARPENING, REPAIRING AND REPLACING
Experience Gained in Leading European Factories
Work Guaranteed Equal to Foreign or American Make
Established 1905
100 Thirteenth St.
PORTLAND, OREGON
BROADWAY 3613



20 miles south of the mouth of the Deschutes river. Guy W. Talbot, president of the company, has announced that this plant is scheduled for early construction, and that at the same time the plant is being constructed a high transmission line will be built from The Dalles by the plant to Umatilla, where it will connect with the line extending from Kennewick to Pendleton.

"This important trunk line will not only tie together the two systems of the Pacific Power & Light company, but will also bring into connection with the main Pacific coast transmission system the very large additional mileage of transmission lines, including all the lines of the Pacific Power & Light company in the Yakima-Walla Walla territory, the lines of the Chicago, Milwaukee & St. Paul railway across Washington, a great network of power lines of the Puget Sound Power & Light company extending from Tacoma north to the Canadian line, and also the systems of the Washington Water Power company, covering a large part of Northeastern Washington. The connection contemplated by the Pacific Power & Light company will add a great many hundred miles of new lines to the Pacific coast trunk system. It is expected that the line from Kennewick to Pendleton will be built this winter. The plant on the Deschutes river will cost more than \$5,000,000."

The Bend Water, Light & Power company has announced its intention of developing new power either on the Deschutes river or Tumaio creek.

Drayage Service
—that can be relied upon eliminates one of the annoying problems of business
Clay S. Morse
Inc.
WE CAN move anything. No task is too large or too small for our careful and thorough execution. Hauling heavy loads and erecting machinery are two of our specialties. We also move, pack and store household goods. We handle carload shipments on our own sidetrack. Our storage warehouse has modern equipment and sprinkling protection, so that goods stored there take a low insurance rate. We offer you a complete service, which means that we look after all the details of moving, packing or storing anything.
Draymen Warehousemen Forwarders
Hoisting, Moving and Heavy Hauling
Pool Cars a Specialty
Phone **3470**
448-546 Glesson St.
Portland, Oregon

Iron and Steel Products
If you are in the market for Steel, it will pay you to write or call us up.
H. B. Davis Iron & Steel Co.
Office and Warehouse 388-390 FRONT STREET Phone Atwater 2446
Warehouse and Yard With Private Trackage Lincoln, Hood and Great Sts. PORTLAND, OREGON

John Welch Dental Depot
Complete Line of
Dental Supplies
and
Patients' Requirements
Second Floor, Broadway and Oak
Opposite Benson Hotel

Porter's P
Porter-Scarpelli Macaroni Co.
PURE PASTE PRODUCTS.
Made Under Sanitary Conditions
Tel. Walnut 4973
KENTON STATION
PORTLAND, OREGON

Curtis Brothers, Inc.
Successors to A. D. Moodie House Moving Co.
House Movers
A full set of the latest improved machinery for raising and moving buildings, boats and other heavy work.
Brick Buildings a Specialty
Office and Residence Phone Yard 595 Gideon Street
Sellwood 1165—Phone—Sellwood 2766

Wilson's Auction House
Dealers in Used and New Furniture of the Better Kind
169-171 Second St.
Near Morrison
PHONE MAIN 1626
PORTLAND, OR.

White Wizard Washing Compound
Washes your clothes without rubbing and will not harm the most delicate fabrics, as it contains no lye or injurious chemicals. Cleans woodwork in a manner that is positively astonishing.
Manufactured by
WHITE WIZARD CO.
388 East Washington St. Phone East 7120. Portland, Oregon
For Sale at Groceries and Department Stores
AGENTS WANTED OUTSIDE OF PORTLAND
Free Samples on Request

Columbia Wire and Iron Works
All Kinds of Wire and Iron Work.
E. 8th and Market Sts.
Phone East 0702—Portland, Ore.

Portland Newspaper Union
47 Fourth St.
Portland, Oregon