

## AUTO TENDER TO MOBILE COFFEE STALLS LATEST

English Adopt New Idea and Use American Car for Its Execution.

From London comes the description of a most unusual and complete equipment which is replacing the time-honored "coffee stall," an institution that is rapidly passing out of existence.

The equipment in question consists of a caterer's trailer using the Reo speed wagon as its tractor-tender. The introduction of motorized transportation and its development have revolutionized the English "coffee stall," it now goes far afield; is taken to the races, sports gatherings, garden fetes and boat races and resembles in a general way the American lunch wagon.

Outdoor catering in England is a great gamble with the unreliability of the weather and the uncertainty of attendance of the buying public, so that speed in the "coffee stall" is decidedly useful in enabling the vehicle to be run back to its base of supplies and return, should the circumstances warrant. The automobile is being used advantageously as a power unit for the English "coffee stall" and enables the owner to quickly transport his lunch wagon wherever he desires and at the same time utilize the car to bring fresh supplies if required.

**A MOBILE OUTFIT**

By separating the power unit from the wagon, the trailer can then be constructed in such a way as to give more working room and to have a much lower floor and counter and more head room, each one of which is a distinct advantage. Mobile stalls of this character are being employed by Louis Connolly in London, and after six months' use have proved so successful that further orders for vehicles of this kind have been placed.

A single motor car can deal with a number of these lunch wagons, taking them individually to their locations or "pitches" and keeping them supplied with food during the time they are in operation. A typical trailer of this type has an over-all length of 15 feet and its body dimensions are 12 feet by 5 feet 6 inches.

Its counter is only 3 feet 6 inches from the ground and the head room for the counter hands is 6 feet 7 inches, so that there are no restrictions anywhere. In fact, three counter hands can easily attend to customers, and a very large number of meals can be served. The body is built of metal panels on an ash frame, with mullion lights all round the frieze. There are two large flaps which act as shelters to customers standing at the counter, and close the vehicle when it is out of use. A divided door at the rear end permits an extra small serving counter to be put into service and in the latest vehicle to be built there is also a serving window at the off side.

**BARBELED LEMONADE**

The interior is fitted with an oil stove at the forward end, screened off with aluminum sheet, and below the counter on the one side and below the shelves on the other are washing places and cupboards with sliding doors for food, stores, crockery, etc. Three large shelves, fitted with glass slide fronts, hold the sandwiches, cakes and other foodstuffs, dainties being displayed in narrow trays, each

of which has a place. Cups hang on hooks, and bottles of Oxo and mineral waters are also set out, while on the counter is a large glass "barrel" of lemonade. The interior is lighted with incandescent petrol gas mantles, or with electric lamps fed from the storage batteries. Provision is made for 20 gallons of water. The vehicle is enamelled white inside, and after various

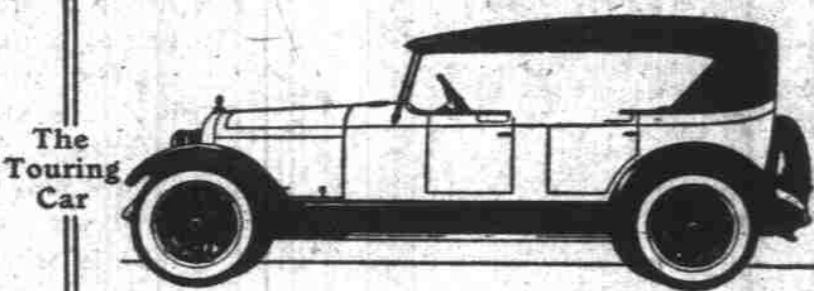
experiments white enamelled iron has been chosen for the counter top. The appearance of the vehicle is particularly smart, and one is assured that an unusually good class of customers is attracted by it.

On July 1, 1922, the motor vehicle registration was 10,620,471. This is an increase of 157,176 over 1921.

# Templan



To be Finest implies no one superiority but many superiorities skillfully and harmoniously combined.



The Touring Car  
**McCarley Motor Co.**  
 62 Cornell St., Portland, Or.  
 Distributors, Ore. and Wash.

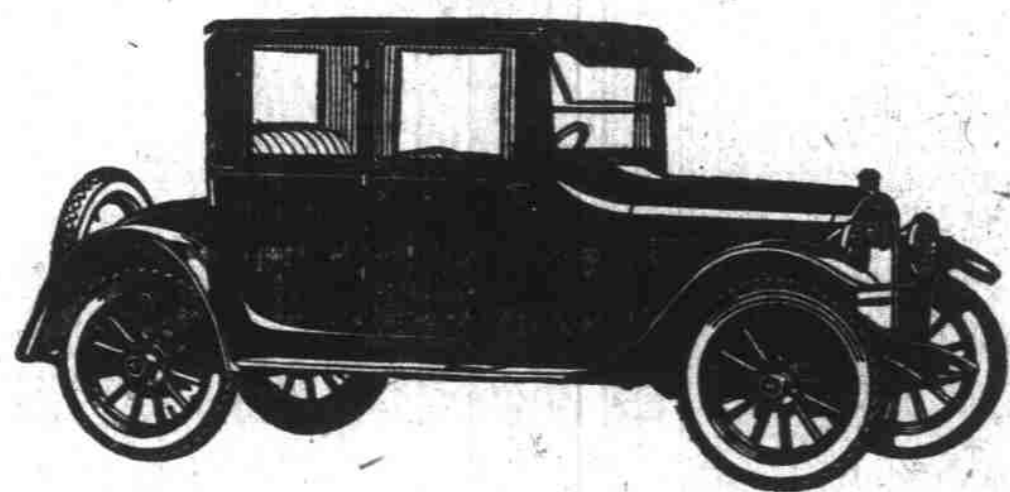
Battery Parts  
 Auto-motive Equipment



Regular Inspection Saves a Lot of Trouble

That I will give my autocar better attention and take it regularly to W. R. Miller & Son, Automotive Experts, for inspection and adjustment. I will insure greater efficiency and unequalled service by so doing.

**W. R. Miller & Son, Inc.**  
 N. W. Cor. 11th and Burnside Sts.  
 Broadway 2939 Formerly 389 Oak



## Comfort, Beauty, Brilliant Performance

Perhaps the most eloquent thing that can be said of both the sedan, and the coupe, is that the bodies are fully worthy of the Hupmobile chassis.

These enclosed Hupmobiles afford comfort and convenience to a degree that means positive luxury.

The satisfaction which the Hupmobile owner feels in the con-

sistent, and brilliant, performance of his car, is heightened and intensified by the pride which he justly takes in the closed Hupmobile's appointments and appearance.

We believe that the sound, solid worth of the Hupmobile was never expressed more generously than it is in these two models.

We urge you to telephone us for a demonstration—or come in.

**MANLEY AUTO CO.**

A. B. Manley, President. K. K. Burkhardt, Sales Manager.

11th and Oak at Burnside

Have you noticed this is steadily becoming a Hupmobile town?

# Hupmobile

## TRUCKERS MUST CARRY BIG LOADS

Once more in the history of the automotive industry it has become necessary for motor truck owners to plan maximum loads if they are to care for the transportation needs of the country during the next year, according to M. L. Pulcher, vice president and general manager of the Federal Motor

Truck company of Detroit.

It is freely admitted that there is at the present time a shortage of freight cars almost equal to war-time lack and during the next year this shortage of transportation facilities will not be relieved to any great extent. It is apparent therefore that the motor truck as before will have to come to the aid of the railroads to meet a greater demand for movement of goods from all classes.

"Today we have the railroads of the country exerting every influence," Mr. Pulcher says, "to insure that all freight cars are loaded to capacity and that 'empty mileage' is reduced to a minimum.

"In conjunction with this we have

many truck owners who operate fleets such as moving vans and cartage lines and trucks for hauling farm produce to city markets. In many cases these men are operating their trucks to full capacity in both directions. But there are some truck operators, perhaps many of them, who have forgotten the return load propaganda of war time.

"A careful analysis of the transportation field will show them that even today we have reached such a stage in the railroad freight situation that it is impossible for business men to ship when, where and as they like. The motor truck during 1922 can be of great aid in helping to solve this problem and there should be no trouble in securing capacity loads going and coming if a little effort is made.

**MR. AUTO OWNER**  
 There Is Only One  
**Raymond Auto Wheel Specialist**  
 and He Is Located at 133 NORTH 5TH

We rebuild and repair all wood auto wheels. Phone or call for prices. You'll find them very reasonable. Workmanship and service cannot be excelled. Oldest exclusive wheel shop in Portland.  
 PHONE BROADWAY 1296

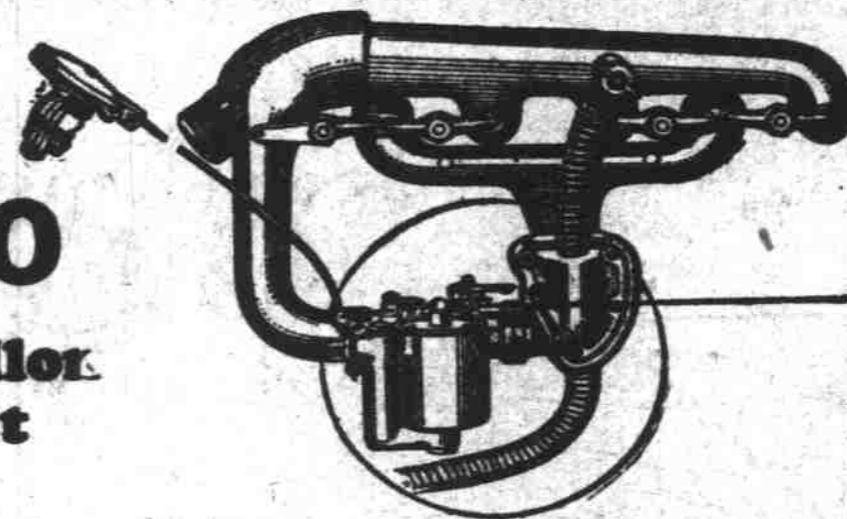
# Ford Owners Waste \$100,000,000 Worth of Gasoline Every Year!

Astounding Statement Made by  
**Prof. George Granger Brown**  
 of the University of Michigan

## Equip Your FORD WITH A NEW STROMBERG Carburetor and Hot Spot

51<sup>6</sup>/<sub>10</sub>

Miles on a Gallon. Official Test



\$15<sup>75</sup>

Carburetor and Hot Spot complete

Professor George Granger Brown, of the Department of Chemical Engineering, of the University of Michigan, in an article recently published in the Journal of Industrial and Engineering Chemistry, proves by tests made that due to poor carburetion the five million Ford cars in the United States waste approximately \$100,000,000.00 worth of gasoline per year.

This is an average of \$20.00 for every Ford car.

This useless waste can be stopped by equipping your Ford car with the new Stromberg carburetor and hot spot, which showed the remarkable efficiency of 51.6 miles on one gallon of 53 test gasoline in

an official test made under the supervision of the American Automobile Association.

This new carburetor equipment not only doubles your mileage, but starts your motor easily, increases your power, improves your acceleration and gives you a smoothness of operation never before experienced.

Equip your car today. Perfect satisfaction guaranteed.

Can you afford to drive your car another day and continue this constant loss in money, to say nothing of the conservation of our national resources?

See us today.

**Chanslor & Lyon Company**  
 8th and Flanders Sts., Portland

**Pacific Automotive Service**  
 51 N. Ninth St., Portland