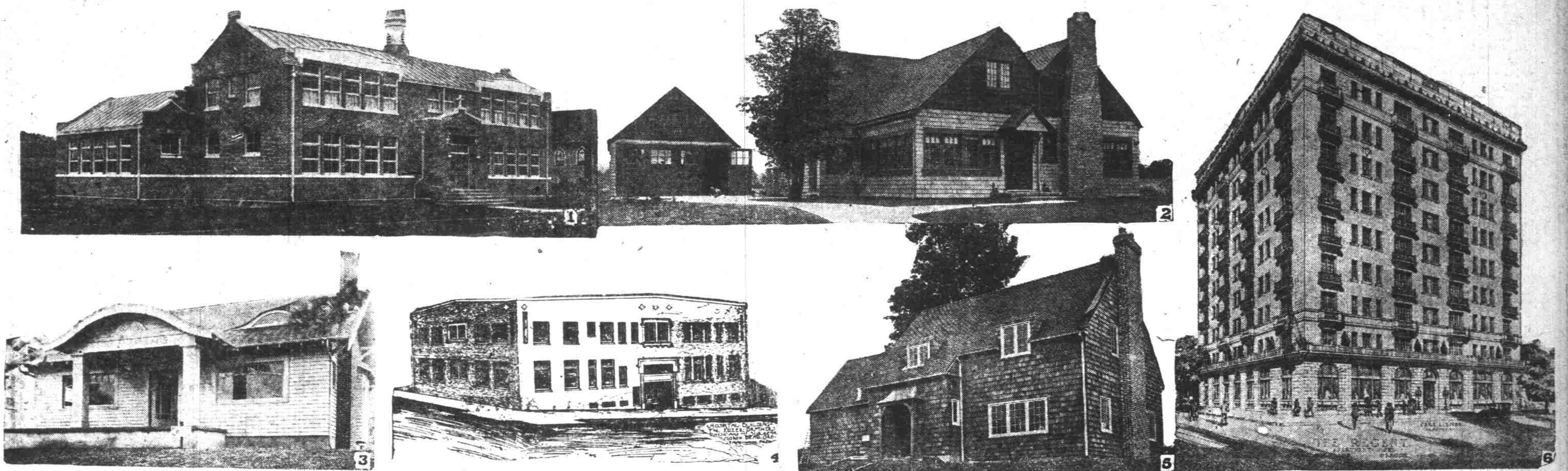


PORTLAND, OREGON, SUNDAY MORNING, SEPTEMBER 10, 1922.

## NEW APARTMENT HOTEL, PLANNED TO COST \$350,000, LEADS CONSTRUCTION PROGRAM OF WEEK

RESIDENCE construction continues to hold first place in the construction activities of the city, with an increasing tendency toward major improvements on business property. No. 1—New parish school building to be dedicated today at Maryland avenue and Blaudena street. The school opened for the first time last week with an enrollment of 115 pupils. No. 2—Residence just completed for Henry T. Zilka at the corner of East 31st street and Crystal Springs boulevard in Eastmoreland. No. 3—New home at No. 1200 East Pine street, purchased last week by Helen Louise Casey from L. L. Barrett for \$8200. The transaction was handled by Rummell & Rummell. No. 4—Hospital under construction at North Bend at an estimated cost of \$60,000. No. 5—Residence nearing completion at East 31st street and Crystal Springs boulevard in Eastmoreland for Elmer Young. No. 6—Apartment hotel planned for the Regent Investment company by Carl Linde, to occupy the quarter block at the southwest corner of 13th and Salmon streets. Construction cost is estimated at \$350,000.



### REALTY BOARD TO TOUR STATE FOR 1925 EXPOSITION

Members of Board United in  
Efforts to Make the Proposed  
World's Fair a Success.

If the 1925 world's exposition at Portland proves as successful an undertaking as its promoters hope and anticipate, much of the credit must be ported to the Portland Realty board, according to Harry G. Beckwith, president of that organization. The members of the board are practically all in their support of the state in the interest of the exposition, starting from Portland September 13. Preliminary to the organization of the trip, Mayor Baker and his cohorts visited a meeting of the Realty board at the Multnomah hotel Friday noon and entertained the realtors with a purported duplication of the entry into the city of Redmond. The principal speakers were Mayor Baker, William P. Merry, L. A. Jones and George L. Rauter, president of the Portland Real Estate association. A. R. Ritter, president of the Northwest Real Estate association, voiced the endorsement of that organization for the 1925 fair and announced that plans were being outlined for active participation in promotion of the event by the realtors of the five Pacific Northwest states and Canadian provinces.

### Power Project on Klamath River to Be Completed Soon

Klamath Falls, Sept. 9.—Excellent progress is being made in construction of a new unit for the California Oregon Power company dam on the Klamath river at Copco, near here, and it is expected the work will be completed by November 1, according to J. C. Boyle, division manager for the company. In addition to the new unit, 20 feet is being added to the top of the dam, increasing the height to 132 feet above the original river bed, and the power house is being extended. The new unit will give a total water wheel capacity of 25,000 kilowatts, against the present 12,000 kilowatt production. It is estimated the total construction cost will be \$500,000.

### Construction Work To Begin Soon on Shriners' Hospital

Construction work on the Portland Shriners' hospital for crippled children is scheduled to start this week, pending approval of plans by Bishop Frederick W. Keator of Tacoma, one of the trustees of the imperial council of the Shrine. Other trustees already have passed favorably on the plans as prepared by Sutton & Whitney.

### Wilshire Addition Placed on Market At Liberal Terms

J. L. Hartman company is putting on a special sale for Wilshire addition, lying between East 33d and 42d streets, about two blocks north of Fremont and adjoining Alameda Park and Olinwood Park. Most of the Wilshire lots are exceptionally large, many of them being 80x100 feet. Terms will be as low as \$3 down and \$2 per week, with no assessments to assume. The addition is near both the Beaumont and the new Alameda Park schools, and is within easy walking distance to the new proposed high school and park.

### TIMBER OWNERS PROTEST TAXES

Grays Harbor County Men Say  
Assessment Valuations Are  
Unreasonably High.

Montesano, Wash., Sept. 9.—Timber owners of Grays Harbor county attended Monday's session of the county board of equalization and voiced a general protest over increased timber valuations. Speakers estimated the increase over last year's valuation at from 7 to 20 per cent. G. W. Marshall, representing the Weyerhaeuser Timber company, stated the valuation of this company's holdings were decreased \$300,000 when the board of equalization made a horizontal 10 per cent cut last year, but that this year was more than lost by this year's increase. He declared no other county in the state has as high timber valuations as Grays Harbor county.

### Concrete Building To House Service Departments Plan

Proposed erection of a concrete building on the half block on the north side of Pacific street between East First and Second streets to house the motor truck sales and service departments of the Roberts Motor Car company was announced last week by D. W. Roberts, president, and H. W. Roberts, secretary of the company. Plans for the building are being prepared by Houghtaling & Dougan and the work is stated that construction work would be completed early in January. Two compartments, each 60 by 100 feet in area and free from posts, will be provided for the shop and display departments.

### Power Sites Along Deschutes River to Remain With State

Salem, Sept. 9.—With a view to conserving the power possibilities of the Deschutes river to the people of Oregon, George L. Cleaver of Portland, secretary of the Hydro-Electric league of Oregon, has filed with State Engineer Copper preliminary applications covering the use of power sites at Metolius, Pelton, Mecca, Coleman and Whitehorse Rapids. The five sites, Cleaver points out, are capable of developing an aggregate of 195,700 horsepower and together with other available power sites along the Deschutes river, contain possibilities surpassing even the Niagara power project in dependability and economy. Cleaver's filing points out that even now there is pending before the federal power commission an application from a private corporation covering the right to these power sites, which he would develop in the interest of the consumers, providing electricity practically at cost either through a state owned power plant or a power company organized under the auspices of the Hydro-Electric league.

### NEW APARTMENT HOUSE PLANNED; COST \$350,000

The Regent Investment Company Proposes to Erect Apartment Hotel at 13th-Salmon.

Plans were completed last week by Carl Linde for a nine-story apartment block to occupy the quarter block at the southwest corner of 13th and Salmon streets. The new apartment would be named the Regent. It was stated, and the enterprise is being promoted by Charles MacReynolds and his associates in the Regent Investment company. According to the plans the building would be of reinforced concrete construction, with facing of Bufford Indiana limestone. The ground floor arrangement calls for a large lobby and four retail shops facing on 13th street. Construction cost of the building is estimated at \$350,000.

### New Parish School Opened to Public; Dedication Today

The new Blessed Sacrament parish school building recently completed at Maryland avenue and Blaudena street will be dedicated at 3 P. M. today with Archbishop Christie officiating. The public has been invited to attend the dedication ceremony and the building will be open for visitors throughout the afternoon. The school opened for the first time last week with an enrollment of 115 pupils and is in charge of five Sisters of St. Francis from Dubuque, Iowa.

### Work Launched on Keizer Hospital at Site in North Bend

North Bend, Sept. 9.—Construction has been started on Keizer Bros. hospital, a two-story structure to cost \$60,000. It is being built by Drs. Russell Keizer and Phil J. Keizer, physicians and surgeons of North Bend. The first floor will be occupied by the physicians' offices and six private rooms. The second floor will be the surgery, sterilization room, diet room, kitchen, wards for men and women patients, five private rooms and consultation offices for visiting surgeons. The basement will be arranged for a garage, receiving room for patients, nurses' rooms and the heating plant. An automatic elevator will serve all floors.

### New Westover Home Is to Cost \$10,000

Plans have been completed by F. M. Stokes for the erection of a residence for William D. Stubbs on a site at No. 294 Cullerpepper drive, Westover Terrace. The house is to be of frame construction, 35 by 46 feet in ground dimensions, and is estimated to cost \$10,000.

### Work on Church Ridgefield, Wash., Sept. 9.—A large force of workmen spent Labor day at work on the new Nazarene church, being constructed on Pioneer avenue, under the supervision of the Rev. D. P. Henry, local pastor. At noon the women of the church served a dinner to the carpenters.

### Simpson Logging Co. Wins Tax Litigation

Montesano, Wash., Sept. 9.—The suit of the Simpson Logging company against Grays Harbor county for re-evaluation of 1921 taxes terminated yesterday with a judgment allowing the plaintiff the full amount of reduction asked in the complaint, approximately \$2000. The county moved for dismissal of the suit for lack of evidence of an over-assessment and when this motion was denied rested without introducing evidence. The new figures arrived at are those determined by the old Noble cruise of 1912. This cruise has been a source of contention between the Simpson Logging company and various assessors ever since. Four different times the company has brought suit to compel the county to use the Noble cruise rather than a later one. At the time the Noble cruise was made an agreement was reached that it should be the basis for future assessments.

### Association Plans Building Program

Milwaukie, Sept. 9.—If the plans being considered by the Milwaukie Real Estate & Development association for the 1925 fair will be started within 20 days on several new homes in Milwaukie. The viewing committee is inspecting several prospective building sites in the city and a decision will be reached soon. This announcement was made at the Wednesday night meeting of the association in the high school building. Attention of the organization was called to the many acts of petty thievery and robberies that are taking place from homes in the district, and the association will consider plans to help overcome the evil. M. A. Lehman, president, presided.

### MEN from 60 to 80, do you want to live longer, more usefully, with better health, greater comfort, and render a public service at the same time?

If so, organize in your neighborhood a branch of the M. A. M. and T. P. C. That means the "Middle Aged Movers and Tree Planters' Club". The motto of the club is "Usefulness and health—no nonsense." The necessary regalia for complete membership is one brush hook, one scythe, one pickaxe, one good shovel. Any costume would do, the plainer the better—overalls, and straw hat preferred. There are no dues, the club is 100 per cent public service. You need not travel miles and wait your turn at a golf club. Take your own brush hook, go along the public road nearby, or if you live in town, motor out to the nearest agricultural region. Park your car along the roadside, cut down and off of private property, cut down weeds and useless, worthless shrubs.

### and not as heavy. After you have planted the trees, take care of them. And now, the answer to the American question: "Where do I come in?"

You come in as follows: The best exception is moving your life into the mower, moving slowly, does not tire the heart. Swing back and forth. Bent over, he exercises the muscles across the front of the body. The drinking of the water, and will make old age slow, ridiculous, ugly. By mowing you get thirsty. Drink water, with fruit juice, lemon or something else mixed, drink plenty of it. Avoid drinking too much pure water. If you have no fruit juice mix a little oatmeal with the water. The perspiring will clean your system, make you a better man, improve your thinking, lengthen your life.

### Marshfield Plans To Build City Hall

Marshfield, Or., Sept. 9.—Steps toward building the city to build a new city hall are being considered by the members of the city council. Monday night the council will meet with the new budget committee to discuss the matter and come to some decision as to the amount which should be spent for a city building. The old city hall was destroyed by the fire which swept the north end of the city. Temporary city offices are now maintained at the armory, while the fire apparatus is being kept at one of the garages. A temporary city jail was built recently.

### New Hotel Will Be Erected at Kelso

Kelso, Wash., Sept. 9.—H. E. McKenney, prominent business and professional man of this city, will immediately erect a modern two-story hotel building, 60x100, at the corner of Second and Church streets, on a lot purchased last week from Mrs. Wena Hanselkie of Portland. The building will be of frame and stucco construction and will have 20 large rooms, all of which will have bathrooms. One feature of the building will be a beautiful lobby with a large fireplace. The furnishings will be elaborate and the hotel will be one of the finest in the Northwest. C. F. Smith has the contract for the new building.

There is an indescribable lure to the sea, and to the men that go down to the sea in ships. Strange things are chronicled on sea voyages; some of them true but unbelievable and some believable but untrue. It is like the old aunt who told her sailor nephew that she simply wouldn't be fooled by his tales of flying fish, for whoever heard of such things, except mermaids, and everyone knew about those hussies.

Now when a burly old seadog admiral was about to come aboard a ship the business of climbing over the high gunwales was somewhat of a task. To do away with the discomfort as much as possible it was customary to rig a boatswain's chair and hoist the old boy over on the run. Being heavy, it often took as many as eight men to get "His Nibs" over the side. The men were guided in their task by the boatswain, who stood at the side, and by means of a pipe gave his signals for pulling or lowering away. This was called piping the side.

### Alterations Start On Broadway Block

The Stone Estate building at Broadway and Flinders street, formerly occupied by Fred Dundee, is to be remodelled under direction of the Metzger-Parker company. Plans for the alterations have been prepared by Charles W. Erts and cost is estimated at \$6000.