

A WELCOME TO THE VISITING EPISCOPALIANS—AN INVITATION TO SHARE EVERY SPLENDID ADVANTAGE THIS STORE OFFERS.

Men's Heather Hose at Phenomenal Price—63c Pr.
—These in the popular "Richelieu rib"—hose that men find uncommonly comfortable for fall and winter wear. Best to stock up at this low price—at 63c. On the First Floor—Lipman, Wolfe & Co.

Lipman Wolfe & Co.
"Merchandise of Merit Only"

Playing Cards in Genuine Leather Cases—Special at 95c
—Greatly underpriced are these playing cards—and more remarkable the price, since the case is real leather. Handy for the traveler—special at 95c. On the First Floor—Lipman, Wolfe & Co.

Tomorrow (Friday) These Birthday Bargains
—and All the Others Earlier Advertised, If Quantities Permit. See the Windows, Too!



BIRTHDAY SALE

Hand-Embroidered Madeira Linens at Regular Wholesale Prices
Specially Purchased Groups of Beautiful Doilies and Centerpieces—Birthday Sale Features

—These the famous imported Madeira linens—and every doily and every centerpiece hand-embroidered and hand-scalloped—a variety of designs. Extremely remarkable these values.
Hand-Emb'd Oval Doilies—6x12-Inch Size—Special at 50c
Hand-Emb'd Round Centerpieces—18-Inch Size—at \$2.50
Hand-Emb'd Round Centerpieces—24-Inch Size—at \$4.95

See These Linens in Our Windows—The Sale on the Second Floor—Lipman, Wolfe & Co.



EXTRAORDINARY!
"Italian Jet" Bead Necklaces \$2.95

—Beautiful beads of sparkling "Italian jet"—with white rondels that give charming contrast. The strands in 32-inch length—the beads in oval and round styles and cut to give the maximum of brilliancy. Very special at \$2.95—you will say so when you see them—see the picture—see our windows.

Special! Sample Line of Bar Pins 59c

—White metal bar pins set with white stones—a great variety of styles. These pins specially purchased and now marked unusually low—at 59c.

On the First Floor—Lipman, Wolfe & Co.

A Birthday Phenomenon!
The Celebrated "Esmond" Blanket Comfortables
72x84 Inch Size—and Selling Tomorrow Much Below Regular—
at \$3.89

—Ideal for use as comforters or blankets are these famous "Esmond" blanket comfortables—and when such warm bed coverings are to be purchased for as little as \$3.89 it's safe to say the supply will not last long. A good selection of the wanted colors and many pleasing patterns.
On the Second Floor—Lipman, Wolfe & Co.

Extra Special! Extra Special!
New Hemstitched Linen Huck Towels for \$1.15

—Every towel pure linen—every towel hemstitched—no need to emphasize the fact that they're very specially priced at the \$1.15 price. Made of fine quality huck—in the 18x33-inch size. Four pleasing designs from which to choose. Friday Birthday features. See the windows.
On the Second Floor—Lipman, Wolfe & Co.

New Fall Corsets Greatly Undervalue Tomorrow
Specially Purchased Group of "Lipman, Wolfe Special" Corsets—One Price
\$4.85



—Birthday Sale of brand-new corsets—and these are well-known "Lipman, Wolfe Special" corsets, so famous for better qualities and expert workmanship. They're made of silk brocade with silk elastic at the waist line and daintily trimmed with lace and rosebuds.
—Two models in the selling—one pictured at the left. All sizes in each style. See the windows.
On the Fourth Floor.

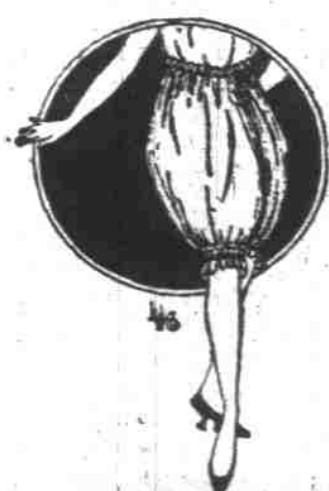
Here's Sensational Pricing!
Crepe de Chine Nightgowns Super-Values at \$4.95

—Here is luxury made a bargain. Some of the gowns daintily lace-trimmed and with strap shoulders—others in tailored styles with pointed shoulders or yoke effects. A choice selection of garments in the soft shades of orchid, peach and flesh tint.

New Silk Envelope Chemises Very Special at \$2.95

—So dainty, so unmistakably better grade are these chemises the \$2.95 price immediately is recognized as "extra special." They're crepe de chine chemises in tailored models, with deep hemstitched bands or wide lace insertions. There's choice of orchid, peach and flesh tint. See the windows.
On the Fourth Floor—Lipman, Wolfe & Co.

Women's Bloomers Special at \$1.39



—Selling such bloomers as these at a price as low as \$1.39 is another of the surprising features of the Birthday Sale. They're of saten, lingette, aéro seço silk and fine jaquard—in single and double-garter styles.
—Full cut bloomers with strong reinforcements. Choice of a good assortment of colors; also black and white. See them in our windows.
On the Fourth Floor.



See Our Window Displays

1200 Men's New, Better Class Shirts at About Regular Wholesale Cost
Every Shirt Perfect—Every Pattern "Woven Through"
—Every Color Guaranteed Not to Fade—Most Remarkable Shirt Values Here in Several Years

—Group one at \$1.49
—Shirts of the famous David & John Anderson woven end-to-end madras, English oxford, genuine Lorraine cords and woven self-striped cords—all wonderfully tailored—all perfect

SPECIAL \$1.49

—all bought for the Birthday Sale.

—Group two at \$1.89—We'd have to pay at least \$1.89 wholesale if we were to buy more of these shirts today—just 600 shirts in the lot—every shirt with woven-in satin stripe—and all in beautiful patterns and guaranteed colors.

SPECIAL \$1.89

Men's Section—On the First Floor—Lipman, Wolfe & Co.

Never Have Portland Folks Had an Opportunity Such as That Now Presented in the Birthday Sale of Craftsman-Made "Narcissus" Mirrors for Less Than Half Price

—A specially purchased group of mirrors—practically every wanted style represented and prices that are much below HALF regular markings. A huge collection—unsurpassed quality—savings that are of tremendous importance.

We Stress Four of the Special Prices:

\$7.50, \$13.50, \$17.50, \$22.50

On the Seventh Floor—Lipman, Wolfe & Co.



A Birthday Sale of Just Fifty Men's and Young Men's All-Wool Overcoats at a Price That's Phenomenal

\$25

—Not \$25 coats, by any means—he must have a fine memory who can recollect ever seeing such coats at \$25—Think of this, men! They're all-wool coats of plaid-backed fabrics—they're decidedly better class coats—they're in the new "Kenway" draped raglan model—and every coat with full belt and convertible collar. See them in our windows today.

—Just 50 of the coats—we wish we had 500—we so well know that many more than 50 men will want to share in this remarkable event—the saving is sensational—the values are wonderful.

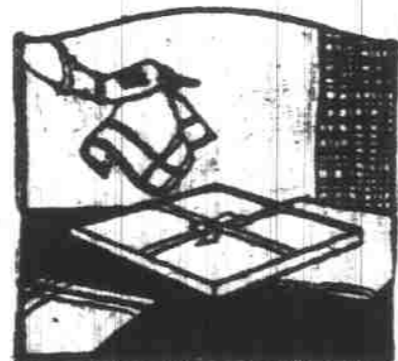
—All sizes for men of all builds—all at \$25.

Men's Clothing Section—On the Fifth Floor—Lipman, Wolfe Co.

Incomparable! Sale of Linen Hand-Spoked Kerchiefs

Tomorrow They Go at Usual Wholesale Cost—One Price

39c



—If we were to buy these same handkerchiefs at wholesale today we would have to pay fully 39c each for them—that's how specially priced they are in the Birthday Sale.
—Every one with two rows of hand-spoking—all in plain white—and all full-sized.
On the First Floor

New Antelope Leather Handbags Underpriced at \$5.95

—And black Morocco leather bags extra special at \$5.95—bags in the new pouch shape so popular for the Fall, and with beautiful carved filigree frames in the green-gold finish, mountings that alone are worth the price asked for the complete bags—\$5.95.

—All attractively trimmed and all with change purse and vanity mirrors. Very unusual values at this extraordinary price. See window display.
On the First Floor—Lipman, Wolfe & Co.



Silk Specials! Crepe de Chine Special at \$1.95

—We cannot buy this silk at wholesale today for this price—that's how special \$1.95 a yard is for material of this quality. All wanted shades. 40-inch width.

Canton Crepe Special at \$2.85

—Underpricing of such silks as these comes but once in a long time. Good selection of the new colors—40-inch width.

Satin Canton Special at \$3.75

—Beautiful fabric of perfect quality—39 to 40 inch width—the new fall shades.
On the Second Floor

Scrim and Voile Curtains Special at \$1.29 Pair—200 Pairs Bought for the Birthday Sale

—Economy for the home builders! Well-made, perfect quality curtains at a price made possible only by a very special purchase. Choice of ecru and white in the 2 1/4-yard length at this unusually low sale price—\$1.29 a pair.

Marquisette Curtains Very Special at \$2.69

—Truly beautiful curtains—and wholly remarkable the price. They're well tailored—some with lace edges and insertions—others with hemstitched edges.
On the Fifth Floor—Lipman, Wolfe & Co.

