

NEW LINE PROVES TO BE CENTER OF GREAT INTEREST

Advent of Earl Car Announced by A. C. Stevens; Cars Make Appearance.

Sponsored by A. C. Stevens, distributor of the Haynes and Winston lines, the new Earl car made its debut on Portland's automobile row last week. The first carload of touring cars was unloaded Tuesday afternoon. Early Wednesday morning the cars and a new sports roadster, a thing of beauty indeed, were to be seen on the floor of the showroom at 15th and Washington streets.

The most striking thing about the Earl car, when seen for the first time, is the snap and dash of its lines. The car is one that would attract attention in any amount of traffic. This, Stevens pointed out, was due to the cars with which the car is finished. Detail is well carried out in this new car.

Four models were placed on display in the Stevens showroom. They were the touring car, the sports roadster, the four passenger brougham and the five passenger sedan.

No sooner did the word get around that the cars were here than they became the center of attraction. Passers by halted to have a look at the sports roadster in the window and then came inside to see the rest of the cars. This attests to the attractiveness of the design.

CAR WELL BUILT
That appearance was not the sole factor tending to make the Earl car popular was shown by Stevens. He told of the all-welded steel body, the heavy seven inch frame, a frame heavier than on any other car of similar weight, the channel iron braces for the fenders and the special heavy lacing that makes all road noises a thing of the past.

The motor is one of the many features of the new cars. A four cylinder motor of 37.5 horsepower with a total displacement of 195 cubic inches drives the car. The power is transmitted to the rear end through a three-bearing specially balanced crank shaft to the Borg & Beck clutch. The transmission is the standard selective gear shift mounted in unit with the motor.

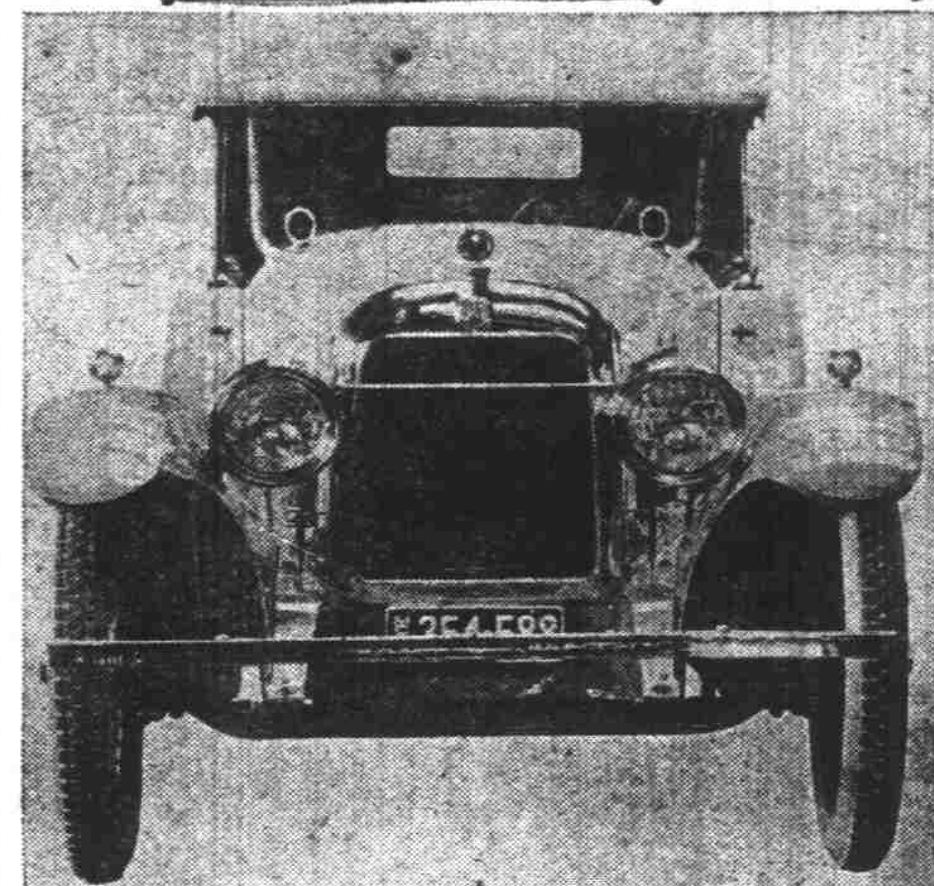
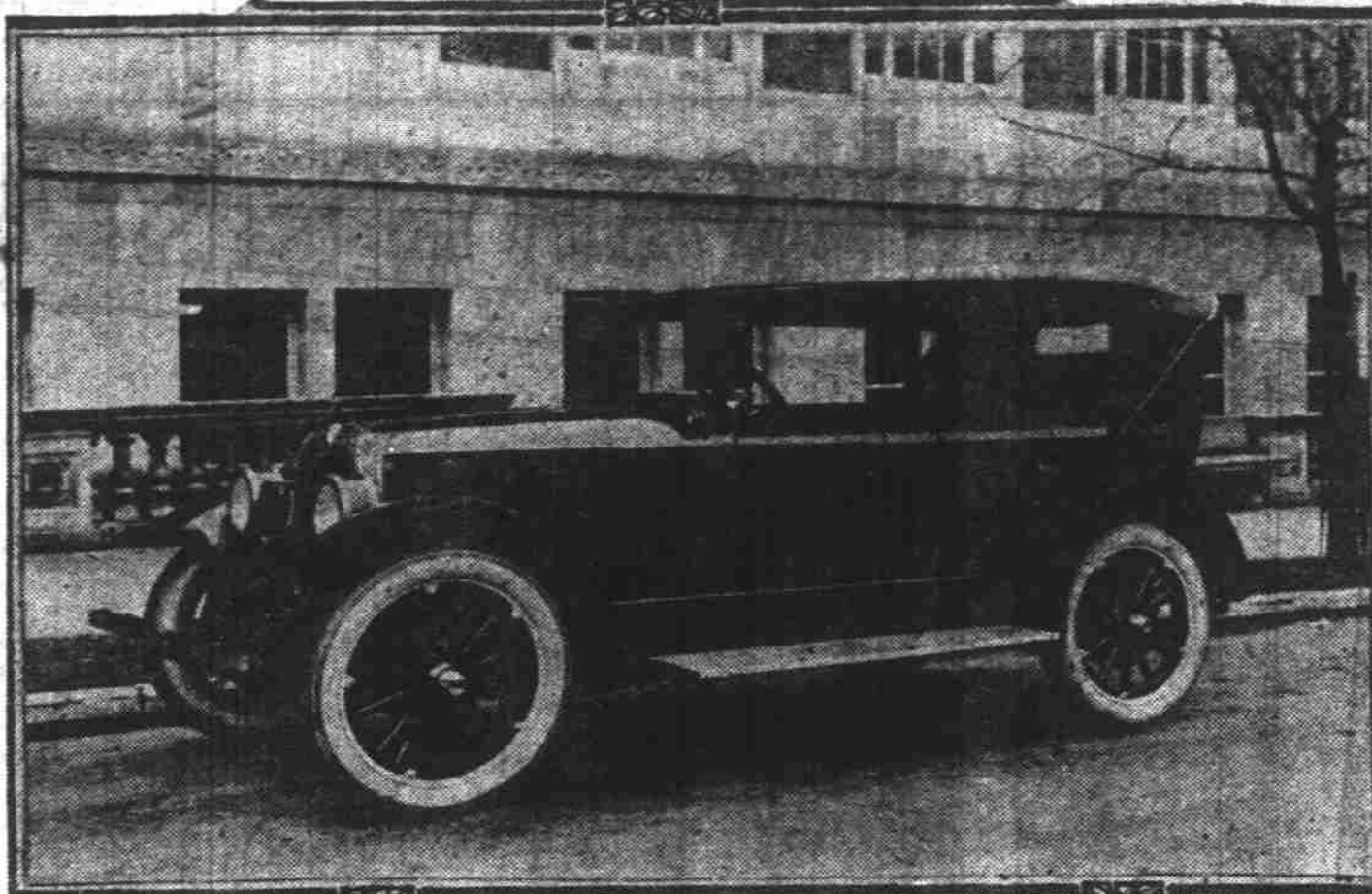
One of the features of the control of the car is the location of the master switch. This is placed to the left of the steering wheel and at the point of junction with the instrument board. In its location it is convenient for the driver as it does not necessitate removing the right hand from the steering wheel to dim or brighten the lights.

DETAILS CARRIED OUT
The completeness with which the car is finished is one of the remarkable features. Many refinements are incorporated in the general design that can only be appreciated by actually seeing the car. The body strips are of solid mahogany while the seats, instead of being merely painted have been painted and covered with carpet. The sides of the tonneau and control seat pits are covered with linoleum.

Practically all fixtures are nickel plated and add greatly to the attractive appearance of the cars.
The car equipped for the road weighs, in the touring model, 2550 pounds. It has a wheelbase of 112 inches.

The equipment included on these cars is drum shaped head lights with dimmers and non-glare lenses, instrument light on board and under the hood, speedometer, motor, windshield wiper, robe rail, front bumper and cord non-skid tires.

NEW LINE IS MOST ATTRACTIVE



The Earl car, Portland's newest, was shown for the first time last week by A. C. Stevens, 15th and Washington streets. Above—The touring car. Below—As it appears coming toward you. Snappy—eh, what?

The prices quoted by Stevens on the cars for Portland delivery are: Touring car, \$1295; roadster, \$1600; brougham and sedan, \$1385. Another feature of the car is the windshield. This is made in one piece shield that is absolutely weather-proof.

GRADING BIDS TO BE MADE
La Grande, Aug. 12—Bids will be opened by the county court September 7 for the grading of the La Grande-Cove road. The grading will be completed this fall and the rocking and surfacing will be done next spring.

ARTICLES ARE FILED
Montesano, Wash., Aug. 12.—The Olympic Motor company of Hoquiam has filed articles of incorporation. The capital stock is \$5000.

THE SAGE SEX
S'all right to motor in the moonshine but tain't good to put moonshine in the motor.

The New Oakland Six

Oakland Motor Car Company, Pontiac, Michigan
Division of General Motors Corporation

Northwest Oakland Co.
344-348 Burnside Street (Just West of Broadway)
Phone Broadway 0082
For over six years distributors in Portland and Seattle

COURTESIES ARE NEEDED TO MAKE MOTORING SAFE

A. G. Moutier Outlines Code of Etiquette for All Motorists—Advises Good Fellowship.

As the boulevards become more and more crowded with the ever increasing number of vehicles there are a few courtesies which, if followed, will make motoring more enjoyable and a great deal safer, is the contention of A. G. Moutier, local manager of the Western Auto Supply company.

"Far too few motorists blow their horns when passing other vehicles," he said. "But there are not a few drivers, mostly possessors of small machines, who take pleasure in making an awful racket when they are about to pass another machine. They seem to enjoy seeing the car ahead of them swerve quickly to one side of the road, believing, from the large noise made, that a fast machine or a truck is almost upon them and demanding the greater part of the road to pass. There are many and varied makes of horns used, but for pleasure cars, a horn which seems to ask for the right of way rather than demand it would seem proper."

DON'T TRY TO CROWD
"While we are on the subject of passing machines, it is hardly polite to step on the throttle and squeeze between two cars both going in opposite directions. Not only does it wrack the nerves of the passengers in your car but it causes the occupants of the other machines needless worry because a fraction of an inch might mean a terrible accident."

"The car entering a main thoroughfare, should always slow down, regardless of right of way. This is not only an act of courtesy in saving the many machines traveling along the main boulevard the sudden breaking of their machines and burning up rubber, but it is also an act of thoughtlessness which slows down the whole line of cars for the sake of a few seconds gained on the part of the individual."

AVOID GLARING LIGHTS
"One of the worst enemies of night driving is the terrible, glaring headlights. The majority of machines have headlight lens which comply with the law but it is the occasional machine you meet with blinding headlights which takes all the joy out of a pleasant night's drive. It isn't playing fair to the hundred of motorists who obey the law. Get out in front of your car a hundred or so feet and see if your headlights are the blinding kind."

"In parking in crowded downtown districts, it is a decidedly unfair thing to crowd into a parking space someone else has been waiting for. Don't try to jam your machine into a space so small that you are very liable to dent the fenders of the machines on either side of you. If you do get in a tight place, take a look to see if the machine on either side of yours will be able to get out without scratching your car or pushing it forward. There are a few motorists so contemptible that they will even go so far as to push another machine into the space reserved for a fire plug to make room for their own car. This kind of motoring cad should have his license revoked."

"Pedestrians seem unable to make up their minds at times, just like chickens, whether or not to cross the road and usually end up where they first commenced their hesitating maneuver. Have pity and don't give them heart failure. You know yourself that a big car headed straight for you sometimes adds your brains for the moment. Take this into consideration and slow down and motion to them."

"After all, the courtesy of the road simmers down to the old, old saying: 'Do unto others as you would have them do unto you.'"

COOPERATION IN NORTHWEST SEEN

Fred Vogler Predicts Cities Will Forget Jealousies and Work Together.

After spending several days in Seattle and Western Washington, Fred W. Vogler, president of the Northwest Auto company, local Dort and Reo distributor, recently returned convinced that a new era of inter-community cooperation is coming into being between the cities of the Northwest.

"I have seen the time when Portland business men going to Seattle would get a mighty cold reception," he said. "On the other hand we, too, were guilty of the same offense. We looked upon them as ones who were invading trade territory in which they should have no right to expect business."

"It is indeed assuring to find that this condition is rapidly passing out of existence. The old-time jealousy no longer exists. There is friendly rivalry, of course, but in the larger sense all the Northwestern cities seem to realize that sectional unity is the biggest factor in establishing industrial and commercial leadership, and developing this section into one of increasing importance in the affairs of the nation and of world trade."

AID 1925 FAIR
"Above all the other things which indicate a thorough comprehension of the benefits which come from unity in spirit, in purpose and in action is the enthusiasm with which Western Washington, including especially Seattle and Tacoma, are getting behind Oregon's 1925 exposition. They are earnest and sincere in the belief that it will prove to be the biggest single thing that could be done in focusing the attention of the world to the Pacific Northwest."

"If I judge them correctly we can expect tremendous assistance from them. There is no doubt concerning their willingness to spend large sums upon exhibits at our fair and thereby assist in exploiting the resources of the Northwest. They are for the fair."

Magazine Features The Oregon Roads

Oregon roads and particularly the Columbia river highway, are featured in a recent issue of the "Road-Runner," a publication of the Standard Oil company advocating the use of asphalt for highway construction. A picture of the Columbia river highway at Crown Point is used for the front page illustration while various other features of this famous highway are included in the many pictures to be found in the issue. The entire paper is devoted to Oregon roads.

Attractive Prices Quoted on Haynes

Without any change in the quality of the car A. C. Stevens, announced last week a list of attractive prices on the Haynes line, of which Stevens is distributor. The prices, which are for Portland delivery are: Five passenger touring car, \$1775; roadster, \$1825; three passenger coupelet, \$2385, and the five passenger sedan, \$2735. "There has been no change in the specifications or quality of the Haynes car," Stevens said. "The line, one of America's oldest still holds to its old traditions of service."

Little Heap Plays Dual Role; Movies And Tires Compete

Not many youngsters are privileged to play important roles in both the worlds of industry and of entertainment. Such a distinction, however, is vouchsafed to a full blooded Indian boy, known as Little Heap to an army of people throughout the West because of his affiliation with Savage Tire publicity as a trade character.

Little Heap is seven years old and is the son of M. J. Thunderface, a veteran among Indian motion picture actors. Thunderface has played important roles in numerous prominent productions and has supported many distinguished stars. Little Heap is much in demand at the studios to play juvenile parts that require the combination of typical Indian features with an appealing boyish personality. His real name is Joseph Thunderface, but since his adoption by the Spreckels "Savage" Tire company he has taken the name of Little Heap Thunderface, and by such is known at all of the motion picture studios where he works.

The personnel of the Savage organization swear by Little Heap as their good luck mascot for his adoption was coincident with the introduction of the new popular Savage cord.

"SQUIBBELS" HAVE PICNIC
Chehalis, Wash., Aug. 12.—The Aberdeen Motorcycle club of 26 members will come to Chehalis today and join the Chehalis Motorcycle club in a picnic at Clagato grove.

LOOK OUT FOR COPS
When you see a nice straight stretch of road ahead, remember the speed law of the Northwest. They are for the fair. The cop is probably waiting for you.

This Will Help You Decide!

NEW CHANDLER SIX

PRICES

TOURING CAR

\$1495

7 Passenger Touring . \$1645	4 Passenger Roadster \$1495
Dispatch 1645	Metropolitan Sedan . . 2295
Royal Dispatch 1745	4 Passenger Coupe . . 1995
2 Passenger Roadster 1495	7 Passenger Sedan . . 2375

F. O. B. CLEVELAND

CHOOSING a new car becomes easy when all the dominating merits of one of the year's greatest automobiles can be bought at such prices.

New Prices Effective August Second, 1922

OREGON MOTORS, Inc.

DISTRIBUTORS
521 Washington at Burnside Bdwy. 1752

THE CHANDLER MOTOR CAR COMPANY • CLEVELAND