

LONG SEES BRIGHT FUTURE FOR MILLS CUTTING LUMBER

R. A. Long chairman of the board of directors of the Long-Bell Lumber company upon returning to headquarters in Kansas City from a trip to the company's new operations at Kelso, Wash., expressed very optimistic views regarding the lumber situation, pointing out that in the past two years the mills of the country have not been able to produce enough lumber to equal the demand.

He was unable to recall a period, he said, when the outlook for the lumber industry was more promising than that now prevailing. As a result of the war restriction on building practically all of the cities in the country were under-housed during the war period and are under-housed now.

"Since it would require 12 years of work at 25 per cent above normal to make up for the shortage of houses," he said, "it is clearly evident that the demand for lumber certainly should increase rather than diminish. In addition there is the demand for railroad and other industrial lumber, which, while good, is certain to show a very heavy increase in the near future. At the same time, general conditions are much better than they have been for some time."

In his announcement of the plans for the development of the Kelso and Cowitz river district projects, Mr. Long said that the two mills to be built on the Columbia river, construction of which is to begin presently, and the third mill to be built a little later, will have direct facilities for shipping to all the markets of the world by the excellent ocean route of the Columbia river and three trunk line railroads, the Great Northern, the Northern Pacific and the Union Pacific.

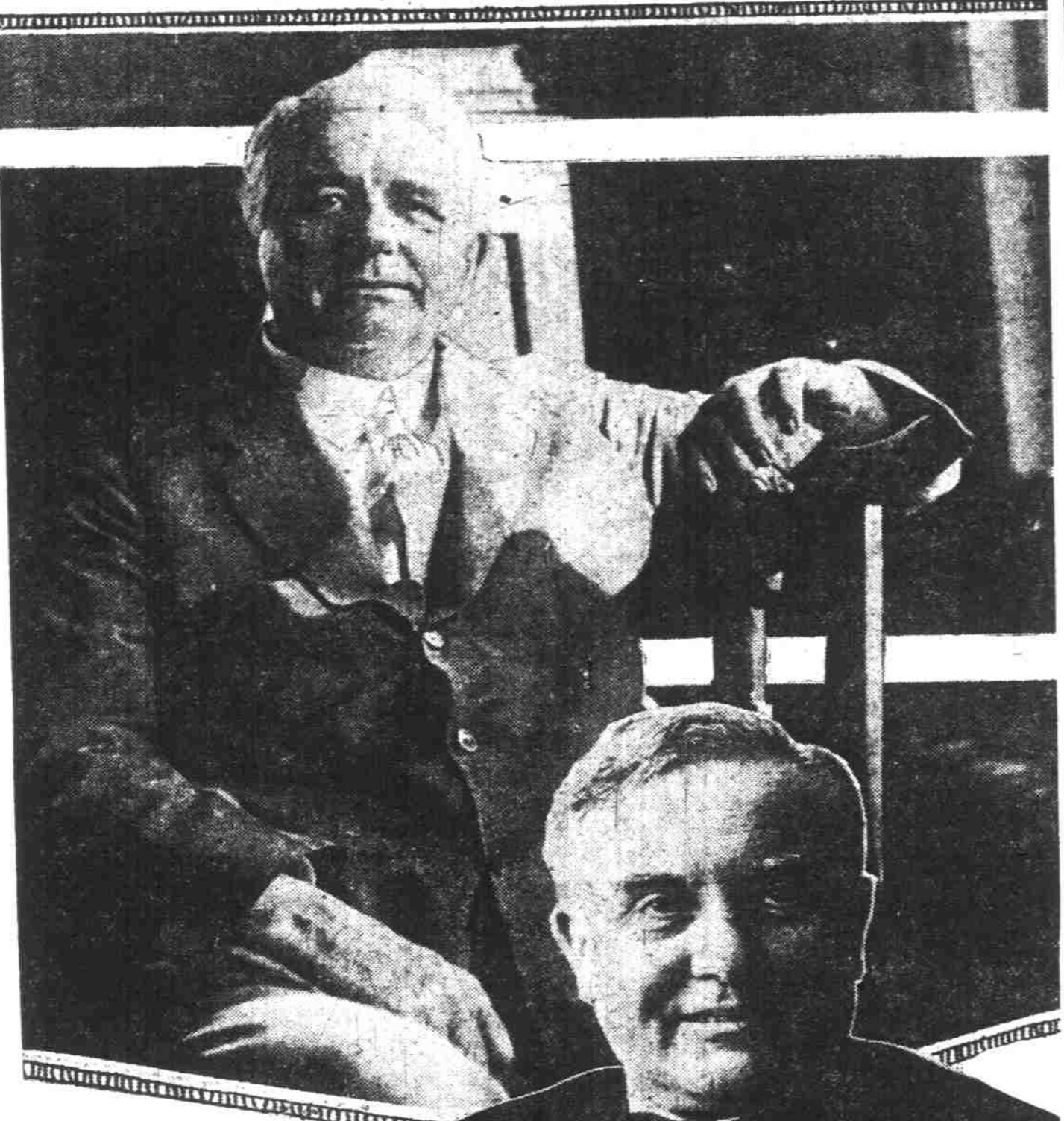
While the main operations of the company will be transferred from the south to the Columbia river district, the head office and general sales offices will remain in the R. A. Long building, Kansas City.

Every piece of lumber shipped from the Kelso mills will be branded with the company's trademark as the company has branded for the past three years its lumber produced in the South.

Transfer of the major operations to the Pacific Northwest, Mr. Long explained, does not mean that the company will not be a producing factor in the South. In this connection, he said: "We will not be through cutting in the southern pine district for years, and will be shipping in large quantities long before our timber is exhausted in the South."

SURVEYING LONG-BELL RAILWAY
Kelso, Wash., Aug. 1.—A large surveying party left headquarters of the Long-Bell Lumber company here this morning for Vander. They will locate a camp west of Vander in the company's timber holdings and will make a tentative survey for their logging railway route in that portion of the company's timber.

Unmerger Makes Natron Line Sure

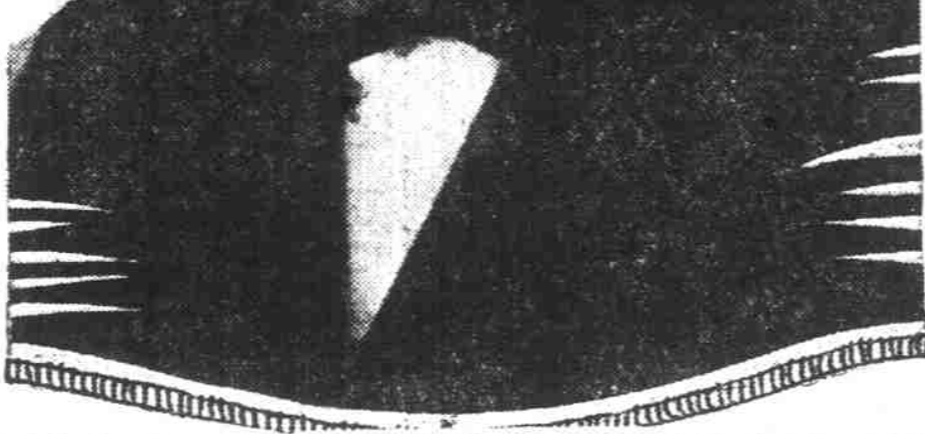


NATRON RAIL LINE ASSURED, GRAY SAYS

(Continued From Page One)

Puget Sound, Portland, San Francisco and Los Angeles.

But he made the positive announcement that local terminal plans have so far developed that on September 1 all the steam trains which now operate out of the North Bank station will be taken into the Union station and that all the freight trains now handled adjacent to the Union station will be taken care of at the new Guilds lake terminal.



Carl R. Gray, president of the Union Pacific system (above), who asserts connection with South-Central Oregon is definite pledge of all parties connected with huge railway controversy. Below—Harry M. Adams, vice president in charge of traffic, who is in Union Pacific party on visit of study and inspection.

Lumber Market to Remain Steady for Coming Six Months

Northwest lumber market will be steady for the next six months, according to a review of the trade given in the August issue of the "Four L Bulletin." Further expansion of output is not anticipated and neither is an enhancement of the present total output looked for. The only material change anticipated is the discontinuance of high shifts for a few months. Manufacturers and wholesalers agree that buying will probably continue at about the present aggregate volume for the remainder of the year with perhaps a short spurt immediately after harvest. The late spring rail trade demand and the Atlantic coast trade have temporarily reduced coast dimension stocks.

Car Strikes Woman; Driver Is Arrested
Mrs. T. J. Hill, No. 4420 46th street southeast, was bruised late Monday when an automobile struck her while she was waiting for a street car at Third and Morrison streets. Mrs. Hill was crushed against another machine, which was parked at the curb. T. J. Cresap, driver of the car which struck Mrs. Hill, was arrested and charged with reckless driving. Cresap lives at No. 128 East 34th street. Mrs. Hill was treated at emergency hospital.

STRIKE IS BAD

Speaking generally about the business condition he said: "Business is good in every particular except one—the railroad strike. But I am glad to say that on the O-W, R. & N. employment is being maintained at about 70 per cent and on the Union Pacific system as a whole at about 50 per cent. Our service has not been interrupted and we do not expect it to be."

President Gray declined to predict the time when the railroad strike will be adjusted and indicated strongly that so far as the railroads are concerned the matter is in the hands of the federal labor board.

Accompanying him on his trip to Portland are Harry Adams, general traffic manager of the Union Pacific, and J. L. Hauch, his assistant.

Metschan Residence Looted by Thieves; Plunder Is Valuable

The residence of Phil Metschan, owner and manager of the Imperial hotel, was ransacked completely sometime Sunday night and household effects amounting to a considerable sum in value are believed to have been taken.

Metschan and his family are out of the city.

but always ask for **Bluhill Green Chile Cheese**

Chehalis to Install Own Lighting Plant
Chehalis, Wash., Aug. 1.—At a meeting of the city commission Monday bids were opened installing the new city lighting system. The Astoria Electric company bid \$9832.25, the city furnishing the material, which will cost \$8777. As the estimate for the cost is \$14,859.78, the bid was rejected as being too high. The city will put in the system, a motion to that effect being carried unanimously.

Don Able resigned as city police judge and W. H. Spahn was named by Mayor Long to succeed him.

DROPS DEAD IN STORE
Astoria, Aug. 1.—John Nordlund, an Olney rancher, fell dead Monday while making some purchases in a local drug store. Heart trouble is said to have been the cause of his death.

the city and the full value of articles stolen from the house cannot be determined until the family returns. The burglary was reported to the police by Jake Bolland, caretaker, who did not know of it until Monday morning. The home is located at No. 564 Ladd avenue.

TO DEDICATE STATE PARK
Chehalis, Wash., Aug. 1.—President St. John informed Citizens club members Monday that he is in communication with the state park board and that the dedication of the state park in Jackson Prairie will take place the latter part of August, immediately preceding the Southwest Washington fair.

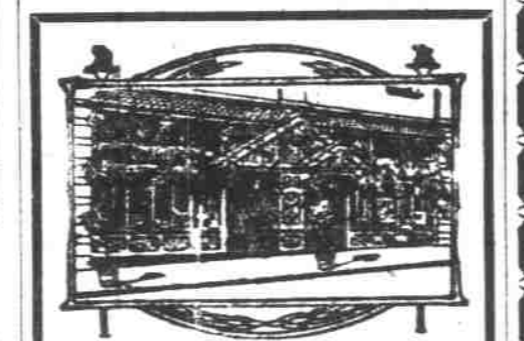
Cocoon Oil Makes A Splendid Shampoo

If you want to keep your hair in good condition, be careful what you wash it with.

Most soaps and prepared shampoos contain too much alkali. This dries the scalp, makes the hair brittle and is very harmful. Mulsified cocoon oil shampoo (which is pure and entirely greaseless) is much better than anything else you can use for shampooing, as this can't possibly injure the hair.

Simply put two or three teaspoonfuls of Mulsified in a cup or glass with a little warm water, then moisten your hair with water and rub it in. It will make an abundance of rich, creamy lather, and cleanse the hair and scalp thoroughly. The lather rinses out easily and removes every particle of dust, dirt, dandruff and excess oil. The hair dries quickly and evenly, and it leaves it fine and silky, bright, fluffy and easy to manage.

You can get Mulsified cocoon oil shampoo at any drug store. It is very cheap and a few ounces is enough to last everyone in the family for months. Be sure your druggist gives you Mulsified.



HAZELWOOD PASTRY

You will find here a delightful assortment of fine wafers for service with cream or for afternoon teas.

A Few Popular Varieties

- Chocolate Souffle 60c per lb.
- Fruit Drops
- Brighton Biscuits
- Cocoonut Cookies
- Lady Fingers
- Macaroons 80c per lb.
- Specier Biscuits
- Orange Drops
- Cocoonut Bars
- Parisian Wafers
- Shrewsbury Wafers
- Nut Wafers 1.00 per lb.

The HAZELWOOD DAIRY STORE
126 Tenth Street

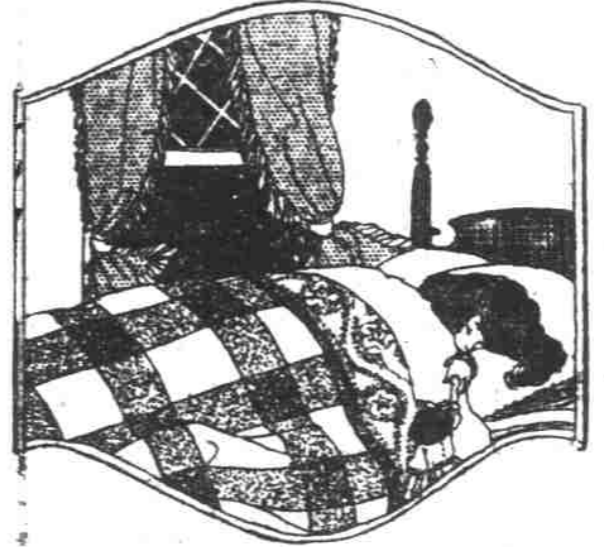
BROADWAY HAZELWOOD PASTRY DEPARTMENT
127 Broadway

Lipman, Wolfe & Co. will remodel or repair your furs—and lower "Summer prices" for this work now effective.

Lipman Wolfe & Co. Merchandise of Merit Only

Pure Wool, Virgin Wool, Blankets Close to Present Wholesale Cost Such Are the Possibilities Here Now in the August Blanket Sale

Every pair of the blankets bought before the recent heavy advance in the price of raw wool and all now marked on the basis of their cost to us, not according to present market quotations. Such are the savings, people should be ordering these blankets by mail if unable to come to the store during the August Sale.



66x80-Inch Wool Blankets in New Plaid Patterns \$6.95 Pair

—One seldom sees blankets of this quality priced as low as \$6.95—the price in no way indicating the real value. They're pure wool blankets in the popular block plaids and in the most wanted colors.

- \$7.95 for the nationally famous "Kenwood" blankets. They're single blankets woven 100 inches wide and shrunken to 72x84 in. Firmly bound with overcast worsted. Solid colors and plaids. **\$7.95 Each**
- \$8.95 for huge, warm, pure wool blankets that weigh full five pounds. Cold nights are coming—even now such blankets are needed. Assorted plaid patterns. 70x84 inch size. **\$8.95 Pair**
- \$11.50 for Scotch plaid blankets—and these pure wool blankets are truly "Scotch" in color and design. They're big, too—70x84 inch size—and priced far below the usual figure for this August Sale. **\$11.50 Pair**
- \$15.00 for beautiful, soft blankets of the finest of pure Virgin wool. We'd have to pay almost \$15 wholesale for these blankets if we were to buy more of them today. 72x84 in. size. Plaid patterns. **\$15.00 Pair**

The August Blanket Sale on the Second Floor

Preventatives Against Mosquitoes, Moths, Fleas, Flies, Ants and Various Germs

- 4oz. Oil of Cedar (for moths) . . . 50c
- 10 oz. Borax (for ants) . . . 15c
- 7 oz. Cedar Naphthalene (for moths) 20c
- 1 1/2 oz. Insect Powder . . . 25c
- 12 oz. Moth Balls (for moths) . . . 20c
- 4 oz. Sheep Dip (for fleas) . . . 25c
- 1 oz. Oil of Lavender Garden (for flies and mosquitoes) . . . 20c
- 8 oz. Peroxide (for germs) . . . 25c

Drug Square—First Floor

Lisle Vests 50c For Women Who Would Get Their Full Measure of Summer Comfort

—Cool summer vests of lisle in plain and ribbed stitch. In tailored style with band tops. Flesh tint and white.

—At \$1 to \$1.50 are girls' "Globe" union suits that are shrunken and tailored to fit. Sizes 2 to 16 years.

—Women's step-ins of lisle, lace-trimmed and with elastic at waist—they're priced at 75c and \$1.

First Floor—Lipman, Wolfe & Co.

Drastic Price Reductions on 200 Finer Wash Dresses

—The women who have seen the many and beautiful washable summer dresses on our third floor are able immediately to realize the importance of this announcement.

Many of the Dresses Going at Less Than Half Original Price

- Dresses of Ratine
 - Dresses of Linen
 - Dresses of Organdy
 - Dresses of Normandy Voile
 - Dresses of Dotted Swiss
 - Dresses of French Voile
- Most Every Desirable Color

The Reduced Prices Tomorrow **\$8.95 and \$15.00**

On the Third Floor—Lipman, Wolfe & Co.

New Fall Showing of Pacific Package Goods

—A multitude of dainty things to be made—with complete directions and all the materials contained in each package. New models—new designs—by far the best display we've ever shown.

On the Fourth Floor

Revnon Pound Paper Special at 39c

—Good quality writing paper that meets practically every requirement. Each pound contains 72 sheets of paper. A good selection of delicate shades.

—Envelopes to match are 15c a package.

On the First Floor

Three Essentials TO MATERIAL SUCCESS—

Your Bank Account
Your Will
Your Life Insurance

THE SECOND YOUR WILL

WE assume responsibilities in life that are not terminated by death.

Material possessions left at death may be a wonderful power for comfort and protection—or an influence which will prove vastly more destructive than poverty.

A thoughtfully drawn will, in the hands of reliable, conscientious executors, reflects your own guiding hand in the lives of those you love.

The United States National Bank through its Trust Department will carry out your wishes to the letter, giving your beneficiaries the full benefit of its vast financial experience, as well as the kindly assistance so needed by those who are not used to the handling of money.

The United States National Bank
Sixth and Stark

"One of the Northwest's Great Banks"

For the thirsty workman, nothing is so cooling and refreshing as a glass of

Blitz

The Drink That Fits

In Bottles On Draught Everywhere

Portland Brewing Company

This Store Uses No Comparative Prices—They Are Misleading and Often Untrue