

# SENATORS VISIT WHITE HOUSE ON STRIKE SITUATION

By David Lawrence  
(Copyright, 1922, by The Journal)  
Washington, July 21.—United States senators are getting restless and anxious over the industrial situation. Several of them flocked to the White House today to find out if legislation could cure the trouble and bring peace. Others told Mr. Harding that if there was going to be any allocating of coal they wanted to know about it. Senator Lodge, Republican leader, said for instance, that he hoped to see that New England would get its share.

The situation has reached a point where the effect of continued industrial warfare may be felt in the political campaign. The department of commerce issued a significant statement saying that the rising tide of business recuperation was being arrested by the rail and coal strikes. The Republican party has much to lose this fall if conditions approaching their campaign pledges are not realized by the rank and file.

**SEE TROUBLE AHEAD**  
Many of the Republican leaders know how close the connection is between industrial peace and political success next autumn. Senator James Watson of Indiana came to the White House with Senator Cummins and the net effect of their visit was a determination to reason with the rail executives and see if they wouldn't waive the single obstacle that stands in the way of agreement, namely, a restoration of seniority rights to the men who return.

The word has gone out that the Northwestern roads are ready to settle and that many of the Southern roads would do likewise. The Eastern executives are unyielding. Will they put the Republican party in a hole by prolonging the strike beyond the point of political safety?

There always has been an affinity between the railroads and the Republicans here and the latter now are trying to see whether their influence counts for anything.

**HARDING WAITING**  
Scarcely of coal for next winter is making senators apprehensive. If the house of representatives were in session there would be incessant pilgrimages from the capitol to the White House of house members. As it is the senate reflects the general uneasiness which is felt throughout the country over the industrial situation.

The president is listening to what the senators tell him, but as for rationing of coal that is somewhat premature. Senator Kellogg didn't seem to think much coal would be mined unless the strike was settled at once. The White House is waiting to see what effect the invitation to the operators to resume opening to the mine has on the amount of coal mined. Several days may elapse before another move is made.

**WOULD SEIZE MINES**  
Some senators, like Pomerene of Ohio, are inclined to think the federal government could seize the coal mines and operate them until the emergency is past. Other constitutional lawyers

doubt it. "There is no question, however," that the states exercise the mines and with the aid of the federal government arrange for regulation of interstate shipments. These moves are largely academic as yet, for until definite figures are available on coal production in the next 10 days no drastic course will be adopted.

The rail situation gives better promise of a settlement. Pressure by individual senators on Eastern rail executives undoubtedly would be followed by persuasive arguments from quarters influential with the railroads just as soon as the danger of a continued tie-up is fully realized.

**FEAR BREAKDOWN**  
While the executives protest conditions are fairly good, officials here do not share that optimism and rather fear a general breakdown of the transportation system of the country unless peace is speedily obtained.

The decision of the circuit court of appeals in Chicago upholding the rights of the United States labor board, was welcomed here as a step forward and one which would probably make roads like the Pennsylvania and the necessity of obeying the United States labor board less the confidence of the railway employees in the board's power be adversely affected.

More legislation at this time is unlikely. The settlement, when it does come, will be along the line of making the present legislation respected. The transportation act provided that adjustment boards be set up in various regions.

The railroads have by one move or another delayed the establishment of the boards. Dilatory moves have caused a loss of faith. On top of this the railway employees have flouted the power of the labor board to adjust wages when the main purpose of the transportation act was to have an impartial tribunal to fix wages. The solution lies in making the decisions of the labor board respected and officials here are not yet ready to believe this impossible.

## 'Plane Forced to Land; No One Is Hurt,' Wires Denby

Washington, July 21.—(I. N. S.)—"Airplane made forced landing. No one hurt."

That was the reply today of Secretary of the Navy Denby to the dispatch of Acting Secretary of the Navy Roosevelt inquiring for details of the accident over the great wall of China, in which Denby was reported to have barely escaped serious injury. Denby's cable, sent yesterday from Tien Tsin, added that details of the accident had been cabled to Secretary of State Hughes by Jacob Gould Schurman, American minister at Peking.

## Accidentally Shot At Target Practice

Minneapolis, L. I., July 21.—(I. N. S.)—First Lieutenant John F. Roulet, army aviator, stationed at Mitchell flying field, was accidentally shot and killed on the pistol range, it was announced today. The shot was fired by Lieutenant Robert Purcell, who is undergoing a course of instruction in the reserve officers training school.

**SCHOOL BONDS VOTED**  
Harrisburg, Or., July 21.—Voters of the Bussey school district, near here, unanimously approved a \$1600 bond issue for erection of a new schoolhouse.

# KU KLUX KLAN TEXAS ISSUE IN PRIMARIES

Dallas, Texas, July 21.—(I. N. S.)—With Ku Klux Klan and anti-klan forces playing a huge factor in one of the most bitterly contested primary campaigns ever held in the state of Texas, closing speeches were made by most of the candidates at various points today. Voting in the primary takes place tomorrow.

While klan sentiment against United States Senator Charles A. Culberson, who is seeking to succeed himself, has not been manifested to a marked degree, he has declared himself as opposed to the klan.

The principal candidates for the senatorial nomination besides Culberson are Cullen P. Thomas, an outstanding prohibitionist; Earl B. Mayfield, president of the state railroad commission; ex-Governor James E. Ferguson, supporter of organized labor, also favorable to the amending of the Volstead law to permit sale of beer and light wines; Clarence Osley, assistant secretary of agriculture at Washington in the Wilson administration, and R. L. Henry, an ex-congressman.

Henry, during his campaign, has openly announced that he is a member of the Ku Klux Klan and says he believes a member of the klan should sit in the United States senate.

For the gubernatorial nomination, Governor Pat Neff is seeking reelection and is opposed by Fred B. Rogers, running on a farm-labor union platform; Harry T. Warner, for years a prominent newspaper editor, who entered the race late, and W. W. King, a farmer, who is running "on his own."

Political wisecracks today predict that unless some candidate should receive an unlooked for majority of votes cast in Saturday's primary, the second primary on August 26 will see Senator Culberson fighting it out with Commissioner Mayfield and Governor Neff opposed by Fred S. Rogers.

## Soldier Who Took Message to Garcia Gets Hero Award

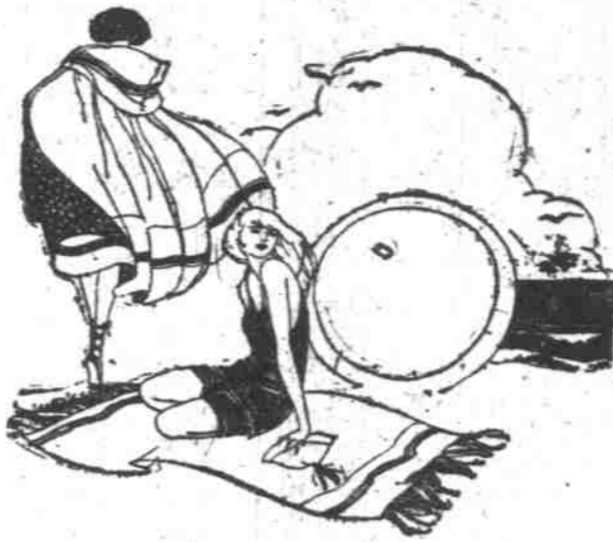
Washington, July 21.—(U. P.)—Belated recognition of the man who carried a "message to Garcia" was accorded by the war department today when it announced the award of a distinguished service cross to Major Andrew S. Rowan of San Francisco, retired, the hero of the incident.

At the outbreak of the Spanish-American war in 1898, Rowan, then a lieutenant, under disguise, entered the enemy lines in Oriente, crossed the island of Cuba and not only succeeded in delivering a message to General Garcia, but, his citation says, secured secret information relative to existing military conditions in the region of such great value that it had an important bearing on the quick ending of the struggle and the complete success of the United States army.

The Moths Ate Hungry for Fine Furs—But Neither Moths, Nor Fire, Nor Burglars Can Reach Them in Lipman, Wolfe's Vaults  
Telephone Broadway 7001 and a Special Wagon Will Call for Your Furs

# Lipman Wolfe & Co.

"Merchandise of Merit Only"



## Exceptional Selling of Fine Wool Bathing Suits for \$3.45

—They're the best suits we've seen in a long time at a price as little as \$3.45—and they are in the favorite round-necked athletic style—perfect fitting suits in smart heather mixtures with striped skirts; also a few in solid colors. Sizes 36 to 44; at \$3.45. —Other women's bathing suits—wool and wool-mixed; many in the new rib-stitch effect; at \$3.95, \$4.50, \$6.95, \$7.50 and to \$15.00.

—Bathing tights, with or without feet—body and trunk tights; special at 95c, \$1.25, \$1.75, \$2.50 and \$2.75. Bathing socks at . . . \$1.75 Bathing shoes .50c to \$1.50 Bathing caps . . . . .65c White belts . . . . .35c

On the Fourth Floor—Lipman, Wolfe & Co.



## Girls' Middy Dresses at Drastic Reductions \$2.95 \$3.95 \$4.95

—"Jack Tar" and "Paul Jones" middy dresses in 6 to 14 year sizes. Some are all-white. Others are white with navy or Copenhagen blue collars, and still others in solid navy or Copenhagen blue; also some of unbleached muslin. One and two piece styles trimmed with braid and emblems. —Girls' one and two-piece middy dresses of white jeans cloth with colored collars; also middy dresses of rose or Copenhagen gabardine, Venetian or jeans cloth. Sizes 16 to 20 years—special at \$5.95.

On the Fourth Floor—Lipman, Wolfe & Co.



## Boys' Sturdy Play Togs to Save the Better Clothes

Khaki breeches that lace at the knee; at \$2.50. Long khaki trousers with cuff bottoms; at \$2.50. Khaki knickerbockers; 6 to 16 year sizes; \$1.35. Khaki sport shirts with short sleeves; at \$2.00. Khaki sport blouses with short sleeves; at \$1.00. Khaki shirts with military collars; priced at \$1.25.

## Boys' Wool Suits at \$11.45

—Many of them with two pairs of trousers. These suits are of light or dark tweeds, homespun or cassimere mixtures; the coats are in belted style and they are full-lined while the trousers are cut full and roomy—all fully lined. 7 to 16 year sizes.

On the Fifth Floor—Lipman, Wolfe & Co.



Now—At Lipman, Wolfe's—the

## "Clothing Sale Supreme"

A Topnotch Event That Embraces Only Clothing of Topmost Qualities, a Fact Plainly Evident When We Say That This Selling Includes

## "Stein-Bloch" and "Langham" Suits

—besides other standard suits. All of them are Lipman, Wolfe suits—from the regular Lipman, Wolfe stocks—every suit meeting this store's exacting demands as to quality, workmanship and style. Three groups—at three extraordinary prices—

**\$28 \$32 \$38**

On the Fifth Floor—Lipman, Wolfe & Co.



A "Ten Strike" Repeated—

## Men's Pongee Silk Shirts Special at \$4.50

The Ones With Collars to Match

—For vacation wear there are no shirts more suitable than these—there's an outdoor ruggedness in the fine quality pongee of which they're made, and they launder so beautifully.

—They're shirts for "about town" also—very few shirts can compare with them for business or street wear. Expertly tailored are they, and emphatically unusual value at \$4.50.

## These Clearance Items for Men

Leather belts . . . . .75c Hose at 35c pr., 3 prs. \$1  
English golf coats . . \$9.95 Madras shirts . . . \$1.65  
Madras pajamas . . \$1.65 Wool bathing suits . \$3.65  
Muslin nightshirts . \$1.00 Silk knitted ties . . \$1.95  
Men's Section—On the First Floor—Lipman, Wolfe & Co.



## 250 Women's Spring and Summer Garments

for Clearance in a Hurry at One Extremely Low Price

**\$15**

100 Finer Wash Dresses at . . . . . \$15  
50 Tailored Tweed Suits at . . . . . \$15  
65 Coats and Suits now at . . . . . \$15  
25 Printed Crepe Silk Dresses . . . \$15  
10 Imported Knitted Wool Dresses: \$15

—And every one of the 250 garments from our regular stock—in some instances the sale price approximately half the original price. Quantities limited, as the enumeration above will show. Choice at \$15.00.

On the Third Floor—Lipman, Wolfe & Co.

## Chocolate Walnut Fudge—Special

—for Saturday Only

at 24c Lb.

—A whole pound for 24c—but a pound won't seem enough, so delicious is this fudge—and it's pure all the way through.

On the First Floor.

\* \* \*

## Sturdy Canvas Hammocks \$2.75

—and at \$4.50 and \$6.50. Made of heavy white or striped canvas—some with scalloped valance. Very useful for outing or home use.

On the Fifth Floor.

\* \* \*

## A Demonstration Here Each Day

## EVERWAVE

A New Harmless Way to Wave Your Hair

—An expert here at Lipman, Wolfe's to explain the use of this "wonder fluid" that makes beautiful wavy locks of the straightest hair. Women should not fail to see this demonstration.

On the First Floor.

\* \* \*

## "Holeproof" Silk Socks for Tots Are \$1.35

—and \$1.50. Three-quarter socks in dropstitch effect, with wide turn-down cuffs. They're "Holeproof" socks—mothers know what that means—and the hose are in black, cordovan or white with colored tops.

## Imported Golf Hose for Women

—Women who prefer to golf in knickers will be interested in this display of the new golf hose from Scotland and England. They're all-wool, in the three-quarter length with turn-down cuffs in contrasting colors—and they're fashioned to fit. Splendid hose for outing wear also.

On the First Floor.

\* \* \*

## Going On a Picnic? Take These Along

Wax Paper, 15 sheets to roll; 3c  
Paper Napkins, 100 for . . . 15c  
Paper Plates—in 8 and 9 inch sizes—at 8c dozen;  
2 dozen for . . . . .15c  
Paper Plates; 6-in. size, 5c doz.  
Paper Drinking Cups . . . 8c doz.  
Paper Spoons . . . . .5c doz.

On the First Floor.

\* \* \*

## Toilet and Bath Soaps

—the Better Kinds Here

Vanity Bath Soap; 4 odors . . 25c  
Societe Hygienique Bath Soap . 25c  
Floral Bath Soap; 6 odors . . 39c  
Woodbury's Facial Soap . . . 19c  
Cuticura Soap . . . . . 22c  
Societe Hygienique Lemon Soap . . . . . 35c  
San Remo Baby Castile Soap . . 8c  
Resinol Soap . . . . . 20c  
Certified Witchhazel Soap . . 25c  
Palm Olive Soap 10c—3 bars 25c  
Creme Oil Soap 10c—3 bars 25c  
Violet Glycerine Soap . . . 10c  
Peroxide Bath Soap; 3 bars . 25c  
Packer's Tar Soap . . . . . 20c  
Pear's Scented Soap . . . . . 22c  
Myreal Castile; large bars . \$1.25

On the First Floor.

# Build a happier home in Dunthorpe

TO live in Dunthorpe will be like living in a world of finer and more wholesome things. A country home in this wooded district is a home that combines all the virtues of the country with all the conveniences of the city, but excludes the undesirable features of city life. It is a home you and your family can enjoy to the fullest extent.

Only a 20-minute ride to restful, healthful Dunthorpe, where you can delight in magnificent views of mountain and river, in the outlook over beautiful neighboring lawns, in the improvement of your own home surroundings. All city conveniences—gas, electricity, water, good roads, fine schools—no bonded assessments to pay.

There is no reason to delay; build that country home and enjoy "city conveniences with country advantages."



—or consider, each for its own particular charm:

**EAST-MORELAND**  
A beautiful district of beautiful homes, close to Public Golf Links.

Phone Broadway 5754 for appointment

**LADD'S ADDITION**  
A close-in residential section of most desirable character—congenial neighbors and handsome homes.

**WEST-MORELAND**  
—beyond the city's dust and toll. Near Eastmoreland, the Public Golf Links and Reed College.

# LADD ESTATE COMPANY

OFFICES: 246 Stark Street, Portland, Oregon