

CONTROL SPEEDERS WITHOUT USE OF POLICE, IS SUCCESS

Hardesty 'Bumps' Prove to Be Effective in Causing Motorist to Drive Within the Law.

Checking motor speeders without the aid of a policeman sounds rather incredible, but that is just what happens in many towns and cities in California. Portland, too, has found the use of the Hardesty "bump" an effective means of making motorists travel within the limits of the speed law.

The Hardesty "bump," or "thank-you-mam," as they are known in California, is a depression in the surface of the street having that when passed over by a machine traveling at a reasonable rate of speed is nothing more than a dip. At a rate of speed in excess of 20 or 25 miles an hour it is a decided bump. In addition, there is a "whip" effect that is uncomfortable to the occupants of the machine.

In placing the "bumps" a set of two is laid at each street intersection, one on each side of the cross street. While the first "bump" may be regarded by the speeder merely as a defect in the pavement, the second one makes him realize that all is not as it should be. When the second series is hit the machine is almost instinctively slowed down. From thence on the operator drives with due caution and regard for the law, and incidentally keeps within the law.

Ten years ago a series of "bumps" were placed in Jessup and Jarret streets between Union and Williams avenues. There are eight "bumps" on each street. City officials, impressed with the success of the "bump" as a means to slow down speeding cars, are now considering installing them in other parts of the city where traffic would be endangered by speeders. The cost of installation is negligible, for all that is done is to make the dip when the street is being graded and the pavement laid. Once in there is no maintenance other than that ordinarily on hard surface streets.

California, one of the greatest states in the Union for automobile tourists, has found the "bumps" so effective that practically every town has them. They are installed on city streets along which the state highways pass. Upon encountering the "bumps" on the road at the corporate limits the motorist slows down from state high speed to town speed.

Normally the "bumps" are built to be effective on speeds in excess of 20 miles an hour. This can be varied by the road engineers for any other speed.

One of the best features of the device is that while it is disagreeable to those riding in the speeding car it is not dangerous through any action that might deflect the course of the machine or otherwise cause the driver to lose control. To the unsuspecting the series of bumps are disconcerting but the veteran will slow down before he passes the first one.

Legal Questions Now Hold Up Road Work On Pacific Highway

Eugene, May 17.—As a result of the controversy over the legality of the contract which the state highway commission made with Lane county for the grading of the Pacific highway between Junction City and Goshen, involving \$60,000, all road work in the county in which the state has a part except the Pacific highway, is being held up. This affects the surfacing of the Low Pass and Doyle Hill and Deerhorn sections of the McKenzie highway.

Clyde M. Johnson, district attorney, has rendered an opinion that the contract is illegal, since the law states that no county court has power to incur debts of such character. This law has not been rigidly enforced in this or other counties of the state, according to County Judge Barnard, who favors paying the bill, in spite of legal technicalities involved. It is conceded that the bill is a just one, although considered a few thousand dollars too large.

Willys Re-elected Head of Motor Firm

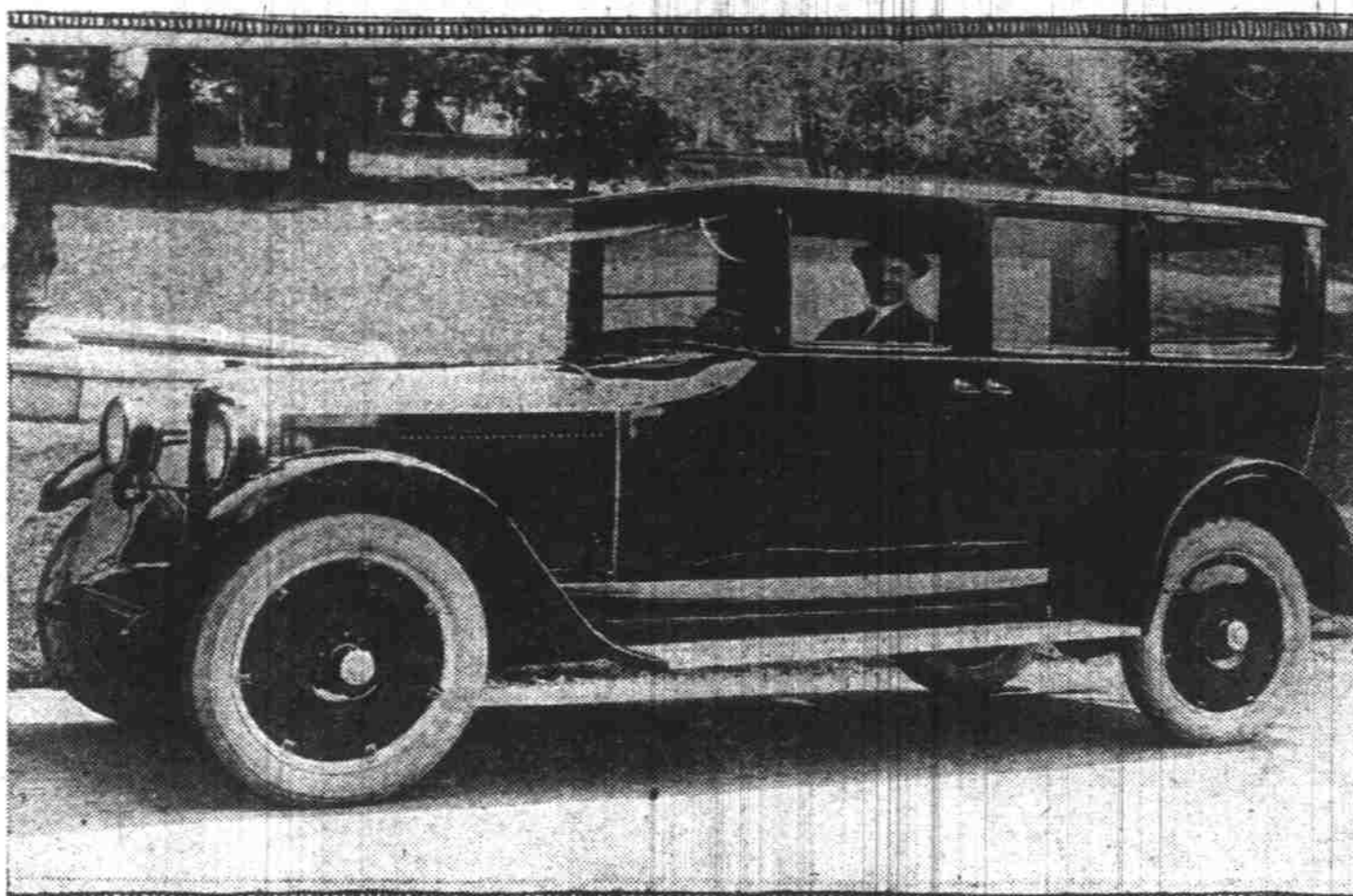
John N. Willys was re-elected head of the Willys-Overland, Inc. according to information received by Frank C. Riggs, manager of the Portland branch of the Willys-Overland Pacific company. Charles B. Wilson was elected vice president and general manager at the same election. Isaac Kinsey and F. A. Judson were also chosen as vice presidents.

All Northwest Gypsy Tour to Be at Seattle

This year the motorcycle fans of the Northwest will hold the annual "Gypsy tour" at Seattle. The event will be staged for three successive days and will be entered by riders from all parts of the Northwest. The date set for the tour is June 17, 18 and 19. Short races and hill climbing will be some of the competitive features.

USE CHAINS FOR MUD
A car that is driven over a muddy highway should have chains attached to the wheels. The chains should be tighter than usual, because when too loose the wheels will sometimes spin around inside the chains when the car is stuck.

PAIGE 66-6 SEDAN IS ATTRACTIVE



E. R. Van Dyke, salesman for Cook & Gill company, at the wheel of the 66-6 sedan he sold to Edward Holman & Son. Car has nickel-plated radiator, disc wheels and drum type lights.

DISTANCE SHOWN BY TOURIST TABLE

The mileage table prepared by the Oregon Tourist and Information Bureau shows mileage of principal points in the state from Portland. The mileage is figured on roads passable by automobiles and is for tourist use.

The mileage from Portland is as follows:

Albany, 75 miles;	Ashland, 222 miles;
Astoria, 100 miles;	Burns, 395 miles;
Cannon City, 317 miles;	Corvallis, 86 miles;
Clatskanie, 123 miles;	Grant, 277 miles;
Clatskanie, 123 miles;	Klamath Falls, 386 miles;
La Grande, 258 miles;	Lakeview, 436 miles;
Medford, 309 miles;	Oregon-California state line, 444 miles;
Prineville, 223 miles;	Roseburg, 199 miles;
Salem, 51 miles;	The Dalles, 81 miles;
Tillamook, 107 miles;	Walla Walla, 279 miles.

Snow in Bitter Root Mountains Forces a Break in Motor Trip

Forced by snow in the Bitter Root mountains to ship their car from Wallace, Idaho, to St. Regis, Mrs. Marguerite Clark and Miss Elizabeth Boye of Portland had their transcontinental trip broken by a short rail trip, according to a letter recently received here by J. J. Miller, sales manager of the local branch of the Willys-Overland Pacific company. The two women left Portland a week ago for Brooklyn, N. Y. It was planned to make the entire trip in an Overland roadster, but the snow in the mountain passes forced them to transport. They will return within six months by way of the Yellowstone trail.

Blue Mountain Road Is Temporarily Open

La Grande, May 20.—All roads in Union county are dry and in good shape in places they are rough but all are passable. The road between La Grande and Walla is in better shape than ever before and the remainder of the La Grande-Joseph Highway is also in good shape now. From here to Pendleton the road continues to remain open although a week ago when the first cars passed over the Blue mountains tourists were warned that it is possible that warmer weather will make parts of the road where the cars crossed on ice and frozen mud impassable again. Light cars have been coming across four mountains every day this week but heavy cars have some difficulty. As many as 12 cars have made the trip from Pendleton here in a day.

Ford Car Makes Good Record for Mileage

Chehalis, Wash., May 20.—A rather remarkable record has been made by George Courmyer, mail carrier between here and Riffe, for operating a motor car. Courmyer drives a Ford touring car and has made 57,000 miles to date. At the end of 22,000 miles the valves were reground for the first time, the car not missing a day's work during the time. Since then it has been laid up but three days for minor repairs. Courmyer's trip takes the greater part of the day and the car is laden with mail and passengers.

Washington State to Test Truck Load Law

Olympia, Wash., May 20.—An Olympia case that is expected to reach the Washington supreme court later, probably will determine whether or not Director E. V. Kuykendall of the department of public works has authority to prevent the highways from being ruined by overloaded logging trucks. The last legis-

Site of Snake River Bridge to Be Decided

A public hearing will be held May 23 at the office of the United States engineer in the new postoffice building for the consideration and location of the proposed highway bridge across Snake river in the state of Washington, near Central ferry. The construction of the bridge was authorized by congress last December subject to the interests of navigation.

THE SAGE SEE
Gassing with folks in the back seat when you're drivin', not only gets ye into an argment, but bleb to get ye into a jam, too.

OVERLAND FACTORY BOOSTS CAPACITY

Daily Output Now Above 400 Mark, and Increasing, Local Dealer Announces.

More than 400 Overland and Willys-Knight cars are now being put out each day by the factory, Frank C. Riggs, Northwest manager of the Pacific Overland company, said.

April production exceeded that of any April since 1917 and even with this large production orders continue to exceed it. The company is employing 8000 workers. It is adding to the force gradually and carries daily advertisements in the papers for skilled mechanics of various kinds.

Willys-Overland orders continue greatly in excess of production in spite of the fact that shipments exceed those of any April since 1917, Riggs said.

Without a dissenting vote preferred stockholders of the Willys-Overland, at a special meeting, ratified the proposal of the directors for funding of Overland

bank debt by a \$17,500,000 7 per cent bond issue, he said. The bonds will mature December 1, 1923.

"The action of the preferred stockholders constitutes one of the most important steps in the placing of Overland finances on a permanent, sound basis," he continued. "The management will make no predictions as to probable yearly production of the company, but it is understood that if production during the entire year is maintained on the basis of the first quarter, the Overland will have enjoyed one of the best years since the war."

"Difficulty in getting raw materials is holding back production to some extent not only with the Overland but with many other Toledo companies. This is especially true of steel products. Operating on greatly curtailed programs the steel companies were unprepared for the sudden reopening of business on so large a scale."

American Cars Lead In Brazilian Imports

Two Brazilian ports, Rio de Janeiro and Santos, imported 53 American cars in the period from March 19 to April 17, according to data prepared by W. L. Schurz, commercial attaché to Brazil. During this time the same ports imported 17 cars manufactured in other countries.

Forestry Service to Build Mountain Road

Hood River, May 20.—District forester T. H. Sherrard announced at the Apple Blossom banquet held here on Monday evening that the forestry department will rebuild the road from the Mt. Hood loop to Cloud Cap Inn in response to the demand for making the mountain accessible. However, owing to the attitude of the management of Cloud Cap Inn, certain minimum requirements are to be presented to the hotel management, and if these are not complied with, the forest service will withdraw the privileges extended to those behind the Cloud Cap Inn project and will lease the land to somebody who will make the improvements required.

Fagan Gives Personal Delivery of Machines

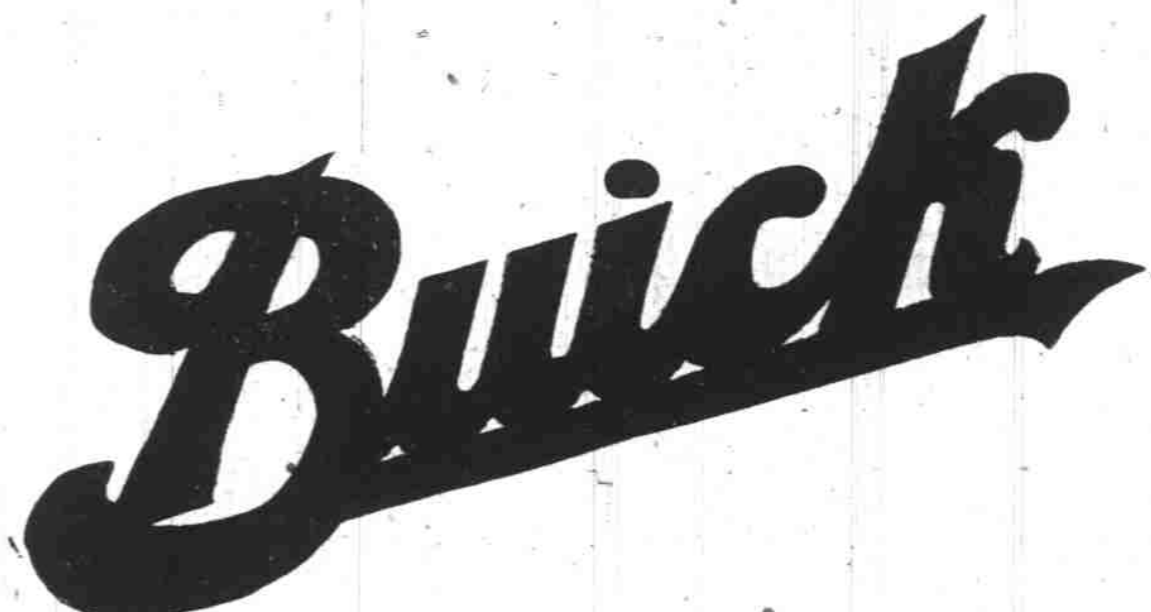
Charles C. Fagan, head of the Charles C. Fagan company, is a believer in personal service. Last week he made a sale of a Willys-St. Clair roadster and coupe to an Aberdeen customer. He delivered the car himself, after having them driven up. Fagan returned Tues-

Blewett Pass Now Officially Opened

Wenatchee, Wash., May 20.—County Engineer John Duff today declared Blewett Pass officially open but states that Snake River Pass is not expected to be open for 5 or 6 days. Machines have been going over Blewett for the past week although a quarter of a mile of the road was covered with snow. Last summer a great deal of work was done on the Blewett Pass road, the curves being lengthened and the road regraded.

Jail Sentences for Speeding Motorists

Toledo, May 20.—(I. N. S.)—"Impose jail sentences on speed maniacs. Fines have proved ineffective. Unnecessary accidents will continue, and the majority are due to speeding." So advised Municipal Judges Aaron Cohn and Samuel Young. Both are in favor of a city speeding ordinance that would call for prison or workhouse sentences for reckless drivers. The city speed ordinance now in effect carries only a fine and seldom makes an impression on the speed bugs.



Leadership Again Demonstrated!

1922 BUICKS Prove Their Wonderful Power, Sturdiness, Economy and Reliability in Four More Record-Breaking Exploits

First Car to Reach Huntington Lake!

A 1922 five-passenger Buick touring car won the Fresno Republican trophy for being the FIRST AUTOMOBILE TO REACH HUNTINGTON LAKE THIS YEAR. In keen competition with other cars the Buick scaled the 7300-foot summit of the Sierra and finished first, being officially checked in at 8:30 p. m., April 11, 1922.

First Into Yosemite Valley!

Five-passenger Buick touring car was awarded Camp Curry trophy for being the FIRST AUTOMOBILE OVER SIERRA-NEVADA MOUNTAIN SUMMIT VIA ANY OF THE REGULAR AUTOMOBILE ROADS LEADING INTO YOSEMITE VALLEY. The Buick was officially checked in by United States Chief Ranger and the manager of Camp Curry, at 4 p. m., May 2, 1922.

San Francisco-Portland Record Broken!

On May 2 a 1922 BUICK COUPE, driven by MRS. Z. KATHLEEN AYERS, lowered the SAN FRANCISCO-PORTLAND record by 3 hours 8 minutes, the official elapsed time being 22 hours 43 minutes for the 724.1 miles. Year after year Buick cars have startled motor-om by doing seemingly impossible things.

1000 Miles on 32 7/8 Gallons of Gasoline

A 1922 5-PASSENGER BUICK TOURING CAR, in 1000 mile continuous drive ending in San Francisco at 1:30 p. m., May 12, AVERAGES 30.4-10 MILES PER GALLON OF GASOLINE. This 1000 mile economy test was made under official supervision and the car used was an absolutely stock model.

RECORD AFTER RECORD HAS FALLEN TO THE SPEED, POWER, ECONOMY AND ROADABILITY OF THE BUICK FOR MORE THAN TWO DECADES.

These astounding performances of closed and open cars prove that 1922 Buick cars are of the same sturdy construction that has featured the Buick product for over twenty years.

Compare Buick performance, value, reputation for sturdiness and genuine service under all conditions with all other motor cars and YOUR CHOICE MUST BE BUICK.

What These BUICKS Have Done, All BUICKS Will Do

Howard Automobile Company

THE LARGEST DISTRIBUTOR OF AUTOMOBILES IN THE WORLD
12th and Alder Streets, Portland

When Better Automobiles Are Built, Buick Will Build Them

Next Owners' Instruction Class With Motion Pictures Will Be Held Tuesday, 8 P. M., May 23

White Trucks

Why pay for experience when you can borrow it from others—concerns in your own line who know White Trucks?

5-ton	\$4,500
3½-ton	4,200
2-ton	3,250
¾-ton	2,400

F. O. B. Factory

THE WHITE COMPANY
Flint and Hancock, Portland
Factory and General Offices, Cleveland

21 YEARS OF KNOWING HOW

The selling points of the DURANT are built in, not tacked on.

DURANT

PACIFIC MOTOR CO.
Broadway at Flanders St.
Broadway 7916

FOURS and SIZES

GOOD USE CARS

28-30 North Broadway
COVEY MOTOR CAR CO.
Broadway 6244