

THOMAS L. WAND PUT ON PUNTO SAN FRANCISCO

Steamer Will Make Stops North-bound at Eureka and Coos Bay, Taking Lumber Direct to South

In the service of the Charles L. Nelson company the steamer Thomas L. Wand has been placed on the San Francisco-Portland run, making stops northbound at Eureka and Coos Bay and southbound at Eureka and Coos Bay.

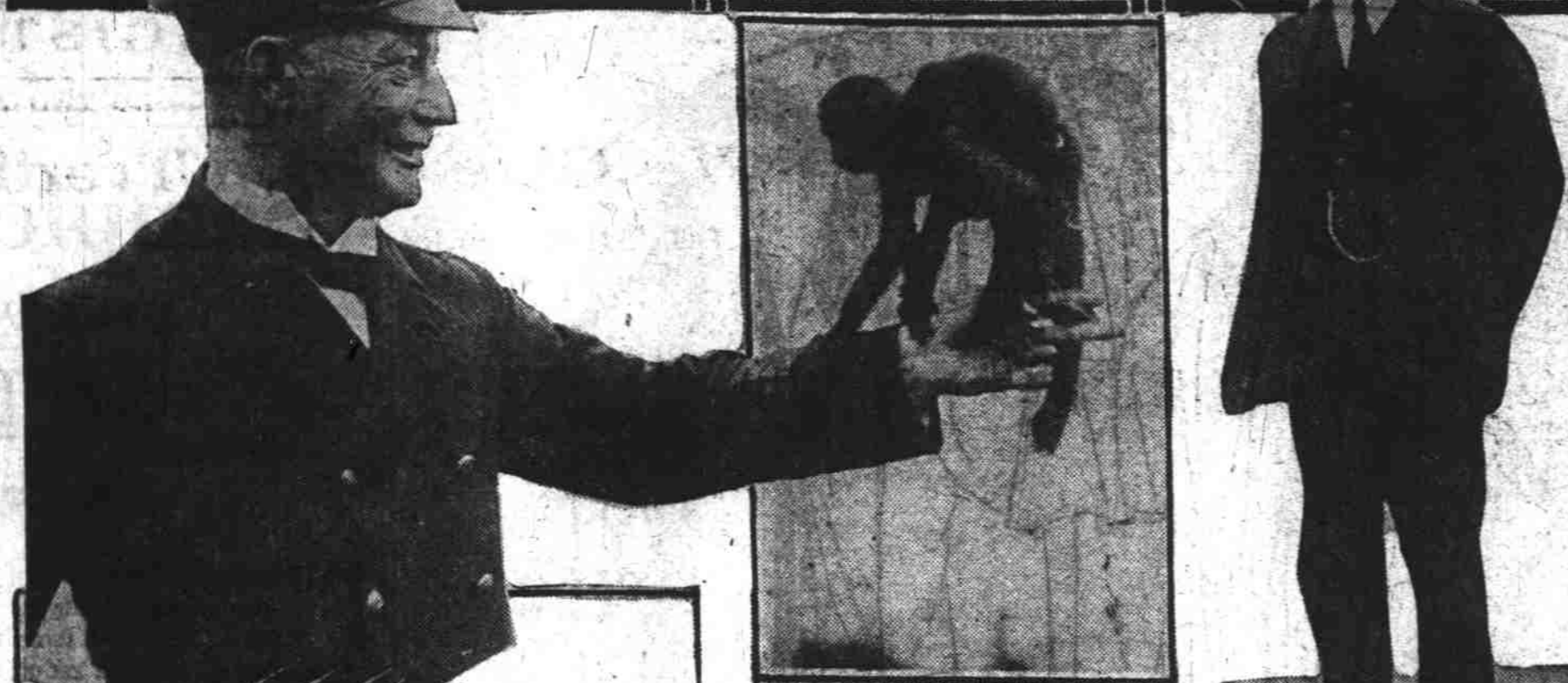
Announcement of the schedule of the Thomas L. Wand was made yesterday by the Oregon-Pacific company, local agents. The steamer sailed from San Francisco yesterday and will be due at Portland the latter part of the week. Eureka and Coos Bay as way ports between Portland and San Francisco have been controlled by the coasting steamships of the Admiral line. At present the Pacific Steamship company has the steamship Admiral Redman on the run, making stops both north and southbound. Captain Robert Jones has announced his intention of placing a gasoline boat on the run between Portland and Coos Bay.

GALLAGHER ASSISTANT TO ADMIRAL LINE'S MANAGER Seattle, April 29.—Appointment of Hugh Gallagher, one of the most widely known shipping men in the country, to be assistant general manager of the Admiral line, with headquarters at San Francisco, is announced today by A. F. Haines, vice president and general manager. The title of district manager, which was Gallagher's previous designation, is abolished.

Returning from a tour of world ports in 1905 after seeking first hand knowledge, Gallagher embarked on his shipping career when he became associated with the shipping department of the Standard Oil company, serving for three years in the Philippines. He joined the Alexander organization in 1914 and has been with the Admiral line and its predecessor, the Pacific-Alaska Navigation company continuously since then. He was also for a period general Eastern agent for the company with headquarters in New York, relinquishing that post to become manager of the California district.

H. S. EATON IS NEW LOCAL AGENT OF ADMIRAL LINE Floyd S. Bush, general agent of the Admiral line at Portland, will sever his connection with the Pacific Steamship company tonight, and the entire personnel of the office here will be changed. H. S. Eaton of San Francisco, who arrived in Portland last night with General Manager Haines, will assume command as general agent, and G. B. Ponda has been appointed agent on the general dock terminal. H. S. Eaton will continue in command of the local ticket office at Third and Stark streets, and Ozer will act as freight clerk from the shore end.

MOTORSHIP VALPARAISO LOADS GRAIN FOR EUROPE



Left: Captain S. T. Erelus and Jocko, "the monk." Right: C. M. Long, chief engineer of the big gas boat. Below: Rolf, a German police dog, who swears in Swedish. Swedish motorship Valparaiso at the Irving dock to take over 4000 tons of wheat for Scandinavian countries.

Ships as a general thing carry a mascot or some mascot, but Rolf, a German police dog belonging to Captain Erelus of the Swedish motorship Valparaiso, is one of the educated variety and, according to the master, has learned to turn out a first-class job of cursing in Swedish. The captain accused Chief Officer Palm of being late for duty on the Valparaiso's wonderful accomplishment as a sailor. Captain Erelus secured Rolf in Hamburg three years ago when he was a puppy and has been his companion on the seven seas sailing the Princessen Ingeborg, Annis Johnson and the Valparaiso. Nearly 30 years ago, when a

ship before the mast, Captain Erelus sailed into Puget sound in the old British police dog belonging to Captain Erelus of the Swedish motorship Valparaiso, is one of the educated variety and, according to the master, has learned to turn out a first-class job of cursing in Swedish. The captain accused Chief Officer Palm of being late for duty on the Valparaiso's wonderful accomplishment as a sailor. Captain Erelus secured Rolf in Hamburg three years ago when he was a puppy and has been his companion on the seven seas sailing the Princessen Ingeborg, Annis Johnson and the Valparaiso. Nearly 30 years ago, when a

accident commission for the week ending April 27. J. J. Thropp, chokerman, Headlands, Cal.; G. M. Danton, laborer, Newberg; C. F. Scroggins, logger, Oswego, and R. Morrison, hog feeder, Astoria.

MRS. ANNA M. ROBINSON Dallas, Or., April 29.—Mrs. Anna M. Robinson, 45, died at her home in this city, April 29, after a lingering illness. She was born at Kings Valley. Her husband, Archie Robinson, a son, a daughter, her mother, Mrs. Mary Watson, and a brother, J. E. Watson, all of this city, survive. She was a prominent member of the Rebekah lodge, which had charge of the funeral services.

Alleged Gunman of The Dalles Sought By U. S. Officials

The Dalles, April 29.—Or Ching, alleged gunman of the Hop Sing tong, or, as he has now been identified, according to R. P. Bonham, inspector in charge of the Portland immigration bureau, Chin Sic, supposed smuggler of narcotics from Mexico, was bound over to the grand jury late today on a charge of manslaughter.

Bond was fixed at \$2000 and Thomas G. Ryan, Portland attorney, and J. K. Carson of Hood River promised that it would be forthcoming by the first of the week. District Attorney Francis V. Galloway was allowed, by stipulation, to tell the committing magistrate what he expected to prove, thus obviating the expense of bringing witnesses here from Seattle and Portland for the preliminary hearing.

Bonham developed the fact today that Or Ching or Chin Sic has no passport, despite the fact that he is not a native born Chinese, and the government stands ready to take the supposed highlander in hand in the event the charges here fall through.

NEW BODY IS FORMED University of Oregon, Eugene, April 29.—Oregon Blade is a newly formed military organization formed on the campus for the purpose of petitioning the national military fraternity of Seab-

herd from Freewater to the state line has been tested. J. P. Madden of the bureau of animal industry will be in the Umpqua-Hudson Bay district next week to test every herd in that section. This work has been carried on in the west end of the county and also between Pettleton and Milton.

SLEDS MUST HAVE LIGHTS Yakima, Wash., April 29.—A hand sled is a vehicle and must carry a light visible for 200 feet, front and rear, after dark, according to Judge George B. Holden, in instructing a jury in a \$10,000 damage suit brought against E. D. Bannister, who ran into Earl Young, 12, while the boy was coasting. Bannister won the verdict.

DOCTOR, DENTIST NEEDED Freewater, April 29.—The secretary of the commercial club was instructed to communicate with the Portland Chamber of Commerce in an endeavor to secure suitable professional men to locate here. Since Dr. Gale left for his ranch the city has been without a physician. A dentist also is needed.

ENTIRE CLASS ON TRIP University of Oregon, Eugene, April 29.—On the first trip for an entire university geology class, Dr. Edwin T. Hodge and 18 students left Friday for the Umpqua region to examine geological formations and ore deposits.

hard and blade. Membership will be limited to 15 upperclassmen of unusual ability.

Late Model 4 Underwoods \$50
Late Model 5 Underwoods 60
Late Model 8 L. C. Smiths 60
Late Model 10 Remingtons 30
Noleses 50

ALL THOROUGHLY REBUILT AND FULLY GUARANTEED
MACHINES SENT ANYWHERE ON PACIFIC COAST FOR THREE-DAY EXAMINATION
TERMS IF DESIRED
ALL MAKES RENTED

RETAIL DEPARTMENT
WHOLESALE TYPEWRITER CO.
321 Washington St.
PORTLAND, OR.
PHONE EDWY. 7681
STORES—SAN FRANCISCO, LOS ANGELES, SEATTLE, SALT LAKE CITY.

HEADQUARTERS FOR LAWN FENCE AND GATES
With Wood or Iron Posts
Truth Wins and Pioneer Border
ASK FOR FREE CATALOG AND ESTIMATES
Phone or Write Construction Dept.

NORTHWEST FENCE & WIRE WORKS
(Manufacturers)
East Oak and Union Avenues
Portland, Ore. Phone East 7078.

420,000 Users ENTHUSIASTICALLY BOOST THE CORONA
THE PERSONAL WRITING MACHINE COMPLETE WITH CARRYING CASE \$50.00
ASK THE PERSON WHO OWNS ONE Guaranteed Rebuilt Machine of All Other Makes from \$10 Up
OREGON TYPEWRITER CO.
88 FIFTH, BETWEEN STARK AND OAK BROADWAY 7169

Automatic Refrigeration
Capacity machines, 500 lbs., 500 lbs., 1000 lbs., 2000 lbs., 3000 lbs.
These machines excel any machine manufactured in workmanship, economy of operation and services rendered.
Require no attention. No belts. No visible flywheel. No fouling of gas. Occupy very small space. Perfect automatic control.
Particularly adapted for homes, meat markets, etc. Consultation free.

Bell Ice Machine and Refrigerator Co.
63 East 8th St., Near Oak
PORTLAND, OREGON
Phone East 5972

MRS. PLASTER WINS DIVORCE
Dallas, Or., April 29.—A divorce decree was granted here by Judge H. H. Belt to Olive Plaster from Edward F. Plaster.

Ballroom Dancing Taught QUICKLY—CORRECTLY
Prof. MacFarlane
MURLARK HALL
232 and Wash. Sts.—Main East
5 CLASS \$1.00 Mon. Thurs. LESSONS \$1.00 Fri. & P. M. Private Lessons 11 a. m. to 7 p. m. Daily
NOTE—Prof. MacFarlane teaches every lesson personally.

TRANSPORTATION
Travel
Are You Going to Europe? Or the Orient? Or Around the World?
Why not get experienced and accurate information from one who has traveled extensively for the benefit of his patrons?
Secure Steamship Reservations and Tickets From

DORSEY B. SMITH
MANAGER
JOURNAL TRAVEL BUREAU
150 BROADWAY, PORTLAND, OR.
Phone Marshall 1079

OCEAN SERVICE
California
SAN FRANCISCO & PORTLAND STEAMSHIP COMPANY
For San Francisco
From Portland Alameda Dock
Steamer "Rose City"
Tuesday, 10 A. M. May 2
Thursday, 10 A. M. May 11
and every sixth day thereafter.

UNITED AMERICAN SERVICE WITH HAMBURG
TO PLYMOUTH, BOULOGNE, BRISTOL, LONDON
By New American-Flag Steamers
Resolute May 2, May 30, June 27
Rolland May 16, June 13, July 11
TO HAMBURG DIRECT
Sailings every Thursday, by the popular steamers Mount City, Mount Corvallis, Mount St. Helens, Mount Hood, Mount Jefferson, Mount Washington, with special attention to improved third class accommodations.

ASTORIA AND WAY POINTS STR. GEORGIANA
5 1/2 HOURS TO ASTORIA
Speedy, clean, safe, comfortable. Lvs. Daily (except Friday), 8 A. M.
NIGHT SERVICE
Lvs. Daily (except Sat.), 7:30 P. M.
Fare \$1.50 One Way—45 Round Trip
Connections made for all North and South beaches at Astoria.
Alder St. Dock
Broadway 6344
THE HARBINERS TRANSPORTATION CO.

AUSTRALIA
NEW ZEALAND AND SOUTH SEAS
Via Tahiti and Rarotonga. Best and Fastest Service from San Francisco every 23 Days.
Pacific Tour South Sea, New Zealand, Australia, etc., First Class.
UNION LINE S.S. CO. NEW ZEALAND
220 California St., San Francisco
Or Local Steamship and Railroad Agencies

INTERCOASTAL FREIGHT SERVICE
NAWSCO
(Regular service between Portland, Maine; Philadelphia, Boston, New York and Los Angeles; San Francisco, Portland, Seattle and Tacoma, via the Panama Canal.) North Atlantic & Western S. S. Co.'s 5000-ton steel vessels.
EASTBOUND
From Portland, Me. Boston, N. H. Phila. Balt. Wash. D. C. N. Y. Lvs. Portland, Me. every 14 days.
WESTBOUND
From Portland, Me. Boston, N. H. Phila. Balt. Wash. D. C. N. Y. Lvs. Portland, Me. every 14 days.
For Further Information Apply to THE ADMIRAL LINE, Pacific Coast Agents 101 Third Street Phone Broadway 4481

Freight and Passenger Service
Portland to South America and the Orient
TOYO KISEN KAISHA
S. S. "RAKUYO MARU" (for the May 8th)
S. S. "ANYO MARU" (for the May 20th)
(for Mexico, Balboa, Fern, Chile)
(BOTH 15,000-TON STEAMERS)

News of the Port
Arrivals April 29
From San Francisco, American steamer, from New York, via San Francisco, general; from San Francisco, American steamer, from New York, via San Francisco, general; from San Francisco, American steamer, from New York, via San Francisco, general.

AT WORLD'S PORTS
Astoria, April 29.—Arrived at 9:30 and left at 11:15. Steamer Hakuha Maru, from Astoria, arrived at 10 and left at 11:15. Steamer Hakuha Maru, from Astoria, arrived at 10 and left at 11:15. Steamer Hakuha Maru, from Astoria, arrived at 10 and left at 11:15.

PEOPLES GREENGRASS
"A dress-suit, evening-gown, and a pair of shoes, all made as one and begged and shouted 'It's the Greengrass'." — N. Y. Evening World.

POSITIONS OF VESSELS
San Francisco, April 29.—Vessels were reported in the following positions at 3 P. M.:
Mitsunaga, Vancouver to Yokohama, 650 miles west of Flatery.
W. P. Herrin, Honolulu to San Francisco, 193 miles west of Honolulu.
West Chappa, San Pedro to Yokohama, 240 miles west of San Pedro.
Empire State, San Francisco to Yokohama, 127 miles west of Honolulu.
Sun Juan, Seattle to Bristol Bay, 240 miles west of Seattle.

BOAT BLUE BIRD Excursion Dance
Come and Enjoy a Trip on This Wonderful Dance Boat Tonight EVERY SUNDAY NIGHT
Leaves Dock, East Morrison St., 8:00 P. M.—Returns 11:45

UHL BROS. Exclusive Distributors
330 Second St. PORTLAND, ORE.
WALL PAPER—PAINTS

100 NU-SINK 100
For your Drain Boards, Chairs, Toilet Seats, Bedsteads, Etc.
Department Hardware, Grocery, Wall Paper and Paint Stores, or if unable to procure locally, POSTPAID UPON RECEIPT \$1

Hotel Benson
Rates
PORTLAND, ORE.
PHONE EAST 7078

SEIBERLING-LUCAS MUSIC CO.
1257 FOURTH STREET