

PUBLIC PAYING RISE FOR FOWLS

Chickens are very scarce at this time and prices are higher generally. No change has recently been made in the price on the public market, but this simply caused most of the farmers to stay off the market because they could not

tain better prices from regular dealers. Instead of the public saving money in this lack of knowledge of market affairs by the market master, consumers were forced to pay still more money in regular shops. Within a few days the public will be given opportunity to purchase new crop Bermuda type onions from both California and Texas. The yellow stock will be from California and the Crystal Wax will come from Texas. Prices will be slightly lower than prevailing prices on old crop Oregon. Local onions never showed better quality for this period of the season than at present. White Salmon asparagus promises to be in quite fair supply during the com-

ing week. Initial receipts here during the week showed real asparagus quality. A few days of sunshine will bring out the broccoli or cauliflower. Present offerings are not only extremely high priced and are not worth the money, but are very scarce. HERO'S FUNERAL TO BE HELD Centralla, Wash., April 21.—The body of Julius Clevenger, son of Mrs. Caroline Clavinger of Doty, will be given a military funeral at Doty, Sunday, by members of the Grant Hodge post, American Legion, of this city. The boy was killed in action.

Don't Starve the Teeth

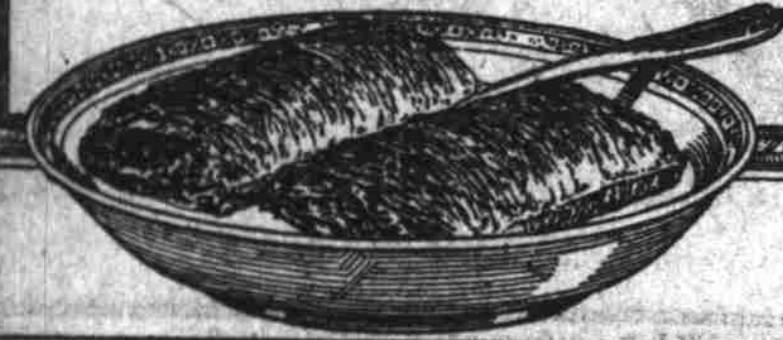
Food that must be chewed is the best food because it insures complete digestion and develops sound teeth and healthy gums. The longer you chew

Shredded Wheat

the more nutriment you will get out of it and the more delicious it will taste. Contains all the lime-salts for making sound teeth. Sixty-five per cent of all school children have defective teeth—that means low vitality and poorly nourished bodies.

Two Biscuits with milk or cream make a complete nourishing meal. Delicious with peaches, berries, raisins, prunes, sliced bananas and other fruits. TRISCUIT is the Shredded Wheat cracker—a real whole wheat toast—eaten with butter or soft cheese.

Pacific Coast Shredded Wheat Co., Oakland, Cal.



Eat H-O

The World's Finest Oatmeal

It's steam-cooked and pan-toasted. —That's the difference between oatmeal and H-O Oatmeal —and H-O never cooks pasty.

SPATH'S MARKET

PAUL R. SPATH S. W. COR. 4TH AND YAMHILL

Main 804—We Deliver NOTED FOR QUALITY AT ALL TIMES 1922—Spring Lamb—1922

- Breast Veal, lb. 15c
- Veal Roast, lb. 20c
- Sugar Cured Ham, lb. 34c
- Sugar Cured Bacon Side, lb. 25c
- Fancy Lean Bacon, lb. 35c

S. W. COR. 4TH AND YAMHILL Main 804

THE BEST BREAD IN ALL PORTLAND BAR NONE

Ask your Doctor Ask your Dentist Ask your Friends Ask your Mayor Ask your Chief of Police Ask the Health Department

Dick Burns 10c Body Builder Bread

Has No Equal—Good to Taste Good for You—Deliciously Toasted Baked by the Royal DO NOT BUY AN UNWRAPPED LOAF YOU TAKE A CHANCE

- The Following Concerns of Reputation Sell My Bread—DICK:
- C. K. Tichborn, 121 N. 10th.
 - Ward Grocery, 16th and Johnson.
 - Mrs. Boren, 210 N. 18th St.
 - Milbarie Grocery Co., 763 Thurman St.
 - Fisher & Co., 795 Thurman St.
 - Spreitzer & Sons, 24th St.
 - Gumher & Hicker, 23d and Marshall.
 - Nob Hill Dairy Store, 191 N. 23d St.
 - Smith & Co., 156 N. 23d St.
 - Murlock Grocery, 23d and Washington.
 - Fountain Grocery, 706 Washington St.
 - Superior Bakery, 41st and Washington.
 - Orlando Delicatessen, 635 Wash. St.
 - Jensen Grocery, 621 Washington St.
 - Mrs. Penhall, ferry crossing.
 - Gordon Conf., ferry crossing.
 - Jensen & Co., Linton, Or.
 - Joe Lemma, Linton, Or.
 - Salmon St. Grocery, 450 Salmon St.
 - Cerruth Grocery, 4th and Jefferson.
 - Jefferson St. Grocery, 18th and Jefferson.
 - Wagner Grocery, 16th and Jefferson.
 - Lacey, 17th and Market Sts.
 - Liberty Grocery, 328 14th St.
 - Freiburg, 438 Market St.
 - Hartig (Schwarz's Groc.), 430 Harrison.
 - H. Dahl & Son, 405 Jefferson St.
 - Talm Grocery, 415 6th St.
 - Blimberg, 307 College St.
 - Bushberg, 66 and Lincoln Sts.
 - Kolink, 3d and Hall Sts.
 - Ellis, 400 3d St.
 - Bell, 409 1st St.
 - Cranish, 411 1st St.
 - Coplan, 501 1st St.
 - Tarnoff, 124 6th St.
 - Joe Kackles, 190 Gibbs St.
 - Baronichs Bros., 180 Gibbs St.
 - Greedy, 180 Gibbs St.
 - Day Bros., 894 Gladstone.
 - S. P. Grocery, 21st and Powell Sts.
 - Nichol Grocery, 4927 41st S. E.
 - S. M. Schultz, 52d St. and 45th Ave. S. E.
 - L. L. Door & Son, 6th St. and 5th Ave. S. E.
 - Legas, 6303 Powell Valley road.
 - Tronson Grocery, 5907 72d St. S. E.
 - Kimball's Cash Store, 6501 72d St. S. E.
 - Johnson's Grocery, city limits and 32d St.
 - Blackburn, 82d St. and Foster road.
 - Cash & Curry, 8707 Gilbert road.
 - Agnew & Looney, Lewis Junction.
 - Nichol's Bellows station.
 - Cagwell Grocery, Linsen Junction.
 - Mrs. Schanno, Conf., Gresham.
 - Leadford's Grocery, Powell Valley.
 - For Bros., Troutdale, Or.
 - G. Page, Base Line and Patriev.
 - Spore's Rustic Store, Base Line and Fairview.
 - Dre's Grocery, Rockwood.
 - Eckert Grocery, Rockwood.
 - Richett Grocery, Base Line and Barker road.
 - McIntosh Grocery, 82d and Powell Valley road.
 - Tip Top Delicatessen, 13th and Morrison.
 - Finer Bakery, 130 9th St.
 - Century Grocery, 172 5th St.
 - Twentieth Century Groc. Co., 198 5th.
 - L. Mayer & Co., 190 5th St.
 - Twentieth Century Groc. Co., 169 3d.
 - Freeman Bros, 3d and 5th on Yamhill.
 - Shags United, 245 Yamhill St.
 - J. Pope's Store, 2d and Yamhill.
 - Twentieth Century Groc. Co., 166 2d St.
 - Frank's Market, 2d and Yamhill.
 - Sunshine Dairy, 2d and Yamhill.
 - Harding, 5th and Yamhill.
 - Washer Bros, 15th and E. Broadway.
 - Broadway Grocery, 410 E. Broadway.
 - Shaw Grocery, 410 E. Broadway.
 - Hungerford, 241 E. 21st St. N.
 - Kilson, 18th and E. Burnside.
 - Cash Grocery, 477 E. Stark St.
 - Otto Grocery, 78 Halsey St.
 - Toogreen, 285 E. Broadway.
 - Schmid Grocery, 292 Grand Ave.
 - Chalk Grocery, 292 Grand Ave.
 - Ladd's Grocery, 11th and Hawthorne.
 - Mancini & Crucchiola, 891 E. 7th St.
 - Marion Grocery, 7th and Harrison.
 - A. M. Sauter, 421 E. 8th.
 - Montgomery Grocery, 1192 Hawthorne Ave.
 - Schmuckli Grocery, 1020 Hawthorne Ave.
 - Mrs. Kichen, 997 Hawthorne Ave.
 - Head's Grocery, 49th and Hawthorne Ave.
 - Hawthorne Grocery, 37th and Hawthorne.
 - Rayne, 47th and E. Harrison.
 - Punastow Grocery, 41st and E. Hall Sts.
 - Linda Vista Grocery, 635 E. 39th St.
 - McKercher Grocery, 84th and Clinton.
 - Freeman's Grocery, 1039 Hawthorne.
 - Grand Grocery, 80th and E. Bondade.
 - White Front Groc., 375 E. 11th St.
 - Gilbert Grocery, 880 E. 11th St.
 - Boch & Wentz, 11th and Division Sts.
 - U'lar Grocery, 629 Milwaukee.
 - Donner's Grocery, 641 Rhoads St.
 - Wagner, Center and Milwaukee.
 - Alvahan Bros., 280 Milwaukee Ave.
 - Table Grocery, 1200 Milwaukee Ave.
 - Hirsch Grocery, Bertha Station.
 - Nelson Thomas, Multnomah Station.
 - Achut Grocery, Collins View.
 - P. F. Demary, Collins View.
 - Mrs. Lewis, Cor. Russell and Mt. Ave.
 - Peerson Grocery, 809 Montana Ave.
 - Gold Co., 787 Montana Ave.
 - Albina Home Bakery, Beach and Mt. Ave.
 - Crane, Fremont and Mississippi Ave.
 - G. Gunderson, 853 Albina Ave.
 - Cass & Sons, 198 Killingsworth.
 - Scotton Meat Market, Easton.
 - C. Gunderson, 1230 Greeley St.
 - J. L. Scholer, 882 Lombard.
 - Wick, 691 Lombard.
 - Ludwig Market, 302 Lombard.
 - S. P. Grocery, Columbia Blvd. and Fessenden St.
 - L. Simmons & Co., 801 E. Fessenden St.
 - A. M. Shaw, 802 N. Irwinhoe.
 - Johnson, 702 N. Irwinhoe.
 - Chas. Owen, 1250 Lombard.
 - Albina Home Grocery, Portland Heights, 852 Vista Ave.
 - Storchner, Portland Heights.
 - Kelly, Sylvan, Or.
 - McGee, Beaverton, Or.
 - Baker Grocery, Huber, Or.
 - Buck & Son, Albina, Or.
 - Chilner, Hoodville, Or.
 - W. Hazel Grocery, Welch Hazel Sts., Or.
 - Higgs & Jones, Hillsboro, Or.
 - Phelps Grocery, Cornelius, Or.
 - Hipple Grocery, Higgan, Or.
 - Folsand Groc., Tualatin, Or.
 - McDonald's Grocery, Pleasantville, Or.
 - Grange Store, Sherwood, Or.
 - Aden Gen. Mer. Store, Wilsonville, Or.
 - Robinson Confection, Tualatin, Or.
 - McKee Bros., Tualatin, Or.
 - McFarland's Bunsalby Store, Lake Grove Station, Or.
 - Leads Grocery, Bryant Station, Or.
 - Mackie, 781 Williams Ave.
 - Cutter & Son, 1068 Union Ave.
 - Greenfield, 917 Union Ave.
 - Giesmer & Wolfman, 707 Union Ave.
 - Cottrell, 1122 Union Ave.
 - Pidmore Grocery, 1238 Union Ave.
 - G. Wolfstrom, 9th and Roseleva.
 - Greenfield, 1014 8th St.
 - Peersonal Market, 1408 Kaufman Ave.
 - Stoon, 1708 Kaufman.
 - A. J. Collins, 1901 Main St.
 - City Hall Grocery, 24th and Columbia.
 - City Hall Grocery, 273 5th St.

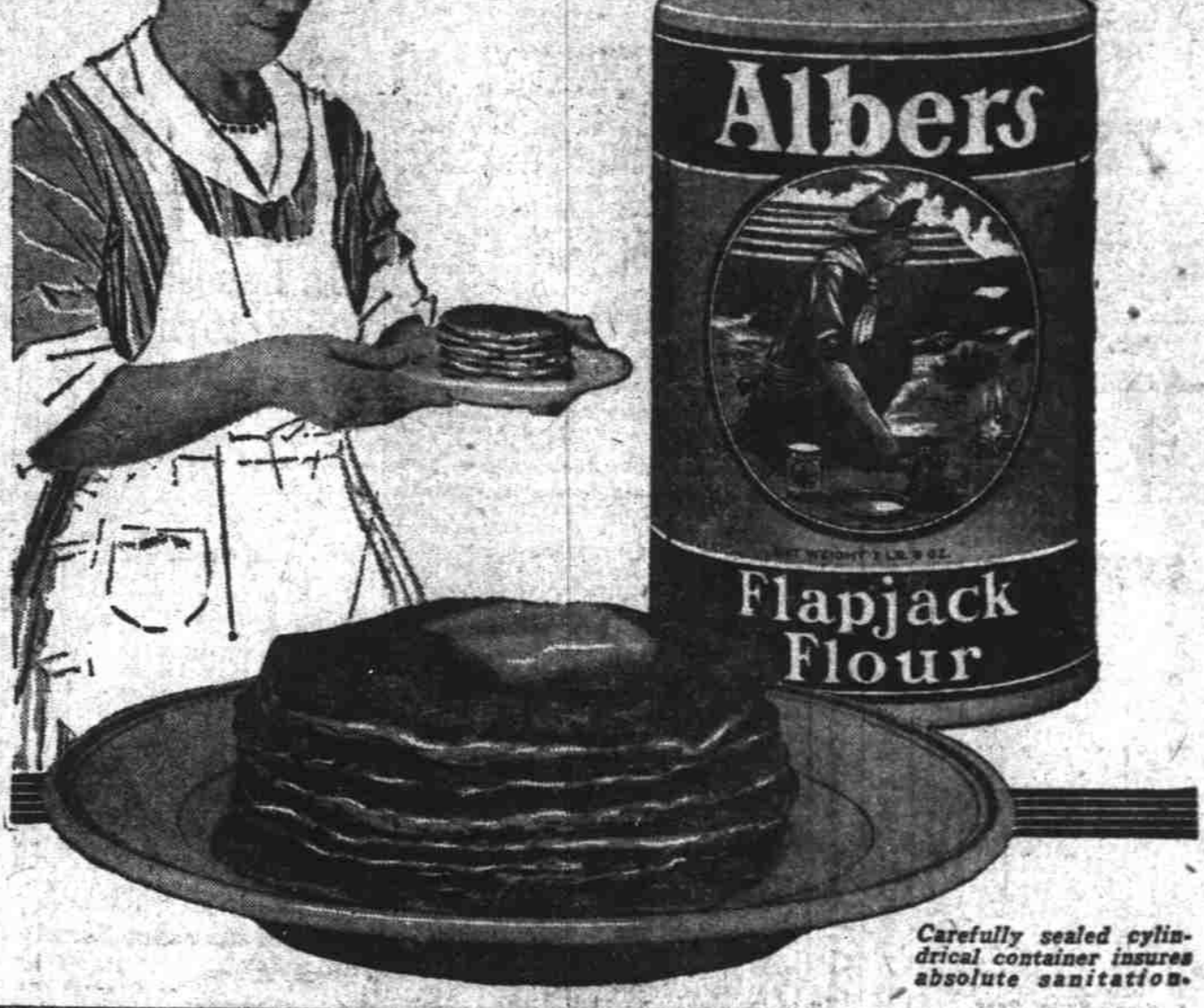
You always have "luck" with Albers

Just follow the simple directions on every package of Albers Flapjack Flour.

In a jiffy the batter is ready for you to bake tender, light cakes—the kind that fairly melt in your mouth!

Albers Flapjack Flour is known for quality. It's the popular hotcake flour of the West.

Your Grocer Recommends Albers Quality

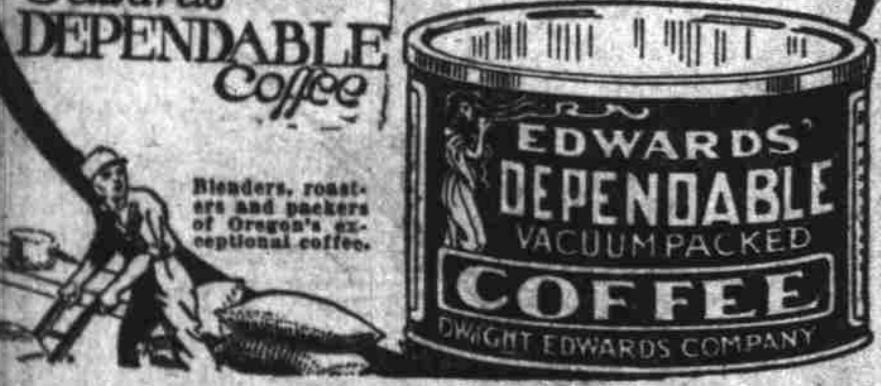


Carefully sealed cylindrical container insures absolute sanitation.

The Careful Hostess

knows the part Dependable Coffee plays in the success of her dinners.

Tastes better—goes further



5c The Best Soap to use for any purpose is



A Snowy Line in Half the Time

5c "PLANTATION" Pure Ribbon Cane Syrup

DIRECT FROM ALABAMA PLANTATION "The Sweetness of the Old South" Your dealer probably has it. If not, call Main 6658 J. E. Lawrence & Co. Portland, Oregon Sole Distributors for Pacific Northwest

10c the pound loaf in the brown bag



ECONOMY is yet another factor in favor of OLYMPIC Rolled Oats —healthful, too

OLYMPIC FLOUR CEREALS FEED

Quality Products SKINNERS Cut Spaghetti ALLEN & LEWIS Exclusive Distributors

10c the pound loaf in the brown bag

Groceries—Special

LARGE STRICTLY FRESH EGGS—MAIN STORE ONLY—LIMIT 3 DOZEN TO A CUSTOMER EGGS, LIMIT 3 DOZEN 65c

- SPECIAL
- Cheese, Mild and Fresh, 2 pounds for. 40c
 - Sugar-Cured Pickles, average 5 pounds, per pound. 12c
 - Potatoes, best quality white, 50-pound sack. 81c
 - Potatoes, best quality white, 25-pound sack. 41c
 - Pepper, per can. 25c
 - Watermelon, large medium, per can. 25c
 - Strawberries, No. 2 tin, thick syrup, 1 can. 25c
 - Eating Apples, per box. 82.00
- Fine Assortment of Dried Fruits

WE DELIVER QUANTITY ORDERS OF 45 AND UPWARDS BY NUMBER OF THE ADDRESSES: MAIN STORE, 192-194 SECOND ST. CORNER TAYLOR; BRANCH, 13 THIRD ST. CORNER YAMHILL

ORIEN VAN SCHOONHOVEN Phone Main 1282

Bluhill Green Chile Cheese tastes like more served with Boston baked beans "Bluhill spreads like butter!"



What the Doctor says about Snow Flakes

Where a light, nourishing diet is indicated the doctor recommends a good soda wafer as a change from heavier wheat foods. These thin, slightly salted wafers nourish without taxing the digestion. Helpful in renewing vitality. Helpful in keeping fit.

Don't ask for crackers, say SNOWFLAKES



Sold in red packages and in bulk Pacific Coast Biscuit Co., Portland, Ore.