

FARMERS' BLOC WARNS IN RESERVE BOARD MEASURE

Washington, Jan. 31.—(WASHINGTON BUREAU OF THE JOURNAL)—Farms by the senate of the bill which adds another member to the federal reserve board after agreement with the president that a farmer shall be appointed is interpreted as another victory for the agricultural bloc, which seems to be getting ahead with its program, despite all opposition.

The president has escaped being "ordered" by congress to put a farmer on the reserve board. He was sensitive on that score, so the bill that was passed does not direct him to pick a farmer. It merely says that the farming interests shall be represented and create a new place on the board so that a farmer can be immediately appointed. The farmer advocates in the senate were ready to accept it in the form of receiving assurances that the president will appoint a sure-enough farmer.

DEPENDS ON CHOICE
It is recognized that the actual benefit of the legislation will depend upon the choice the president makes. In the words of Senator Norris of Nebraska, the president could appoint a farmer who would be the worst enemy the farmers ever had on the board, or he could appoint a lawyer who is in full sympathy with the farmers. The new member of the board, however much he may be for the farmer, will be only one out of eight, so there can be no assurance that any great change will take place.

At the same time, the members of the agricultural bloc feel that some gain has been gained in the mention of agriculture as one of the interests that the president shall keep in mind, and for the rest they rely upon their own vigilance. If the president does not carry out the spirit of the act and appoint a man acceptable to the farming interests they will know exactly who to hold responsible.

EIGHT MEMBERS
Assuming that the bill is enacted as it passed the senate, the reserve board will consist of eight members, including the secretary of the treasury and the controller of the currency, who are members by virtue of the offices they hold. The five members already serving by appointment of the president are Francis B. Rowland of the Atlanta reserve bank district, Platt of the New York district, Miller of the San Francisco district, Hamlin of the Boston district and Mitchell of the Minnesota district.
Since the law provides that no more than one of the appointive members shall be from the same reserve district, the new farmer member cannot come from any of the districts named. There is also a provision for geographical distribution, and it seems likely that the Philadelphia and Cleveland districts will also be passed over because Secretary Mellon and Controller Cripsinger are from those districts.
The new member to assume the seat, will come from the St. Louis, Kansas City, Chicago, Richmond or Dallas districts.

Three, Accused of Burglary Attempt, Held for Hearing

Tony Dagonino, Henry Bryant and Al Stefans, charged with attempting burglary at the home of Paul C. Murphy, East Burnside street and Laurelhurst avenue, January 24, were bound over to the grand jury Monday afternoon by Municipal Judge Rossmann, who had fixed at \$2500, \$750 and \$1000, respectively.

The provokers were surprised at the Murphy home by Special Policeman Corcoran, but they escaped after a gun battle. An automobile parked near the scene led to the arrest of young Bryant, whose father owned the machine. He was found in bed, with muddy clothes near at hand. At the time Bryant could not account for the presence of the automobile in the neighborhood.
Suspect in Bryant's arrest, Stefans and Dagonino were taken by police. All three denied the charges.

D. R. Armstrong Is Held Over; Larceny By Bailee Charged

D. R. Armstrong, arrested by police at Montecarlo, Wash., on a charge of issuing bad checks and larceny by bailee, viewed a preliminary hearing before Municipal Judge Rossmann Monday afternoon and was bound over to the grand jury with bail fixed at \$1000. Armstrong, according to charges, passed a worthless check at the M. Glickman clothing store, 348 Alder street, for \$45. Then he is alleged to have purchased an \$800 automobile for \$100 down with a worthless check. He obtained a license for \$40 and passed a bad check for a \$20 gasoline book, police say.

Man Who Terrorized Vassar Girls Sought

Poughkeepsie, N. Y., Jan. 31.—(U. P.) A prowler who has attacked four Vassar girls within the past two days terrorized the college campus today. Following an attack by the marauder upon an instructor last night, police organized a posse to hunt down the man, while college authorities are taking steps to protect the girls.

"WASHED" WRONG WOMAN

Salem, Jan. 31.—Fred Manfredini, local roofing worker, lusted Mrs. Elsie Eisman, police matron, on a Salem street corner Sunday night, suggesting a "date." Mrs. Eisman proposed that Manfredini be at a certain corner in 30 minutes. He was. So was a member of the Salem police force. Manfredini must explain his actions to the judge.

MRS. LIZZIE TEMPLETON

Wallawa, Or., Jan. 31.—Mrs. Lizzie Templeton, 71, died Thursday and funeral services were held Saturday. She had lived in Wallawa 25 years and leaves three sons and a step-son. Three sleigh loads of Rebekah, about 30 in all, accompanied the body on the 10-mile drive, with the relatives and friends, and held Rebekah services at the grave in Lostine cemetery.

Wilson's Friends Coming to Bat Foundation Subscribers Gaining

A lengthening list of Woodrow Wilson Foundation subscriptions testifies to increasing Oregon interest in the plan to use the income of a \$1,000,000 fund to reward distinctive contribution to peace, democracy and human welfare.
Though Oregon's modest \$10,000 quota is still far from being reached, campaign leaders are encouraged. After a week's work, Elton Watkins, chairman of the Multnomah County Woodrow Wilson Foundation committee, reappeared briefly Monday and said he would prepare to give the greater part of his time to the campaign.
Contributors to the fund reported today include: R. P. Farrell, M. T. Brandt, A. J. Butler, Fannie Parkhurst, Mrs. Mary Widmer, Mrs. Anna Chick, Vivivi Woods, Dorothy Raymond, Al Franks, J. H. Bradley, Marguerite N. Smythe, Mildred Cassidy, Jo Bergeron, Grace Pringle, Jan and Margaret Buck, Eva Dada, Polly Wilson, Bobbie West, Babe Camack, Betty McBeth, Fred Umark, Clare Heath, Frances Reilrod, Mary Waldron of Portland; J. G. Street, W. J. Todd, Thomas Boyle, D. M. Roberts, G. W. Monacott of Gresham; Frank Fleming, Mrs. Frank Fleming, Mrs. C. F. Condon, Mrs. D. L. Cates of The Dalles; J. J. Martin, Oak Grove; J. C. Madden of Redmond; S. S. Williams and Mrs. Williams of Drewsey; Alton Aden of Sherwood; Mrs. J. F. Knepper of Henooc Beach, Cal.; Mrs. Nancy M. Craig of Bandon; William Roberts, Miss Emily Kaiser, F. F. Whittle, W. H. Mc-Nair, E. E. Phipps, F. H. Fuller, W. J. Moore, E. J. Farlow, Mrs. E. J. Farlow, Jennie L. Hogue, Helen Pygall, George Irwin, Jennie Irwin, Dobbie Irwin, C. J. Sanford and R. P. Nell of Ashland.

WOODROW WILSON FOUNDATION, Lumbermen Trust Company Bank, Portland, Oregon.

Gentlemen—Inclosed find \$..... for Woodrow Wilson Foundation fund. Please send certificate of membership to the undersigned at the following address.

Name
Address
City State
Make checks to Woodrow Wilson Foundation, Lumbermen Trust Company bank, Broadway and Oak streets, Portland, Oregon.

Danger in Sweeping Rates Reductions Is Seen by W. D. Hines

Washington, Jan. 31.—(I. N. S.)—"Irreparable injury" to the transportation system of the country might result if sweeping rate reductions demanded by shippers were granted, Walker D. Hines, former director general of the railroad administration, told the interstate commerce commission.
"The commission should approach the problem of reducing rates with extreme caution," Hines said. "Otherwise irreparable injury might be done, while the public itself would suffer instead of benefit."

VANCOUVER MARRIAGE LICENSES

Vancouver, Wash., Jan. 31.—The following marriage licenses were issued Monday: Romy J. Cotler, 31, and Elaine Marston, 23, Portland; Otto W. Birt, 23, and Mary A. Fraley, 18, Woodland, Wash.; William E. Laiser, 22, and Berencie O'Neil, 21, Portland; Charles E. Worden, legal, and Elizabeth M. Frick, legal, Portland; William Moore, 29, and Thelma McMahan, 19, Portland; Abraham Slutsker, 32, and Inez Slutsker, 22, Portland; Nick Antila, 22, and Lily Brickson, 21, Portland; Lee M. Bloom, 26, and Elizabeth Taylor, 22, Portland.

CO-EDS TO TRY MILKING

Oregon Agricultural College, Corvallis, Jan. 31.—A milking contest by co-eds of the college will be a feature of the agricultural fair Friday and a new type of electrical milking machine will be demonstrated by a dairy student.

ATTENDANCE IS UNCHANGED

Albany, Or., Jan. 31.—Albany's public schools opened the second semester Monday. While no accurate estimate of the registration was available last Monday, new pupils virtually balanced the number leaving.

TWO DIVORCE SUITS FILED

Kalama, Wash., Jan. 31.—Marriages and divorces have rapidly fallen off here of late. Two divorces Monday being the first for January. Ida M. Jewett is asking for a divorce from Charles Jewett on the grounds of non-support, and G. W. Helm is asking a divorce from Hattie Helm, charging desertion. The Helms were married at Kalama in 1911.

The one absolutely safe place for your valuable papers and other articles—great in worth, or irreplaceable in character—is a safe deposit box.
The Ladd & Tilton Safe Deposit Vaults offer you the utmost in safety for your valuables at a very insignificant cost. Equipped with the newest of modern devices for safety, this vault is absolutely fire and burglar-proof. Nothing can happen to cause you loss.

Safe Deposit Boxes \$3 Per Year and Up
Safe Deposit Department Open 8:30 to 5;
Saturdays, 8:30 to 2

LADD & TILTON BANK

Oldest in the Northwest
WASHINGTON AT THIRD



RILEY'S LECTURE ON OREGON TO BE ST. LOUIS MAGNET

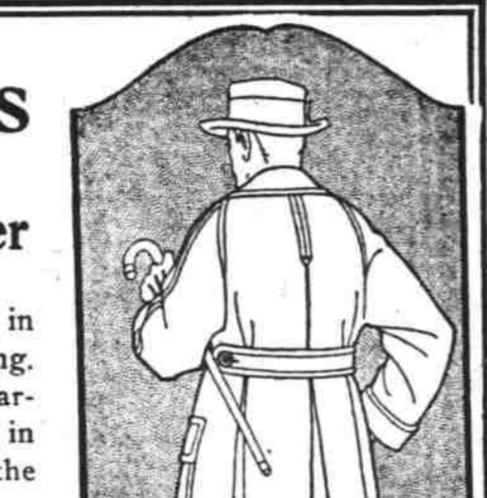
St. Louis, Jan. 31.—From the gates of this city nearly 120 years ago Lewis & Clark began their first overland journey to the Columbia river and the Pacific ocean. Today a citizen from that far-away and then unknown, country came back to describe its industrial assets and scenic splendors.
The St. Louis Chamber of Commerce and the Real Estate Exchange have sent announcements to 5000 business and professional men inviting them to attend an illustrated lecture on the Oregon county by Frank Branch Riley of Portland, under the joint auspices of the two organizations. Riley will also appear today before local engineering societies and the Electrical Board of Trade. On Thursday noon he will speak before an audience of several hundred brought together by the City club and Thursday evening under the auspices of the St. Louis Rotary club.
Riley reports that what was once looked upon as trackless wilderness is being banded with paved highways that \$42,000,000 has already been spent in state highway construction in Oregon and \$20,000,000 in Washington; that the forests of the Northwest in which only obscure Indian and game trails once were to be found, contain more than 700,000,000 feet of standing timber and that snow-capped mountains, great rivers and waterfalls such as poets sing about and artists strive in vain to reproduce are but part of the great possession Lewis & Clark secured to the United States by their expedition.

Police of Roseburg To Have New Chief

Roseburg, Jan. 1.—L. L. Mathews Monday was appointed chief of police to succeed D. R. Shambrook, who recently resigned. The appointment is tentative until it is passed upon by the city council. Mathews has been connected with an auto stage business here.

Boiler Explosion In Camp Hurts Two

Kalama, Wash., Jan. 31.—The boiler of a donkey engine exploded at the Mountain Timber company camp, in the foothills west of Kalama, Monday, blowing H. Edwards several feet in the air, breaking his arm and burning him severely. Albert Kerr was scratched and scalded. They were taken to a Portland hospital.



Top Coats Featuring the New Norman Shoulder

are a distinct innovation in up-to-the-minute tailoring. They are designed particularly for the man who is quiet in his tastes, yet demands the latest in cut and finish.

The Norman Shoulder is exclusive with this establishment. The sleeve is perfectly hung and the collar cut in one piece with the coat, making it as attractive turned up as in the regular position.

Drop In Today and
See This New Model

Sketched
From
Life

NORMAN BROS.

Tailors to Men and Women
101-106 Mezzanine Floor Northwestern Bank Bldg.

Furs Repaired,
Reined and
Remodeled by
Expert Furriers

Lipman Wolfe & Co.

"Merchandise of Merit Only"

New 1922 Spring
Line of "Pacific"
Package Goods
Now Here

A Sale of the "Boyshform" Brassieres —Embracing a Shipment Direct from the Factory —Emphatically is This Event Given Distinction by the Quality for Which the Celebrated Name "Boyshform" Stands

- Lot 1—"Boyshform" Brassieres, Special \$.95
- Lot 2—"Boyshform" Brassieres, Special \$1.18
- Lot 3—"Boyshform" Brassieres, Special \$1.95
- Lot 4—"Boyshform" Brassieres, Special \$2.95

—"Boyshform" Brassieres are the brassieres that have so many exclusive features of merit. These celebrated brassieres are made in one style only, thereby enabling the manufacturer, through highly skilled specialization, to offer excellent values at the regular prices. Therefore, all the more importance is to be attached to this selling in which extra special pricing prevails.



- At 95c are "Boyshform" brassieres of pink basket weave madras—all with strong tape shoulder straps.
- At \$1.18 are "Boyshform" brassieres made of heavy pink striped coutil; with tape over the shoulders.
- At \$1.95 are "Boyshform" brassieres made of pink jacquard, mercerized madras and with jacquard ribbon over the shoulder. Others of mercerized striped coutil with lace over the shoulder. All with val lace at the top.
- At \$2.95 are "Boyshform" brassieres made of Skinner's satin in pink, white and navy blue—all are beautifully trimmed with val laces at the top.

Corset Section—On the Fourth Floor—At Lipman, Wolfe's.

"The International Wash Goods Sale" Has Portland Ever Before Witnessed Such an Event?

- 31-Inch English Ginghams 48c Yard
—Dress ginghams from the famous Manchester mills—a guarantee of quality always. Checked patterns in attractive colors.
- 4000 Yards Jap Crepe at 39c Yard
—Splendid crepe for house dresses, street dresses, children's dresses and smocks. About fifty shades in solid colors. Very specially priced at 39c a yard.
- 45-Inch Swiss Organdy 79c Yard
—Beautifully finished materials in thirty different shades. Wonderful organdy, dainty and crisp. Extra special at 79c a yard.

- 38-Inch Normandy Swiss Voile 68c Yard
—The raised dot effect that has proved so popular is featured in this material. Dots in contrasting shades—and they will not fall out.
- 30-Inch Batistes, Special 25c Yard
—A showing that includes more than 40 different colors and patterns. These batistes are 30 inches wide and are very specially priced at 25c a yard.

- 32-Inch Dress Ginghams 30c Yard
—30c a yard is an extraordinary price for these standard ginghams. Many beautiful colors in desirable checked and plaid patterns.
- 32-Inch Tissue Ginghams 68c Yard
—Very specially priced are these tissue ginghams in desirable plaid and checked patterns.

Wash Fabric Section—On the Second Floor—At Lipman, Wolfe's.

Continuing the Remarkable Glove Sale —and Featuring Several Hundred Pairs of Women's Imported Lambskin Gloves \$1.59 Pr.

—They're fine gloves, indeed, of a quality we're proud to sell, and are in P. K. and overseas styles. With Paris point and embroidered backs—choice of black, white, mode, beaver and brown.
Some of the Other Glove Specials
Imported Glaced Kid Gloves, Special at \$1.95 Pr.
Women's Capeskin Gloves, Special at \$2.95 a Pair
Women's Mocha Gloves, Special at \$3.50 a Pair
Women's Chamoisette Gloves, Special at 69c Pair
Duplex Chamoisette Gloves, Special at \$1.29 Pair
Glove Section—On the First Floor—At Lipman, Wolfe's.



New Hats, Model Hats, in a Sale At \$12.50

—New hats distinguished by their clever shapes and ultra-desirable colors—some of the most brilliant styles the new season likely will bring forth are in this collection.
—All of these hats are from one of the foremost manufacturers in America. So well known is this maker, so famous are his millinery creations, regularly priced so much more, we had to agree to remove from them the maker's labels in order to price them as low as \$12.50.

Women's Cotton Vests Specially Priced 39c

—600 of these vests, and every one of them absolutely perfect—every one a value extraordinary. They're Swiss ribbed vests in pink and white—regular and bodice top style; trimmed with French band and beading. All are in full size and have elastic bodies—sizes 36 to 44. At 39c.

- Lisle Vests at 50c
—These are in regular and bodice top style; in white and pink; with elastic bodies. Extra sizes at 60c.
- Cotton Bloomers 69c
—Women's bloomers with elastic at the waist and knee; made with gusset. Choice of pink and white. Sizes 36 to 44.

Knit Underwear Section—On the Street Floor.

THIS STORE USES NO COMPARATIVE PRICES—THEY ARE MISLEADING AND OFTEN UNTRUE