

SHIFTING BOARD CHANGE WILL ADD TO RUNNING COST

N. Y. Underwriters and British Board of Trade Issues New Orders Affecting Wheat Cargoes.

Captain Andrew Hoben, representing the British board of trade and the New York board of underwriters, has issued formal notice to liners that hereafter shifting boards will run 2 feet, or three feet, high in wheat. This order does not pertain to lining for vessels taking bulk cargo.

The new order on shifting boards will mean additional expense to the operator, in overhead and loss of time.

Heretofore grain vessels have been lined (Pacific side) for Europe or the Orient, according to Pacific classification. Shifting boards were raised according to the ship and left largely to the discretion of the surveyor. New rules make a standard for all craft, barring ships taking bulk cargo.

With the Irish peace settlement taking definite form, Queenstown will again assume the high place it used to hold in shipping circles in prewar days, when it was the starting point for record breaking trips across the Atlantic.

Sweden Maru Delayed Astoria, Dec. 24.—The Japanese steamer Sweden Maru got far out of her course while working at the Hammond mill this morning and struck shallow water. The tide was falling and she will be delayed until some time tomorrow. She is stuck but lightly and will suffer no injury.

News of the Port Arrivals December 24 Edward Luckenbach, American steamer, from Philadelphia and way ports, general, from Seattle, 10:30 a. m. ...

AT WORLD'S PORTS Astoria, Dec. 24.—Arrived at 2:40 and left up at 4 a. m. Steamer Edward Luckenbach, from Philadelphia and way ports, general, from Seattle, 10:30 a. m. ...

AT WORLD'S PORTS Astoria, Dec. 24.—Arrived at 2:40 and left up at 4 a. m. Steamer Edward Luckenbach, from Philadelphia and way ports, general, from Seattle, 10:30 a. m. ...

AT WORLD'S PORTS Astoria, Dec. 24.—Arrived at 2:40 and left up at 4 a. m. Steamer Edward Luckenbach, from Philadelphia and way ports, general, from Seattle, 10:30 a. m. ...

AT WORLD'S PORTS Astoria, Dec. 24.—Arrived at 2:40 and left up at 4 a. m. Steamer Edward Luckenbach, from Philadelphia and way ports, general, from Seattle, 10:30 a. m. ...

AT WORLD'S PORTS Astoria, Dec. 24.—Arrived at 2:40 and left up at 4 a. m. Steamer Edward Luckenbach, from Philadelphia and way ports, general, from Seattle, 10:30 a. m. ...

AT WORLD'S PORTS Astoria, Dec. 24.—Arrived at 2:40 and left up at 4 a. m. Steamer Edward Luckenbach, from Philadelphia and way ports, general, from Seattle, 10:30 a. m. ...

AT WORLD'S PORTS Astoria, Dec. 24.—Arrived at 2:40 and left up at 4 a. m. Steamer Edward Luckenbach, from Philadelphia and way ports, general, from Seattle, 10:30 a. m. ...

AT WORLD'S PORTS Astoria, Dec. 24.—Arrived at 2:40 and left up at 4 a. m. Steamer Edward Luckenbach, from Philadelphia and way ports, general, from Seattle, 10:30 a. m. ...

AT WORLD'S PORTS Astoria, Dec. 24.—Arrived at 2:40 and left up at 4 a. m. Steamer Edward Luckenbach, from Philadelphia and way ports, general, from Seattle, 10:30 a. m. ...

AT WORLD'S PORTS Astoria, Dec. 24.—Arrived at 2:40 and left up at 4 a. m. Steamer Edward Luckenbach, from Philadelphia and way ports, general, from Seattle, 10:30 a. m. ...

AT WORLD'S PORTS Astoria, Dec. 24.—Arrived at 2:40 and left up at 4 a. m. Steamer Edward Luckenbach, from Philadelphia and way ports, general, from Seattle, 10:30 a. m. ...

AT WORLD'S PORTS Astoria, Dec. 24.—Arrived at 2:40 and left up at 4 a. m. Steamer Edward Luckenbach, from Philadelphia and way ports, general, from Seattle, 10:30 a. m. ...

AT WORLD'S PORTS Astoria, Dec. 24.—Arrived at 2:40 and left up at 4 a. m. Steamer Edward Luckenbach, from Philadelphia and way ports, general, from Seattle, 10:30 a. m. ...

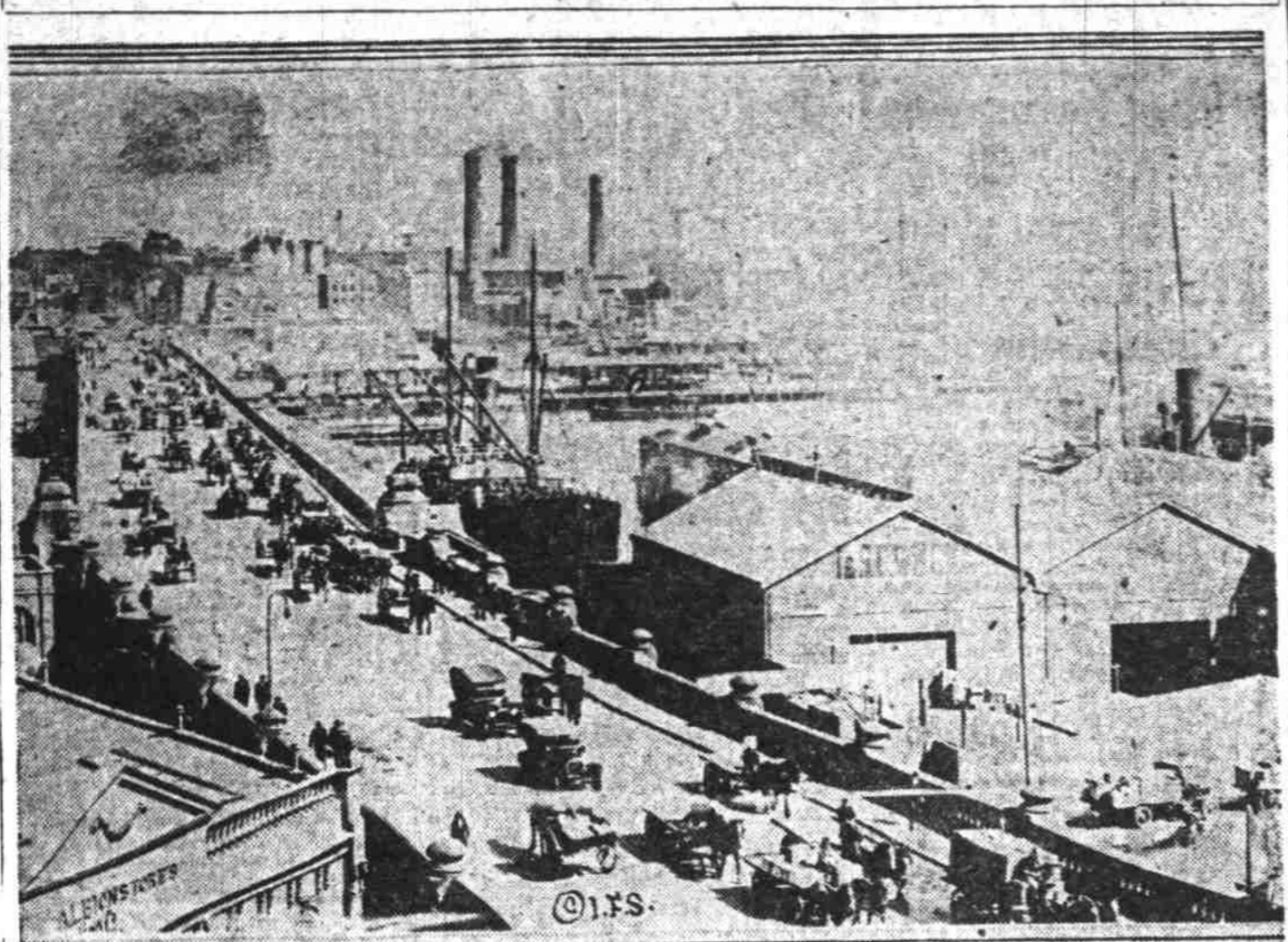
AT WORLD'S PORTS Astoria, Dec. 24.—Arrived at 2:40 and left up at 4 a. m. Steamer Edward Luckenbach, from Philadelphia and way ports, general, from Seattle, 10:30 a. m. ...

AT WORLD'S PORTS Astoria, Dec. 24.—Arrived at 2:40 and left up at 4 a. m. Steamer Edward Luckenbach, from Philadelphia and way ports, general, from Seattle, 10:30 a. m. ...

AT WORLD'S PORTS Astoria, Dec. 24.—Arrived at 2:40 and left up at 4 a. m. Steamer Edward Luckenbach, from Philadelphia and way ports, general, from Seattle, 10:30 a. m. ...

AT WORLD'S PORTS Astoria, Dec. 24.—Arrived at 2:40 and left up at 4 a. m. Steamer Edward Luckenbach, from Philadelphia and way ports, general, from Seattle, 10:30 a. m. ...

PIER AT SYDNEY WHERE EXPORT GRAIN IS LOADED



From this point Australia's huge wheat crop is shipped to all parts of the world. Business is now said to be booming in New South Wales and this picture shows the center of its activity, in Sydney. The bridge spans part of the harbor dividing the city from the Darling harbor or wheat shipping center. It is also the coaling center of all vessels visiting Sydney.

Tides at Astoria Monday

10:26 a. m., 9.6 ft. 4:56 a. m., 3.2 ft. 11:51 p. m., 7.5 ft. 1:46 p. m., 0.1 ft. Seaside—High water, 9 minutes

San Diego, Dec. 23.—Arrived—Forest King, from Seattle, 1 p. m. San Pedro, Dec. 23.—Arrived—Phyllis, from Tacoma, Sailed—Alaskan, for Seattle. Point Reyes, Dec. 23.—Passed—San Diego, from Tacoma, for San Diego, 10:30 a. m. ...

Seattle, Dec. 23.—Arrived—Yosemite, from Portland, 8 a. m. Bismarck, Dec. 23.—Arrived—Fred Barter, from Seattle, 6 a. m. ...

Seattle, Dec. 23.—Arrived—Northwestern, from Seattle, 5:40 p. m. Vessels to Arrive From—Due Crater Hall, Seattle, Jan. 25 ...

Vessels to Depart From—Due Sweden Maru, Orient, Dec. 25 ...

Notice to Mariners The following affects the aids to navigation in the Seventeenth lighthouse district: Oregon (Tillamook) buoy moved ...

Boynton Furnaces Our Special System of BOYNTON PIPELESS FURNACES IS A SUCCESS LET US INSTALL YOURS J. C. BAYER FURNACE CO. PHONE 619 204 MARKET ST.

Make the Old Room New With PERFECTION Plaster Wall Board The Original Plaster Wall Board for Walls and Ceilings Fire retardant; strong; easy to apply. Can be painted, tinted or papered. PLAIN OR paneled WALLS TIMMS, CRESS & CO. Sole Distributors 184 Second Street

Mrs. Bogart, First White Girl Born in Lane County, Dies

The first white female child born in Lane county, Mrs. Mary Elizabeth Bogart, died last Sunday at her home near Coburg, aged 72. She was born on the farm where she passed away.

City and Mrs. Lela M. Spencer of Coburg, and three granddaughters, Emory Cole, Roseburg; Mrs. Oliver Dorsey, and Adrian Wilkinson of Junction City, survive.

5 Years in Prison Is Sentence Given Reckless Motorist

Knoxville, Tenn., Dec. 24.—(L. N. S.)—George Shorter was convicted in criminal court here today of reckless driving of an automobile and sentenced to serve five years in the state penitentiary.

New Sichel Store To Open on Jan. 10

Alterations are nearing completion on the store building at the southwest corner of West Park and Washington streets recently leased by, and H. H. Sichel as a new home for their clothing and furnishing business.

County Budget Cut; Officials Get Raise

Roseburg, Dec. 24.—A total of \$11,256 has been slashed by the county court and the Taxpayers' league from the 1922 budget, effective the first of the year.

Mount Rainier to Be Mazamas' Goal In Annual Sports

Mount Rainier will be the goal of a party of Portland Mazamas who will leave this week to join the Mountaineers on their annual New Year's snow sports trip.

2 Are Arrested at Astoria for Unusual Breach of Mann Act

Portland department of justice agents have made an arrest at Astoria in what is believed to have been one of the first commercial white slave cases handled in Oregon for years.

Oregon's 1921 Farm Yield Lower Prices Offset Volume

Table showing Oregon Grain Yield with columns for Volume and Value. Wheat, bushels: 28,000,000 volume, \$27,120,000 value. Oats, bushels: 9,000,000 volume, 4,600,000 value. Barley, bushels: 3,000,000 volume, 2,250,000 value. Corn, bushels: 3,100,000 volume, 1,550,000 value. Hay, tons: 4,600,000 volume, 59,800,000 value. Rye, bushels: 1,500,000 volume, 1,450,000 value. Other grains: 1,000,000 volume, 1,000,000 value.

Summary of Total Value Grain 1921: \$97,770,000. Total value grain 1920: 125,971,750. Total value grain 1919: 105,510,000. Total value grain 1918: 75,050,000. Total value grain 1917: 71,855,000.

Oregon Dairy Production table with columns for Volume and Value. Butter, pounds: 18,300,000 volume, \$6,954,000 value. Cheese, pounds: 20,000,000 volume, 5,000,000 value. Milk and cream, gallons: 40,000,000 volume, 10,000,000 value.

Oregon Livestock Output table with columns for Volume and Value. Cattle, head: 230,000 volume, \$16,100,000 value. Dairy cows, head: 100,000 volume, 10,000,000 value. Hogs, head: 800,000 volume, 7,200,000 value.

Oregon Fruit Production table with columns for Volume and Value. Apples, boxes: 6,000,000 volume, \$8,748,000 value. Peaches, boxes: 1,000,000 volume, 1,000,000 value. Apricots, crates: 2,900,000 volume, 3,190,000 value.

Oregon Vegetable Output table with columns for Volume and Value. Potatoes, bushels: 15,000,000 volume, \$14,000,000 value. Onions, cwt: 250,000 volume, 1,000,000 value. Cabbage, pounds: 38,000,000 volume, 390,000 value.

Oregon Mixed Products table with columns for Volume and Value. Poultry, head: 16,000,000 volume, \$17,000,000 value. Eggs, dozen: 72,000,000 volume, 21,600,000 value. Hops, bales: 36,000 volume, 1,440,000 value.

Grand total value Oregon farm products 1921: \$296,805,000. Grand total value Oregon farm products 1920: 428,315,750. Grand total value Oregon farm products 1919: 437,411,900.

Grand total value Oregon farm products 1918: 363,882,000. Grand total value Oregon farm products 1917: 322,063,000. Grand total value Oregon farm products 1916: 325,865,000. Grand total value Oregon farm products 1915: 300,934,000. Grand total value Oregon farm products 1914: 256,255,000.

Grand total value Oregon farm products 1921: \$296,805,000. Grand total value Oregon farm products 1920: 428,315,750. Grand total value Oregon farm products 1919: 437,411,900.

Grand total value Oregon farm products 1918: 363,882,000. Grand total value Oregon farm products 1917: 322,063,000. Grand total value Oregon farm products 1916: 325,865,000. Grand total value Oregon farm products 1915: 300,934,000. Grand total value Oregon farm products 1914: 256,255,000.

Corvallis, Dec. 24.—The city council has gone on record favoring the 1922 exposition and submitting the matter of raising funds to the voters for final settlement.

Corvallis, Dec. 24.—The city council has gone on record favoring the 1922 exposition and submitting the matter of raising funds to the voters for final settlement.

Corvallis, Dec. 24.—The city council has gone on record favoring the 1922 exposition and submitting the matter of raising funds to the voters for final settlement.

Corvallis, Dec. 24.—The city council has gone on record favoring the 1922 exposition and submitting the matter of raising funds to the voters for final settlement.

Corvallis, Dec. 24.—The city council has gone on record favoring the 1922 exposition and submitting the matter of raising funds to the voters for final settlement.

BANNER YIELDS OF STAPLE CROPS SET NEW HIGH RECORD

Oregon Farms Produce 28 Million Bushels of Wheat During 1921, Its Orchards Grew More Apples

Oregon's farm production showed a greater total volume in 1921 than during any previous year. Only this fact saved the total value of the crops from showing a more severe loss as a result of the intensified liquidation all through farm product prices.

The biggest wheat crop by far was grown in Oregon during the year, with a total output of 28,000,000 bushels. This is at least 3,000,000 bushels more than the wheat fields of the state have ever before produced.

A very good oats crop, one that will be spoken of for some years to come, was grown during the year, despite the smaller area planted. Acreage considered, it was the heaviest oats crop Oregon has ever grown.

The hay crop so far eclipsed all other hay crops grown in Oregon that the 1921 production will go down into history as practically a 100 per cent crop, a condition that is sometimes shown on paper but never before actually realized.

Notwithstanding more or less talk of the decreasing dairy industry of Oregon and the Pacific Northwest generally, there was a greater output of dairy products in the state this season than ever before known. Cheese and butter production were especially liberal.

Sheep showed a greater total holding in Oregon during 1921 than a year ago. This is the only livestock line where such a showing is indicated. Revival of the sheep industry comes as a result of the somewhat better feeling in the wool trade.

Oregon actually grew more apples in 1921 than during any other year. Despite the severe damage to the orchards last season, the production was sensationally high per tree. A total of 6,000,000 boxes was gathered in the state this season, or over 1,000,000 boxes more than a year ago.

Pears also showed a very heavy production in the state for the year and small fruits in general showed an increased production. Potato production of the state was fractionally smaller than a year ago, but a greater per cent of the crop was marketed because of the severe loss after digging time a year ago.

More onions per acre, but it had a greater area planted than normal. Transportation Are You Going to Europe? Or the Orient? Or Around the World?

OCEAN SERVICE TO California SAN FRANCISCO & PORTLAND STEAMSHIP COMPANY For San Francisco From Portland Astoria 10:30 a. m. Steamer "Rose City" Tuesday, 10 A. M., Dec. 27 Thursday, 10 A. M., Jan. 5 and every eighth day thereafter

THE ADMIRAL LINE PACIFIC STEAMSHIP CO Passenger and Freight Service to California Through Sailings to San Francisco, Los Angeles and San Diego. Leave Portland Dec. 24, 4 p. m. SS. Senator - Dec. 31 SS. Admiral Evans - Jan. 7 SS. Senator - Jan. 14 And every Saturday thereafter

INTERCOASTAL FREIGHT SERVICE (Regular service between Portland, Maine; Philadelphia, Boston, New York and Los Angeles, San Francisco, Portland, Oregon; Seattle and Vancouver, B. C. (via the Panama Canal); North Atlantic & Western S. E. Co.'s 6500-ton steel vessels) EASTBOUND From Portland Jan. 14 COLD HARBOR Dec. 29 Jan. 1 Jan. 8 WESTBOUND From Portland, Me. Boston Phila. N. Y. Dec. 29 Jan. 5 Jan. 12 COLD HARBOR Feb. 11 ARTIGAS Jan. 25 Feb. 1 Feb. 8 For further information apply to THE ADMIRAL LINE, Pacific Coast Agents 101 Third Street Phone Main 8881

OREGON-PACIFIC COMPANY AGENTS FOR TOYO KISEN KAISHA AND JOINT SERVICE OF HOLLAND-AMERICA LINE AND ROYAL MAIL STEAM PACKET COMPANY Sailings for Japan, China and West Coast South America. GENERAL FREIGHT AND PASSENGER OFFICE 203 Wilcox Bldg. Main 4565 Portland, Ore.