

TOWN TOPICS

COMING EVENTS
Oregon Sunday School Association annual convention, Salem, November 18 to 21.

WEATHER FORECAST
Oregon Tuesday rain, Wednesday rain, south to east wind.

WEATHER CONDITIONS
A low pressure area of considerable importance is apparently centered off the Washington coast.

Table with columns: STATIONS, Temp, Wind, Clouds, Precipitation. Lists various locations like Baker, Oreg., Boise, Idaho, etc.

Highway Bridge Contract Let—A contract has been let to build a bridge across the Klaskanin river at the mouth of Surveyors creek on the new Yakima-Columbia highway.

State Offered Park Site—Mark A. Mayer, Mosier orchardist, has offered to the state highway commission a park site just above the Rowena Loop.

College Gets Whitman Relic—Harvey Yanssey, a prominent Walla Walla rancher, has presented Whitman College museum with a little slate pencil.

on the heavy cuts and fills that will characterize this stretch of new road, which will eliminate the old Booth hill grade, a terror to travelers between the upper and lower valleys.

Pacific Alumni Favored—The alumni of Pacific university are to have a voice in the government of the school in the future.

Portland-Newberg Bus—Leave Fourth and Alder daily, 8:30, 11 a. m. and 1:30, 4:15, 6:30, 8:30 p. m.; Saturday and Sunday 11:15 p. m. Phone Main 3114.—Adv.

Young Trainee Matron Dead—Mrs. Leslie Gillett of Tunatin, aged 16, formerly Mildred Harmon, is dead at St. Vincent's hospital in this city.

Thieves Take Furniture—Walter M. and Mrs. Charles Nelson were away from their home near Beaverton, three came to their house with a large wagon and stole the furniture.

Clemency Request Continues—Many letters continue to arrive at the executive offices in Salem asking that Governor Olcott commute to life imprisonment the death sentence imposed in the cases of James Owens and John Rathie.

Portland Salesman Hurt—Gus Feldman, salesman for a Portland soap company, sustained serious cuts about the head one day last week when his automobile skidded over an embankment on the Columbia river highway near Hood River.

Harrisburg Asks Government Aid—Appeal is to be made for government aid in protecting the bank of the Willamette river which constitutes the heart of the city of Harrisburg.

Shepard's Auto Bus Lines—Portland-Astoria-Seaside division—Leave Portland 7:30 a. m., 10:00 a. m., 1:00 p. m., 4:15 p. m., 7:30 a. m., 10:00 a. m., 1:30 p. m., 2:45 p. m. and 6:15 p. m.

Lea May Remains With Board—A. H. Lea, secretary of the state fair board, will continue to remain on the board and manage the 1922 fair.

Work Rushed on Loop—Contractors engaged in grading the five-mile Booth hill unit of the valley trunk of the Mount Hood loop highway in Hood River county are making a good showing.

Shepard's Auto Bus Lines—Portland-Hood River division—Leave Portland 9:30 a. m., 11 a. m., 2:45 p. m. and 4:30 p. m. daily.

Work Rushed on Loop—Contractors engaged in grading the five-mile Booth hill unit of the valley trunk of the Mount Hood loop highway in Hood River county are making a good showing.

It is said, he has agreed to withdraw his resignation in event his services are needed.

Portland-Near Honored—G. W. Weatherford of Portland was elected vice president of the Pacific Ice Cream Manufacturers' association.

Portland-Newberg Bus—Leave Fourth and Alder daily, 8:30, 11 a. m. and 1:30, 4:15, 6:30, 8:30 p. m.; Saturday and Sunday 11:15 p. m. Phone Main 3114.—Adv.

Young Trainee Matron Dead—Mrs. Leslie Gillett of Tunatin, aged 16, formerly Mildred Harmon, is dead at St. Vincent's hospital in this city.

Thieves Take Furniture—Walter M. and Mrs. Charles Nelson were away from their home near Beaverton, three came to their house with a large wagon and stole the furniture.

Clemency Request Continues—Many letters continue to arrive at the executive offices in Salem asking that Governor Olcott commute to life imprisonment the death sentence imposed in the cases of James Owens and John Rathie.

Portland Salesman Hurt—Gus Feldman, salesman for a Portland soap company, sustained serious cuts about the head one day last week when his automobile skidded over an embankment on the Columbia river highway near Hood River.

Harrisburg Asks Government Aid—Appeal is to be made for government aid in protecting the bank of the Willamette river which constitutes the heart of the city of Harrisburg.

Shepard's Auto Bus Lines—Portland-Astoria-Seaside division—Leave Portland 7:30 a. m., 10:00 a. m., 1:00 p. m., 4:15 p. m., 7:30 a. m., 10:00 a. m., 1:30 p. m., 2:45 p. m. and 6:15 p. m.

Lea May Remains With Board—A. H. Lea, secretary of the state fair board, will continue to remain on the board and manage the 1922 fair.

Work Rushed on Loop—Contractors engaged in grading the five-mile Booth hill unit of the valley trunk of the Mount Hood loop highway in Hood River county are making a good showing.

Shepard's Auto Bus Lines—Portland-Astoria division—Leave Portland 12 p. m., 7:30 a. m., 10 a. m., 11:15 a. m., 12:35 p. m., 4 p. m. and 6:10 p. m. daily.

Portland - Timonium Cadillac Stage, Hoyt hotel, daily at 8:15 a. m. and 2 p. m. Special arrangements made for fishing parties.—Adv.

Shepard's Auto Bus Lines—Molokini Falls division. Leave Portland 9:30 a. m., 11 a. m., 2:45 p. m.; 4:30 p. m. daily.

Shepard's Auto Bus Lines—Molokini Falls division. Leave Portland 9:30 a. m., 11 a. m., 2:45 p. m.; 4:30 p. m. daily.

Shepard's Auto Bus Lines—Molokini Falls division. Leave Portland 9:30 a. m., 11 a. m., 2:45 p. m.; 4:30 p. m. daily.

Shepard's Auto Bus Lines—Molokini Falls division. Leave Portland 9:30 a. m., 11 a. m., 2:45 p. m.; 4:30 p. m. daily.

Shepard's Auto Bus Lines—Molokini Falls division. Leave Portland 9:30 a. m., 11 a. m., 2:45 p. m.; 4:30 p. m. daily.

Shepard's Auto Bus Lines—Molokini Falls division. Leave Portland 9:30 a. m., 11 a. m., 2:45 p. m.; 4:30 p. m. daily.

Shepard's Auto Bus Lines—Molokini Falls division. Leave Portland 9:30 a. m., 11 a. m., 2:45 p. m.; 4:30 p. m. daily.

Shepard's Auto Bus Lines—Molokini Falls division. Leave Portland 9:30 a. m., 11 a. m., 2:45 p. m.; 4:30 p. m. daily.

Shepard's Auto Bus Lines—Molokini Falls division. Leave Portland 9:30 a. m., 11 a. m., 2:45 p. m.; 4:30 p. m. daily.

Brotherhood Basket Party at First Congregational church tonight.—Adv.

Str. America—St. Stephens via Columbia river, 2:30 p. m. daily; 11:30 a. m. Sunday.

Str. America—St. Stephens via Columbia river, 2:30 p. m. daily; 11:30 a. m. Sunday.

Str. America—St. Stephens via Columbia river, 2:30 p. m. daily; 11:30 a. m. Sunday.

Str. America—St. Stephens via Columbia river, 2:30 p. m. daily; 11:30 a. m. Sunday.

Str. America—St. Stephens via Columbia river, 2:30 p. m. daily; 11:30 a. m. Sunday.

Str. America—St. Stephens via Columbia river, 2:30 p. m. daily; 11:30 a. m. Sunday.

Str. America—St. Stephens via Columbia river, 2:30 p. m. daily; 11:30 a. m. Sunday.

Str. America—St. Stephens via Columbia river, 2:30 p. m. daily; 11:30 a. m. Sunday.

Str. America—St. Stephens via Columbia river, 2:30 p. m. daily; 11:30 a. m. Sunday.

Str. America—St. Stephens via Columbia river, 2:30 p. m. daily; 11:30 a. m. Sunday.

Brotherhood Basket Party at First Congregational church tonight.—Adv.

Str. America—St. Stephens via Columbia river, 2:30 p. m. daily; 11:30 a. m. Sunday.

Str. America—St. Stephens via Columbia river, 2:30 p. m. daily; 11:30 a. m. Sunday.

Str. America—St. Stephens via Columbia river, 2:30 p. m. daily; 11:30 a. m. Sunday.

Str. America—St. Stephens via Columbia river, 2:30 p. m. daily; 11:30 a. m. Sunday.

Str. America—St. Stephens via Columbia river, 2:30 p. m. daily; 11:30 a. m. Sunday.

Str. America—St. Stephens via Columbia river, 2:30 p. m. daily; 11:30 a. m. Sunday.

Str. America—St. Stephens via Columbia river, 2:30 p. m. daily; 11:30 a. m. Sunday.

Str. America—St. Stephens via Columbia river, 2:30 p. m. daily; 11:30 a. m. Sunday.

Str. America—St. Stephens via Columbia river, 2:30 p. m. daily; 11:30 a. m. Sunday.

Str. America—St. Stephens via Columbia river, 2:30 p. m. daily; 11:30 a. m. Sunday.

Brotherhood Basket Party at First Congregational church tonight.—Adv.

Str. America—St. Stephens via Columbia river, 2:30 p. m. daily; 11:30 a. m. Sunday.

Str. America—St. Stephens via Columbia river, 2:30 p. m. daily; 11:30 a. m. Sunday.

Str. America—St. Stephens via Columbia river, 2:30 p. m. daily; 11:30 a. m. Sunday.

Str. America—St. Stephens via Columbia river, 2:30 p. m. daily; 11:30 a. m. Sunday.

Str. America—St. Stephens via Columbia river, 2:30 p. m. daily; 11:30 a. m. Sunday.

Str. America—St. Stephens via Columbia river, 2:30 p. m. daily; 11:30 a. m. Sunday.

Str. America—St. Stephens via Columbia river, 2:30 p. m. daily; 11:30 a. m. Sunday.

Str. America—St. Stephens via Columbia river, 2:30 p. m. daily; 11:30 a. m. Sunday.

Str. America—St. Stephens via Columbia river, 2:30 p. m. daily; 11:30 a. m. Sunday.

Str. America—St. Stephens via Columbia river, 2:30 p. m. daily; 11:30 a. m. Sunday.

Brotherhood Basket Party at First Congregational church tonight.—Adv.

Str. America—St. Stephens via Columbia river, 2:30 p. m. daily; 11:30 a. m. Sunday.

Str. America—St. Stephens via Columbia river, 2:30 p. m. daily; 11:30 a. m. Sunday.

Str. America—St. Stephens via Columbia river, 2:30 p. m. daily; 11:30 a. m. Sunday.

Str. America—St. Stephens via Columbia river, 2:30 p. m. daily; 11:30 a. m. Sunday.

Str. America—St. Stephens via Columbia river, 2:30 p. m. daily; 11:30 a. m. Sunday.

Str. America—St. Stephens via Columbia river, 2:30 p. m. daily; 11:30 a. m. Sunday.

Str. America—St. Stephens via Columbia river, 2:30 p. m. daily; 11:30 a. m. Sunday.

Str. America—St. Stephens via Columbia river, 2:30 p. m. daily; 11:30 a. m. Sunday.

Str. America—St. Stephens via Columbia river, 2:30 p. m. daily; 11:30 a. m. Sunday.

Str. America—St. Stephens via Columbia river, 2:30 p. m. daily; 11:30 a. m. Sunday.

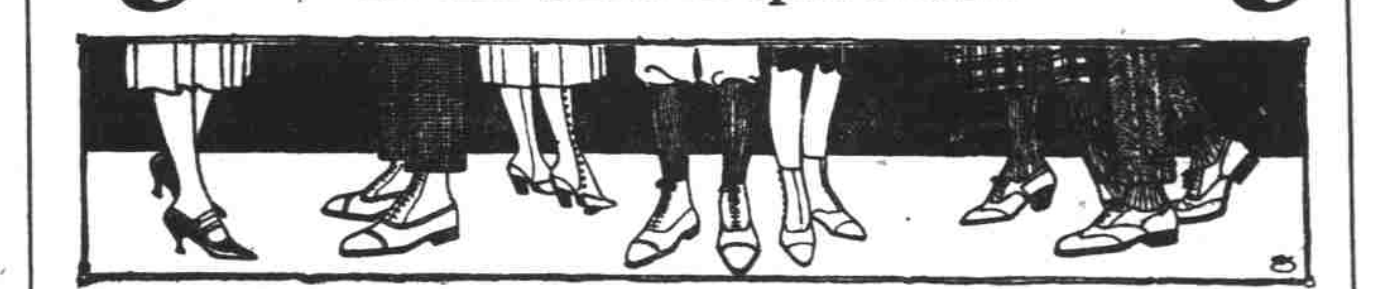
Thanksgiving Table Decorations, Favors, Napkins, Luncheon Sets, Etc.—Dennison Booth, Second Floor

Save S. & H. Stamps and Add to Your Xmas Gift Fund Without Expenditure

Store Closed Thursday. Olds, Wortman & King. RELIABLE MERCHANDISE — RELIABLE METHODS. MORRISON, ALDER, WEST PARK AND TENTH STREETS.

THANKSGIVING SALES

\$5 "Five Dollar Week" \$5 In the Shoe Department



A Shoe Selling Sensation

Women's "John Kelly" Shoes with cravenette tops, laced pattern, Louis heels. Black or brown kid. Regular \$10 and \$12.50 values.

Black kid laced shoes with military heels and narrow toes. \$9.50. Special at only \$5.00.

Men's Shoes and Oxfords in all leathers, all styles and all patterns. For young or old. Light and dark calfskin, brown and black kid or calf.

GOOD DRESS NEWS! The Garment Store directs your attention to a special Thanksgiving Sale of Women's and Misses' high-class Dresses at prices which mean splendid savings.

Women's Dresses \$23.95

Some in combinations of two or more materials. Charming styles in the season's most favored modes, including straightline, blouse, and coat effects.

Women's tan calf Oxfords or one-strap Pumps with flat heels and rounded toes, imitation ball straps. Regular \$8.50 and \$9.50 values.

Women's black or brown kid 1-strap Pumps with turned soles and half Louis heels. \$6.00 grade, a pair.

Junior Shop, Second Floor—Sizes 12, 14, 16, 18, 19 and 20. Delightful frocks for street and school wear.

Garment Salons Second Floor



DIXIE Pound and a Half Loaf and Save Money Price Reduced Sanitary Wrapper. Sweet and Clean ASK YOUR GROCER HAYNES-FOSTER BAKING CO., INC.

New Beaded Tunics For Dinner and Evening Gowns Main Floor—New sequin and beaded Tunics in many beautiful patterns on display in the Trimming Section.

Basement Sweaters \$3.98 Basement—Women's Wool Sweaters in slip-on and tuxedo styles. Latest colors. \$3.98

Thanksgiving Sale of Millinery Regular Values Up to \$25 ONE PRICE \$10 ONE PRICE

Men's Socks 29c Basement—Men's Cashmere Socks in natural and black. Sold as "seconds" on account of slight imperfections.

Semi Annual Sale Gossard Corsets Second Floor—Here's a wonderful opportunity to buy high-class Corsets at saving prices.

Popular Numbers in the Sale Sale Prices \$2.75 Gossard Corsets on sale at \$2.00 \$3.50 Gossard Corsets on sale at \$3.00

Full Carload of Cedar Chests SPECIAL PRE-HOLIDAY SALE offering values that should command the attention of everyone seeking a sensible gift.

Groceries Fourth Floor OWK FLOUR—Every sack guaranteed. On sale \$1.75 Tuesday at 49 lbs. for \$1.75

Second Church of Christ, Scientist OF PORTLAND Announces a Free Lecture ON Christian Science BY Prof. Hermann S. Hering, C. S. B.

The Most Economical House Coal of Highest Quality FAMOUS RICHMOND (PELAW MAIN) The Best Australian Lump Coal