

**WELLINGTON KOO
BEST DRESSED MAN
AT ARMS PARLEY**

By William Allen White
(Copyright, 1921, by United News)
Washington, Nov. 21.—It is one of the paradoxes of world politics that this conference for the partial disarmament of the world is assembled chiefly to ameliorate the condition of China, a nation that has maintained herself for 4000 years, conspicuous chiefly for the fact that she never armed herself.

If China had been armed to her teeth during the last 50 years there would be no need of the nations of the world laying down their arms today. For this conference is sitting and puzzling its head into befuddlement because China isn't safe to be left out at night. If there were no Chinese problem, there would be no Pacific problem, and if there were no Pacific problem, we Americans would not care how much gun-toting the world indulged in. After we have decided what the fashions in man-killing millinery will be next spring, about the only thing left for the conference to do will be to bound China and adjourn.

TERRITORY IN DOUBT
But bounding China is no easy matter. For no one knows exactly what China is territorially. Possibly Tibet is a part of China, possibly not. It may be that Mongolia is a part of China, but no one is certain. Least of all the Chinese. South China may be included as a part of China by the Peking government. But the inference is bitterly resented by the Canton government. China is not held together by the ties of a strong central government. About the only sure thing politically about the Chinese is their antipathy to a monarchy.

Each of the two warring governments—the Peking and the Canton—charges that the Japanese are aiding their enemies and possibly both of them are telling the truth. Japan might be keeping both secretly to keep them fighting. Language does not bind China. Admiral Tami, the other day in a public address in Washington, declared that the people in the south part of the city of Peking speak a different dialect from those in North Peking, and he said that the surprising thing to a Chinaman about Americans is that the Marylanders and the Pennsylvanians speak the same tongue.

RACE BINDS CHINESE
The thing that binds China is race. And in dealing with the Chinese question the conference will have to forget boundaries, not to speak of the modern political ties that hold political minded nations together in national unity.

We must consider China as a racial unity. China at this conference has for the leader of her delegation two brothers-in-law, the ambassador to England, Mr. Wellington Koo, who died three years ago. Koo, in many respects, is one of the most remarkable of living Chinamen, and one of the conspicuous figures of the conference. He seems astonishingly young, yet he is in his early fifties or late thirties. He is easily the best dressed man at the conference, and delights in a certain festive pink shirt, which he tones down with the most correct and sombre black coat and trousers, cut in what we Americans would call the Mississippi river style. He is pleased to call "moby" fashion. His collars are conservative, but his ties are a bit temperamental and of a certain collegiate juvenescence that cheers but does not inebriate. It is in his kid glove button dress shoes that he reflects his most salubrious oriental moods. In those shoes, with a jigger of emotional symbolism sketched in by his suitable socks like biters, Mr. Wellington Koo makes a sartorial cocktail that is rather better than "moby."

DANGEROUS BRAINS
Nor Mr. Balfour in his grand and gloomy and peculiar English togs, looking like an elderly satyr in black meal sacks, nor Mr. Hughes in his unexpressed neckties and revealing Freudian ventees, nor even M. Viviani in one of his gorgeous purple growlers, is the figure that Mr. Wellington Koo is when he strolls down the diplomatic primrose path into the Pan-American building, and topping his tailors' artistry, Mr. Koo wears a smile that is simple and bland. Back of the smile he carries a rather complex and dangerous set of brains.

The Japanese, when conferring with Mr. Koo, would do well to hire an American brakeman to yell at them. "Don't forget your packages."

DANGEROUS OPTIMIST
He is that engaging. His danger lies in his optimism. He realizes that China has existed as a racial entity for many thousand years. In the history of authentic history before the cataclysm of the dark ages. And he does not let himself feel that the mere incident of a European war is going to break up that mysterious indefinable thing that we call China. China is in rather the ambiguous position of being both the bride at the funeral and the deceased at the wedding; which, in the legal vernacular, means that she is the "corpus delicti" rather definitely affected with public use. And that is really what the conference is about.

Special Lunch 35c
Men's Lunch Room
8th Floor.

Lipman Wolfe & Co.
"Merchandise of Merit Only"

Take Express
Elevator to Men's
Store—5th Floor.



**Worth So Much to
Have a Coat That Fulfills
a Dearest Wish**

Worth so much, and yet when you come here you are to find that the price is not "so much"—very considerably smaller than you have thought it was, no doubt.

—Possibly you will select one of the coats at \$49.75, \$59.75 or \$69.75. Surely there will be good reasons—such delightful coats at these prices—all of them richly fur trimmed. Styles and sizes for women and misses.

Whatever Pleases You Most—Silk or Wool
The Simple or More Elaborate Style—Here Is
The New Dress, a Lovable Dress

—And Remarkable Frocks to sell at \$39.75—
—Canton Crepe, Crepe Satin and Crepe de Chine Dresses—
and Wool Tricotine, Twill Cord and Poiret Twill Dresses—in navy, brown and black.

—The new, wide sleeves are very effective on many of these new models, side panels and drops are used, as well as beads and embroidery in rich colorings and new designs to trim many of this collection, straight lines predominate.

—Third Floor, Lipman, Wolfe & Co.

**Special—Women's Imported
Gloves of a Select Quality, \$1.95**

—Women's new gloves of lambskin, capeskin and kid—some embroidered, others with Paris point embroidery, P. K. trimming or overseams.

—One-clasp and two-clasp styles, in all wanted colors and in sizes 5½ to 7; attractive assortment; special at \$1.95.

—Street Floor, Lipman, Wolfe & Co.

**Women's Union Suits—Both
Regular and Extra Sizes, \$1.15**

—The low-neck, sleeveless, bodice-top union suits, the favorably known "Princess May" brand in a finely ribbed weave.

Children's "Globe" Union Suits, 95c
—Specially priced for quick sale are these cotton-fleeced union suits; high or Dutch neck, ankle length. Sizes 2 to 12.

—Street Floor, Lipman, Wolfe & Co.



**Silk Petticoats in Selling
of Prime Importance—200 Beauties
—Choice at One Price—All \$5**

—These with the adjustable elastic band, continuous tape placket which is completely closed with glove fasteners and does not gape, the uniformly fine workmanship, perfect and even stitching (no puckering at seams), accurate plaiting and the perfect shape which is built into every garment.

—Some are all jersey, others have taffeta and satin flounces—plain colors and changeable—and extra sizes may be had at the same surprisingly pleasing price, \$5.

—Third Floor, Lipman, Wolfe & Co.

J. P. Coates'

**Crochet
Cotton
\$1 Box**

Tuesday only—

—Ten spools in a box, and a wide choice of colors. The regular price is well known and those who are crocheting Christmas gifts and other timely fancy work will come early for best selection of shades. No C. O. D. or telephone orders at this special price.

—Notions, Street Floor,
Lipman, Wolfe & Co.

**Thanksgiving
Decorations
and Greeting Cards**

—Decorations to delight the hostess who wishes to impart a touch of distinctiveness to her table appointments—all in accord with the old-time Thanksgiving spirit.

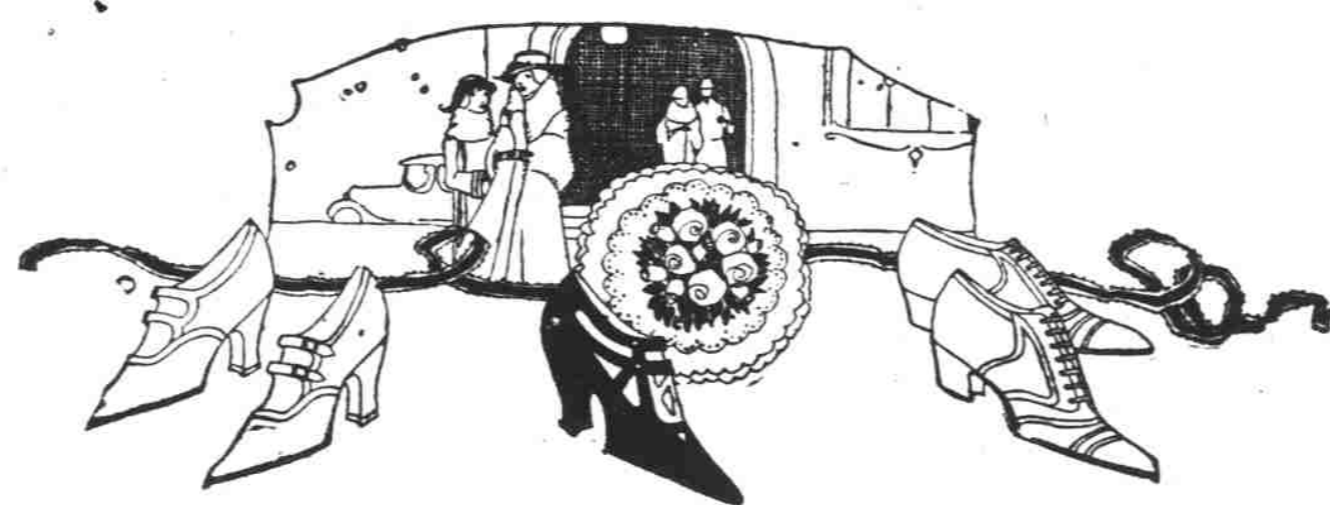
—Original are the Greeting Cards, and artistic, something purely individual "especially" for you.

—Street Floor,
Lipman, Wolfe & Co.

**Infants' Hose
3 Pairs \$1**

—Of cashmere with silk heel and toe, sizes 4 to 6. The special price made with baby's winter comfort in mind.

—Fourth Floor,
Lipman, Wolfe & Co.



A Thanksgiving Shoe Sale

—With some of the best of late Footwear in it, and all the reliability of Lipman, Wolfe's behind it—Were we to say what the exact savings are in dollars and cents the statement would seem almost unbelievable.

GROUP ONE—530 PAIRS GROUP TWO—465 PAIRS

**Fashionable Pumps,
Oxfords, Slippers
\$5.95 Pair**

—Odds and ends but a host of styles to select from—welt and turned soles, Louis and baby Louis, Cuban and military heels, straps, plain pumps and oxfords; brogue oxfords in black, brown calfskin, oxfords in black and brown kid and calf; pumps in black and white satin; straps in black and brown kid and calf, also combinations. Everything for dress and street wear. Not all sizes in each, but all sizes in the lot, mostly Wichert & Gardner and Red Cross makes. Sizes from 4½ to 9, widths AAA to D.

—Second Floor, Lipman, Wolfe & Co.

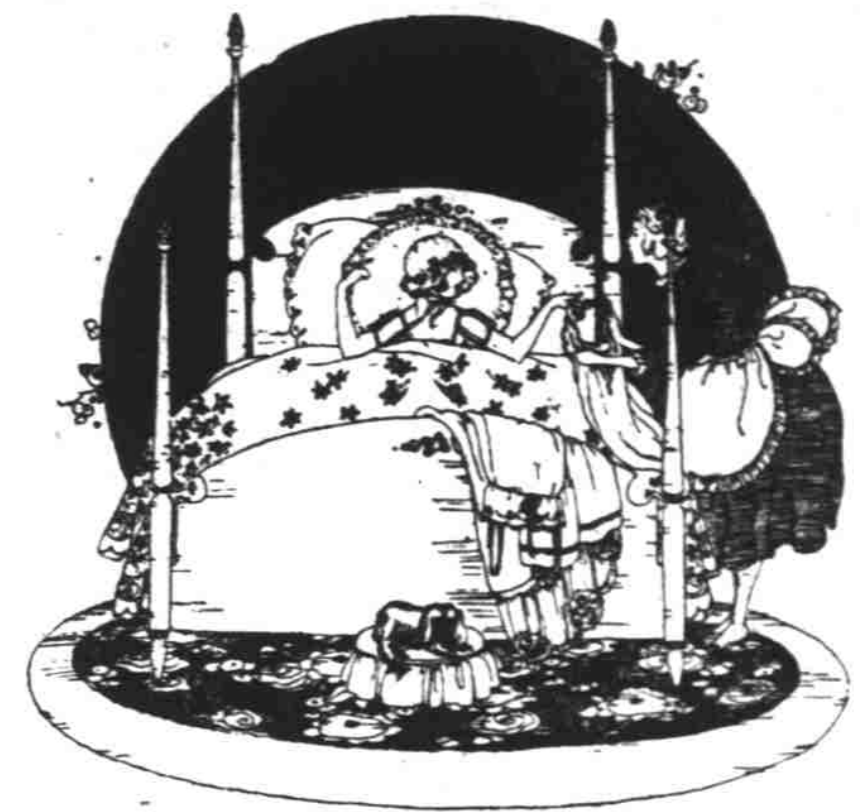
**Oxfords, Pumps and
Evening Footwear
\$7.45 Pair**

—465 pairs in this lot—practically all of them Wichert & Gardner and Red Cross—oxfords in brown and black kid and calf, straps in black kid and brown calf—all heights heels—evening shoes in black satin—patent leathers.

—Also black kid pumps—very new—in strap models. This pump is very attractive at the price. Not all sizes in each shoe but all sizes in the lot and all from our regular high-grade stock.

—Widths AAA to D. Sizes 2 to 9.

—Every sale final—no C. O. D.'s, exchanges or refunds.



AT LIPMAN, WOLFE'S—TOMORROW

A Bedspread Sale

Possibly Thanksgiving Guests Will Remain Overnight. Better Arrange to Attend This Selling

—And, look further into the future—though it may be weeks yet, or months, before you actually require new spreads, now is the time to buy—such prices may not be quoted soon again. Almost regularly, it seems, one hears of raw cotton prices going up.

**84x96-Inch Crocheted
BEDSPREADS
\$4.00**

—Extra large size, heavy weight, with hemmed ends. A splendid value.

**82x94-Inch Satin
SPREADS \$5.00**

—A fine, heavy satin spread with hemmed ends and cut corners. Many patterns for selection.

**82x94-Inch Satin
SPREADS, \$6.50**

—Extra fine finish, with plain centers; hemmed ends, \$6.50. Scalloped with cut corners, \$7.00.

—Second Floor, Lipman, Wolfe & Co.

**78x88-Inch Crocheted
BEDSPREADS
\$2.95**

—Full size, hemmed ends, in attractive patterns; firm and durable.

**82x94-Inch Satin
SPREADS \$7.25**

—This is the finest quality of all. With hemmed ends, \$7.25. Scalloped with cut corners, \$7.75.

**62x86-Inch Single
SPREADS, \$2.25**

—Crocheted bedspreads for institutions and hotels, also for single beds in the home.

**A "Dollar Sale" of Aluminum
Percolators and Sauce Pans**

Dependable, Desirable
Ware That Is Complete
Stranger to a Dollar Price

\$1.00

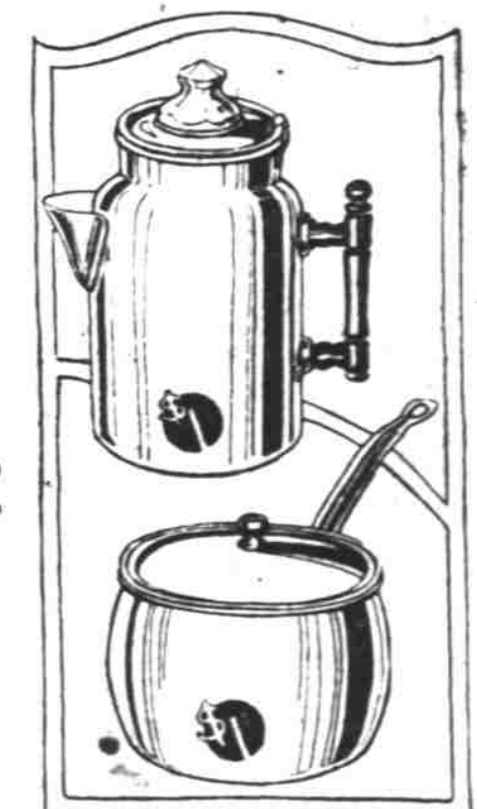
6-Cup Coffee Percolators\$1.00
3-Quart Sauce Pans with cover.....\$1.00

—These are all good weight and well finished.

OTHER SPECIALS

Aluminum Dishpans, 10-qt. size....\$1.98
Aluminum Teakettles, 5-qt. size....\$1.98
Aluminum Roasters, 15-Inch, oval...\$2.95

—Sixth Floor, Lipman, Wolfe & Co.



**Thanksgiving Week Specials
Sewing Machines Reduced**

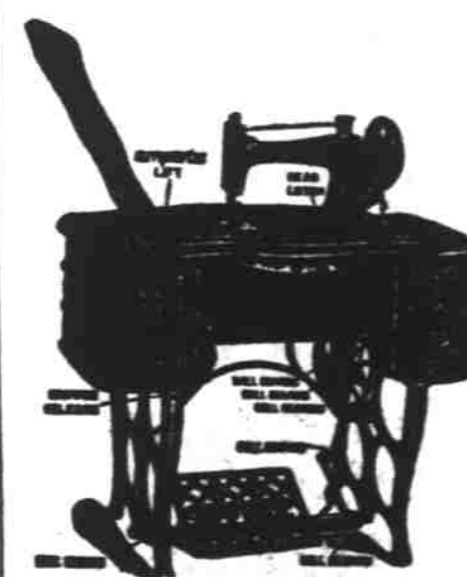
"Free" Sewing Machines
"Challenge" Sewing Machines
"Aviator" Sewing Machines

Reduced Prices

—in drophead, cabinet or desk style—can now be obtained here at the old-time prices—also the Wilson Rotary and Western Electric Portables. Included in this price reduction are supplies for all sewing machines—needles, belts, oil, etc.

—No time for Christmas embroidering this year? Then consult our machine embroidering expert, who does exquisite machine embroidery in many new designs.

—Seventh Floor, Lipman, Wolfe & Co.



**TREE TEA
CEYLON
BLACK**



**The One High-Grade
Package Tea
that sells for so little!**
An M.J.B. product