

DREDGE OPERATION SETS NEW RECORD FOR SPEEDY WORK

Port Craft Tualatin Handles 602,025 Cubic Yards in Month; Surpasses Federal Showing.

Only modestly prevents James H. Polhemus, general manager and chief engineer of the Port of Portland, from claiming the world record in dredge operation, when the port's 30-inch hydraulic suction dredge Tualatin last month excavated 602,025 cubic yards of material from the channel of the North Portland harbor.

While the United States dredge Tualatin at Mobile, Ala., in February, 1918, handled more than 500,000 cubic yards in one month, viewed from an engineering standpoint the Tualatin has really accomplished more, due to the difference in operating conditions and the kind of material excavated.

On the Mobile job, light weight material consisting of mud and silt was handled, which flowed freely through the discharge to the barge. On the other hand, the Tualatin has handled heavy sand and gravel, while the former burns the more expensive fuel oil.

Pride in this achievement is not confined to Chief Engineer Polhemus, for each and all the 80 or more members of the Tualatin's crew are proud of their share in the work. Special credit is given to the American and British flag.

While the Tualatin made the big record, the other dredges of the port's fleet are credited with showings, but their total yardage was less, due to obstacles in operation and the handling of heavier materials.

ALL ALONG THE WATERFRONT The steamship Senator sailed from San Diego and way with passengers and freight.

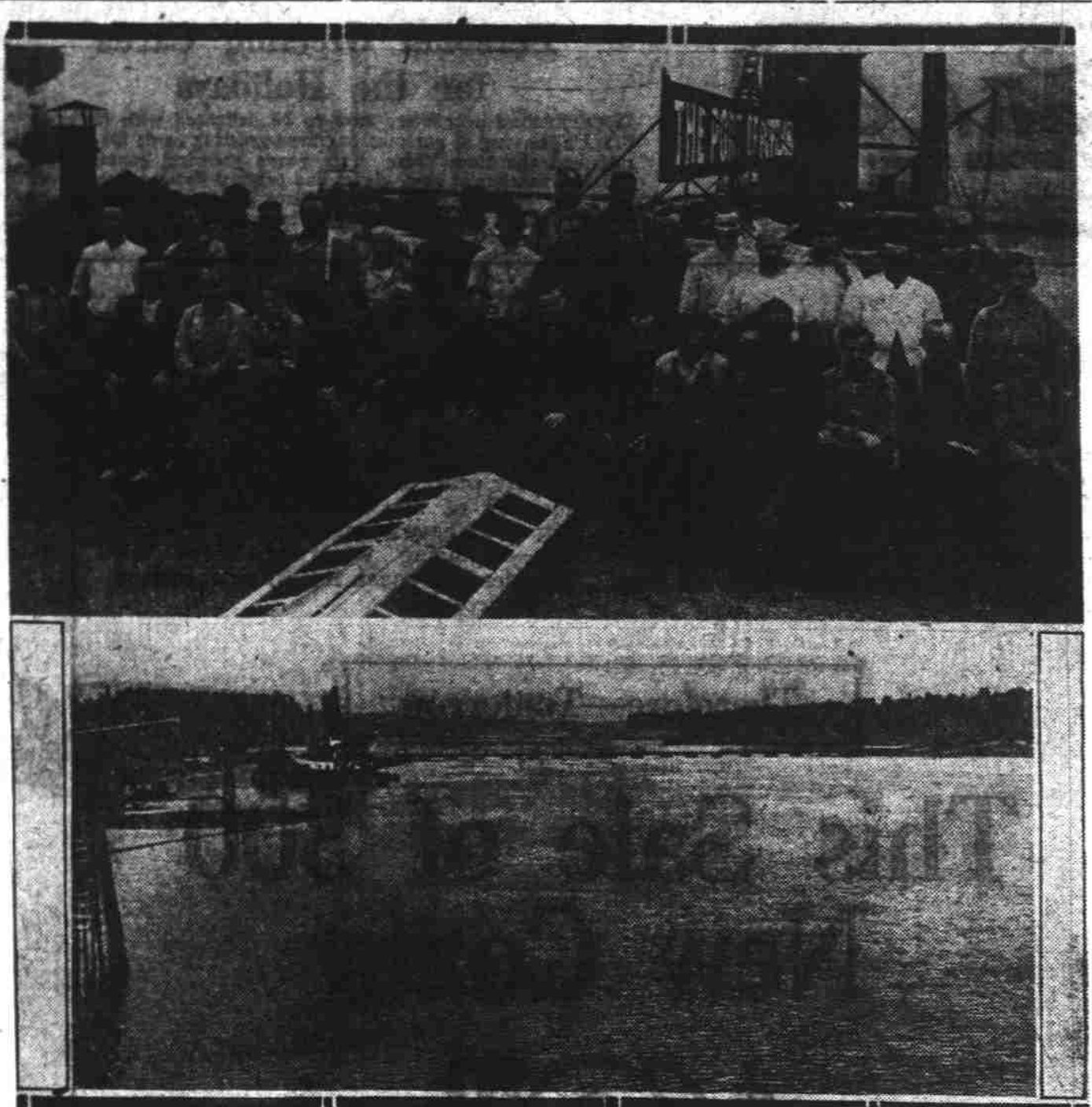
The steamer Callie of the McCormick line will sail from San Francisco for Portland with passengers and freight.

The American steamship Placid from New Orleans, arrived at Portland Saturday and berthed at terminal No. 1.

POSITIONS OF VESSELS North Head, Wash., Nov. 5.—Radio reports received at 8 p. m. gave ship positions as follows: Senator, Portland for San Francisco, 80 miles from Portland.

AT WORLD'S PORTS Astoria, Nov. 5.—Left up at 1 a. m. steamer Placid. Arrived at 1 and left up at 2 a. m. steamer William F. Herin. Sailed at 3:45 p. m. steamer Bremer. Arrived at 3:45 p. m. steamer Johan. Sailed for San Pedro, 9 p. m. steamer Placid. Sailed at 9 p. m. steamer Johan. Sailed at 11:30 a. m. steamer William F. Herin.

SUCTION DREDGE BREAKS RECORD



Above—Officers and crew of Port of Portland dredge "Tualatin." Below—View of digger.

Officers and crew of Port of Portland dredge "Tualatin." Below—View of digger.

Arrived Nov. 1.—Arizona Maru, from Manila. Sailed—Honor State, for Hongkong. Shanghai, Nov. 2.—Sailed—Montezuma, for Vancouver. Nov. 2.—Sailed—Penda Maru, for San Francisco; Santa Rosa, for Kobe. Nov. 2.—Sailed—St. Peter, for Seattle via Portland. Baltimore, Nov. 4.—Sailed—Pine Tree State, for Seattle. Nov. 4.—Sailed—Robert Dollar, for Norfolk. Nov. 4.—Sailed—Ballflower, for Philadelphia. Nov. 4.—Arrived—Erie Maru, from Norfolk. Arrived Nov. 4.—Kentuckian, from New York. Sailed Nov. 3.—Willapa, for New York. Nov. 4.—Arrived—F. J. Lachman, from Seattle. Terrier, from Portland. Sailed Nov. 4.—Sailed—Niels Jensen, for Portland. Sailed Nov. 4.—Sailed—Tomura Maru, from Honolulu. Nov. 5.—Sailed—Maid, for San Francisco. Arrived Nov. 5.—Wait Kader, from Shanghai. Arrived Nov. 3.—Tomura Maru, from Seattle, with part of deckload lost. Sailed Nov. 4.—Sailed—Comona, for Seattle via Portland; Mexican, for New York; motorship Charles Watson, for Tacoma, 4 p. m. Raymond, Nov. 4.—Sailed—Solano, for San Diego, 11:30 a. m.; Gray Harbor, for San Pedro, 12:15 p. m.; Canadian Observer, for Vancouver, 1:45 p. m. Aberdeen, Nov. 4.—Arrived—Tahoe, from San Pedro, 3 p. m.; Carmel, from San Pedro, 3:30 p. m.; Helix, from San Francisco, 9 p. m.; Willa, from San Pedro, 9 p. m.; Sailed—Harwood, for San Pedro, 3 p. m.; Coaba, for San Francisco, 3 p. m.; Victoria, Nov. 4.—Passed out—City of Victoria, for Taku Bay, 4 p. m. Sailed—Kamahi Maru, for Seattle, 10 a. m. Everett, Nov. 5.—Arrived—Julia Lockwood, from Seattle, 10 a. m. Winslow, Nov. 4.—Arrived—Schoner Mary E. Foster, from Honolulu, in tow tug Oregon, 10 p. m. Tacoma, Nov. 5.—(I. N. S.)—Arrived—Alabama Maru, from Seattle, 1 a. m. Arrived Nov. 5.—Schoner Bremer, from Astoria, 10 p. m.; Yoshida Maru No. 1, from Kobe, 9 p. m.; Junau, from Seattle, 4 p. m.

Notice to Mariners Washington—Willapa Bay—Changes in aids: On September 24-28, 1921, the following changes were made in the bearings of Willapa Bay to conform to changes in the channel: (a) Entrance Channel Buoy 13 is located on the bearings—Boathouse ocean beach, Cape Shoalwater, 18 degrees, 30 minutes; Coast Guard station, North Cove, 54 degrees, 30 minutes; Entrance Channel Buoy 13 is moved into 32 feet of water on the bearings—Boathouse ocean beach, Cape Shoalwater, 7 degrees; Coast Guard station, North Cove, 43 degrees; Toke Point, tangent, 75 degrees, 30 minutes. (b) Entrance Channel Buoy 4 is moved into 32 feet of water on the bearings—Boathouse ocean beach, Cape Shoalwater, 4 degrees; Coast Guard station, North Cove, 54 degrees, 30 minutes; Entrance Channel Buoy 6 is moved into 39 feet of water on the bearings—Willapa bay light station, 9 degrees, 30 minutes; Coast Guard station, North Cove, 43 degrees; Toke Point, tangent, 87 degrees. (c) Entrance Channel Buoy 8 is moved into 50 feet of water on the bearings—Coast Guard station, North Cove, 22 degrees; Toke Point, tangent, 86 degrees, 30 minutes; Willapa bay light station, 88 degrees.

Arrivals November 5 Torrey, Norwegian steamer, from Norfolk, Baltard. Placid, American steamer, from New Orleans, general. William F. Herin, American steamer, from Garista, oil. Wapama, American steamer, for San Pedro, lumber. Norman Monarch, British steamer, for United States, general. Yechidul, Dutch steamer, for Rotterdam, general. Senator, American steamer, for San Diego, passenger and general. Lissa Vegas, American steamer, for Orient, lumber. Lissa Vegas, American steamer, for San Pedro, lumber.

Arrivals November 5 Torrey, Norwegian steamer, from Norfolk, Baltard. Placid, American steamer, from New Orleans, general. William F. Herin, American steamer, from Garista, oil. Wapama, American steamer, for San Pedro, lumber. Norman Monarch, British steamer, for United States, general. Yechidul, Dutch steamer, for Rotterdam, general. Senator, American steamer, for San Diego, passenger and general. Lissa Vegas, American steamer, for Orient, lumber. Lissa Vegas, American steamer, for San Pedro, lumber.

Arrivals November 5 Torrey, Norwegian steamer, from Norfolk, Baltard. Placid, American steamer, from New Orleans, general. William F. Herin, American steamer, from Garista, oil. Wapama, American steamer, for San Pedro, lumber. Norman Monarch, British steamer, for United States, general. Yechidul, Dutch steamer, for Rotterdam, general. Senator, American steamer, for San Diego, passenger and general. Lissa Vegas, American steamer, for Orient, lumber. Lissa Vegas, American steamer, for San Pedro, lumber.

Advertisement for Dr. C. Smith Long & Stevenson, a dentist. Text: "Did your dentist ever say to you: 'Your money back if it hurts?'" "There is no need to cause the patient pain in any kind of dental work. Dr. Stevenson says that the more sensitive the teeth are, the less cause for pain when preparing the cavities for filling. Patient after patient, upon the completion of an operation by Dr. Stevenson, exclaims: 'It is wonderful! How do you do it?' Dr. Stevenson's perfected anaesthesia is 100 per cent effective. Nothing will prove to you like trying it yourself. No gas; no cocaine; not nerve-blocking. MONEY BACK IF IT HURTS!" "PYORRHEA—ITS RELIEF AND PREVENTION SUCCESSFULLY ACCOMPLISHED AND TAUGHT BY DR. LONG. ALSO SOFT, CRUMBLY TEETH CAN BE HARDENED AND DECAY ARRESTED." "C. SMITH LONG & STEVENSON 310 Bush & Lane Bldg., Broadway at Alder"

WHEAT CLEARANCE 792,560 BUSHELS SATURDAY RECORD

Vessels Bound Foreign; Rates Are Smashed and Buying on the Continent Is at Standstill.

The first Saturday in November closed yesterday with wheat exports faring better than three quarters of a million bushels and the value running over into the last hundred thousand to get into the million dollar class. Three steamships cleared with a total of 792,560 bushels of wheat at a valuation of \$902,085.

Kerp, Gifford & Co. took the lead with two vessels. The Queen Margaret carried 261,896 bushels, valued at \$288,085. Her destination is Barcelona in Spain. She was followed by the Norwegian steamship Heralda, for Italy with 270,771 bushels valued at \$285,000. This was by far the most valuable cargo-steamship for several weeks.

The British steamship Norman Monarch completed the trio. She was dispatched by Balfour, Guthrie & Co., and her cargo consisted of 259,993 bushels of wheat with a valuation of \$289,000. The Norman Monarch will proceed to Queenstown or Falmouth for orders. The next two weeks will clear the harvest of all grain vessels under charter and the route list has been reduced to two. Rates have been smashed in all directions and buying on the continent is at a standstill. One and possibly two more cargoes will be diverted to India and the Japanese will take heavy parcel lots.

Douglas Turkey Crop Two Thirds Normal Roseburg, Nov. 5.—That the turkey crop of Douglas county will be but two thirds its normal size has been brought to light by an investigation prior to the opening of the Thanksgiving market. Roseburg ships more turkeys annually than any other point in the state and, despite the low estimate this year, it will maintain its reputation. Prices are expected to be high. George Kohlhagen, one of the heaviest local buyers, has predicted an opening price of 40 cents, with a probable increase. Buyers from outside companies will be in Roseburg at the opening of the market as usual.

Leniency Shown on Account of Mother Medford, Feb. 5.—In the circuit court at Jacksonville, J. H. ("Ham") B. Lewis of Medford was sentenced to one year in the county jail, after being convicted on the charge of receiving and concealing stolen goods, taken from the local National Guard company. The sentence was suspended in case Lewis can find someone who will be answerable for him, in order that he may support his mother.

FORECASTS

Portland and vicinity—Sunday, unsettled weather, probably rain. Washington and Oregon—Sunday, partly cloudy, probably rain. Monday, partly cloudy, probably rain. Tuesday, partly cloudy, probably rain. Wednesday, partly cloudy, probably rain. Thursday, partly cloudy, probably rain. Friday, partly cloudy, probably rain. Saturday, partly cloudy, probably rain.

FORECASTS Portland and vicinity—Sunday, unsettled weather, probably rain. Washington and Oregon—Sunday, partly cloudy, probably rain. Monday, partly cloudy, probably rain. Tuesday, partly cloudy, probably rain. Wednesday, partly cloudy, probably rain. Thursday, partly cloudy, probably rain. Friday, partly cloudy, probably rain. Saturday, partly cloudy, probably rain.

FORECASTS Portland and vicinity—Sunday, unsettled weather, probably rain. Washington and Oregon—Sunday, partly cloudy, probably rain. Monday, partly cloudy, probably rain. Tuesday, partly cloudy, probably rain. Wednesday, partly cloudy, probably rain. Thursday, partly cloudy, probably rain. Friday, partly cloudy, probably rain. Saturday, partly cloudy, probably rain.

FORECASTS Portland and vicinity—Sunday, unsettled weather, probably rain. Washington and Oregon—Sunday, partly cloudy, probably rain. Monday, partly cloudy, probably rain. Tuesday, partly cloudy, probably rain. Wednesday, partly cloudy, probably rain. Thursday, partly cloudy, probably rain. Friday, partly cloudy, probably rain. Saturday, partly cloudy, probably rain.

ROAD DISTRICTS ARE UNDER BUDGET LAW

Salem, Nov. 5.—The budget law, enacted by the state legislature at its last session, requiring that estimates of the proposed budget needs for the ensuing year be approved by the tax levying body before being submitted to a vote of the people, applies to road districts as well as to all other municipal corporations, according to Attorney General Van Winkle, who has so informed E. B. Tongue, district attorney for Washington county. The levying board in a road district, the attorney general pointed out, is composed of all of the legal voters of the district, because they and they only have the power to levy a special tax on the district.

FORECASTS Portland and vicinity—Sunday, unsettled weather, probably rain. Washington and Oregon—Sunday, partly cloudy, probably rain. Monday, partly cloudy, probably rain. Tuesday, partly cloudy, probably rain. Wednesday, partly cloudy, probably rain. Thursday, partly cloudy, probably rain. Friday, partly cloudy, probably rain. Saturday, partly cloudy, probably rain.

FORECASTS Portland and vicinity—Sunday, unsettled weather, probably rain. Washington and Oregon—Sunday, partly cloudy, probably rain. Monday, partly cloudy, probably rain. Tuesday, partly cloudy, probably rain. Wednesday, partly cloudy, probably rain. Thursday, partly cloudy, probably rain. Friday, partly cloudy, probably rain. Saturday, partly cloudy, probably rain.

FORECASTS Portland and vicinity—Sunday, unsettled weather, probably rain. Washington and Oregon—Sunday, partly cloudy, probably rain. Monday, partly cloudy, probably rain. Tuesday, partly cloudy, probably rain. Wednesday, partly cloudy, probably rain. Thursday, partly cloudy, probably rain. Friday, partly cloudy, probably rain. Saturday, partly cloudy, probably rain.

HEAR YE! HEAR YE!

DM opportunity ever exist as now for the most conservative buyer to invest his cherished gold in a Motor Car of value far in excess of the amount required to purchase it? Every condition in the category of readjustment of values has worked to your advantage, and if you do not avail yourself of this opportunity, certain-ly you will regret it to buy on the bottom of the market.

HEAR YE! HEAR YE! DM opportunity ever exist as now for the most conservative buyer to invest his cherished gold in a Motor Car of value far in excess of the amount required to purchase it? Every condition in the category of readjustment of values has worked to your advantage, and if you do not avail yourself of this opportunity, certain-ly you will regret it to buy on the bottom of the market.

HEAR YE! HEAR YE! DM opportunity ever exist as now for the most conservative buyer to invest his cherished gold in a Motor Car of value far in excess of the amount required to purchase it? Every condition in the category of readjustment of values has worked to your advantage, and if you do not avail yourself of this opportunity, certain-ly you will regret it to buy on the bottom of the market.

HEAR YE! HEAR YE! DM opportunity ever exist as now for the most conservative buyer to invest his cherished gold in a Motor Car of value far in excess of the amount required to purchase it? Every condition in the category of readjustment of values has worked to your advantage, and if you do not avail yourself of this opportunity, certain-ly you will regret it to buy on the bottom of the market.

HEAR YE! HEAR YE! DM opportunity ever exist as now for the most conservative buyer to invest his cherished gold in a Motor Car of value far in excess of the amount required to purchase it? Every condition in the category of readjustment of values has worked to your advantage, and if you do not avail yourself of this opportunity, certain-ly you will regret it to buy on the bottom of the market.

HEAR YE! HEAR YE! DM opportunity ever exist as now for the most conservative buyer to invest his cherished gold in a Motor Car of value far in excess of the amount required to purchase it? Every condition in the category of readjustment of values has worked to your advantage, and if you do not avail yourself of this opportunity, certain-ly you will regret it to buy on the bottom of the market.

HEAR YE! HEAR YE! DM opportunity ever exist as now for the most conservative buyer to invest his cherished gold in a Motor Car of value far in excess of the amount required to purchase it? Every condition in the category of readjustment of values has worked to your advantage, and if you do not avail yourself of this opportunity, certain-ly you will regret it to buy on the bottom of the market.

HEAR YE! HEAR YE! DM opportunity ever exist as now for the most conservative buyer to invest his cherished gold in a Motor Car of value far in excess of the amount required to purchase it? Every condition in the category of readjustment of values has worked to your advantage, and if you do not avail yourself of this opportunity, certain-ly you will regret it to buy on the bottom of the market.

HEAR YE! HEAR YE! DM opportunity ever exist as now for the most conservative buyer to invest his cherished gold in a Motor Car of value far in excess of the amount required to purchase it? Every condition in the category of readjustment of values has worked to your advantage, and if you do not avail yourself of this opportunity, certain-ly you will regret it to buy on the bottom of the market.

TOO MANY SHOES! Thousands of Pairs Must Be Sold During the Next 60 Days!

A SHOE-SELLING JUBILEE AT ROCK-BOTTOM PRICES Buy Now a Year's Supply for the Entire Family

Advertisement for women's shoes. Text: "WOMEN'S BROWN OXFORDS WOMEN'S BLACK OXFORDS WOMEN'S THEO TIES WOMEN'S PATENT PUMPS WOMEN'S SUEDE OXFORDS WOMEN'S BLACK PUMPS WOMEN'S BROWN PUMPS WOMEN'S PATENT OXFORDS 850 Pairs of These to Sell Wonderful values. All sizes in the lot, but not in every line. You will not find a greater footwear bargain in the whole city over. Many styles from which to choose. We fit your feet." Price: \$2.00 PAIR. Images of various women's shoes.

Lake and Klamath Range Found Good

Salem, Nov. 5.—Range conditions are good, although in need of rain, throughout Lake and Klamath counties, according to Dr. W. H. Lytle, state veterinarian, who has just returned from a trip through that section of the state. Most of the stockmen in that section have sold off their surplus stock but sales at the present time are bringing good prices, Lytle states.

HELD FOR CALIFORNIA

Dallas, Or., Nov. 5.—Murley A. Walling is being held in the county jail here awaiting arrival of an officer from the sheriff's office at Stockton, Cal., where he is wanted on a charge of non-support. Walling was arrested at Falls City by Deputy Sheriff Graven.

Advertisement for women's shoes. Text: "Women's Brown Calf Brogue Oxfords A truly wonderful value. \$4.85 Women's Black or Brown Leather One-Strap and Two-Straps Women's High Shoe Brogue Effects In brown leather, walking soles, low heels. Women's Brown Calf Oxfords Plain tip or ball strap effects; many different styles for all occasions. Women's Oxfords and Pumps, per Pair \$3.85"

Advertisement for men's shoes. Text: "Men's Extra Quality Storm Rubbers 98c Women's Felt Slippers 98c, \$1.29, \$1.45 Made with padded soles. Many colors from which to choose. All sizes from 3 to 8. Men's Dress and Work Shoes—Extra Values—\$3.85, \$4.85"

Advertisement for children's shoes. Text: "Children's Patent and Brown Shoes with colored tops; also Children's Patent Button Scufflers, sizes 4 to 8. \$1.45 Children's Black Kid Shoes Lace or button; also in brown lace; sizes 4 to 8... \$1 Children's Scufflers \$2.00 In brown and in smoked elk; lace or button; Goodyear welted soles; wonderful values, these! Boys' Broad-Toe Lace In brown or black leather; solid soles and heels. Sizes 9 to 13 1/2... \$2.85 Sizes 1 to 6... \$3.45 Sieburg's SHOE SERVICE Portland's Big Union Shoe Store—Corner Fourth and Alder MAIL ORDERS FILLED AND SENT POSTPAID"

Advertisement for The Portland Hotel. Text: "The Portland Hotel Extends a cordial welcome to all visitors to the Pacific International Livestock Exposition. The GRILLE will be open for luncheon, afternoon tea, dinner with dancing from 6:30 to 8:30 and a supper dance from 9:30 to 12. OLSEN'S ORCHESTRA. The MAIN DINING ROOM will be open for breakfast, luncheon, dinner with dancing from 6 to 8 p. m. PRASP'S ORCHESTRA"

Advertisement for Dance Tonight. Text: "DANCE TONIGHT BOAT BLUE BIRD Now anchored at Bellwood. Take Oregon City, Milwaukie, Estacada Cars to Spokane Avenue, Go to Ferry Slip. Dancing 7:30 to 11:30 P. M. MERRY FRENCH DANCE ORCHESTRA"