

## BULL RUN WATER AVAILABLE SOON TO NEW DISTRICT

### System Just Installed to Serve Hillside District Immediately Adjacent to City on West.

Water soon is to be supplied to approximately two square miles of land embraced within the limits of the recently organized Sylvan water district that adjoins the city immediately on the west extending to the Washington county line and which reaches from the Canyon road to the Cornell road.

By availing themselves of the provisions of the legislative act of 1917 whereby municipalities are authorized to organize municipal corporations for the purpose of supplying themselves with water for domestic purposes, to issue and sell bonds, levy taxes and exercise the right of eminent domain, the residents and property owners affected organized the district more than a year ago.

### BONDS APPROVED

At an election some months ago the voters of the district by an overwhelming majority approved the plan to issue bonds in the sum of \$26,800 to finance the project. The district commissioners, R. B. White, W. C. Hoffman and C. E. Duhkopf, have been tireless in their efforts to carry the plan to a successful conclusion.

Under the direction of H. L. Gilbert, engineer, the water system has been installed and will be in complete operation within 30 days. The water supply is taken from the city reservoir on King's Heights, at an elevation of 865 feet, and is pumped to two elevations: a reservoir at an elevation of 1240 feet and a tower tank at an elevation of 1320 feet, which provides sufficient head to supply all of the district.

A pump house has been erected on the Barnes road at the city limits, whence the mains lead. The pump installation includes an automatic control which makes unnecessary the services of an operator. The control starts the pump when the water in the reservoir or tank reaches a certain level. The reservoir has a capacity of 200,000 gallons and a tank 5000 gallons. Already four miles of mains have been laid varying from two inches to six inches in diameter.

### PROBLEM DIFFICULT

The problem was to supply water at minimum cost to a district with greatly varying elevation and with patrons widely scattered. The system as installed is sufficient to provide for a population five times the present one.

These western hills long have been retarded in their development primarily through want of Bull Run water. Older residents will recall an attempt to develop it years ago when a canal was built up Barnes road prior to the existing line which terminates at Mount Calvary cemetery.

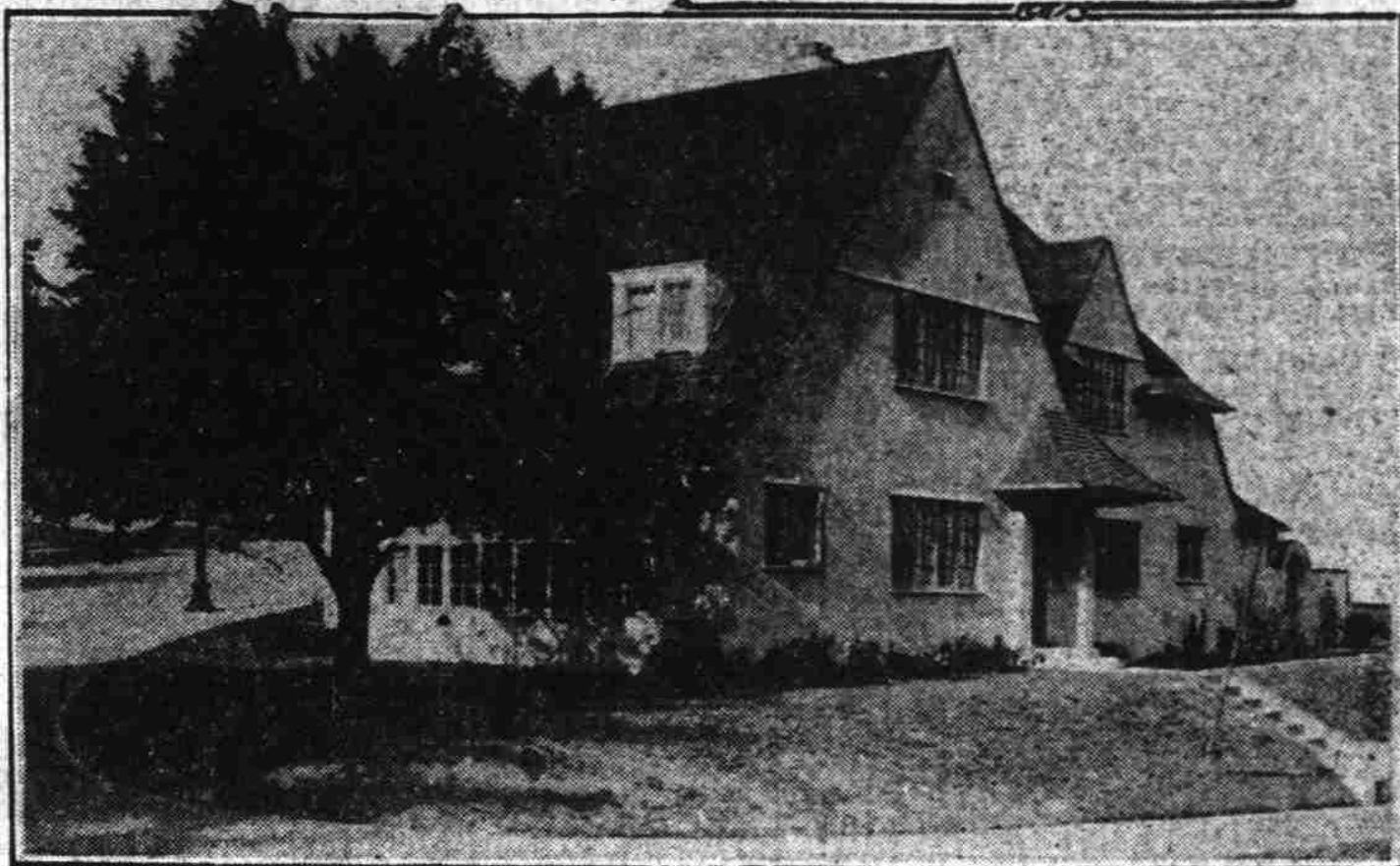
There are perhaps 400 or 500 people now permanent residents of the Sylvan water district, while others maintain summer homes there. The high point in the district has an altitude of 1270 feet and is occupied by the Frederick H. Strong summer home, which is named "Pen-y-bryn, the Welsh term meaning "highest hill." And it is the highest point in the range of hills that border the city on the west.

The Jacobson-Jensen company, contractors, will be ready to turn over the works in about two weeks.

## Work to Be Started On Home for Nurses

Spokane, Wash., Aug. 20.—Construction of a \$240,000 nurses' home at the Sacred hospital, which will be seven stories in height and built of reinforced concrete, with facings of brick and terra cotta, is to be started in the near future. Plans which Albert Held, architect, has been at work on for four months are to be completed within the next week or 10 days. Borings for footings are being made in the hospital grounds to permit the completion of the plans. With this done, construction is to follow speedily.

## NEW GREENE HOME ON PATTON ROAD



House recently completed at the northeast corner of Vista avenue and Patton road for Mrs. A. G. Greene at a cost of approximately \$12,000. Plans were prepared by Wade H. Pipes.

One of the most handsome of the new homes on Portland Heights is the residence at the northeast corner of Vista avenue and Patton road, recently completed for Mrs. A. G. Greene. The architecture of the house is described by Wade H. Pipes, who prepared the plans, as a modern English style. Exterior walls are of cream stucco, and the roof is of red tile. A dominant feature of the exterior is the high walled garden on the north side of the house.

An archway let through the wall on the street side leads to a paved space yard at the rear.

There are seven large and attractive rooms in the Greene house. A tiled entrance hall leads to the spacious living room, which is featured by a wide fireplace with a raised hearth. All floors are of hardwood. Special attention has been given to the size and position of windows to secure maximum benefits of light and ventilation. There is a comfortable sun room with French doors opening onto a brick paved terrace on the west side of the house and many other features which make for comfort. Construction cost was about \$12,000, according to the architect.

## PIPE COMPANY TO ERECT BUILDINGS

### New Site Recently Purchased Includes 125,000 Square Feet of Ground.

Factory buildings estimated to cost more than \$25,000 will be constructed immediately by the Concrete Pipe company of Portland on a site recently purchased in the Albina industrial tract placed on the market by the Portland Realty & Trust company. The purchase includes 125,000 square feet of ground space, nearly three acres of which is supplied with trackage, paved streets and other improvements.

Increasing business necessitated the erection of the new factory, according to Phil Easterday, one of the officials of the Concrete Pipe company. Yesterday stated that the volume of the concern's output had increased from \$2400 in 1912 to more than \$700,000 in 1920. The old location of the company's plant was below Larrabee street, necessitating an upgrade haul which will be eliminated at the new location.

The Concrete Pipe company operates 13 factories at various points in the Pacific Northwest and their products are rapidly gaining in favor throughout the United States. The new plant at Albina will combine the best points of the other factories and will include new ideas resulting from a study of large industrial centers of the country.

### BUYS RICHARDSON HOME

Forest Grove, Aug. 20.—Mrs. Grace R. Barrett, from the Middle West, has purchased the Cornelius Richardson residence on Fifth street. The Barrett family located here because of Pacific University, where Miss Maude Barrett has been a student for two years.

## Twenty Tracts Sold In Plympton Acres To Home Builders

More than 20 tracts in Plympton acres, the new subdivision just east of the city on the Powell valley road, recently put on the market by Ritter, Lowe & Co., Board of Trade building, have been sold to prospective home owners since the tract was opened up scarcely a month ago, according to A. R. Ritter. Revival of interest in suburban acreage was declared by Ritter to be one of the most noticeable features of the present realty situation.

The firm, which specializes in acreage tracts in the section east of the city, is at present putting on three subdivisions in that general locality, and interest was declared keen in all three tracts. In Plympton acres, seven new dwellings have been started since August 1. It was said, indicating that the property is being purchased with a view to immediate development, which is located about 10 blocks east of the city limits between Powell valley and Section Line roads, contains approximately 80 acres and has been divided into acre tracts.

Ventura is located on the Base Line road about two miles east of the city limits and is being sold in tracts of from one quarter to one acre, while Rittlow area is located about 10 miles out on the Base Line, Section Line and Barker roads and is being sold in five acre tracts. The housing situation in the city is being relieved to a considerable extent by the development of suburban properties, according to Ritter, who stated that the section just east of the city on the Base Line and Powell valley roads had been a regular bee hive of activity during the summer, with a large number of new dwellings started.

## BUYERS FLOCK TO MIDDLESON HOMES

### Realty Firm Reports the Sale of 32 Acre Tracts in New Addition on Terwilliger Boulevard.

The Fred German company reports the sale of 32 tracts in Middleson Homes, a subdivision platted under the direction of the firm about a year ago. Thirteen of the purchasers of these parcels have already started to erect houses. Another addition to this plat is being surveyed which is contiguous with the new extension of the Terwilliger boulevard, the necessary land for this boulevard having been donated to the county by the owners of the tract.

This company has also taken over the direction of the River Villa acre tracts, re-subdivision of River Villa acre tracts, lying between the River road and the Willamette river, near Courtney station. This has been platted in tracts ranging in size from a quarter of an acre up. The novel feature of this subdivision is the fact that a tract of several acres on the river front has been set aside for the sole use of purchasers of this tract, so no matter where the purchaser buys in this entire plat, he has equal river front rights, with the privilege of picnicking, bathing, fishing and mooring boats, and it is expected that in view of the fact that river front rights are practically extinct, this tract will move very rapidly.

German reports a healthy demand for small acreage tracts and is contemplating a brisk call for close-in small urban tracts in the fall. A tract of 12½ acres on the Lake road near Milwaukie was sold to C. R. Hines and A. B. Combs, the purchase price being \$10,000. The new purchasers have just completed a neat bungalow on their land, having bought it solely for home purposes. The firm also has handled a large number of farm sales in Oregon and Washington during the past three months.

## Grays Harbor Has Revival in Business

Aberdeen, Wash., Aug. 20.—Revival is shown in the Grays Harbor country in the building line. The annual report of the building inspector of this and other cities of the county will show a large increase in building projects over a year ago. The improvement is principally in the building of a considerable extent of armory, the contract for which has been let by the state commission, will add much to the total. Its cost is estimated at \$125,000.

### KELSO BANK NEARS COMPLETION

Kelso, Wash., Aug. 20.—With the walls of the First National bank building completed and the roof on, the scaffolding has been taken down and the workmen are proceeding with the interior work under the direction of N. A. Strand, who has charge of the construction. The building will be ready for occupancy about October 1. It makes a most handsome addition to the Kelso business district, being the finest banking building in Southwest Washington.

### NEW HOUSE BUILT

Kelso, Wash., Aug. 20.—J. H. Cullom of West Kelso has recently completed one new residence on the west side and has four more under construction. He has them under way and expects to complete the interior finishing work during the rainy season. As soon as these are completed he plans to commence the construction of three more on additional ground he owns nearby.

### NAPAVINE HAS NEW HIGH SCHOOL

Chehalis, Wash., Aug. 20.—Work on the new high school building at Napavine is well under way. The building of the state school is supervised and the work is being done by day labor.

### COUNTY HOSPITAL OPENED

Chehalis, Wash., Aug. 20.—The new county tuberculosis hospital at Elmer called Oakhurst sanatorium, was opened August 1.

## REALTORS PLAN ANNUAL MEETING AT PARADISE INN

### Large Delegation of Portland Will Make Trip by Automobile, Leaving Here Tuesday Morning

Energetic preparations are under way for a record attendance of Portland realtors at the fifth annual convention of the Interstate Realty association at Paradise Valley this week, and Paul A. Cowgill, secretary of the Portland Realty board, announced Saturday that a total of 75 members and their friends had made reservations for the trip. About 50 of the realtors will go by automobile and the balance will go by train to Tacoma at take busses from there to Paradise Inn.

The auto caravan will leave Portland Tuesday morning and journey that day to Tacoma. After a night's rest, the Oregon delegation will join the Tacoma realtors on the last lap of the run early Wednesday morning. The convention opens at 10 a. m. Wednesday, with a meeting of the executive committee in the auditorium of the inn. Delegates will be drifting in all the forenoon, according to Cowgill, who is an authority on the subject. The first session of the convention will be at 1:30 p. m., when John H. Lyons of Tacoma will lead in the singing of original realtors' songs and choruses.

### BOISE MAN PRESIDENT

The real business of the association will start at 1:45, when the event will be officially declared open by President Ira E. High of Boise, Idaho. Following an invocation by Rev. J. W. Kennedy of Tacoma, address of welcome will be delivered by Mayor C. M. Riddell, of Tacoma and G. M. Elliott, president of the Tacoma Realty Board. President High is scheduled to respond in behalf of the realty association. Pertinent topics will be discussed by Judge Charles P. McCarthy of Boise, Idaho; D. W. Davis of Boise, governor of Idaho, and W. H. Miller of Tacoma, chairman of the convention committee. The day will close with a get-together meeting and song fest at 8:15 a. m.

Coe A. McKenna, president of the Portland Realty Board, will preside at a breakfast conference on "Taxation and Legislation" at 8 a. m. Thursday, assisted by E. S. Goodwin of Seattle, Herbert Gordon of Portland and Professor F. J. Laube, chairman of the board of the University of Washington. Simultaneously a conference on "Logged-Off Lands" will open under the guidance of George M. Elliott of F. F. Gregory of Tacoma, J. E. Calder of Montesano, Wash.; T. L. Greer of Sandpoint, Idaho, and W. A. Irwin of Seattle. "Salesmanship and Development of Sales Forces" will be handled at a conference presided over by C. T. Cross of Victoria, B. C.; J. Logie Richardson and J. T. Knappenburg of Portland, the last two delegates being members of the Frank L. McGuire agency.

Another series of conferences will convene at 10 a. m. Association ethics will be covered over by H. H. Farman of Calgary, Alberta; W. D. Potter of Nampa, Idaho, and Frank McCrill of Portland. Advertising and publicity will be handled by Joe Roche of Elgin, Ill.; Frank E. Schuler of Lewiston, Idaho, and S. E. Hege of Spokane. A. L. Murphy of Caldwell, Idaho, is scheduled to lead a conference on "Exclusive Listing, Multiple Listing and Commissions" assisted by Ritter of Portland and I. G. Hayford of Salem.

Reports of officers of the association, led by President Ira E. High of Boise, will be given by Herbert C. Cuthbert of Seattle who will tell what the Northwest Tourist association is doing for the real estate business. Robert C. Erskine is on the program for an address on "Clients' Opportunities" and "Through the Realtors' Service," and Henry L. Freking of Chicago will present the advantages of home ownership. The five-minute speaking contest will be the main event of the Thursday evening program. Discussion of reclamation and irrigation of arid lands will be led by A. L. Murphy of Caldwell, Idaho, at a breakfast conference Friday morning. E. H. Clark of Pocatello, Idaho; Warren G. Swenson of Boise and Ross K. Tiffany of Spokane also will speak on this subject. Coe A. McKenna will preside at a conference on "Leases and Rentals" assisted by G. D. Poe of Tacoma, C. J. Brown of Weiser, Idaho; J. C. Snow of Pendleton and C. C. Conner of Walla Walla. Home building from the realtor's viewpoint will be discussed by Joe Roche of Billings, Mont.

Benefits of the real estate license law will be reviewed at a conference headed by C. T. Cross of Victoria, N. M. Apple of Lewiston, Idaho; Paul Davis of Boise and W. H. Winfree of Spokane. H. H. Farman of Calgary will lead the discussion on "Office Systems and Forms," assisted by Harry Beckwith of Portland and Winnie Pettyjohn of Salem. The secretaries conference will be headed by G. M. Elliott of Tacoma, Paul A. Cowgill of Portland and Samuel Collier of Seattle.

A trip to Nisqually glacier, under direction of the Tacoma Real Estate association, will leave Paradise Inn at 1 p. m. Friday, and return in time for the annual campfire entertainment in the evening. The program for the campfire includes addresses by President High of the Interstate association, Bishop Walter Sumner of Portland, Henry Sicade of Tacoma and music by the Realtors' jazz orchestra.

Election of officers and selection of the 1922 convention city will be held Saturday forenoon, and the convention is scheduled to adjourn at noon. On the trip back to Tacoma the delegates will stop at La Grande to inspect the hydro-electric power plant of the city of Tacoma and will inspect the army cantonment at Camp Lewis. According to F. O. Brockman, secretary of the Interstate association, the attendance at the convention will surpass that of any previous year and will probably number 400 delegates.

## 70 Acres of Orchard Land Changes Hands At Price of \$53,428

Wenatchee, Wash., Aug. 20.—Instruments were filed Saturday in the county auditor's office, conveying 70 acres of orchard one and one half miles south-east of Dryden, known as the Paradise orchard, from the Paradise-Wenatchee Orchard company to G. A. Schaffer of Cashmere. The price paid was \$53,428.60. An agreement was entered into October 3, 1919, whereby the land was to be sold to H. G. Bohke of Dryden. He assigned it to the Bohke Fruit company, which has since become bankrupt. In buying the land, Mr. Schaffer agrees to defend his title against the trustees of the Bohke creditors, without recourse

to the Paradise-Wenatchee Fruit company. He also agrees to plant apple trees on vacant parts of the tract.

### NEBRASKAN BUYS FARM

Chehalis, Wash., Aug. 20.—Howard Brown of Nebraska has purchased the 45 acre Vabeyda farm, three miles south of Chehalis, for \$13,500. The farm is improved and is located in the Newaukum valley. Brown also has a lease on the W. P. Jubb farm, four miles south of this city.

### POSTOFFICE IN NEW HOME

Harrisburg, Or., Aug. 20.—The post-office moved into new quarters in the Cartwright block last Sunday. Postmaster Anderson asserts that he has the finest equipment of any town of Harrisburg's size in the valley. Furnishings are of steel and mahogany and of the latest type.

## Shore Park Site Offered to State

Olympia, Wash., Aug. 20.—Twenty acres of land on the shore of Hood canal, near Brinnon, has been offered to the state as a park site by J. W. Christian of Brinnon, who is reviving a resort popular before the war. The offer is made on condition that the state will include within the site 20 chains of tidelands in front of the property, according to the communication received by Clark V. Savidge, state land commissioner. Christian has been advised by the land commissioner that if the park committee found the site available the land commissioner's office would be ready to transfer the tidelands.



## PRESENTS ANOTHER Gigantic Sale of Aprons

# 95c

## Madras Gingham Percale

It would be impossible for us to enumerate all the styles included in this lot of wonderful aprons. They come in fine quality gingham, madras and percale, in coverall, Polly Prim styles, with tie-back and belted and elastic waist bands, in light and dark fancy patterns. There are 769 aprons included in this lot and we invite you to

## Other Monday Specials

- Pebble Cloth 75c**  
36-inch navy, pebble cloth, half wool. Just the proper material for school dresses. Formerly sold for \$1.25 a yard. Limit 5 yards to a customer.
- Printed Voiles 49c**  
Included in this lot of printed voiles are our regular 69c, 85c and 98c patterns. They all come in a fine quality mercerized voile in very distinctive color combinations and patterns.
- Boys' Wash Suits Half Price**  
Our entire stock of boys' wash suits, including the Kaynee brand. A broken line of sizes.
- Boys' Scout Hose 35c**  
One broken line of Boy Scout medium weight stockings, in black only. Regular 50c a pair.
- Children's Sateen Bloomers 49c**  
Children's mercerized black sateen bloomers. Sizes 6 to 18 years. Full cut, elastic at waist and knee. Special 49c.
- Children's Union Suits 39c**  
Boys' and girls' fine cotton union suits, knee length, sizes 4 to 16. Regular 59c values.
- Kaynee Waist Union Suits 89c**  
Boys' and girls' waist union suits of fine nainsook with bloomers or plain, in sizes 2 to 8 years. Formerly sold for \$1.25.
- Women's Fine Cotton Union Suits 39c**  
Broken range of women's fine cotton union suits. Bodice or pant top, lace or cuff knee. Regularly 75c. Sizes 36 to 46.
- Men's Socks 13c Pr.**  
Men's half hose, black, gray, cord or v. n. Medium weight, double heel and toe, ribbed top. Sizes 9½ to 11½.
- Balbriggan Union Suits 98c**  
Men's regular \$1.50 balbriggan union suits. Short sleeved, ankle length. Ribbed cuff on sleeve and ankle. Sizes 34-42.
- Percale, a Yard 11c**  
One complete line of very good quality percale has been reduced to this special price for general clearance sale.
- Mergerized Sateen 35c**  
We are closing out one entire lot of mergerized sateen, 36 inches wide, in black and colors. Regular 49c values.
- Bungalow Cretonnes, Yd. 19c**  
Our entire line of 36-inch 25c bungalow cretonnes in a wide range of colors. Suitable for comforters and aprons.
- 36 and 38-Inch Suitings 69c**  
36-38-inch suitings, checks, diagonal twills and mixtures, also tan covert cloth. Former price \$1.50 a yard.
- Mercerized Poplin 23½c**  
Our entire line of 39c mercerized poplin, white and a full range of colors.
- 35c Nainsook 25c Yd.**  
A very fine quality 36-inch cambric finished in nainsook which we are closing out.
- Honest Abe Work Shirts 98c**  
Our regular \$1.50 black satine and khaki "Honest Abe" work shirts special for 98c. Sizes 14½ to 17.
- Jap Crepe 39c Yd.**  
All the desirable colors of Jap crepe. 32 inches wide. Special for 39c.
- Melbourne Challis 19c**  
A new stock of Melbourne 36-inch challis, regular 25c values; in all fall patterns. Suitable for all families.
- Domestics 36-In. Unbleached Muslin, Yard 10c**  
42-inch pequot pillow tubing 50¢ a yard.  
42-inch homespun pillow tubing 35¢ a yard.  
72-inch stitched cotton batts \$1.00 each.  
26-inch white and colored outing flannel 12½¢ a yard.  
72-inch pequot sheeting 65¢.  
81-inch pequot sheeting 69¢.  
Gray cotton blankets \$1.75.  
42x60 blankets \$2 each.  
72x90 pequot sheets \$1.75.  
81x90 pequot sheets \$1.90.  
36-inch white muslin 12½¢ a yard.  
81x90 Bolvedere sheets \$1.25 each.  
16-inch bleached Indian Head 20¢ a yard.
- Women's Lisle Stockings 35c**  
Women's fine lisle stockings, made with elastic top, white only. Sizes 8½ to 10. Regular 50c values. Ribbed top.
- Silk and Fiber Stockings, a Pair 98c**  
Women's pure silk and fiber mixed hose. Sizes 8½ to 10. Regularly sold for \$1.25.
- Muslin and Batiste Gowns \$1.00**  
Women's muslin and batiste gowns, daintily embroidered, trimmed with lace, fitted with kimono or set-in sleeves. Full cut. Regularly \$1.95 and \$2.25.

## Here Is One of the Prettiest Homes in 'Irvington'



ON THE northeast corner of Twenty-first and Clackamas streets—the center of "IRVINGTON" is a 100x100 (quarter block) and a lovely nine-room house with sleeping porch—large enough for three good sized beds—hardwood floors, four large bedrooms, and in fact, modern in every detail, including a GARAGE. Most attractive terms.

This house has just been recently painted throughout and at present is in splendid condition. This property originally cost \$22,000 and to make a quick disposal, we are going to make a great sacrifice. \$11,500 will buy it with \$1500 cash, \$100 per month including interest at 6 per cent, balance like rent. Call us up and we will show you the greatest snap ever offered in this city. Remember the price—\$11,500.

RIELY & GUSTAFSON, 1203 Yeon Bldg.—Mar. 1456