

EFFICIENT MARKETING

FARM BUREAUS IMPORTANT IN COMMUNITY LIFE

By R. C. Stewart
There seems to be considerable misunderstanding as to the exact purpose and objects of the farm bureau. Many seem to mix the farmer bureau up with a great deal with the cooperative marketing associations and still others seem to think that it is to a great extent a political body working under cover until thoroughly organized.

FOR COMMUNITY INTEREST

During the late war, when production of more foodstuffs was essential, it was found that a great many of the producers could not be reached through the county agent nor the agricultural schools, nor in many cases could support be secured from the counties with which each producer was affiliated.

TOO SMALL FOR EXPERT

The community is really the fundamental unit of the farm bureau. A farmer is too small, however, to require the services of an expert adviser to spend all of his time there, nor would a neighborhood be able to support such an expert.

For these reasons it was found advisable to organize all of the communities of a county into a county farm bureau, and to employ one or more county advisers or county agents to spend their time in the county, dividing their time among the different communities.

The movement for county farm bureaus became so general that it was not long before a large per cent of the counties of each state had organized in some form or another. With the closer cooperation of the farmers in the various parts of the state it was found that there were a great many problems which could not be solved through local project work and so statewide organizations were formed.

LOBBYING NECESSARY
Although the primary purpose of the entire system of farm bureaus is to better home conditions on American farms, it has been found impossible to bring about the best results in localities until certain conditions are met.

WATCH ORGANIZATION
The bureau has been called upon, however, to form an opinion about the feasibility of standing of grain organizations and has gone so far as to hold hearings for the purpose of determining whether or not certain plans and systems were sound in principle or not.

Rotary Plow to Be Demonstrated on Farm Near Chehalis
Chehalis, Wash., Aug. 13.—F. T. Hamshaw, who has recently returned from a tour to California, is making arrangements for a rotary plow he and his business associates are placing on the market.

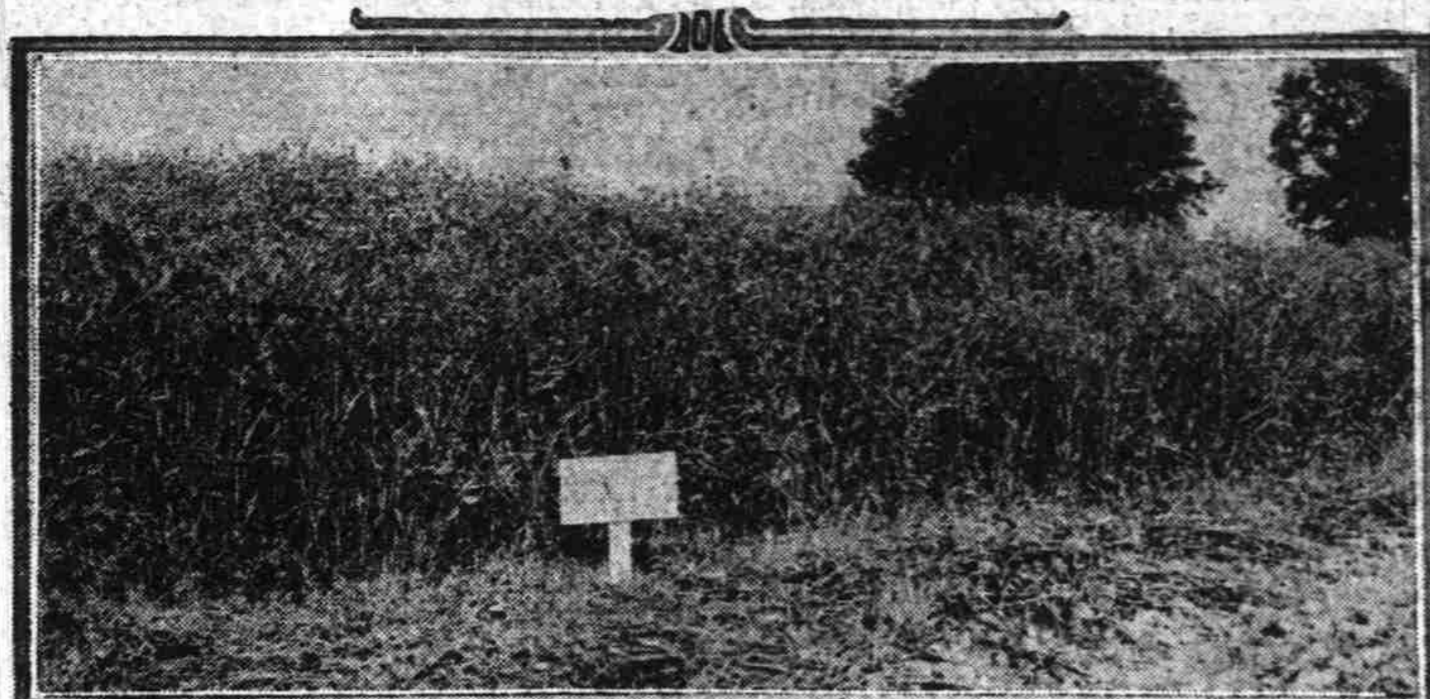
Grays Harbor Fair To Be on New Site
Aberdeen, Wash., Aug. 13.—Opening of the Grays Harbor county fair the last days of August and the first days of September at Elma will be of much greater interest, according to the county agent, on account of the new grounds which are to be detailed.

Demonstrations in Culling Are Planned
Eugene, Or., Aug. 13.—A series of poultry demonstrations, this time in culling, have been scheduled for August 13 and 14 at the Oregon Agricultural College.

Hen Raisers Sign With Association
Spokane, Wash., Aug. 13.—Owners of 25,000 hens have been signed up by the Civic Cooperative Poultry Producers' Association, now organizing in the growers of market eggs in eastern Washington.

BUCK SHEEP SOLD
Dayton, Wash., Aug. 13.—The R. A. Jackson Tuoman and Rambouillet Stock farm has sold 400 bucks to the firm of Foster & Melton of Dillon, Mont., for \$14 per head.

NEW PEAS PRODUCE GOOD ENSILAGE



Silage in the making. Tangier peas on the experiment station farm at the Oregon Agricultural college.

CATTLE CLUB SEES JUDGING CONTEST

The Columbia County Jersey Cattle club held a picnic meeting at the Sunnybank Jersey farm near Scappoose on August 6. L. G. Smith, manager of the Sunnybank farm, as well as president of the Columbia County Jersey Cattle club, had invited the "Boys and Girls" club members from Multnomah and Clackamas counties to take part in the judging demonstration and a large number were on hand to take part.

L. J. Allen, one of the state leaders of livestock clubs, supervised the judging contest and assisted in bringing out interesting discussions upon the points of anatomy.

Mrs. Anton Malier, secretary of the Clackamas County Jersey association, exhibited a gold medal won by Clackamas county for the best Jersey exhibit at the Pacific International last year.

100 Holstein Cattle To Be Exhibited at Fair at Centralia

Centralia, Wash., Aug. 13.—Almost 100 head of Holstein cattle will be on display at the opening of the Southwest Washington fair, August 23, according to an announcement made by George R. Walker, secretary and manager.

For this reason it has been found necessary to do a certain amount of lobbying both in the state and national legislative bodies. Although the farm bureau is non-political in nature, yet the results which it is its purpose to bring about could not be gotten unless the necessary lobbying had been done.

Writer Sees Great Crops for Oregon

The crops, especially wheat and hay, look good all over Oregon, according to C. F. McIntosh, agricultural writer of the Oregon Agricultural college, who has just completed a tour of all sections of the state.

Prospects Bright For Fair at Yakima

Spokane, Wash., Aug. 13.—Ten per cent increase in wheat production in the state of Washington, or an increase of approximately 3,500,000 bushels during the next five years, was the goal set by county agricultural agents of Eastern Washington in a conference here recently.

Lincoln County to Hold Fair Earlier

Toledo, Or., Aug. 13.—The earliest county fair to be held in the state will be the Lincoln county fair at Toledo, September 8, 9 and 10. During the two years which the Lincoln county fair has been held the week preceding the state fair, difficulty has been caused by the general features of the state fair.

Attend Rattle Meeting

Chehalis, Wash., Aug. 13.—A. J. Rainey, the Rhode Island Red poultryman on Jullius Meier's ranch, is attending the Northwest Poultry association meeting at Seattle.

THRESHING MACHINES DELIVERED
Kelso, Wash., Aug. 13.—Threshing machines have been delivered to Charles Jabusch of this city and to G. J. Poyasky, William Jarvi and Otis Shepardson of Mount St. Helens.

POULTRY NOTES

Professor A. G. Lunn, acting head of the department of poultry husbandry, Oregon Agricultural college, has been in Seattle, where he took part in the American Poultry association meetings.

The number of chickens on farms in the United States on January 1, 1920, according to the fourteenth census, was 359,537,385. Of this number only 2,500,123 were on Oregon farms, surely showing that there is much room for the development of poultry in this state.

Get ready to exhibit your best fowls at the fall fairs and shows. After you have made an exhibit and won, then advertise and you will find buyers in plenty.

Poultry demonstrations are being held in many counties throughout the state. Most anyone can learn a few things by attending one or more of these demonstrations.

Clatsop Guernsey Cattle Clubmen to Gather August 17

The Clatsop County Guernsey Cattle club has designated August 17 as Guernsey day in the county and plans to hold a dairy picnic on the David Tagg farm on Clatsop plains between Warrenton and Seaside to fete the Guernsey breed.

The committee in charge intends to make the picnic of the Guernsey variety, as a stimulus for the breeding of better cattle. Noted breeders of the Northwest will be invited to attend this event.

At this picnic will be held the annual meeting of the Clatsop County Guernsey Cattle club and officers for the coming year will be elected. There also will be a stock judging contest open to young and old. Prizes will be offered to the persons making the two highest scores in this contest.

10 Per Cent Gain in Wheat Output Goal

Spokane, Wash., Aug. 13.—Ten per cent increase in wheat production in the state of Washington, or an increase of approximately 3,500,000 bushels during the next five years, was the goal set by county agricultural agents of Eastern Washington in a conference here recently.

Prospects Bright For Fair at Yakima

Spokane, Wash., Aug. 13.—Farmers of the district bounded by Wenatchee, Okanogan, and Lincoln counties are getting together to put over an irrigation project that is expected to be a close rival of the present Wenatchee and Yakima projects.

Lincoln County to Hold Fair Earlier

Toledo, Or., Aug. 13.—The earliest county fair to be held in the state will be the Lincoln county fair at Toledo, September 8, 9 and 10. During the two years which the Lincoln county fair has been held the week preceding the state fair, difficulty has been caused by the general features of the state fair.

Attend Rattle Meeting

Chehalis, Wash., Aug. 13.—A. J. Rainey, the Rhode Island Red poultryman on Jullius Meier's ranch, is attending the Northwest Poultry association meeting at Seattle.

THRESHING MACHINES DELIVERED
Kelso, Wash., Aug. 13.—Threshing machines have been delivered to Charles Jabusch of this city and to G. J. Poyasky, William Jarvi and Otis Shepardson of Mount St. Helens.

FAIR PROGRAM IS ANNOUNCED

Chehalis, Wash., Aug. 13.—The program for the Southwest Washington fair, to be held August 23 to 27, according to the announcement of Secretary and Manager George R. Walker, is as follows:

Monday, August 22, Children's day and Arrangement day. No admission will be charged.

Tuesday, August 23, South Bend, Raymond and all points on South Bend branch line; also Cowlyts county day.

Wednesday, August 24, Tacoma, Seattle, Portland, and all points north of Centralia.

Thursday, August 25, Governor's day; also Olympia, Aberdeen, Hoquiam and all points on Grays harbor; also Elks' day.

Friday, August 26, Centralia-Chehalis day; Tono and Ford's Prairie day.

Saturday, August 27, Lewis county day; Pure Breeders' and Automobile day; Harness races are arranged for Tuesday, Wednesday, Thursday and Friday afternoon, with prizes ranging from \$100 to \$500 per race.

The superintendents of the various departments of the fair met with the members of the Chehalis Citizens' club at luncheon Monday noon and the subject of the hour's discussion was the local fair in its different phases.

The new stock barn, built by N. C. Sears, was dedicated Wednesday. The new barn will give room for 300 head of cattle more than has heretofore been cared for, besides other equipment; this allows the fair organizers to handle a breeding pure bred Jerseys; N. C. Sears of Winlock, who built the new barn; F. S. Stinson of the Hollywood farms, Seattle; Stanley Butcher, secretary of the Holstein organization; and the address of dedication of the new barn was made by William Bishop of Chalmers.

Greater Wenatchee Project Is Revived; Farmers Organize

Spokane, Wash., Aug. 13.—Farmers of the district bounded by Wenatchee, Okanogan, and Lincoln counties are getting together to put over an irrigation project that is expected to be a close rival of the present Wenatchee and Yakima projects.

The Greater Wenatchee project is to be a small successor to the Quincy-Lake Wenatchee plan, proposed about 10 years ago and abandoned in the face of expensive costs. The Greater Wenatchee project will embrace 46,000 acres, with about 6000 acres accessible by pumping.

O. A. C. Husbandry Head Visits East, Inspecting Poultry

Professor James Dryden, head of the department of poultry husbandry at O. A. C., has just finished a trip through Pennsylvania, Washington, D. C. and New York, studying poultry conditions and quality of fowls in that section of the country, preparatory to writing an article for the Country Gentleman.

Goat Sells For \$2000

A mohair Angora goat sold recently at De Rig's auction, near Bob Davis' bought; the animal from J. A. Ward. Both men are prominent livestock breeders.

THRESHING MACHINES DELIVERED
Kelso, Wash., Aug. 13.—Threshing machines have been delivered to Charles Jabusch of this city and to G. J. Poyasky, William Jarvi and Otis Shepardson of Mount St. Helens.

TANGIER PEAS WELFARE FARMERS MUST ADAPTED TO OREGON GROW MORE FOOD

By H. B. Shawe
Oregon Agricultural College Experiment Station, Corvallis, Aug. 13.—The Tangier pea, a new and heavy producing silage crop in the Pacific Northwest, has proved well adapted to this region.

The Tangier pea is an annual legume, originally imported from Tangier, North Africa, and is similar in a general way to the garden sweet pea and vetches but is much more vigorous in growth and chooses out weeds perfectly.

A supply of seed was obtained from the United States department of agriculture for experimental work at the Oregon station in 1917 and the resulting crops have more than come up to expectations.

Best results were obtained by seeding at the rate of 15 to 20 pounds an acre, used alone or 30 pounds of the Tangier pea with a bushel of winter cereal, the best results coming from the use of oats.

The soil best adapted to Tangier pea culture should be drained, rich and loamy and the seed bed should receive liberal fertilization.

Harvesting not difficult
Growth is so thick that visitors have expressed doubt about the ease of harvesting the crop. No trouble was found in cutting the crop with a mower and the swath is rolled back after the mower to clear the way for the next row.

Experiments are being made, by selection to get a strain of the Tangier pea that will not shatter as badly as the one now in use does. In spite of the inclination to shatter on the part of the crop, the yield is so high that the Oregon station has been in excess of 20 bushels to the acre.

Harvesting conditions for Tangier peas and hay are similar to conditions that govern harvesting vetch except that it is advised to make the cocks very large, at least 100 to 150 pounds when cut for seed but smaller for hay.

Grays Harbor Fair Outlook Promising
Chehalis, Wash., Aug. 13.—The Grays Harbor county fair, to be held in Elma, August 23 to 27, promises to be of exceptional interest this year.

Grays Harbor Fair Outlook Promising
Chehalis, Wash., Aug. 13.—The Grays Harbor county fair, to be held in Elma, August 23 to 27, promises to be of exceptional interest this year.

Grays Harbor Fair Outlook Promising
Chehalis, Wash., Aug. 13.—The Grays Harbor county fair, to be held in Elma, August 23 to 27, promises to be of exceptional interest this year.

Grays Harbor Fair Outlook Promising
Chehalis, Wash., Aug. 13.—The Grays Harbor county fair, to be held in Elma, August 23 to 27, promises to be of exceptional interest this year.

Grays Harbor Fair Outlook Promising
Chehalis, Wash., Aug. 13.—The Grays Harbor county fair, to be held in Elma, August 23 to 27, promises to be of exceptional interest this year.

Grays Harbor Fair Outlook Promising
Chehalis, Wash., Aug. 13.—The Grays Harbor county fair, to be held in Elma, August 23 to 27, promises to be of exceptional interest this year.

Grays Harbor Fair Outlook Promising
Chehalis, Wash., Aug. 13.—The Grays Harbor county fair, to be held in Elma, August 23 to 27, promises to be of exceptional interest this year.

Grays Harbor Fair Outlook Promising
Chehalis, Wash., Aug. 13.—The Grays Harbor county fair, to be held in Elma, August 23 to 27, promises to be of exceptional interest this year.

Grays Harbor Fair Outlook Promising
Chehalis, Wash., Aug. 13.—The Grays Harbor county fair, to be held in Elma, August 23 to 27, promises to be of exceptional interest this year.

Grays Harbor Fair Outlook Promising
Chehalis, Wash., Aug. 13.—The Grays Harbor county fair, to be held in Elma, August 23 to 27, promises to be of exceptional interest this year.

Grays Harbor Fair Outlook Promising
Chehalis, Wash., Aug. 13.—The Grays Harbor county fair, to be held in Elma, August 23 to 27, promises to be of exceptional interest this year.

Grays Harbor Fair Outlook Promising
Chehalis, Wash., Aug. 13.—The Grays Harbor county fair, to be held in Elma, August 23 to 27, promises to be of exceptional interest this year.

Grays Harbor Fair Outlook Promising
Chehalis, Wash., Aug. 13.—The Grays Harbor county fair, to be held in Elma, August 23 to 27, promises to be of exceptional interest this year.

Grays Harbor Fair Outlook Promising
Chehalis, Wash., Aug. 13.—The Grays Harbor county fair, to be held in Elma, August 23 to 27, promises to be of exceptional interest this year.

Grays Harbor Fair Outlook Promising
Chehalis, Wash., Aug. 13.—The Grays Harbor county fair, to be held in Elma, August 23 to 27, promises to be of exceptional interest this year.

Increased transportation costs and lessened returns from the products they have to sell will compel thousands of American farmers to grow more of their own food, in the opinion of officials of the United States department of agriculture.

These transportation costs will prevent shipments of the more moderate priced fruits and vegetables which are purchased by the growers of single crops or specialties for use in their own homes, and the lack of a market for special products in turn will be a blow to the buying capacity of the growers of those specialties.

The American farmer is not going to be able this year to pay freight on water, said a department official. Water makes up a large part of fresh fruits and vegetables. The answer is that he must grow his own table food.

Best results were obtained by seeding at the rate of 15 to 20 pounds an acre, used alone or 30 pounds of the Tangier pea with a bushel of winter cereal, the best results coming from the use of oats.

The soil best adapted to Tangier pea culture should be drained, rich and loamy and the seed bed should receive liberal fertilization.

Harvesting not difficult
Growth is so thick that visitors have expressed doubt about the ease of harvesting the crop. No trouble was found in cutting the crop with a mower and the swath is rolled back after the mower to clear the way for the next row.

Experiments are being made, by selection to get a strain of the Tangier pea that will not shatter as badly as the one now in use does. In spite of the inclination to shatter on the part of the crop, the yield is so high that the Oregon station has been in excess of 20 bushels to the acre.

Harvesting conditions for Tangier peas and hay are similar to conditions that govern harvesting vetch except that it is advised to make the cocks very large, at least 100 to 150 pounds when cut for seed but smaller for hay.

Grays Harbor Fair Outlook Promising
Chehalis, Wash., Aug. 13.—The Grays Harbor county fair, to be held in Elma, August 23 to 27, promises to be of exceptional interest this year.

Grays Harbor Fair Outlook Promising
Chehalis, Wash., Aug. 13.—The Grays Harbor county fair, to be held in Elma, August 23 to 27, promises to be of exceptional interest this year.

Grays Harbor Fair Outlook Promising
Chehalis, Wash., Aug. 13.—The Grays Harbor county fair, to be held in Elma, August 23 to 27, promises to be of exceptional interest this year.

Grays Harbor Fair Outlook Promising
Chehalis, Wash., Aug. 13.—The Grays Harbor county fair, to be held in Elma, August 23 to 27, promises to be of exceptional interest this year.

Grays Harbor Fair Outlook Promising
Chehalis, Wash., Aug. 13.—The Grays Harbor county fair, to be held in Elma, August 23 to 27, promises to be of exceptional interest this year.

Grays Harbor Fair Outlook Promising
Chehalis, Wash., Aug. 13.—The Grays Harbor county fair, to be held in Elma, August 23 to 27, promises to be of exceptional interest this year.

Grays Harbor Fair Outlook Promising
Chehalis, Wash., Aug. 13.—The Grays Harbor county fair, to be held in Elma, August 23 to 27, promises to be of exceptional interest this year.

Grays Harbor Fair Outlook Promising
Chehalis, Wash., Aug. 13.—The Grays Harbor county fair, to be held in Elma, August 23 to 27, promises to be of exceptional interest this year.

Grays Harbor Fair Outlook Promising
Chehalis, Wash., Aug. 13.—The Grays Harbor county fair, to be held in Elma, August 23 to 27, promises to be of exceptional interest this year.

Grays Harbor Fair Outlook Promising
Chehalis, Wash., Aug. 13.—The Grays Harbor county fair, to be held in Elma, August 23 to 27, promises to be of exceptional interest this year.

Grays Harbor Fair Outlook Promising
Chehalis, Wash., Aug. 13.—The Grays Harbor county fair, to be held in Elma, August 23 to 27, promises to be of exceptional interest this year.

Grays Harbor Fair Outlook Promising
Chehalis, Wash., Aug. 13.—The Grays Harbor county fair, to be held in Elma, August 23 to 27, promises to be of exceptional interest this year.

Grays Harbor Fair Outlook Promising
Chehalis, Wash., Aug. 13.—The Grays Harbor county fair, to be held in Elma, August 23 to 27, promises to be of exceptional interest this year.

Grays Harbor Fair Outlook Promising
Chehalis, Wash., Aug. 13.—The Grays Harbor county fair, to be held in Elma, August 23 to 27, promises to be of exceptional interest this year.

Grays Harbor Fair Outlook Promising
Chehalis, Wash., Aug. 13.—The Grays Harbor county fair, to be held in Elma, August 23 to 27, promises to be of exceptional interest this year.

Bordeaux Spray Recommended for All Apple Trees

Flood River, Aug. 13.—Local experiment station experts recommend the application of the Bordeaux spray on all apple trees, especially those infected with anthracnose. It is said that the most convenient plan for spraying large orchards is to have two elevated tanks at such height that their contents can be run into the spray tanks through pipes which should be large enough to fill quickly.

This arrangement necessitates a platform level with the top of the tanks where the lime may be slacked and the vitriol dissolved in other tanks or barrels and then easily run into the tanks for the diluted solutions.

For small orchards, a large mortar box should be provided built to suit the amount of lime needed, and should be large enough so that the mortar will not be more than eight to 10 inches deep. Plenty of mortar should be used and care taken that the lime is not burned.

The amount of Bordeaux mixture to be used should be known and but a small amount stirred at once. It will take the lime at least a week to slack, and then the water should be drained off and the lime checked in squares so that each square will represent the number of pounds of lime required to make a spray.

Best grade of lime should be used and if slacked several days ahead of time, all particles will slack down to a paste, and may easily be put through a No. 10 sieve. The water used in mixing vitriol and lime water, the lime should be put first into the tank unless both can be run in together.

Prosperity Advent Seen When Farmers Pay Water Charges

Yakima, Aug. 13.—As an indication that farmers are getting in a better financial condition as the returns from the crops come in, Floyd Foster, secretary of the Yakima Water Users' association, reports that in one day he took in over \$1100 in payment of construction, operation and maintenance charges. This is more money in one day than he received in the whole month of July, when he reports collections amounted to only \$719.57.

Since January the water users have been paying penalty of 1 per cent a month on their delinquent accounts. There is \$30,000 still due from water users and it is expected that payments will be heavy during the next two months.

Woolgrowers Meet To Plan Marketing Of Season's Clip

The members of the Oregon Wool and Mohair Growers' Cooperative association in Lincoln county, together with other interested wool and mohair men, are holding a meeting at Harlan to complete arrangements for shipping wool to the association.

Association organization work has just started in Lincoln county and wool growers generally are anxious to join the association in order to market their wool in a businesslike manner. No offers have been received in local wool, and county buyers are not operating. The association offers the best and only marketing solution left to wool growers this year, the association claims.

The Oregon association now has over 1700 members and over 350,000 sheep and goats signed up.

TAKES OVER CREAMERY

Emile Christensen of Portland, senior in dairy husbandry at the Oregon Agricultural college creamery during the summer vacation period, he is making 700 pounds of butter a day. He is making ice, ice cream, and doing the executive work. Milt Miller of Corvallis is handling dairy products—milk, cheese, buttermilk—and selling ice cream to customers.

HAS FINE HERD

Corbett, Or., Aug. 13.—Karl Hanne-man, a local breeder of registered Jerseys, has now a fine herd, consisting of 12 high priced cows.

LECTURES ON BEES

Kelso, Wash., Aug. 13.—State Bee Inspector Slocum has been spending a week looking after bees in the Oak Point district. He also gave a lecture and instruction upon bee culture at Kelso.

INSPECT EXPERIMENT STATION

Baker, Aug. 13.—J. K. Weatherford of Albany, president of the state board of regents of the O. A. C.; C. L. Hawley, state dairy and food commissioner; Senator Walter M. Pierce of La Grande; Jefferson Myers of Portland; James Jarvie, director of the experiment station and C. J. McIntosh of the O. A. C., are making an inspection tour of the agriculture experiment station located in this section of the state.

INSPECT EXPERIMENT STATION
Baker, Aug. 13.—J. K. Weatherford of Albany, president of the state board of regents of the O. A. C.; C. L. Hawley, state dairy and food commissioner; Senator Walter M. Pierce of La Grande; Jefferson Myers of Portland; James Jarvie, director of the experiment station and C. J. McIntosh of the O. A. C., are making an inspection tour of the agriculture experiment station located in this section of the state.

BETTER FARMING

FARM VOCATIONAL EDUCATION DISCUSSED

Oregon Agricultural College, Corvallis, Aug. 13.—Conferences for instructors of vocational agriculture in high schools, with the staff of the school of vocational education have been held here. School superintendents, principals and board members interested in vocational agriculture, attended.

Features of the conference were stock judging contests, an address by J. A. Churchill, state superintendent of public instruction, discussions of organization problems, and a banquet at Waldo hall. E. E. Elliott, director and supervisor of agriculture in the Salem schools; E. D. Duxon, instructor in agricultural education, O. A. C.; E. D. Resler, dean of the school of vocational education; Borden F. Beck, Redmond; C. D. Thompson, Medford, and O. L. Paulson, Alsea, presided at the meetings.

U. S. Standards for Corn Are Changed

A change in the official grain standards of the U. S. for shelled corn has been made. The size of the perforations in the screens used for determining foreign material and cracked corn is fixed at twelve sixty-fourths of an inch instead of fourteen sixty-fourths of an inch.

This change was taken after a thorough investigation which disclosed the fact that larger holes permitted a considerable percentage of small whole kernels and half sized pieces of broken kernels of corn, which are entirely suitable for milling and feeding purposes, to pass through the screens.

Billion Killed, But Many More Remain

Bend, Aug. 13.—Almost a billion grasshoppers have been killed with arsenic poisoning at Crane Prairie, but the district is still thickly populated. The dead are strewn over 200 acres. Arsenic has been declared until just before egg laying time, as the hatching season is still on and extermination is difficult on account of steady migration.

County Agriculturalist D. L. Jamison is in command of the attacking force.

SUNNYSLOPE ACREAGE SOLD

Wenatchee, Aug. 13.—J. N. McCleary has sold 40 acres in Sunnyslope, adjoining the property of the American Fruit Growers, to C. M. Francis of Wenatchee. Thirty-four acres of the tract are in 10 to 12-year-old apple trees. The varieties are Winesaps, Spitzenbergs, Delicious and Jonathans. There is a five room modern home on the place, well as a barn and packing shed. It is under the high line canal.

SOIL SURVEY PROMISED

Eugene, Aug. 13.—A soil survey will be made of Lane county by experts from the Oregon Agricultural college, according to a promise received from that institution by Melvin Hansen, president of the Eugene realty board.

THE BERGMANN SHOE TRADE MARK PORTLAND, ORE.

HIGH-GRADE SHOES FOR ALL WORKERS

If you want dry feet ask for Bergmann Water-Proof Shoe Oil. Ask your dealer or write us for catalogue.

THEO. BERGMANN MFG. CO. 221 THURMAN ST. PORTLAND, OR.

SASH and DOORS O. B. WILLIAMS CO.

1923 FIRST AVE. SO. SEATTLE CHICKEN HOUSE SASH 20 in. Wide by 25 in. High. 93c A dozen different sizes in stock for immediate shipment.</