

PACKING INTERESTS LOOKING FOR LOW CANNED SALMON PRICE NEW HOME OF OREGON NAVAL RESERVISTS

BUTTER MARKET

Both sugar and flour are being sold by some of the downtown markets at lower prices than is ruling at wholesale. This is due to the efforts of the retailers to utilize both of these items as "bait" to secure trade in other departments of their store.

MARKET BASKET

Both sugar and flour are being sold by some of the downtown markets at lower prices than is ruling at wholesale. This is due to the efforts of the retailers to utilize both of these items as "bait" to secure trade in other departments of their store.

PUBLIC WORKS

By Hyman H. Cohen With the opening of the Columbia river salmon season comes the annual dispute between fishermen and packers regarding the price. The packers this season offered 30¢ a pound for Chinook, as compared with 25¢ a year ago.

WHEAT BOOMS HIGHER

Wheat bids went to a new high record for the present movement on the Portland market, exchange with rises of 2 to 4 cents a bushel. Bids were, for Monday: Hard white... 1.28 3/4 Soft white... 1.28 3/4 White club... 1.28 3/4

LIMITED SUPPLY BOOSTS LIVESTOCK

MONDAY LIVESTOCK TRADE. Hogs Steers Lambs Portland... \$10.80 \$8.25 \$8.25 Chicago... 8.50 9.25 11.00 Kansas City... 8.00 8.50 10.50 Denver... 7.50 8.25 10.25

MONDAY DAIRY TRADE

Butter Eggs Cheese Portland... 22c 22c 22c Chicago... 21c 21c 21c Kansas City... 20c 20c 20c Denver... 19c 19c 19c

EGG TRADE IS MARKING TIME

Practically no change was shown in the egg market situation here in the week ending May 1. While receipts are decreasing the lack of demand from stores is keeping a surplus in sight all the time.

Strike News Now Vital in Cotton

New York, May 2.—(I. N. S.)—The cotton market had another slow opening today. Pending the news of the strike of the American coal miners and the German reparations matter, the market was generally inactive.

Strength in Corn Is Wheat Aid; Early Rise Made

Chicago, May 2.—(I. N. S.)—Grains finished with sharp gains for the day, although sales late carried prices down from the high marks recorded yesterday.

Standard Oil Stocks

Standard Oil Stocks Closing Asked. Anglo... 100 100 100.00. B. & O. Ind... 100 100 100.00. C. & G. Ind... 100 100 100.00.

WHOLESALE PRICES IN PORTLAND

These are prices retailers pay wholesalers, exclusive of charges. Butter... 22c. Eggs... 22c. Flour... 22c.

POTATOES ALONG THE COAST

Seattle, May 2.—(I. N. S.)—Potatoes... 10c. Onions... 10c. Carrots... 10c.

NEW YORK BUTTER AND EGGS

New York, May 2.—(I. N. S.)—Butter... 22c. Eggs... 22c.

AMERICAN WHEAT VISIBLE

American wheat visible in bushels: May 2... 1,833,000. May 3... 1,833,000.

MINNEAPOLIS DRAINING

Minneapolis, Minn., May 2.—(I. N. S.)—Rain... 1.28 3/4.

Some Hens Are These; Overtime Laying Reported

Sandy, May 2.—A few days ago three hens of the Rhode Island variety, belonging to Mrs. Blanche B. Nicely, ex-mayor of Sandy, laid five eggs, two of which contained fertilized yolks.

SEATTLE FIREMAN ON TUG IS SCALDED TO DEATH

Sheboygan, Wis., May 2.—(U. P.)—Madi Karhunen, 30, Seattle, Wash., perished on a tug boat here Saturday night.

NEW YORK METAL MARKET

New York, May 2.—(I. N. S.)—Wool... 1.28 3/4.

NEW YORK SUGAR FUTURES

New York, May 2.—(I. N. S.)—Sugar... 1.28 3/4.

Positions of Vessels

Radio reports from North Head give the positions of the following vessels: Captain A. F. Lucas, Richmond for Willberg, 10 miles from Astoria.

MONDAY DAIRY TRADE

Butter Eggs Cheese Portland... 22c 22c 22c Chicago... 21c 21c 21c Kansas City... 20c 20c 20c Denver... 19c 19c 19c

EGG TRADE IS MARKING TIME

Practically no change was shown in the egg market situation here in the week ending May 1. While receipts are decreasing the lack of demand from stores is keeping a surplus in sight all the time.

Strength in Corn Is Wheat Aid; Early Rise Made

Chicago, May 2.—(I. N. S.)—Grains finished with sharp gains for the day, although sales late carried prices down from the high marks recorded yesterday.

Standard Oil Stocks

Standard Oil Stocks Closing Asked. Anglo... 100 100 100.00. B. & O. Ind... 100 100 100.00. C. & G. Ind... 100 100 100.00.

AMERICAN LIVESTOCK PRICES

Chicago, May 2.—(I. N. S.)—Hogs... 8.50. Steers... 9.25. Lambs... 11.00.

WHOLESALE PRICES IN PORTLAND

These are prices retailers pay wholesalers, exclusive of charges. Butter... 22c. Eggs... 22c. Flour... 22c.

POTATOES ALONG THE COAST

Seattle, May 2.—(I. N. S.)—Potatoes... 10c. Onions... 10c. Carrots... 10c.

NEW YORK BUTTER AND EGGS

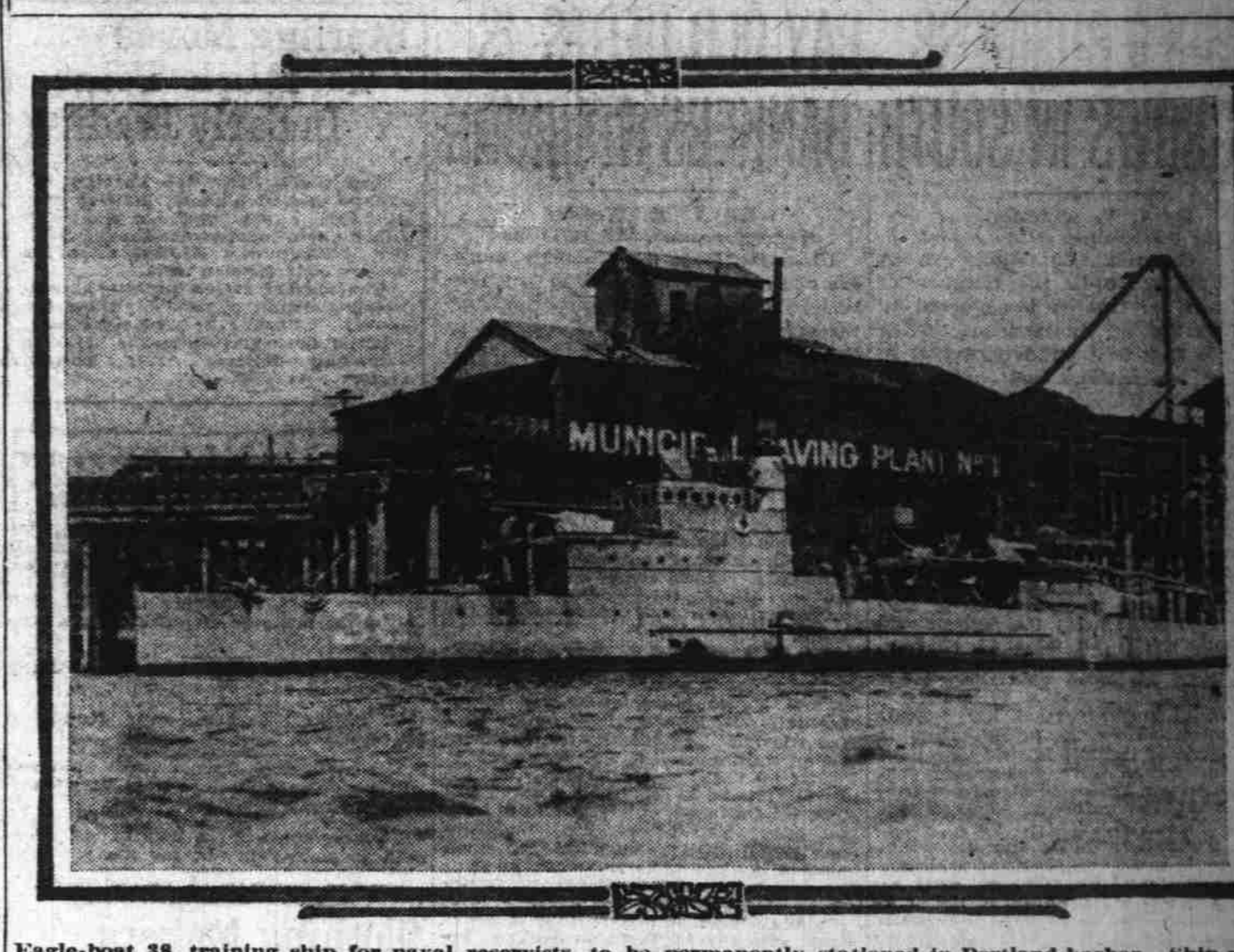
New York, May 2.—(I. N. S.)—Butter... 22c. Eggs... 22c.

AMERICAN WHEAT VISIBLE

American wheat visible in bushels: May 2... 1,833,000. May 3... 1,833,000.

MINNEAPOLIS DRAINING

Minneapolis, Minn., May 2.—(I. N. S.)—Rain... 1.28 3/4.



Eagle-bon 38, training ship for naval reservists, to be permanently stationed in Portland harbor. Ship will be used for making week end cruises on Columbia river.

WHEAT OPEN, STR. COAST UNLOADING

May shipments opened up with the clearance of the steamship Meantico with 252,097 bushels of wheat valued at \$368,333. The grain was laden by Kerr, Gifford & Co. The vessel is bound for Genoa, Italy.

News of the Port

Arrivals May 2. Orlino, American steamer, from New York; Julia Luckenbach, American steamer, from Portland; Moresby, Dutch steamer, from Seattle, cargo of lumber and general.

NAVAL RESERVISTS CRAFT ROUGH TOP

After a rough and tempestuous trip "all hands and the ship's cook" of Eagle-bon 38 were glad to be lying alongside the dock at the foot of Jefferson street this morning. In the face of a 50-mile gale the little craft took considerable punishment and incidentally gave the crew a bit of it.

PLOW CO. HELD GUILTYLESS

The Oliver Chilled Plow works was discharged from responsibility this morning by Federal Judge Bean in the personal injury suit brought against it and the Pacific Steamship company by Harry Crane, a stevedore. Crane was injured during September, 1920, while loading a tug boat with a vessel in his suit he alleged that the manufacturer should have rated the digger so that its sharp knives could not have cut him.

HEARD ON LUMBER TRADES

An appeal for the United States shipping board to give attention to lumber being shipped out of the Northwest was contained in a message sent to W. B. Keene, assistant director of the board, by the chamber of commerce this morning.

DAILY RIVER READINGS

Table with columns for Stations, River, Height, and Temperature. Includes data for Astoria, Portland, and other river locations.

AT NEIGHBORING PORTS

Astoria, May 2.—Arrived—Left up at 2:30 a. m. Dutch steamer Monday, from Seattle. Arrived at 4:30 a. m. steamer J. J. Hinkley, from New York.

TANKER LUCAS IS AROUND; MAY FLOAT SHIP TODAY

Advices to the office of the Standard Oil company at Portland this morning stated that the tanker F. Lucas went aground off the For Stevens light at an early hour this morning. The captain reported that no damage had been sustained and it was expected that the vessel would be floated at high tide this afternoon.

CHARTER FIRM

New York, May 2.—(I. N. S.)—Opening charter for the week ending May 2 and little change in the situation from the past week. Charter rates are: Freight—Ocean (steam) grain, firm; 25¢ marks; France, 25 francs; Holland, 25-30 kronen; general cargo, firm; demand fair.

SMOKER IN CHURCH PLANNED

Vancouver, Wash., May 2.—The men of the 9th Cavalary will hold a smoker in the church basement this evening.

ALL ALONG THE WATERFRONT

With passengers and freight from San Francisco, the steamship Rose City will arrive up late this afternoon.

NEW YORK LONDON SILVER

New York, May 2.—(I. N. S.)—Commercial bar silver was quoted as follows: Domestic at 88¢; foreign, May 2.—(I. N. S.)—Bar silver at 84¢ higher today at 84 1/4.