

# Clearing of Logged-Off Land Simplified by Use of Modern Machinery

## HOMESEEKERS SEARCH FOR GOOD LOGGED-OFF LAND

Home-seekers are now focusing their attention upon the large areas in the West that are at present non-productive. These areas consist of logged-off lands, swamps and land that would be tillable if irrigated. Such lands have been lying dormant in the past as there has been no incentive to go to the expense of putting these lands under the plow.

With the dividing up and settling of most of the available farm lands, home-seekers are beginning to cast their eyes upon the land which is at present non-productive. The large amount of money required to put the unutilized lands under cultivation has been the main drawback to the development of such lands into profitable farms.

**LOGGED LAND OFTEN GOOD**  
Logged-off land has many natural advantages for the home builder. It presents but one problem to the settler and that is to get the land leveled.

Some of the richest land in the West is now lying non-productive because of the stumps which have in the past prevented such a big problem to the logged-off land owners. Some of this land has been seeded down and is good grazing land, while a big share of it is in heavy brush or fern which prevents the grass from growing to advantage.

**GOATS AID IN CLEARING**  
Goats will keep down the brush but unfortunately they can not be used to acquire a taste for stumps. True enough the stumps will rot out if given enough time and if the sprouts and brush are kept down meanwhile the brush will eventually be killed without much hard work being done on it.

**STATE WITHHELD AID**  
In Oregon, the state has provided for the guaranteeing of interests on bonds issued by irrigation and drainage districts, but as yet no assistance has been given owners of logged-off lands in financing projects to put their land under cultivation.

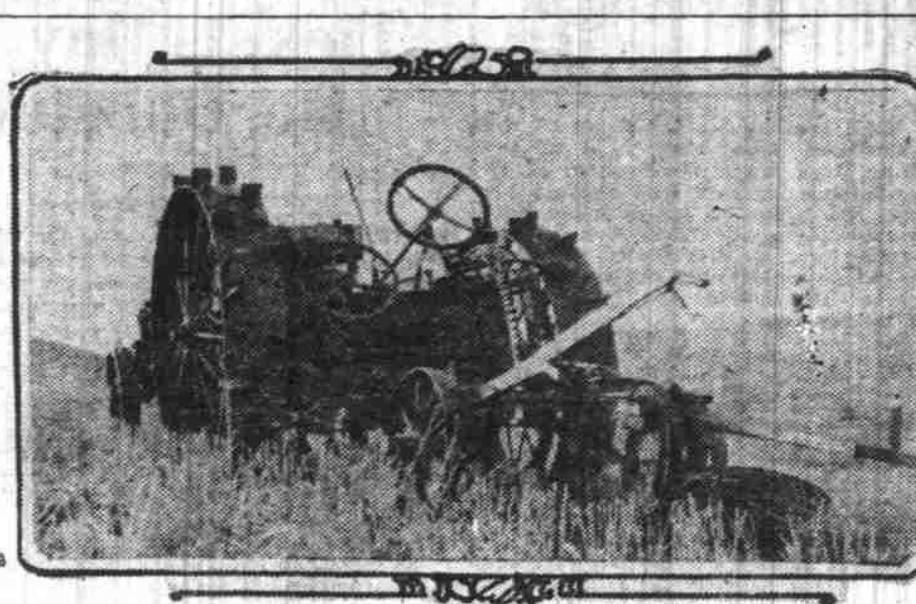
Logged-off lands are in most cases more easily improved than are swampy or dry lands. Swamp land in many cases must be cleared of stumps as well as ditched. Even after it is drained, the ditches require constant attention to keep the land in tilable condition.

**NEW METHODS HELP**  
The development of stump pullers and new methods of land clearing has made it possible to clear the cost of such projects. There are many hand power stump pullers upon the market which may be secured for a small sum, that are of great assistance in clearing the land.

**Hundreds of Farmers at Extension Course**  
The Dalles, Feb. 5.—Hundreds of farmers from all parts of the county braved the bad roads and came here for the extension courses presented during Farmers' week under the auspices of the county agriculturalist.

**Dealers Wanted**  
Our Land Plaster Sowers we make in large quantities. They will handle Nitrate of Soda, Phosphate and Potash, Lime in small quantities, also Ground Sulphur and other fertilizers.

## TRACTOR DOES HILL WORK



E. G. Adams of The Dalles has invented a tractor, which by an ingenious, simple mechanical arrangement can travel on the steepest hillside without slipping or losing power and with no possibility of turning over. The rear drive wheels are mounted on a movable stub axle which are controlled by a worm gear and pinions, at the will of the operator, the frame of the machine may be leveled in either direction on any hillside.

**DONKEY WILL AID IN AND CLEARING**  
Sedro Wooley, Wash., Feb. 5.—S. S. McIntyre of this city is the inventor of a donkey attachment for the Fordson tractor that promises to revolutionize methods in land clearing, road building and light logging.

The plant is a simple combination of the old donkey engine of two drums, and the Fordson power plant, the two being mounted on regular donkey engine skids. The range of power developed is from 3400 pounds at a speed of two miles an hour in high gear to 18,000 pounds at eight miles an hour. The haul-back unit develops a speed of 8 miles an hour in high, 3.2 miles in intermediate and 1.6 miles in low.

**WINTER BEE FOOD Formula Offered**  
H. A. Scullen, Oregon Agricultural College, offers a good substitute for the natural food of bee colonies, which need supplementary feeding at this time of the year.

**Lambs Wax Fat on Deschutes Alfalfa**  
Central Oregon lamb feeders are demonstrating that Deschutes alfalfa, poultry in combination with sunflower silage will make satisfactory gains on the average feeder lamb.

**New Era in Orchard Culture in Offing**  
Eugene, Feb. 5.—What is hoped will prove to be the beginning of a new era in orchard culture has been inaugurated in this section by Clayton L. Long, horticultural expert of the Oregon Agricultural college, who is conducting a series of orchard demonstrations in conjunction with the county agent as the fruit inspector.

**Scapoose Expert To Aid Fruit Men**  
Warren, Feb. 5.—Charles Koutek of Scapoose has been appointed fruit inspector for this district. Koutek is a fruit grower of some repute and has stated that he will wage war against the straggle in the orchards of this district.

**Portland Woman Named**  
Boardman, Or., Feb. 5.—Miss Frances Beebe, instructor in domestic science and art in the Boardman schools, resigned, and Mrs. Ida S. Mason of 410 Salmon street, Portland, was engaged to fill the vacant position.

## POULTRY BUSINESS GROWING RAPIDLY

By H. E. Cosby, Extension Poultry Specialist.  
A great many people are going into the poultry business in Oregon for the first time. The bulk of the increased production is perhaps due more to increases in established flocks than to the new flocks being started.

**31 HERDS STATE PASS DISEASE TEST**  
Bovine tuberculosis eradication has made rapid strides in Oregon, according to accredited herd list No. 3, which has just been issued by the department of agriculture.

**Dean Will Direct Cooperative Work At Wenatchee, Wn.**  
Wenatchee, Wash., Feb. 5.—M. L. Dean, director of the department of horticulture of the state of Washington, will be in Wenatchee soon to take up his work as organization manager of the Wenatchee District Cooperative association, recently organized.

**McArthur & Stauff Build Shedding Barn**  
McArthur & Stauff of Rickreall have just finished a shedding barn where their Jersey herd will be bedded and kept at night during wet weather.

**Winlock Man Plans To Hatch Thousands Of Chicks in Spring**  
Winlock, Wash., Feb. 5.—The first lot of chicks, 3500, made its appearance several days ago at the big hatchery owned by Jacob Erving.

**Ashland Fruit Men's Exhibit Wins Prize in Southern State**  
Whenver Ashland's famous fruit has been shown in any part of the country it has never failed to attract the most favorable attention.

**O. A. C. Professors To Speak at Bend**  
Arrangements have been completed for the holding of agricultural schools at Bend and Redmond during the week of January 24 to 28.

**Seek More Members**  
Kelo, Wash., Feb. 5.—The executive committee of the Cowlitz county farm bureau met with County Agent T. J. Blanton and planned for a publicity campaign and membership drive to be launched in the near future.

**Donkey's Buttermilk Starting Feed**  
Prevents the big losses and gives your chicks the quick, snappy get-away that produces early broilers. The Buttermilk Starting Feed is a complete and balanced ration for the first 30 days of a chick's life.

## 31 HERDS STATE PASS DISEASE TEST

Bovine tuberculosis eradication has made rapid strides in Oregon, according to accredited herd list No. 3, which has just been issued by the department of agriculture.

**Dean Will Direct Cooperative Work At Wenatchee, Wn.**  
Wenatchee, Wash., Feb. 5.—M. L. Dean, director of the department of horticulture of the state of Washington, will be in Wenatchee soon to take up his work as organization manager of the Wenatchee District Cooperative association, recently organized.

**McArthur & Stauff Build Shedding Barn**  
McArthur & Stauff of Rickreall have just finished a shedding barn where their Jersey herd will be bedded and kept at night during wet weather.

**Winlock Man Plans To Hatch Thousands Of Chicks in Spring**  
Winlock, Wash., Feb. 5.—The first lot of chicks, 3500, made its appearance several days ago at the big hatchery owned by Jacob Erving.

**Ashland Fruit Men's Exhibit Wins Prize in Southern State**  
Whenver Ashland's famous fruit has been shown in any part of the country it has never failed to attract the most favorable attention.

**O. A. C. Professors To Speak at Bend**  
Arrangements have been completed for the holding of agricultural schools at Bend and Redmond during the week of January 24 to 28.

**Seek More Members**  
Kelo, Wash., Feb. 5.—The executive committee of the Cowlitz county farm bureau met with County Agent T. J. Blanton and planned for a publicity campaign and membership drive to be launched in the near future.

**DUROCHOGS**  
Hargis Registered Yearling Herd Boar, Guaranteed Sire, 100 lbs., 10 months old. Price \$40.00.

## Industrial Movie Film to Educate Farmers on Feeding

An industrial moving picture film that is both interesting and deeply instructive has been booked to be shown in more than 400 of the leading showhouses in the West.

**Dean Will Direct Cooperative Work At Wenatchee, Wn.**  
Wenatchee, Wash., Feb. 5.—M. L. Dean, director of the department of horticulture of the state of Washington, will be in Wenatchee soon to take up his work as organization manager of the Wenatchee District Cooperative association, recently organized.

**McArthur & Stauff Build Shedding Barn**  
McArthur & Stauff of Rickreall have just finished a shedding barn where their Jersey herd will be bedded and kept at night during wet weather.

**Winlock Man Plans To Hatch Thousands Of Chicks in Spring**  
Winlock, Wash., Feb. 5.—The first lot of chicks, 3500, made its appearance several days ago at the big hatchery owned by Jacob Erving.

**Ashland Fruit Men's Exhibit Wins Prize in Southern State**  
Whenver Ashland's famous fruit has been shown in any part of the country it has never failed to attract the most favorable attention.

**O. A. C. Professors To Speak at Bend**  
Arrangements have been completed for the holding of agricultural schools at Bend and Redmond during the week of January 24 to 28.

**Seek More Members**  
Kelo, Wash., Feb. 5.—The executive committee of the Cowlitz county farm bureau met with County Agent T. J. Blanton and planned for a publicity campaign and membership drive to be launched in the near future.

**DUROCHOGS**  
Hargis Registered Yearling Herd Boar, Guaranteed Sire, 100 lbs., 10 months old. Price \$40.00.

## FARMERS' SCHOOL RESULTS WEGGED

By R. A. W.  
The Deschutes farmers' school closed Friday, January 28, with talks at Bend by Livestock Specialist Lindgren and County Agent Spillman, and a potato day at Redmond in charge of Professor Hyslop.

**Dean Will Direct Cooperative Work At Wenatchee, Wn.**  
Wenatchee, Wash., Feb. 5.—M. L. Dean, director of the department of horticulture of the state of Washington, will be in Wenatchee soon to take up his work as organization manager of the Wenatchee District Cooperative association, recently organized.

**McArthur & Stauff Build Shedding Barn**  
McArthur & Stauff of Rickreall have just finished a shedding barn where their Jersey herd will be bedded and kept at night during wet weather.

**Winlock Man Plans To Hatch Thousands Of Chicks in Spring**  
Winlock, Wash., Feb. 5.—The first lot of chicks, 3500, made its appearance several days ago at the big hatchery owned by Jacob Erving.

**Ashland Fruit Men's Exhibit Wins Prize in Southern State**  
Whenver Ashland's famous fruit has been shown in any part of the country it has never failed to attract the most favorable attention.

**O. A. C. Professors To Speak at Bend**  
Arrangements have been completed for the holding of agricultural schools at Bend and Redmond during the week of January 24 to 28.

**Seek More Members**  
Kelo, Wash., Feb. 5.—The executive committee of the Cowlitz county farm bureau met with County Agent T. J. Blanton and planned for a publicity campaign and membership drive to be launched in the near future.

**DUROCHOGS**  
Hargis Registered Yearling Herd Boar, Guaranteed Sire, 100 lbs., 10 months old. Price \$40.00.

## chutes county has more certified potato seed than all the other counties of Oregon combined.

Hyslop also spoke on the production of clover seed and stated that with hay at \$10 per ton, an acre of permanent pasture would make a greater financial return than a yield of three or four tons of alfalfa.

**Dean Will Direct Cooperative Work At Wenatchee, Wn.**  
Wenatchee, Wash., Feb. 5.—M. L. Dean, director of the department of horticulture of the state of Washington, will be in Wenatchee soon to take up his work as organization manager of the Wenatchee District Cooperative association, recently organized.

**McArthur & Stauff Build Shedding Barn**  
McArthur & Stauff of Rickreall have just finished a shedding barn where their Jersey herd will be bedded and kept at night during wet weather.

**Winlock Man Plans To Hatch Thousands Of Chicks in Spring**  
Winlock, Wash., Feb. 5.—The first lot of chicks, 3500, made its appearance several days ago at the big hatchery owned by Jacob Erving.

**Ashland Fruit Men's Exhibit Wins Prize in Southern State**  
Whenver Ashland's famous fruit has been shown in any part of the country it has never failed to attract the most favorable attention.

**O. A. C. Professors To Speak at Bend**  
Arrangements have been completed for the holding of agricultural schools at Bend and Redmond during the week of January 24 to 28.

**Seek More Members**  
Kelo, Wash., Feb. 5.—The executive committee of the Cowlitz county farm bureau met with County Agent T. J. Blanton and planned for a publicity campaign and membership drive to be launched in the near future.

**DUROCHOGS**  
Hargis Registered Yearling Herd Boar, Guaranteed Sire, 100 lbs., 10 months old. Price \$40.00.

**For a Record Crop - Plant DIAMOND QUALITY SEEDS**  
MAKE EVERY seed planted, and every acre cultivated, yield the biggest return. Diamond Quality Seeds are tested and adapted to the climatic and soil conditions of the Northwest.

**PORTLAND SEED CO. PORTLAND, OREGON**  
**OREGON MANUFACTURERS AND JOBBERS**  
**COLUMBIA DIGGER CO.**  
**ICE MACHINES**  
**ARMSTRONG'S McINTOSH ICE MACHINE CO.**  
**BARRELS AND CASKS**  
**DIES**  
**SPECIALTY MANUFACTURING**  
**SCREW MACHINE WORK**  
**C. M. M. C.**  
**PHOENIX IRON WORKS & FOUNDRY**  
**Rasmussen & Co. Paints and Varnish**  
**Pendleton Woolen Mills**  
**Pure Fleece Wool Blankets**  
**Portland Furniture Mfg. Co.**  
**KNIGHT'S SWEET INDIA RELISH**  
**KNIGHT PACKING CO.**