

\$2,549,965 WILL BE SOUGHT OF STATE FOR INSTITUTIONS

Salem, Nov. 25.—The state legislature will be asked to appropriate a total of \$2,549,965 for the maintenance of the 10 state institutions under the jurisdiction of the state board of control during the forthcoming biennium, according to estimates made public here Wednesday.

Table with 2 columns: Institution, Amount. Rows include: State hospital for the insane, \$985,625; State hospital for the feeble minded, \$327,450; State hospital for the blind, \$45,500; State hospital for the deaf, \$34,850; State hospital for the insane, \$112,850; State hospital for the feeble minded, \$327,450; State hospital for the blind, \$45,500; State hospital for the deaf, \$34,850.

PRUNINGS FREQUENT The prunings made by the board of control came largely on items of new buildings.

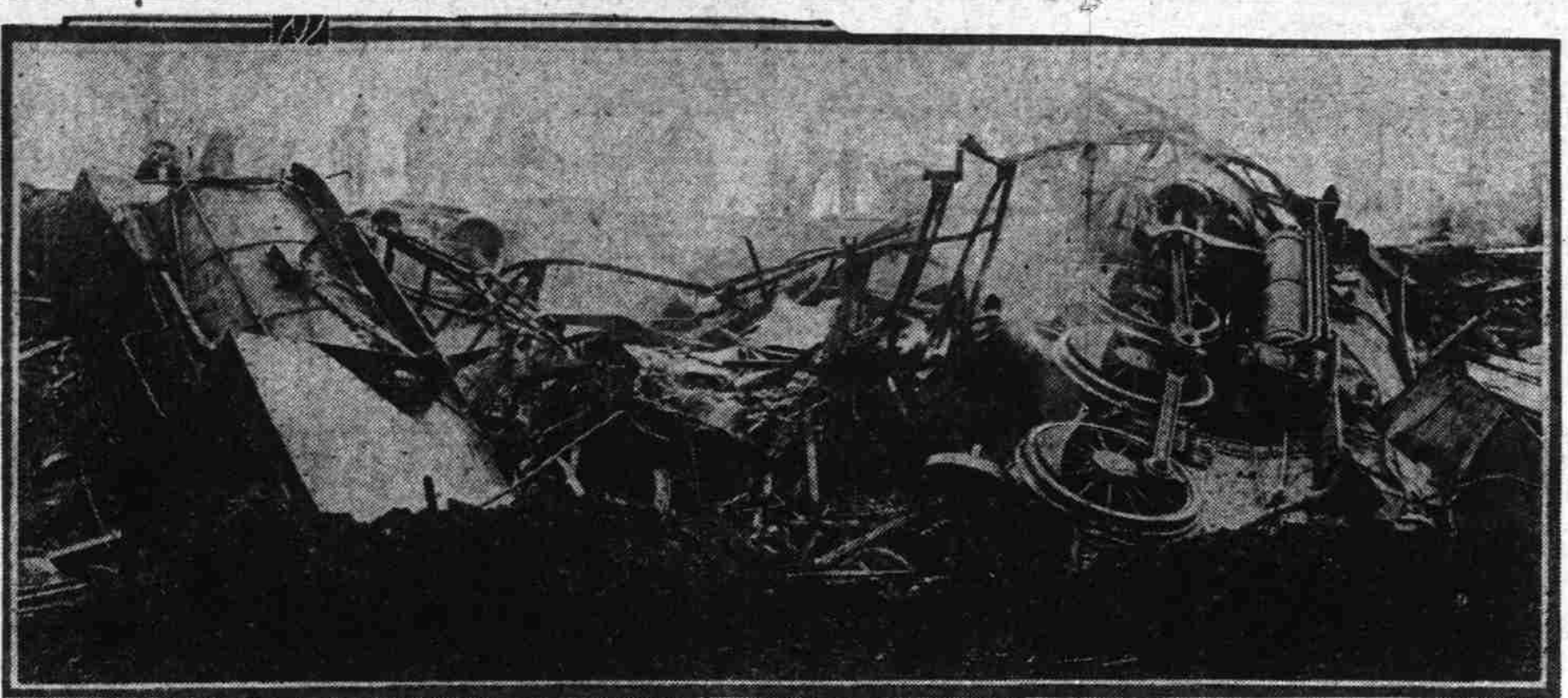
A request for \$160,000 for a new wing for the Eastern Oregon hospital for the insane fell by the wayside under the censorship of the board, which instead allowed an item of \$30,000 for completing a basement in which additional wards will be provided.

LOWER PRICES EXPECTED A request for \$4500 for a superintendent's cottage at the blind school was disallowed, as also was an item of \$25,000 for an industrial building at the school for the deaf, although the board makes a recommendation to the legislature that this building be granted to the school.

Reports Water Good Dr. L. D. Mars of the United States public health bureau has returned from The Dalles, where he has been investigating the water supply.

SCENE AT SOUTHERN PACIFIC WRECK NEAR SALEM Pictures show wrecked engine and tender of the through freight, which crashed into a local freight near the spot where the great Lake Labish wreck occurred 30 years ago.

SCENE AT SOUTHERN PACIFIC WRECK NEAR SALEM



Pictures show wrecked engine and tender of the through freight, which crashed into a local freight near the spot where the great Lake Labish wreck occurred 30 years ago.

TRAINMEN HURT IN WRECK IMPROVING

Salem, Or., Nov. 25.—A C. Strange of Portland, Southern Pacific freight conductor, whose left leg was amputated just below the knee Wednesday, following his injury in the wreck at Chemawa early that morning, is resting easy and his condition is not regarded as at all critical.

Noted Athlete Is Killed in Accident At Mill in Morton

Morton, Wash., Nov. 25.—W. E. Crumb, more generally known as Ellsworth, and as Buck among his close friends, was instantly killed Wednesday afternoon in the sawmill of the Tilton Valley Lumber company of Morton, Crumb, ratched after the last cants were dumped off the carriage onto the rolls, and as the carriage started on the return he apparently fell into the saws.

Papers Stolen in Scottsburg Found On Burglars' Trail

Roseburg, Nov. 25.—Notes, mortgages and valuable papers, amounting to several thousand, part of the loot taken from the safe in the J. N. Heddens store at Scottsburg, when burglars blew the safe and secured approximately \$30,000, were found hidden in the William Fisher barn, a few miles down the Unqua from Scottsburg.

Brownsville Is to Get Paving; Fight Of Factions Ends

Brownsville, Or., Nov. 25.—Since the recent city election, which turned on the question of paving and in which the pavers won, the factions have got together and a majority of the frontage on more than a mile is represented in petitions for paving of Main and Oak streets and several cross avenues.

LINNTON TO HAVE BOY SCOUT TROOP

The formation of a Boy Scout troop has been accepted as a settled fact in Linnton. At a public meeting Tuesday evening there was a good turnout of people interested and it is expected that Sinclair Wilson will be the scoutmaster.

Still Discovered On Kitchen Stove

Marshfield, Nov. 25.—Adolph Carpenter was arrested here by Policeman Parks for operating a still in his home. When the officer entered the house the still was on the kitchen stove in full operation and was being watched by Carpenter.

Modoc Indian to Face Federal Jury For Wife Murder

Early next spring the local federal court will be called upon to try a murder case originating on the Klamath Indian reservation, according to Chief Assistant United States Attorney Hall S. Lusk.

Indian's Neck Broken

Lewiston, Idaho, Nov. 25.—Andrew Fogarty, an Indian of Lapwai, whose neck was broken about 10 days ago in an automobile accident, suffered from paralysis of the hands.

OPEN CHANNEL IS NORTH PORTLAND NEED, SAYS REPORT

That an open channel form of improvement in North Portland would be preferable to the closed channel recommended by H. L. Gilbert, project engineer of the port of Portland, is asserted in a report today by W. G. Brown, engineer for the associated industries of North Portland.

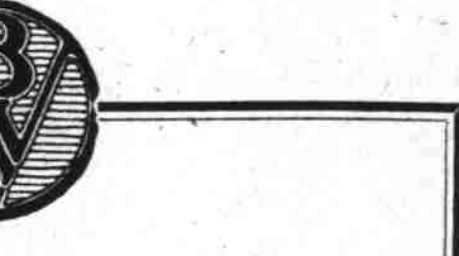
The matter of sewage disposal, the closed harbor would necessitate the immediate construction of intercepting and outfall sewers estimated to cost \$110,000, while with an open channel project no work of this kind is required.

SPED IS POSSIBLE

Protest against delay in the improvement of the North Portland harbor is contained in a resolution adopted by the Columbia River Loggers' Information bureau, composed of the principal logging operators in the Columbia river territory.

Attractive Yields Northwestern and Canadian Issues

Advertisement for Morris Brothers, Inc. featuring bonds from Vancouver, Washington (7% yield), Seaside, Oregon (7% to 7.50% yield), and Edmonton, Alberta Province (9% yield).



California hydro-electric securities are particularly fortified by the eminent fairness of that state's rate-fixing body—the California Railroad Commission.

Advertisement for Blyth, Witter & Co. featuring 10-year 8% collateralized secured bonds at 99 to net nearly 8.15%.

Advertisement for Climatic Conditions and Efficiency and Low Cost by F. W. Baltes & Company, Printers.

Advertisement for Admiral Line Pacific Steamship Company, featuring regular freight and passenger service to Coos Bay, Eureka, and San Francisco.

Advertisement for International Mercantile Marine Co. featuring American Lines (New York-Hamburg) and White Star Line (New York-Liverpool).

Advertisement for Toyo Kisen Kaisha (Nippon Yusen Kaisha) featuring freight and passenger service to Japan and China.

Advertisement for Norwegian America Line featuring direct routes to Scandinavia with sailings every three weeks.

Large advertisement for The First National Bank of Portland Oregon, stating it is the largest bank in the Pacific Northwest and has maintained this position through three generations.

Dose of Sheep Dip Fails Landon in Suicide Attempt Revolt of the stomach of George Landon, after it had been deluged with copious draughts of cresote sheep dip,

Publication of City Bureau Reports to Resume Next Year Publication of the annual reports of the city's several bureaus will be resumed next year, after discontinuing the practice for two years.

Advertisement for Overbeck & Cooke Co. featuring direct private wires to all exchanges and membership on the Chicago Board of Trade.

Advertisement for Warrenite Bitulithic by Warren Brothers Company.

Advertisement for French Line featuring service to Havre and Paris.

Advertisement for Astoria and Westway Lines featuring service to Str. Georgiana.