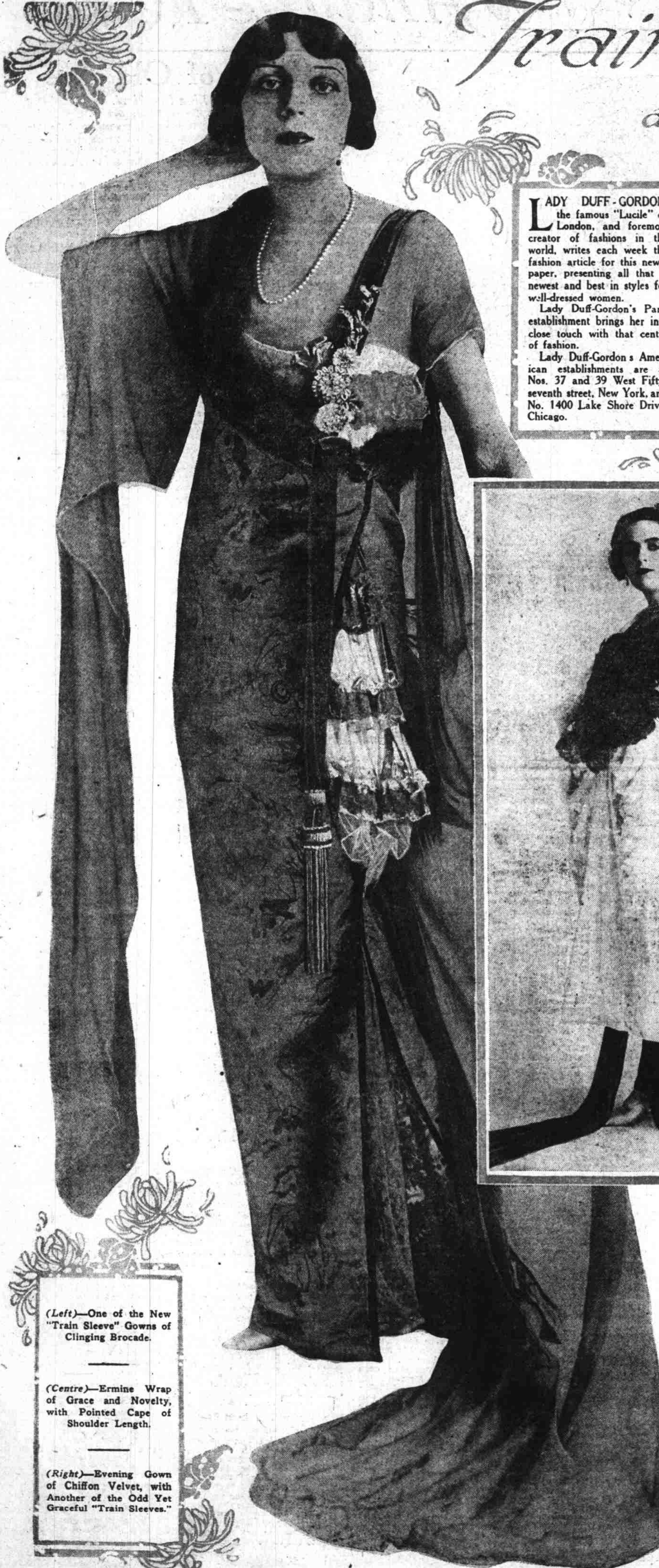


# Train~Sleeves and Ermine

by  
Lady  
Duff-  
Gordon

LADY DUFF-GORDON, the famous "Lucile" of London, and foremost creator of fashions in the world, writes each week the fashion article for this newspaper, presenting all that is newest and best in styles for well-dressed women. Lady Duff-Gordon's Paris establishment brings her into close touch with that centre of fashion. Lady Duff-Gordon's American establishments are at Nos. 37 and 39 West Fifty-seventh street, New York, and No. 1400 Lake Shore Drive, Chicago.



(Left)—One of the New "Train Sleeve" Gowns of Clinging Brocade.

(Centre)—Ermine Wrap of Grace and Novelty, with Pointed Cape of Shoulder Length.

(Right)—Evening Gown of Chiffon Velvet, with Another of the Odd Yet Graceful "Train Sleeves."

By Lady Duff-Gordon ("Lucile")

ONE of the oddest and yet most graceful fads of the present Autumn is what is known as the train sleeve. The train turned to account for the purpose of a sleeve takes the place of that ever graceful adjunct to a costume, the scarf. The large left-hand figure on this page will give you a clear idea of the utilization of the train for this new purpose. The gown, as you can see, is a scant, clinging one of brocade. The brocade is of silver. A slash at the side reveals the lace and ribbon of apparently intimate drapery. It may seem to the over-prudish a rather haughty conceit, yet is graceful and beautiful. The robe at its corsage line is finished with a band of skunk fur, which passes across the bust line over one shoulder and across the back, the two ends of the fur meeting at the side slightly above the waist line. A band of

black velvet ribbon passes across one shoulder, and is extended in a knee length ribbon. Taffeta flowers adorn the bodice where the velvet ribbon meets the fur. The scant silver brocade is drawn together at the knee, but again slashed. Now, as to the train sleeve. It gives the illusion of a scarf, yet it hangs from the band of skunk fur at the back in a long train of sweeping folds. It extends to floor length in front, having passed over one arm and being slightly caught beneath to hold it in place and serve its purpose as arm drapery. The right-hand figure shows an evening gown of chiffon velvet. This, too, has a train sleeve. In the centre I show you a handsome ermine wrap. The ermine is arranged in fully gathered lengthwise bands. Between these gathered bands are sewed flat strips of ermine. The black tails of the little animals are not used. This arrangement gives the wrap grace and novelty. Its grace is enhanced by a huge, pointed cape of shoulder length.