

"C. B. OF C'S" GREAT WORK WILL BE TOLD AT BIRTHDAY MEET

Public Welfare Bureau, as It Is Called Now, Was Formed 32 Years Ago to Help Needy.

By M. N. D.

A boy drops a pebble in a pool. The waves spread, ripple after ripple, until the whole surface is broken and the sunbeams dance where all was dark and still.

Thirty-two years ago, at a meeting of the Young People's society of the First Congregational church, which was then located at Second and Jefferson streets, the "City Board of Charities" was organized. Later it was incorporated as Associated Charities and since 1916 has been known as the Public Welfare Bureau.

The need of a municipal free employment agency was discovered through the work of the now, Public Welfare Bureau. It was a prominent factor in the organization of the Visiting Nurse association. Its executives had to do with the initial steps in the establishment of the public library.

Like a knight of old, the Public Welfare Bureau, armored with human sympathy and armed with contributions, has jostled with poverty in Portland. HUNDREDS CARED FOR

It cares for 300 to 500 families a month, dependent, of course, on season and circumstances. It follows comfortingly on the sad trail of desolation, ill health, unemployment and old age. Wherever it can win a family back into self support and independence it considers that its greatest work is done, for true charity aims not only to relieve need, but to remove the causes of poverty.

A long and honorable service record will be celebrated in the thirty-second birthday anniversary of the bureau in the parlors of the First Congregational church next Tuesday evening. Dinner will be served at 6:30 p. m. Many who have found in the big relief agency an outlet for their own generosity and solicitude for misfortune will attend. The invitation is open to all who make reservation by calling the Public Welfare Bureau at 544 courthouse.

WILL RELATE REMINISCENCES

The program will be divided into two sections. Beginning at 7:30 p. m., reminiscences of the past will be the subject of addresses by Thomas N. Strong, who was president from 1888 to 1912; L. N. Fieschner, who was president from 1912 to 1917; and Ben Selling, who was president from 1917 to 1920. The second section of the program will be devoted to an address on "The Present Situation and Prospects," by Bishop Walter Taylor Sumner, a member of the board of directors of the Public Welfare Bureau. Dr. T. L. Elliot, always active in the work, will preside. There are to be no requests for money and the meeting will adjourn at 9 p. m.

The story that George H. Himes, secretary of the Oregon Historical Society, tells of the organization of the City Board of Charities in 1888, reads like the story of the organization of the Community Chest today. He sent throughout the country for literature describing the best relief methods in use elsewhere and such experience as had accumulated in the administration of organized charity was made use of.

HELPED UNEMPLOYED

W. R. Walpole was for many years secretary of the bureau. The general secretary today is A. R. Gephart.

The paving of Jefferson street from Fourteenth to the city park was accomplished through a fund raised by the bureau in behalf of unemployed men during one hard winter. H. W. Corbett and W. S. Ladd, local financial leaders of another day, were especially generous contributors. One of the men who had been put to work came one day wearing only hat, shoes, trousers and a thin cotton shirt. Deeply touched, Thomas N. Strong, then president of the bureau, gave the man his overcoat. Part of the winter he was himself short of overcoats, for he gave three more away to men in similar circumstances.

HELPED REFUGEES

At the time of the San Francisco earthquake in 1906, 5000 refugees were sent to Portland and were here cared for by an emergency organization directed by the bureau. One of the pathetic sights of that experience was the nondescript crowds of dazed and frightened people around the doors where meal tickets were issued.

The main objectives of the Public Welfare Bureau as it is now constituted are:

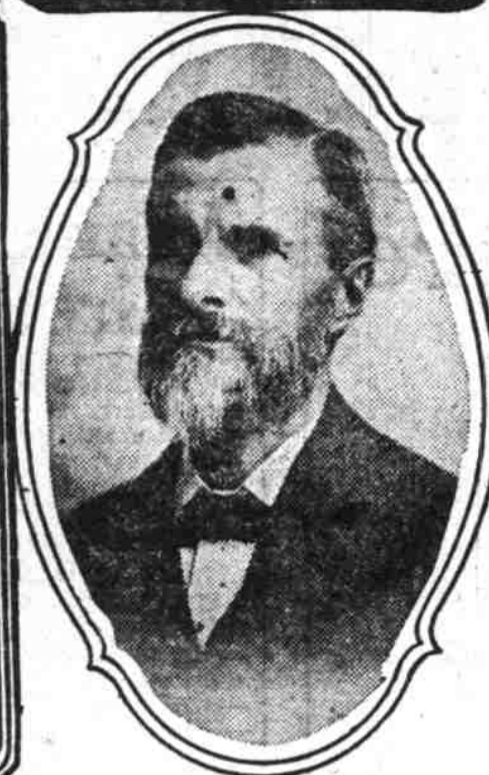
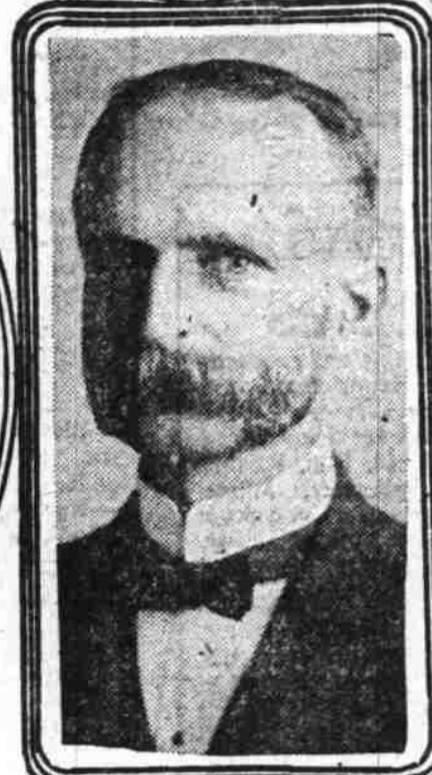
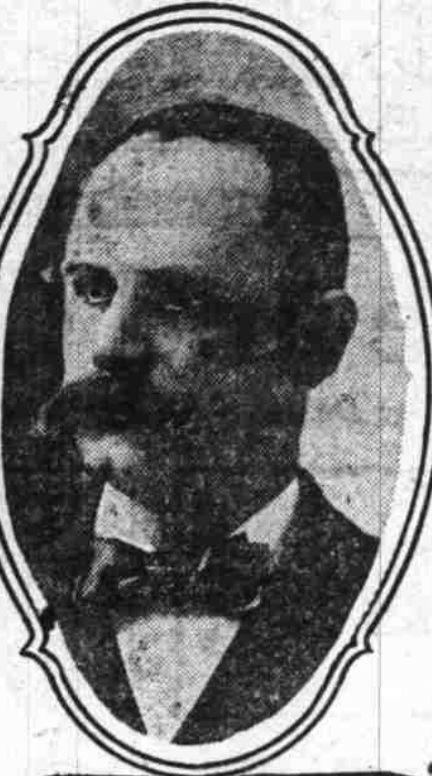
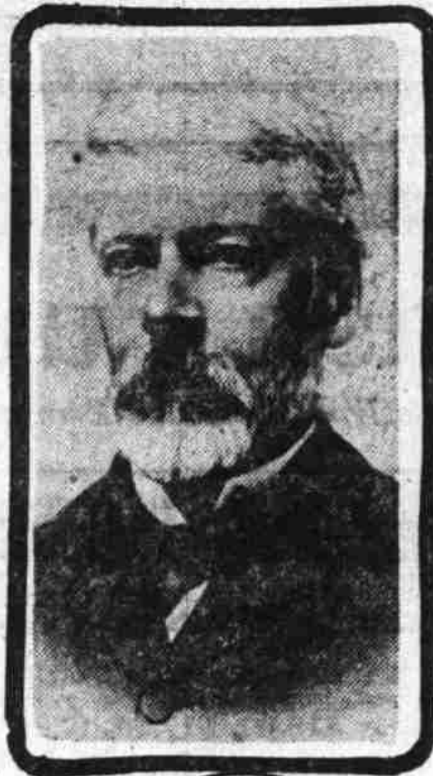
1—To relieve the destitute families and rescue them from being scattered and to help them to help themselves to self support and self reliance.

2—To keep the community informed of and working to reduce the factors that contribute to the destruction of normal family life.

The training of workers who will be administrators of the city's generosity has been assumed by the University of Oregon at the instance of the bureau and two executives of the staff, A. R. Gephart and Miss Amelia Peary, are members of the faculty of the university school of social work.

The bureau cooperates with the county in the administration of the public fund for the relief of need. Its workers call upon the families known to the county's relief bureau and in return the county provides the quarters at 544 courthouse.

MEN BANDED TO LEND HELP TO UNLUCKY ONES



Top, left to right—Dr. Thomas Lamb Elliot, Ben Selling, A. R. Gephart, present executive. Bottom, left to right—I. N. Fieschner, Thomas N. Strong, W. R. Walpole (first superintendent of city board of charities, afterwards renamed Associated Charities, and at present known as Public Welfare Bureau). (All pictures, except that of Mr. Gephart, are approximately contemporaneous with the date of organization.)

Census in Schools Gives Grants Pass Larger Population

Grants Pass, Nov. 20.—That Grants Pass is increasing rapidly in population is indicated by the school census reports. According to these reports there are at present 1330 students enrolled in the district of Grants Pass. This is the highest ever reached in local school enrollment. The nearest approach to this record was in 1910 when 1310 were registered with the clerk. The school census shows that many new families are arriving in the city and new names are being reported each week.

That the present population of the city is greater than ever before is further indicated by the house shortage. There are very few vacant houses to be found. Office rooms on the second floor of many of the downtown buildings have been fitted up as housekeeping rooms and are occupied by new arrivals. The situation has evolved itself into a very pronounced "own your own home" movement.

Railroads Oppose Corporation Farms; Favor Cooperation

Railroads of the nation are opposed to corporation farming, but are in favor of cooperative associations to standardize farm products through grading, according to action taken by the National Development league at a meeting in Chicago, November 11 and 12.

C. L. Smith, agriculturist for the O-W, R. & N., attended the meeting and led the discussion against corporation farming. Smith says that the topic was introduced by one of the Eastern railroad development heads with the request that favorable action be taken.

Smith opposed such a movement on the ground that the proper growth of America is based upon the home, and that it should be the desire to increase and not decrease the number of homes. Action was taken against the movement.

For distinction: a grand piano

Thousands of people viewed our windows last week. They looked in upon two distinctive rooms—as alike as two peas—except that: One room was glorified by a Grand piano. The other had an out-of-place Upright.

There is a definite place, of course, for an upright piano. But let us never forget—That an upright MAY be the "wrong" piano for its setting, but a Grand is NEVER "wrong."

Let us discuss with you this vital matter of the RIGHT piano. We have a wonderful collection of grand pianos on our floors this week. Your present piano will count liberally in the exchange.

Convenient payment terms gladly arranged

Sherman Clay & Co.

Sixth and Morrison Streets
PORTLAND
Opposite Postoffice
SEATTLE - TACOMA - SPOKANE

The Meier and Frank Fire Sale Of Furniture and Draperies Continues

to be the cause of price cutting. You can buy the highest grade of Mohair, Plushes, Velour, Tapestries, Furniture, etc., at the lowest prices ever given to the people of Portland.

SPECIALS FOR MONDAY

- 25 bolts of Lining and Cover Cloth, slightly damaged, yard.....15¢
- 20 bolts of Tapestry and Denims, regular \$1.50, special, yard.....35¢
- 50-inch Tapestries, large assortment of colors, at, per yard......22¢ and Up
- Mohair Plush, 28-inch width, slightly damaged, per yard......23.50
- Fine assortment of Tickings, yard......30¢ and Up
- Cedar Chests.....\$7.50 Up Steel Couches.....\$5.00
- Iron Beds.....\$1.50 Up Box Couches.....\$5.00
- De Luxe Double Deck Spring, regular \$22.00, our price.....\$6.50 Up
- Carload of large Reed Upholstered Rockers.....\$5.00 Up
- Also about \$100,000 of the highest grade of Mahogany and Walnut Bedroom, Dining Room and Living Room Furniture, which we are now unpacking and will be ready for sale within the next few days at tremendous reductions.

DRAPERIES on Sale 454 Washington, Corner Thirteenth

FURNITURE on Sale Madison St. Dock, Entrance on Madison Bridge

COUNTRY DEALERS WILL BE GIVEN SPECIAL PRICES

Cohen Bros. Owners

SEE OUR
REGULAR
AD
PAGE 1
SOCIETY
SECTION

Reliable Merchandise—Reliable Methods

Olds, Wortman & King

Entire Block—Morrison, West Park, Alder and Tenth Streets

SEE OUR
REGULAR
AD
PAGE 1
SOCIETY
SECTION

"Sweeper-Vac Week"

November 22 to 27

The manufacturers of Sweeper-Vac Electric Cleaners have designated November 21 to 27 as "Sweeper-Vac Week" all over America. The main purpose of this national campaign is to bring to the attention of the public the many superior features of these machines and to induce people to visit the "Sweeper-Vac" store, see the machine in actual operation, and judge of its merits. If you have any intention of buying an Electric Cleaner, it will be well worth your while to investigate the Sweeper-Vac.



ELECTRIC
SWEEPER-VAC
WITH MOTOR-DRIVEN BRUSH

Join the Christmas Club
And Buy Your

ELECTRIC SWEEPER-VAC

WITH MOTOR-DRIVEN BRUSH

On the Easy Payment Plan

\$5 Down

And \$5 Per Month

will send a Sweeper-Vac to your home at once. This cleaner is fully guaranteed in every respect and if you find it doesn't do all we claim for it we will gladly call for it without one cent of cost to you.

The Ideal Gift

Give her a lifetime reminder of your thoughtfulness. Give her smiles on future cleaning days. Give her an immaculate home every day in the year. Give her a Sweeper-Vac Electric Cleaner—it will be the best expression of loving consideration and the best eliminator of dust and work.

Two Electric Cleaners in One

—Yes, They Are Both in the One Sweeper-Vac!

CHOOSE WHICHEVER YOU WISH—One turn of the lever will give it to you—either a vacuum cleaner with Plain Suction or one with Motor Driven Brush and Suction combined. Instantaneously controlled by this lever is a unique mechanism in which the famous worm drive principle plays a leading role, giving a silent, sure drive for the correctly speeded brush, while at the same time it allows the high speed motor necessary for the most powerful suction. It also is light in weight, easy to operate, free from adjustments, and has many other very useful features.

Double Trading Stamps

given with all charge and cash purchases made Monday. Take advantage of this additional cash saving.



Sweeper-Vac Motors

- Have Great Power
- Correct Speed
- Quick Pick-up
- Perfect Balance
- Unlimited Endurance

Special Demonstration On Third Floor

—Come in and let our demonstrator explain the many advantages possessed by the Sweeper-Vac. You will marvel at the efficiency of this machine when you see it in operation. Removes every speck of lint, thread, dust and imbedded dirt, revives and brightens carpets and rugs and makes them look like brand new!

Every Machine Serviced

—We see to it that every Sweeper-Vac gives satisfaction. If by any chance your machine should get out of order, telephone the Electric Cleaner Dept. and our Cleaner Expert will service it free of charge.

—Let Us Demonstrate the Sweeper-Vac In Your Own Home!

Thanksgiving Sale of Home Needs

For the Great American Feast Day

—The Houseware Store is ready to supply you every need at reasonable prices. Matchless showing of Dinnerware, Fancy China, Cut Glass, Silverware, Cutlery, Glassware, etc. No matter what you may need of you will find it here in greater assortment than elsewhere. Dept., 3d Floor.

Dinnerware

- TURKEY PLATTERS in several sizes and decorations. Priced at \$1.48 to \$4.15
- CELERY TRAYS of decorated china. \$1.50 - \$1.75
- SALAD PLATES of decorated china. Priced at 50¢
- SUGAR AND CREAMER SETS of decorated china. Various shapes and patterns. Priced at \$1.00 to \$2.50
- MAYONNAISE Sets of decorated china. Choice assortment of patterns. Priced at a set, from 75¢ to \$1.50
- SALT AND PEPPER SETS of decorated china. Priced at a pair, 75¢ to \$1.00
- NUT DISHES of decorated china. Many different shapes and patterns. Priced at each, from 50¢ to \$1.00
- OLIVE DISHES, hand painted. Priced at \$2.25

Community Silverware

- 10 YEAR GUARANTEE
- \$6 Stag Handle Carving Sets, special \$4.95
- Onelda Silver-plated Tea Spoons, 6 for \$1.24
- Onelda Silver-plated Des. Spoons, 6 for \$2.39
- Heavy Silver-plated Table Knives 6 for \$3.05
- Silver-plated Table Forks, set of 6 for \$2.48
- Silver-plated Table Spoons, set of 3, \$1.24
- Bread and Butter Spreaders, set of 6, \$2.86
- Individual Salad Forks, set of 6 for \$3.24
- Silver-plated Oyster Forks, set of 6 for \$2.15
- Silver-plated Sugar Spoons, priced each 43¢
- Cold Meat Forks 86¢; Berry Spoons \$1.43

Carving Sets, \$4.95

—Three-piece Carving Sets specially priced for Thanksgiving sale. Stag handles with sterling mounting. High-grade steel. Put up \$4.95 in lined box. Regular \$6.00 sets at \$4.95

Glassware

- WATER TUMBLERS in many different sizes and styles. Priced special, each 12¢. 25¢. 35¢
- THIN GLASS WATER GOBLETs in plain or etched designs. Extra values 25¢. 35¢. 50¢
- DESSERT GLASSES in footed styles. These are of fine clear crystal. Priced 25¢. 35¢. 50¢
- CRANBERRY BOWLS each, 50¢ and 70¢
- WATER PITCHERS priced at \$1 and \$1.35

Coffee Percolators

\$3.48

Third Floor—Aluminum Coffee Percolators, just like this sketch. Seamless body and black wood handle fire protected. Shown in the popular six cup size at \$3.48



Sale of Model Roasters

Third Floor—Oval-shape Sheet Steel Roasters. Self-basting and bottom and cover made of seamless material. Fit nicely into any ordinary oven. —15-inch Roasters, regular \$1.48, special \$1.98

Blue Glazed Roasters

—Blue Glazed Turkey Roasters. Bottom and jacket all one piece. Elevated bottom, does not touch stove, prevents burning. Self-basting. —15-inch Roasters, special \$2.48 —17 1/2-inch Roasters, special \$2.98



Aluminum Roasters

—Seamless Aluminum Roasters, similar to above sketch. Oval shape, high polish finish. Regular \$3.98 —\$2.50 Universal Food Choppers priced at only \$1.98