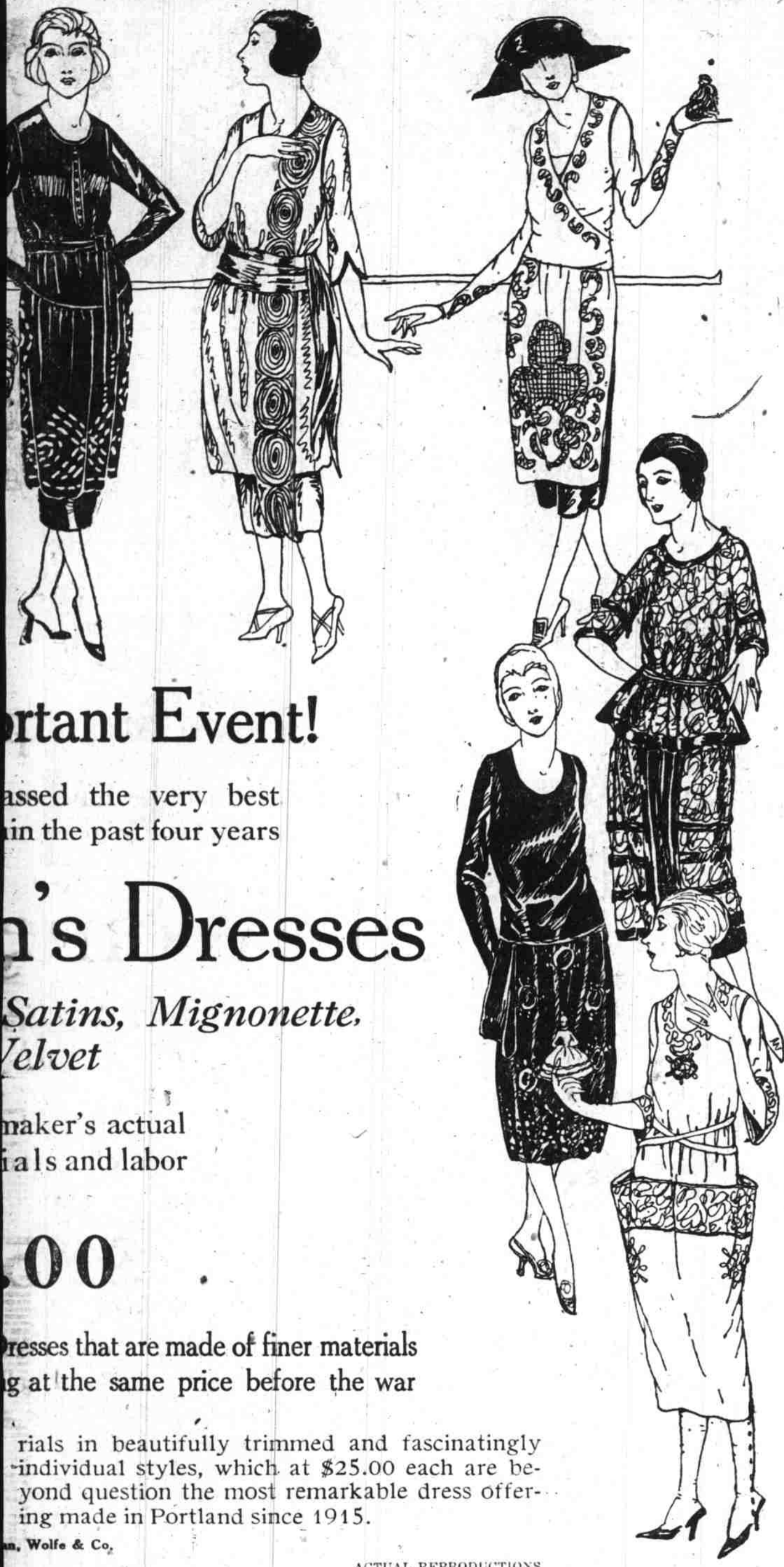


HOTEL BENSON COFFEE REDUCED TO 50c POUND—EIGHTH FLOOR

Portland's GREATEST SALE!

Lipman Wolfe & Co.
"Merchandise of Merit Only"



Important Event!

Passed the very best in the past four years

Women's Dresses

Satins, Mignonette, Velvet

Maker's actual materials and labor

2.00

Dresses that are made of finer materials at the same price before the war

Materials in beautifully trimmed and fascinatingly individual styles, which at \$25.00 each are beyond question the most remarkable dress offering made in Portland since 1915.

Lipman Wolfe & Co.

ACTUAL REPRODUCTIONS

Department Store

Everything for Less

Continue Wednesday With These New Specials

Save Christmas Dollars on Silk Jersey Petticoats \$2.95

You Could Scarcely Buy The Silk at \$2.95!

—Yes, silk petticoats for the worth of the silk—and full cut, too, especially over the hips—not like ordinary "sale" petticoats. With smart fancy flounces of self material or contrasting taffeta. In emerald, navy, brown, rose, magenta, French blue, taupe and gold. Just 200 of them.

Bring Crowds. Shop Early. Lipman Wolfe & Co.



Here Is Money-Saving News! Men's Globe and Stuttgarter Underwear

—Even our vast stocks cannot hold out for long under the demand resulting from these reductions. For these are favorite garments for present-day wear, the famed Globe and Stuttgarter makes, taken from our regular stocks and reduced as never before. Come Tuesday while assortments are most complete.

Men's Globe "Wool Process" Union Suits At \$2.95—2 for \$5.50

—Many men who buy carefully consider this the very best underwear to be had for this climate. Of long-fiber cotton, woven to give warmth without undue weight—a texture that is almost silky smooth and soft. You will want two, four or six of these at 2 for \$5.50.

Globe Fine Cotton Union Suits In White and Ecru	Winter-Weight Worsted Union Suits	Stuttgarter Union Suits Of Fine Wool and Cotton Mixtures
\$2.23	\$3.63 and \$4.87	\$3.39 and \$3.95

Shirts and Drawers, 89c to \$1.89 Each

Of Fine Ribbed Cotton, Garment	Of Fine Worsted the Garment	Of Heavy Merino the Garment
89c	\$1.48 and \$1.89	\$1.85

—Men's Shop, Just Inside Washington Street Entrance, Lipman, Wolfe & Co.

Leading Easily as Our Foremost Offering Women's Smart Wool Hose \$1.95 Pair Little More Than Half Price

Wool Cashmere and Silk and Wool Hose

—Made in wide or narrow ribbed styles, full-fashioned and seamless, wide or narrow hem tops. Very popular are these hose and exceptionally good looking. In both plain shades and heathers. The plain colors are Black, White, Navy and Brown—the heather colors—brown and green.

—Street Floor, Lipman, Wolfe & Co.

Scores of Pretty Soft Underthings in a Remarkable Selling Event All at \$1.95 Each

—Included in this sale are lovely crepe and soft-finished Batiste Gowns—Seco and Crepe de Chine Envelope Chemises—Camisoles and Boudoir Caps. Underthings that have demanded much higher prices than we are asking for them in this special sale.

Dainty Gowns

\$1.95 Of batiste or voile, daintily made, in slipover, sleeveless or empire effects, square and V-necks. Some lace trimmed with shirrings, others in the tailored style with hemstitched edge, in flesh tint only. The crepe models are in white or flesh, with fancy stitchings, or featherstitching and shirrings.

Envelope Chemises

\$1.95 Made of fancy figured seco silk or crepe de chine in regulation arm-hole or strap styles. Some in the popular pointed effects, many are trimmed with insertions of imitation filet or cluny lace, shirrings and hemstitching. The drawers are plain or lace-trimmed in a delicate flesh shade only.

Beautiful Flesh-tinted Wash Satin Camisoles

\$1.95 Made in open-front and slipover styles—some have wide yokes of dainty Calais or imitation cluny laces—others insertions of light blue ribbon combined with designs of hemstitching. Elastic at waist—strap over-the-shoulder effect.

Adorable Boudoir Caps

\$1.95 Fashioned of dainty crepe de chine or satin combined with net. Trimmed with ribbons and shirrings—many pretty styles to select from, at an exceptionally low price. Colors are—Flesh, Blue, Rose, Lavender—desirable for one's own self as well as for gift giving.

—Fourth Floor, Lipman, Wolfe & Co.



56-in. Broadcloth Sharply Reduced to \$4.67 Yard, 1/3 Less

—500 yards of beautiful Chiffon Broadcloth in all the most desirable colors, such as Navy, Taupe, Brown, Beaver, Copenhagen, Green, Plum and Black. —This is the finest Broadcloth obtainable on the American market today—it has been carefully selected from our own regular stock and offered at this reduction for this phenomenal selling event only.

—Second Floor, Lipman, Wolfe & Co.



60 Exquisitely Beautiful Model Hats

On Sale Wednesday—At Half the Regular Prices Now \$12.50 to \$25

—Millinery creations fascinatingly designed by such well-known makers as

Joseph Goldlor Gage Bruck-Weiss Warshauer Bendel

—Every hat is an exclusive model, charming in its originality and distinctiveness. There are models designed for dress or street wear, and beautiful picture hats for more formal occasions. The very newest shades are represented, as well as black. It is not often that Portland women have the good fortune to secure such beautiful hats at such prices.

—Third Floor, Lipman, Wolfe & Co.

3000 Yards of Filet Curtain Nets

At Greatly Reduced Prices

69c to \$1.83 Yd.

Savings of 25 to 33 1-3 Per Cent

—Our entire stock of Filet Curtain Net reduced from a fourth to a third below regular prices and separated into five price groups. In white and cream. Neat small figures.

—Fifth Floor, Lipman, Wolfe & Co.

Standard Quality Inlaid Linoleum

2200 Yards Reduced to

\$1.69 Square Yd.

—Linoleums of this high quality are seldom sold at this low price. This is a superfluous statement to make when talking to those acquainted with this linoleum. There are patterns for both kitchen and bath. Bring your measurements.

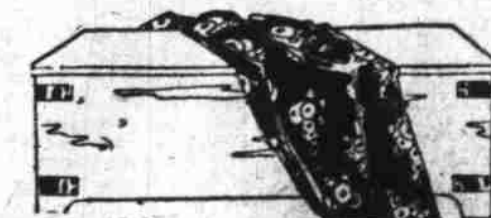
—Fifth Floor, Lipman, Wolfe & Co.

Red Cedar Chests

The Kind You Hand Down as Heirlooms

Extraordinarily Reduced to One-Third Less \$13.34 to \$38.34

—There are just 100 of these Chests made of the genuine selected Tennessee red cedar, the wood with that pleasing balmy redolence which permeates the chest in which your garments repose, giving to them at all times a fresh, wholesome fragrance. They are cedar Chests in the possession of which you take pardonable pride—Cedar Chests you cherish and that are cherished in turn by those to whom they are handed down. Plain or copper-trimmed and with sliding trays.



—Fifth Floor, Lipman, Wolfe & Co.