

"Stock Show, Let's Go," Is New Slogan Adopted by Pacific International

3500 ANIMALS OF BEST HERDS ARE AT STOCK SHOW

When the tenth annual Pacific International Livestock Exposition threw open its doors today, with the largest assemblage of pure bred stock ever gathered together anywhere under one roof, the city of Portland was definitely established as one of the world's most important centers for the development of the pure bred livestock industry.

Drawing from an expanse of richly fertile territory unrivaled anywhere and built up through the cooperation of business men, bankers, breeders and farmers all over the Pacific Coast, this great central stock show of the West has attracted attention all over the country. It has amazed breeders and livestock experts from the Eastern and Middle Western states by the great scope of territory from which it draws exhibits and by the unabating enthusiasm and splendid cooperative spirit of breeders, bankers, farmers, business men, agricultural colleges, county agents and all others directly or indirectly interested in the livestock industry, which has been the most powerful factor in building up this great outstanding annual livestock event.

ENTRIES BREAK RECORD

An idea of the comparative size of the Pacific International with other great livestock events of the United States can be had from the fact that while the National Dairy show last year had only 575 exhibits on view, the Pacific International has at the present moment 854 entries under its roof in its dairy section, which is only one division of its great all-purpose show. Another illuminating comparison is offered by the fact that the National Jersey show held last year at Shreveport, La., had only 225 entries from 26 exhibitors, while the Pacific International has today 334 Jersey entries in this one subdivision of its great dairy section, and the entries are from 45 different exhibitors who have brought their blue-ribbon animals from points as far distant as 1500 miles.

Not only in size, but in quality as well, the Pacific International challenges all other great fairs and stock shows to comparison. World champions and winners of purple ribbons will be found liberally proportioned in all breeds and classes, and the names of the various exhibits listed in the official catalogue are evidence of the fact that the pedigrees of the entries are of high standards, with world-famous strains in the various breeds generously represented.

TERRITORY RANKS HIGH

Careful checking up of the names and records of exhibits at the Pacific International will demonstrate beyond any doubt that already the territory represented by Pacific International exhibits is entitled to high rank among the leading breeding sections of the world. With climatic and all other natural conditions unsurpassed anywhere, and development possibilities that are practically unlimited, experts all agree that in the near future the Pacific Coast and intermountain country should lead the world in livestock production.

Building with a thought for future expansion, the Pacific International's board of directors so planned the new stock show pavilion that extensions can be added to all sections from year to year as the need for more space arises. The structure, which was completed just in time for last year's stock show, is built on a 15-acre site, and the plant as it stands today is valued at upward of a half million dollars. The building is ideally constructed for the purpose it serves and especially designed to take care of all needs. Besides the great central arena, where the night horse shows will be held, there are two smaller sales arenas capable of seating 1000 each, where auction of cattle in both the beef and cattle breeds can be held at once, and there are smaller sales rings for sheep and swine. A special system of lighting and ventilation is another feature of the structure.

DAIRY CATTLE SECTION LEADS

The entry list for this year's stock show totals more than 3500 animals, the finest flower of the best herds and flocks in all the Western country, including many Canadian points. With 850 head, the dairy cattle section leads all others in point of size. In this great section there are listed 334 Jerseys, 255 Holsteins, 150 Guernseys, 85 Ayrshires, with 65 milking Shorthorns and 12 Red Polleds in the dual purpose breeds.

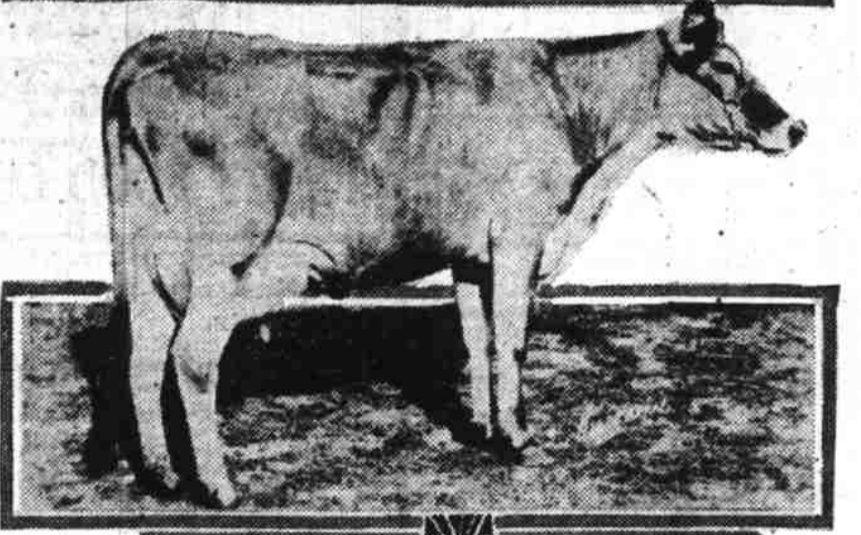
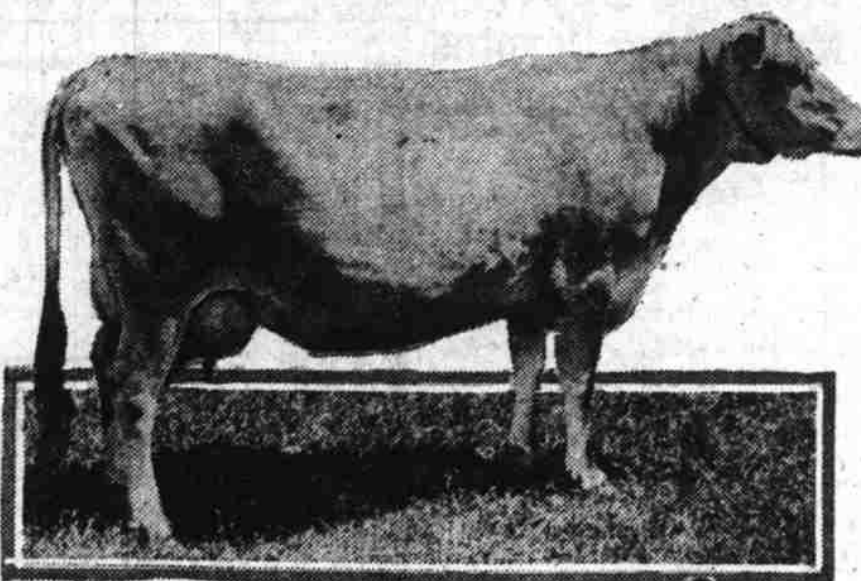
In the beef division there are 185

MONROE & CRISSELL
THE SIMPLEX-LINE
SIMPLEX SINO PAPEE
ENSILAGE CUTTERS
DAIRY CREAMERY AND
CHEESE FACTORY
MACHINERY & SUPPLIES
WRITE FOR CATALOGUE
1410 1/2 FRONT ST. PORTLAND, OREGON

HIGH-GRADE SHOES FOR ALL WORKERS
If you want dry feet ask for Bergmann Water-proof Shoe Oil. Ask your dealer or write us for catalogue.
THEO. BERGMANN MFG. CO.
621 THURMAN ST. PORTLAND, OR.

ELECTRIC MASSAGE Brings and Retains Health and Beauty
THE STAR ELECTRIC VIBRATOR
Largest and Best. File your Light Socket. Safe and Simple. **WARRENED** Mechanically perfect. **\$8.00** All charges paid to any address in United States.
WOODARD, CLARKE & CO.
Woodard Bldg., Portland, Ore.

PART OF FAMOUS FAMILY



Two daughters of Valentine's Ashburn Baronet and Wilda of Ashburn. The upper cow, Lulu May of Ashburn, has a record of 710 pounds of fat, and Lulu Flossie of Ashburn, shown below, has a record of 583 pounds fat as a junior 2-year-old. These fine cows, with many others like them, make up the largest showing of Jerseys ever on exhibition in this country.

Herefords, 255 Shorthorns and 85 Aberdeen Angus. There are 200 heavy draft horses and 175 fancy gaited horses, jumpers, burdiers, light harness animals and other show ring horses.

The various breeds of pure-bred sheep total upward of 600 entries, and in the swine division there will also be approximately 600, with about 75 entries in the goat section.

Today is school children's day at the Pacific International and all children are admitted free to encourage the interest of the coming generation in the vital livestock industry. Tomorrow there will be a special band concert and admission will be half price for all. On Monday morning the regular program of events will begin, with judging contests, sales and other features, as scheduled in the official catalogue, and on Monday evening the night horse shows will begin, continuing each night throughout the week, with special matinee on Saturday, November 20, the closing day of the show.

Testing Is Begun By Dairy Breeders

The following breeders of dairy cattle have started testing for the first time or have renewed testing during the month of September, each of the breeds being represented: Ayrshire, by Lathrop Brothers, Grants Pass; Shorthorns, by Oakleigh farm, Medford, and R. F. Moran, Medford; Jerseys, by George Platz, Thurston; Holsteins, by Wist Brothers, Scappoose, and Max Arp,

PORTLAND CATTLE LOAN COMPANY

NORTH PORTLAND, ORE.

INVESTORS

Do your funds lie idle while you are seeking suitable long-time investments?

Our receivables, based on livestock security, are of three to six months maturity denominations at \$500 to \$5000, and yield a liberal return of interest. Prompt payment guaranteed by us when due.

CALL AT OUR OFFICE WHILE AT THE STOCK SHOW

Capital \$600,000.00
Surplus and Reserves \$550,000.00

4 GENERATIONS OF JERSEYS SHOWN

The firm of J. M. Dickson & Son are showing four generations of their famous Jersey family, at the Portland show this week. The first generation is represented by Wilda of Ashburn, who is grandam of Lulu Alpha of Ashburn, the world champion 2-year-old over all breeds.

Two of Wilda's daughters will be shown—Lulu May of Ashburn, with record of 710 pounds of fat, and Lulu Flossie of Ashburn, with record of 583 pounds of fat as a junior 2-year-old—both from the same sire, Valentine Ashburn Baronet, who is the tenth bull to be awarded the American Jersey Cattle club silver medal. St. Mawes Queen R, a full sister to Lulu Alpha, represents the third generation, and a daughter of Lulu and a daughter of a full sister of Lulu Alpha make up the fourth generation.

A full brother and two sisters of Lulu Alpha will be in the Jersey sale on Wednesday. It is seldom if ever that such a chance is offered the public to buy brothers and sisters of world champions. Dicksons do not make it a habit of showing at the fairs and were not anxious to consign any animals to the sale, but they are showing this champion family by special request—that was almost a demand—and they are consigning a few to the sale to make the quality sale of Jerseys possible.

The Dickson herd has been built up for years with the idea in mind of making the entire herd one of quality with large average records rather than for a few phenomenal records. They are finding, however, that extra large records will result from such a breeding policy and now find that they have bred animals that have taken their place as world champion producers over all breeds. They are using only proved sires and cows that have entered the register of merit. This herd's initial bow in the show ring is as an educational feature along production lines, but will also show up some fine dairy conformation and considerable show type.

Aberdeen-Angus Rank High

Aberdeen-Angus cattle have made their greatest showing this year, and

T. C. BENSON Cattle Salesman
MAX SCHULZ Assistant

A. R. BENSON Hog and Sheep Salesman
FRANK NICHOLS Assistant

Benson Commission Company
Phone Woodlawn 2400
SHEEP, CATTLE, HOGS
NORTH PORTLAND, OREGON

I. D. BODINE, Woodlawn 1978
R. L. CLARK, Woodlawn 580

Office Phone Woodlawn 2400

BoDine & Clark
LIVESTOCK COMMISSION CO.
NORTH PORTLAND, OREGON

Benton Farm Value Shown \$15,550,773

Benton county's farm property valuation as given out by the federal census bureau, subject to correction, is \$15,550,773, an increase of 48.1 per cent since 1910. The number of farms is 1320, of which 1058 are operated by owners. The land in farms is 233,427 acres, the land actually farmed 103,175. The 1225 domestic animal farms have 4497 horses, 56 mules, 10,694 cattle, 20,489 sheep and 7324 swine. Only 95 farms have no livestock.

4849 COWS TESTED IN 8 ASSOCIATIONS

Cow testing association reports for September show that 4849 cows were tested in eight of the nine associations, the oos Bay group not being represented.

The average milk yield was 533 pounds, carrying 25.62 pounds fat. Honor cows for the month—those giving more than 40 pounds of fat—numbered 345.

The highest fat yield was made by a grade Jersey owned by M. Lassen of

the Coquille-Myrtle Point association. She gave milk containing 72.7 pounds of fat. The highest milk yield was 1545, made by a registered Holstein belonging to John Schids of the Tillamook association.

The highest average milk yield, 624 pounds, was reported by the Rogue River association. This association likewise reported the heaviest fat yield, an average of 29.96 pounds. This was probably due to the freshening of a large number of cows, says E. B. Fitts, in charge of testing association work for Oregon, representing the Agricultural college and the federal dairy extension work.

The Smith-Umpqua association tested the largest number of cows, 886, and the largest total of cows running above the 40-pound mark, 86.

Six registered animals were bought within the month by association members.

Experimenters in England have succeeded in making starch from the Indian sweet potato.

An Invitation to visitors to

The Pacific International Livestock Exposition

Be sure to visit the home of

Premium Hams
Premium Bacon
Silver Leaf Brand Pure Lard

Guides will escort visitors through our plant, showing the systematic and sanitary way we handle the great meat industry.

SWIFT & COMPANY

North Portland, Oregon

GUERNSEY DAY

THURSDAY, NOVEMBER 18, 1920

At the Pacific International Livestock Show
Portland

The Great Guernsey Auction Sale

will be held in the dairy sales arena, starting at 10 o'clock. This sale includes a number of great herd sires, A. R. cows, bred and open heifers and a few young selected bulls.

This will be an ideal opportunity to secure foundation stock or strengthen herds.

The following list of consignors is a guarantee of the quality of the offering:

J. E. WRAGE, Arlington, Wash.
A. I. & J. HUGHES, Oregon City, Or.
HAWLEY & SON, McCoy, Or.
J. T. WHALLEY, Portland, Or.
J. A. & J. T. RICHEY, Boring, Or.
F. S. HUTCHINSON, Oregon City, Oregon.

H. I. CARL, Hubbard, Or.
H. E. ANGEL, Mabton, Wash.
F. H. STANGEL, Sherwood, Or.
L. J. PEREY, Wendell, Idaho
A. L. GILE, Chinook, Wash.
F. D. BAILEY, Corvallis, Or.
R. C. JONES, Tillamook, Or.
FRANK HUNTER, Tillamook, Or.

This sale is to be held by the cooperation of the Guernsey Breeders of the Northwest and under the auspices of the Oregon Guernsey Cattle Club.

BUY JERSEYS JERSEY DAY

Pacific International Livestock Show
Portland, Oregon, Wed., Nov. 17th, 1920

This sale will contain only Jerseys of highest quality, especially selected. The females of mature age all have high R. of M. records, the younger ones are from R. of M. dams. The fact that they are being consigned by the leading breeders of the state is a guarantee that the most popular blood lines are represented.

I am especially proud of the bulls that have been secured for the sale. Many come of world record stock.

Help make this the greatest "Jersey Day" in the history of the West. Your presence and support will be appreciated.

Sale Headquarters—Jersey Booth, Pacific International Exposition

Sale Under Auspices of the Oregon Jersey Cattle Club

SALE MANAGER RINGMAN AUCTIONEERS
E. A. Rhoten, Salem, Ore. C. D. Minton Col. J. W. Hughes Col. Ben T. Sudtell

Make Pacific International Livestock Exposition Week

NOVEMBER 13 to 20

The Big Week in Portland

60% more entries this year than last is the prediction of O. M. Plummer, Manager.

If you are interested in Pure Bred Dairy and Beef Cattle, Hogs, Horses, Sheep and Goats, set aside these dates for your trip to Portland.

Also visit the Portland Union Stockyards and see the Public Livestock Market in full operation.

A cordial welcome awaits all visitors.

Portland Union Stockyards Co.

North Portland, Oregon

JAMESPORT, MO. GREBE, ORE.

Missouri and Kentucky Jacks

FOR SALE OR LEASE

H. B. THORNBERRY

DEALER IN REGISTERED JACKS, JENNETS, PERCHERONS, SHIRE STALLIONS and GAITED KENTUCKY SADDLE HORSES

Largest Importer of Jacks and Jennets in the United States

All Stock Sold Under the Best Possible Guarantee.

1226 West Fourth Avenue Phone Main 1417
SPOKANE, WASHINGTON