

PORTLAND, OREGON, SUNDAY MORNING, OCTOBER 31, 1920.

RUE DE LA PAIX CHOCOLATES—MOST DELICIOUS AS WELL AS WHOLESOME, \$2—STREET FLOOR

Our Mail Order
Department—will be glad to shop for you efficiently
and satisfactorily. Address our Personal
Service Bureau.Mendel Dust-Proof
Wardrobe Trunks—will assure you the luxury of fresh,
clean clothes at the end of your journey.
—Fifth Floor
Lipman Wolfe & Co.
 Merchandise of Merit Only

For News of Other Important Sales See Page 3,
This Section, and (for Men) Page 9,
First Section

On Monday—120 Women's Exquisite Tailored and Novelty Suits

Of Duvet de Laine, Ylama Cloth, Tricotine, Silvertone
and Poiret Twill

At These Remarkably Low Prices

\$40 to \$125

Offering Savings of One-Third to One-Half

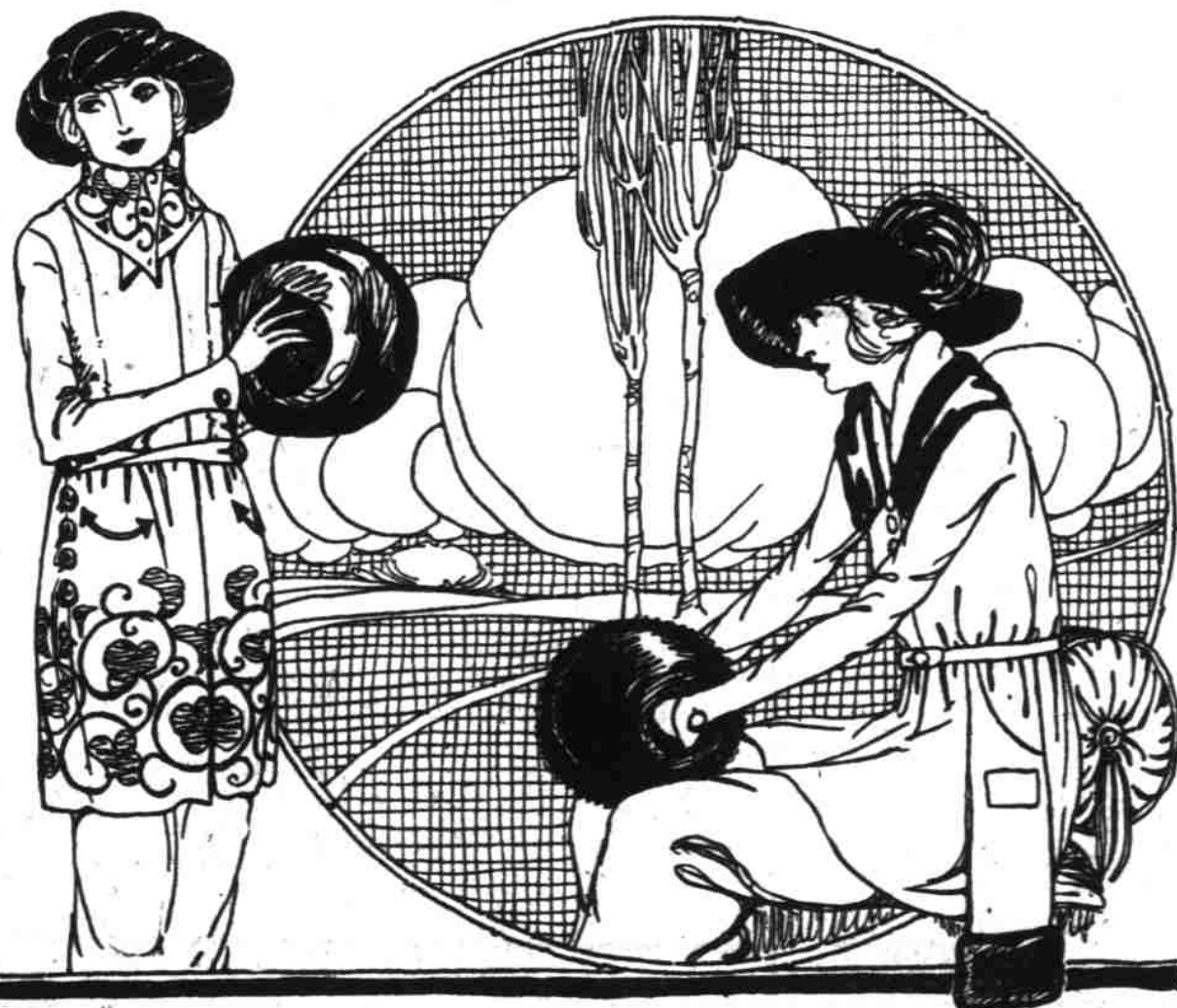


ORIGINAL showroom adaptations of imported models, made of exquisite materials in the latest and most fashionable styles—the adaptations of a most exclusive manufacturer who displayed them for once ONLY to his select clientele, consisting solely of proprietors of smart Fifth avenue shops in New York. The very fact that they were exhibited once explains the very low prices. Each year this maker is besieged by buyers anxious to obtain his showroom models. We were the fortunate store this season. It was our turn this year. We got them at his usual concession, which we are turning over to you.

—The assortment also includes the surplus stock of a manufacturer of one of the very highest grade suits. It is comprised of all this season's most popular and up-to-date styles in both straight-line as well as flare and ripple effects. Most every suit is trimmed with fur, such as Squirrel, Nutria, Scotch Mole, Australian Opossum and Seal.

—Silk linings, trimmings and workmanship of the very finest. Prices on suits illustrated range from \$60.00 to \$65.00.

—Third Floor, Lipman, Wolfe & Co.



Exquisite New Creations in Breakfast Coats and Negligees at Two Alluringly Low Prices

Breakfast Coats, \$10.00

Negligees, \$19.50

—Women will be delighted with these. It would tax our vocabulary to depict their beauty.

—The Breakfast Coats are of taffeta, in such shades as peach, blue, American beauty, gold, sapphire, and old gold, and are made with fancy pockets and sash with trimmings and ruffles to gratify the most exacting feminine tastes.

—The Negligees are of crepe de chine in such shades as turquoise over peach, pale blue over flesh, plain shades of violet, peach, orchid, turquoise, pink and blue, with trimmings of georgette and fancy lace. Others are made of heavy crepe meteor; still others of plaited crepe de chine with three-quarters or full length over-jacket of chiffon.

—Fourth Floor, Lipman, Wolfe & Co.



Night Gowns, Camisoles, Envelope Chemises —An Unbelievably Low Price, \$1.95

—The softest, most exquisitely fine flesh-tinted materials have been used—the kind that the luxurious woman loves but usually pays so much more for.

Night Gowns, \$1.95

—Made of beautiful flesh-tinted batiste and fancy striped voiles, sleeveless or sleeve effects; pointed or empire styles; exquisitely finished.

Camisoles, \$1.95

—Lovely flesh-tinted crepe de chine or wash satin. Slip-over open front style; built-up shoulder and strap effect. Lace insertion and edging; also dainty ribbons.

Envelope Chemises, \$1.95

—Dainty flesh-tinted pure silk crepe de chine or dotted seco; tailored, hemstitched edge, or deep yoke of filet pattern lace. Strap, regulation or pointed style.

—Fourth Floor, Lipman, Wolfe & Co.



350 Novelty and Tailored Blouses and Over-Blouses Attractively Underpriced at \$7.50

—Of Georgette, Crepe de Chine and Mignonette in
an endless variety of styles in the very newest models.

—Over-Blouses of mignonette in various lengths, in white, flesh, navy, brown, Aztec, orient, Hindu, burgundy and bisque.

—Tailored Blouses, including the famous Burlingame Blouse of the finest crepe de chine, in white, flesh, navy and black.

—Third Floor, Lipman, Wolfe & Co.

THIS STORE USES NO COMPARATIVE PRICES—THEY ARE MISLEADING AND OFTEN UNTRUE