

Tuesday's sales
are good sales

Lipman Wolfe & Co.
Merchandise of Merit Only

Come early for
the choicest plums

Economy Basement Store

EVERYTHING FOR CASH—EVERYTHING FOR LESS

Reduced to **50c** pr. 3000 pairs of women's stockings of pure thread silk and fiber silk **50c** pr. Reduced to

—You haven't bought so good a pair at 50c in several years. Come prepared to buy at least six or a dozen of them, because they are the kind you have been wanting to get—only at a lower price than you expected to pay. Full-fashioned and semi-fashioned. Heavy weight reinforced with lisle soles, toe and high spliced heel and extra wide garter-proof tops. Some "seconds" in the lot. In black, gray and brown. Lace, plain and drop stitch patterns.

**Children's
Buster Brown stockings
50c pair**

—Medium weight cotton in black only. Ribbed.

**2600 children's school stockings
2 pairs 50c**

—The kind that will wear a long time. Made of medium weight ribbed cotton with double toe and heel. Full length. Fast dye black. All sizes except 6½.

**Women's
cashmere
stockings
50c pair**

—We can't buy them today at this price. Just 200 pairs so you better do your shopping early if you want a pair. They have double toes and heels and garter-proof tops, and are in sizes 9, 9½, 10 and 10½.

**Infant's cashmere stockings
50c pair**

—Soft yarn. Reinforced toe and heel. Fine ribbed. White. Sizes 4 to 6½.

**1500 women's stockings
50c pair**

—Two lots, both made of fine cotton with double toe, heel and garter-proof top. Black, in sizes 9, 9½ and 10; white, in sizes 8½ and 9.

—ECONOMY BASEMENT, Lipman, Wolfe & Co.

The new "Empire" gingham aprons
at a new and
very low price

\$1.00

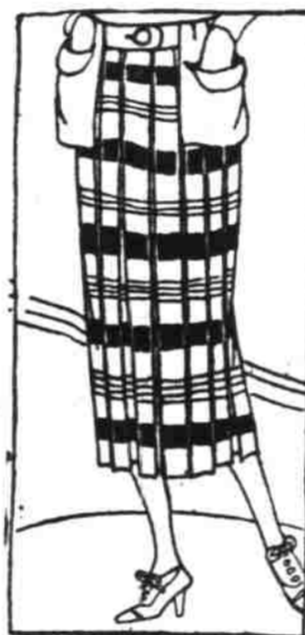


—To buy an apron wisely and spend a dollar wisely—that is exactly what this offering of this new and very popular Apron at \$1.00 means. Identically the same Apron sells elsewhere for more.

—Made of a standard grade of gingham in stripes and fine checks in pink, blue and lavender. Short-waisted, sleeveless style and with sash which ties in a bow at the back. Also two large patch-pockets and smart trimming of ric rac braid.

—ECONOMY BASEMENT—Lipman, Wolfe & Co.

New plaid skirts for
women and misses
sale-priced
\$6.85



—Just received, as smart as they are new, and as special as they are smart.

—Of Jamestown and Broadhead serge plaids—famous for beauty and wear. Box pleated in the season's most approved style. Only a very special purchase enables us to offer them at \$6.85. Compare these with skirts costing more and you will be sure to invest.

—ECONOMY BASEMENT—Lipman, Wolfe & Co.

Important sale of
DRESSES at \$14.95

Most unusual
values in
All-wool
serge dresses

beautifully
embroidered,
braided,
pleated

A New Lot in a Number of
Styles—Dark Navy

—A special purchase specially priced. Dresses such as sell in the regular way for at least half again as much. Come early for your size.

—ECONOMY BASEMENT—Lipman, Wolfe & Co.



FINE SILKS
¼ to ½ less

—At their original prices you could not have duplicated these silks outside of the Economy Basement store, and now they are to sell for as little as about half the price of only a few days ago. New Silks, dependable Silks, superb Silks. You will want some of these savings, surely, so come early.

39-40-In. Crepe de Chine

—A rich, heavy supple silk that will drape beautifully in blouses or dresses and make lingerie that will wash to perfection and give splendid wear. A good line of colors to start the sale.

\$1.65
YARD

35-In. Chiffon Taffeta

—The fall's most popular shades—navy, Japan blue, African and black to start the sale. But they will sell out very quickly—the quality, width and price make it certain.

\$1.95
YARD

Fine Duchess Satin

—For a soft, lustrous, serviceable dress; for a smart tailored waist or a novelty overblouse—there is no better satin to be had. 35 inches wide. The price is very low for this quality.

\$2.65
YARD

35-Inch Messaline

—The richest, most glistening and serviceable of weaves. You would pay at least a third more for this anywhere else. Lovely light and dark shades. Come early for widest choice.

\$1.89
YARD

—ECONOMY BASEMENT—Lipman, Wolfe & Co.

Baskets

Imported From the Orient
and Hand-Painted in
Our Own Workrooms

25c Each

—These beautiful Baskets are hand-painted in a variety of rich color designs and make a very attractive and ideal basket for shopping or sewing. 25c is an extraordinarily low price for these baskets.

—ECONOMY BASEMENT

Savings on
GLOVES

—Knit Wool-Mixed Gloves and Mittens for infants, misses, boys and women, 20c to \$1.50
—Children's Leather Gloves and Mittens, fleece-lined, at .75c to \$1.75
—Boys' Rough Rider and Scout Guntlet Gloves for school and play, a complete line at .65c to \$1.25

—ECONOMY BASEMENT

517 pairs women's high shoes reduced to

At Wholesale and Less Than Wholesale Price
About Half the Lot are the Famed Red Cross

\$5.85

Pair



—All-leather and cloth top Shoes, also brown and gray kid vamps with cloth tops, narrow, medium and wide toes. All with Goodyear welts—the best. Lace and button styles, some 9-inch boots for wear with the new short skirts. Sizes 1½ to 9, widths AAA to E, not all sizes in each shoe but all sizes in the lot.

No Exchanges, No C. O. D.'s or Refunds—Every Sale Final at This Price

—ECONOMY BASEMENT, Lipman, Wolfe & Co.

Baby
Lecture
By R. R.
Hamilton,
M. D., Tues-
day Noon
4th Floor

Lipman Wolfe & Co.
Merchandise of Merit Only

Demon-
stration
of Hoover
Sweepers
—Street Floor

40-Inch All-Silk Georgette
6,000 Yards, Including Our Very
Best Qualities, Drastically Reduced
to **\$1.85 Yard**

—There are many grades of All-Silk Georgette—these happen to be the heavier and finer qualities—OUR VERY BEST GEORGETTES!

—Second Floor, Lipman, Wolfe & Co.

—In a full range of colors—those that are particularly appropriate for evening gowns, afternoon frocks and blouses.

Go All Over
The Town

and note the quality and the prices, then come here and see for yourself that which we have been telling you about for years—that here you will find merchandise of the highest quality at the lowest prices. This first-hand evidence will be more convincing than our written repetition of the fact day after day.

—"Seeing is believing" we have been told. If you will but look around before succumbing to the lure of the comparative value Lorelei, you, personally, and your purse will profit. —And you will entertain as little respect for this fickle creature in the shape of comparative values as we do—which is none at all.

SALES CONTINUED

BLANKETS AND COMFORTS—Our entire stock marked at the smallest margin of profit ever known for such a sweeping event.—(Second Floor.)

HANDKERCHIEFS—Featuring the products of W. J. Jenkins Mills, Belfast, Ireland, at unmatchably low prices.

ART NEEDLEWORK—In which positive savings of 20 per cent predominate.—(Fourth Floor.)

PICTURE FRAMES—Our entire stock marked 20 per cent less than regular low Tuesday is the final day.

Tuesday Notion Specials

—Kleinert's La Vida Garment Shields, sizes 3, 4 and 5. Pair .79c
—Skirt or trouser hangers .5c
—Dr. Parker's Waist and Garters for boys and girls. Sizes 2 to 14 .60c
—Hair Nets—Matchless invisible motor net with elastic, all shades .10c
—Yankee Curlers, 3 on a card, sealed tips .10c
—Safety Pins, Darling brand, assorted sizes, guarded loop and rust-proof, 2 cards .15c

—Street Floor, Lipman, Wolfe & Co.

**300 Pairs Women's Beautiful
Lace Silk Stockings, \$4.45**
Decidedly Under-Price, Making for
Excellent Savings

—Three higher priced grades of Lace Silk Stockings have been taken from our regular stock and marked at \$4.45 a pair, making each pair a superlative offering. In black, white and cordovan with double sole, toe, heel and garter-proof tops. Full fashioned and in beautiful lace patterns.

Women's High-Grade Knit Union Suits, \$1.00—Reduced!

—500 Suits that have been more in our regular stock—Viola, Kayser and Princess May brands—all first quality garments in low neck, sleeveless, knee length and tailored band top styles. Regular and extra sizes.

—Street Floor, Lipman, Wolfe & Co.

Hallowe'en
Candies

—Our expert confectioner is preparing the most delicious as well as novel candies for Halloween events.

—Candy novelties in the form of cream wafers specially ornamented, 60c lb. Acorns, \$1 lb. Bon bons, specially decorated, 80c lb. Lagoon Paste, 80c lb. And Mellow Dips in Halloween colors. There are other novelties and fantastic little baskets to be filled with your favorite candy, as well as salted almonds, peanuts, pecans, and our incomparable Rue de la Paix Candies.

—Sweets Booth, Street Floor.

Hallowe'en's Comin'!

Novelties, Decorations, Pies, Cakes, Pastry,
Candies for Your Party, Dinner or
Dance October 30.

—Halloween with all its delightful surprises, its mysteries, and fantasies of witches and spooks and jack-o-lanterns has for many generations meant the gathering of young folks for fun and merriment at fantastically gowned parties, dinners and dances. In keeping are the decorations and novelties—the pies and cakes, the pastries and candies.

—For these dinners and dances and parties we have the most complete Halloween essentials.

Decorations and Table Novelties
for Halloween

Dennison's Lunch Sets, including table cloth, 12 plates and 12 napkins, at \$1.00
Crepe Paper Napkins, package of 18 at 15c
Plain Black or Orange Crepe Paper, bolt 20c
Decorated Crepe Paper, bolt 25c
Halloween Table Favors in many styles — 10c, 15c and 20c
Halloween Pumpkins—10c, 15c and 25c
Halloween Place Cards and Invitations — 10c and 15c
Halloween Cut-outs, black witches, cats, owls and bats at 6c and 10c

—And hundreds of other novelties, including Caps and Masks.

—Street Floor, Lipman, Wolfe & Co.

Order Your Pies, Cakes
and Pastries in Our
Tip Top Inn Bakery

—Here we are preparing to take care of the many orders for those delicious Pumpkin Pies, Decorated Cakes and Pastries for which we are so well known.

—Cakes to be specially ornamented should be ordered at once for Halloween.

—Tip-Top Inn Bakery,
Eighth Floor,
Lipman, Wolfe & Co.

THIS STORE USES NO COMPARATIVE PRICES—THEY ARE MISLEADING AND OFTEN UNTRUE