

EFFICIENT MARKETING

OREGON COUNTRY LIFE

BETTER FARMING

PRUNE POOL IS OPEN AGAIN; ALL GROWERS INVITED

By J. F. Langner
The Oregon Fruit Growers' association has reopened its prune pools which were closed by order of the board of directors some weeks ago.

The association has concluded financial arrangements with a group of powerful bankers to advance to the growers on delivery of their prunes from 2 to 5 cents per pound, according to size, upon delivery to the association packing houses.

But he is a powerful factor in the speculative handling of the prune crop of Oregon. He has tremendous financial resources. He can borrow money from the largest and most powerful financial institutions in the country.

But the Oregon Growers' association and the prune grower members of the association are in a difficult situation. The avowed purpose of the association is to create a stabilized market and to eliminate the speculative element.

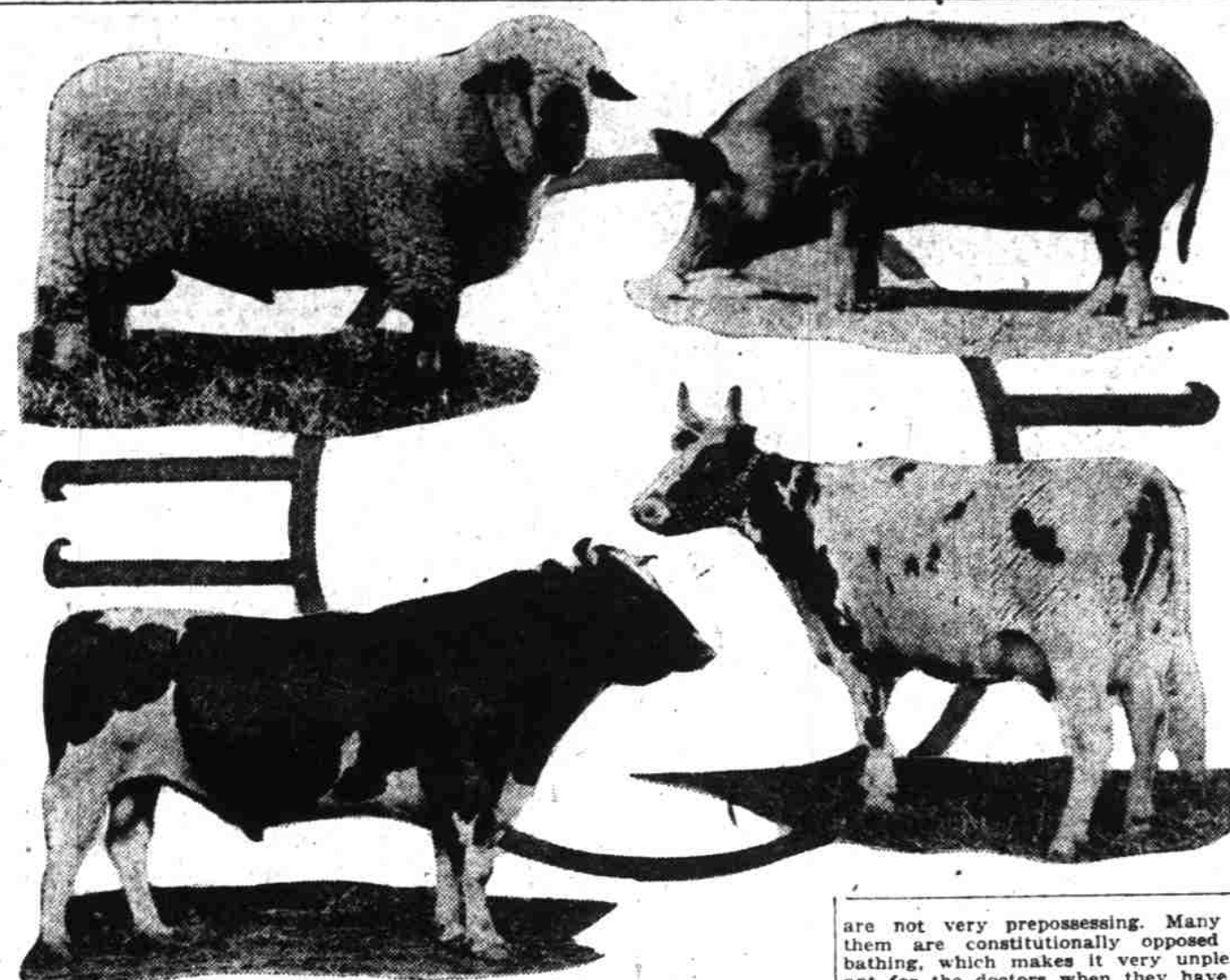
But the Oregon Growers' association and the prune grower members of the association are in a difficult situation. The avowed purpose of the association is to create a stabilized market and to eliminate the speculative element.

But the Oregon Growers' association and the prune grower members of the association are in a difficult situation. The avowed purpose of the association is to create a stabilized market and to eliminate the speculative element.

But the Oregon Growers' association and the prune grower members of the association are in a difficult situation. The avowed purpose of the association is to create a stabilized market and to eliminate the speculative element.

But the Oregon Growers' association and the prune grower members of the association are in a difficult situation. The avowed purpose of the association is to create a stabilized market and to eliminate the speculative element.

CHAMPIONS AT MULTNOMAH COUNTY FAIR



Upper left—Champion Hampshire ram at Multnomah County fair, owned by I. G. Hubbard & Son of Monroe, Or. Upper right—Grand champion Tamworth sow, owned by I. J. Oder of Yakima, Wash.

Lower left—Grand champion Holstein bull, "Segis Walker," owned by David McKeown of Gresham. Lower right—Grand champion Ayrshire cow, "Princess Happy," owned by Earlestock Farm, Eagle Creek, Or.

are not very prepossessing. Many of them are conditionally opposed to bathing, which makes it very unpleasant for the doctors when they have to be put to bed in the hospital.

Immigrants from Poland have been making a great fuss about having been robbed at Danzig, but two English women in the steerage of the Adriatic gave some light on this troublesome matter last week.

We are promised the hottest summer man next year. If the fashion is ever introduced, his squint may become terrifying. Man has no reserve source of beauty to draw from.

IF YOU NEED NURSERY STOCK Please Mark and Return and We Will Send You Prices

THE NORTHWEST HEREFORD CATTLE BREEDERS' ASSOCIATION Catalogues will be mailed on request. ADDRESS: R. P. BANKS, SALES MANAGER, BOX 55, PORTLAND, OR.

Advertisement for BULL DOG SUPERIOR ONE MAN STUMP PULLER, featuring a picture of the machine and text describing its benefits.

STOCK SHOW MEN RUSH TO FIND ENTRY SPACES

Beyond the most optimistic predictions of the livestock enthusiasts of the Northwest, and surpassing the most ambitious expectations of the stock show management itself, the Pacific International Livestock Exposition closed its entries at noon on October 15 with an average of 60 per cent increase over last year in all classes of breeding stock.

So overwhelming was the volume of entries that poured in from all points of the compass the last few days, and particularly at the eleventh hour of the last day, that the rejocing of the busy staff in stock show headquarters in the Northwestern Bank building was turned to dismay as it became evident that the management would be confronted with no easy problem in providing housing and accommodations for the mammoth assemblage of exhibits that were being officially listed.

General Manager O. M. Plummer immediately called the Pacific International's building committee together for a consideration of the emergency. Although the big pavilion completed just in time for last year's show covers an area of six acres, it was obvious that even by reducing the aisle space and remodeling the stalls and pens to secure the maximum of accommodations, there would still be a shortage of shelter for the tremendous total of pure bred exhibits that will begin pouring into Portland from all the Pacific coast and intermountain states and from Western Canada a few days before the opening of the exposition on November 12.

After a strenuous session of figuring and planning it was decided that temporary annexes covering approximately two acres would have to be built and fitted with stalls and pens, these taking the form of extensions of the big beef and dairy barns at either end of the stock show stadium, and an enlargement of the sheep, swine and hog division at the rear.

"We are not certain as to the details as to just how we are going to do it," said Mr. Plummer the other day, "but we will have accommodations ready for all our entries by the time the show is open, and while it is going to make us hustle to take care of the overwhelming excess, we are mighty glad to have this gratifying surplus, which will make our approaching show one of the largest events of its kind ever staged anywhere and a triumph for everyone interested in the livestock industry here in our Western country."

Leading all other classes in the entries for this year's Pacific International are the Jerseys, with 346 entries, and the Shorthorns, with 324 exhibits, are a close second. In the dairy division, the Holstein entries are almost as heavy as the Jerseys, with a little less than 300 exhibits; the Guernseys will have 150 and the Ayrshires 75. There will be some 60 milking Shorthorn exhibits and a herd of Red Polleds.

In the beef classes, second to the Shorthorns will be the Herefords with entries numbering well above the 200 mark. In the Aberdeen-Angus class, represented last year by only three or four animals, there will be upward of 75 exhibits and there will be a herd of Red Polleds.

In the swine division, more than twice as many animals are listed as last year, and there will be an increase of 50 per cent in the sheep and goat sections. The horse division will show a 40 per cent increase, and the exhibits of the boys' and girls' livestock clubs will be 50 per cent larger than last year.

STOCK SHOW MEN RUSH TO FIND ENTRY SPACES

Beyond the most optimistic predictions of the livestock enthusiasts of the Northwest, and surpassing the most ambitious expectations of the stock show management itself, the Pacific International Livestock Exposition closed its entries at noon on October 15 with an average of 60 per cent increase over last year in all classes of breeding stock.

So overwhelming was the volume of entries that poured in from all points of the compass the last few days, and particularly at the eleventh hour of the last day, that the rejocing of the busy staff in stock show headquarters in the Northwestern Bank building was turned to dismay as it became evident that the management would be confronted with no easy problem in providing housing and accommodations for the mammoth assemblage of exhibits that were being officially listed.

General Manager O. M. Plummer immediately called the Pacific International's building committee together for a consideration of the emergency. Although the big pavilion completed just in time for last year's show covers an area of six acres, it was obvious that even by reducing the aisle space and remodeling the stalls and pens to secure the maximum of accommodations, there would still be a shortage of shelter for the tremendous total of pure bred exhibits that will begin pouring into Portland from all the Pacific coast and intermountain states and from Western Canada a few days before the opening of the exposition on November 12.

After a strenuous session of figuring and planning it was decided that temporary annexes covering approximately two acres would have to be built and fitted with stalls and pens, these taking the form of extensions of the big beef and dairy barns at either end of the stock show stadium, and an enlargement of the sheep, swine and hog division at the rear.

"We are not certain as to the details as to just how we are going to do it," said Mr. Plummer the other day, "but we will have accommodations ready for all our entries by the time the show is open, and while it is going to make us hustle to take care of the overwhelming excess, we are mighty glad to have this gratifying surplus, which will make our approaching show one of the largest events of its kind ever staged anywhere and a triumph for everyone interested in the livestock industry here in our Western country."

Leading all other classes in the entries for this year's Pacific International are the Jerseys, with 346 entries, and the Shorthorns, with 324 exhibits, are a close second. In the dairy division, the Holstein entries are almost as heavy as the Jerseys, with a little less than 300 exhibits; the Guernseys will have 150 and the Ayrshires 75. There will be some 60 milking Shorthorn exhibits and a herd of Red Polleds.

In the beef classes, second to the Shorthorns will be the Herefords with entries numbering well above the 200 mark. In the Aberdeen-Angus class, represented last year by only three or four animals, there will be upward of 75 exhibits and there will be a herd of Red Polleds.

In the swine division, more than twice as many animals are listed as last year, and there will be an increase of 50 per cent in the sheep and goat sections. The horse division will show a 40 per cent increase, and the exhibits of the boys' and girls' livestock clubs will be 50 per cent larger than last year.

STOCK SHOW MEN RUSH TO FIND ENTRY SPACES

Beyond the most optimistic predictions of the livestock enthusiasts of the Northwest, and surpassing the most ambitious expectations of the stock show management itself, the Pacific International Livestock Exposition closed its entries at noon on October 15 with an average of 60 per cent increase over last year in all classes of breeding stock.

So overwhelming was the volume of entries that poured in from all points of the compass the last few days, and particularly at the eleventh hour of the last day, that the rejocing of the busy staff in stock show headquarters in the Northwestern Bank building was turned to dismay as it became evident that the management would be confronted with no easy problem in providing housing and accommodations for the mammoth assemblage of exhibits that were being officially listed.

General Manager O. M. Plummer immediately called the Pacific International's building committee together for a consideration of the emergency. Although the big pavilion completed just in time for last year's show covers an area of six acres, it was obvious that even by reducing the aisle space and remodeling the stalls and pens to secure the maximum of accommodations, there would still be a shortage of shelter for the tremendous total of pure bred exhibits that will begin pouring into Portland from all the Pacific coast and intermountain states and from Western Canada a few days before the opening of the exposition on November 12.

After a strenuous session of figuring and planning it was decided that temporary annexes covering approximately two acres would have to be built and fitted with stalls and pens, these taking the form of extensions of the big beef and dairy barns at either end of the stock show stadium, and an enlargement of the sheep, swine and hog division at the rear.

"We are not certain as to the details as to just how we are going to do it," said Mr. Plummer the other day, "but we will have accommodations ready for all our entries by the time the show is open, and while it is going to make us hustle to take care of the overwhelming excess, we are mighty glad to have this gratifying surplus, which will make our approaching show one of the largest events of its kind ever staged anywhere and a triumph for everyone interested in the livestock industry here in our Western country."

Leading all other classes in the entries for this year's Pacific International are the Jerseys, with 346 entries, and the Shorthorns, with 324 exhibits, are a close second. In the dairy division, the Holstein entries are almost as heavy as the Jerseys, with a little less than 300 exhibits; the Guernseys will have 150 and the Ayrshires 75. There will be some 60 milking Shorthorn exhibits and a herd of Red Polleds.

In the beef classes, second to the Shorthorns will be the Herefords with entries numbering well above the 200 mark. In the Aberdeen-Angus class, represented last year by only three or four animals, there will be upward of 75 exhibits and there will be a herd of Red Polleds.

In the swine division, more than twice as many animals are listed as last year, and there will be an increase of 50 per cent in the sheep and goat sections. The horse division will show a 40 per cent increase, and the exhibits of the boys' and girls' livestock clubs will be 50 per cent larger than last year.

STOCK SHOW MEN RUSH TO FIND ENTRY SPACES

Beyond the most optimistic predictions of the livestock enthusiasts of the Northwest, and surpassing the most ambitious expectations of the stock show management itself, the Pacific International Livestock Exposition closed its entries at noon on October 15 with an average of 60 per cent increase over last year in all classes of breeding stock.

So overwhelming was the volume of entries that poured in from all points of the compass the last few days, and particularly at the eleventh hour of the last day, that the rejocing of the busy staff in stock show headquarters in the Northwestern Bank building was turned to dismay as it became evident that the management would be confronted with no easy problem in providing housing and accommodations for the mammoth assemblage of exhibits that were being officially listed.

General Manager O. M. Plummer immediately called the Pacific International's building committee together for a consideration of the emergency. Although the big pavilion completed just in time for last year's show covers an area of six acres, it was obvious that even by reducing the aisle space and remodeling the stalls and pens to secure the maximum of accommodations, there would still be a shortage of shelter for the tremendous total of pure bred exhibits that will begin pouring into Portland from all the Pacific coast and intermountain states and from Western Canada a few days before the opening of the exposition on November 12.

After a strenuous session of figuring and planning it was decided that temporary annexes covering approximately two acres would have to be built and fitted with stalls and pens, these taking the form of extensions of the big beef and dairy barns at either end of the stock show stadium, and an enlargement of the sheep, swine and hog division at the rear.

"We are not certain as to the details as to just how we are going to do it," said Mr. Plummer the other day, "but we will have accommodations ready for all our entries by the time the show is open, and while it is going to make us hustle to take care of the overwhelming excess, we are mighty glad to have this gratifying surplus, which will make our approaching show one of the largest events of its kind ever staged anywhere and a triumph for everyone interested in the livestock industry here in our Western country."

Leading all other classes in the entries for this year's Pacific International are the Jerseys, with 346 entries, and the Shorthorns, with 324 exhibits, are a close second. In the dairy division, the Holstein entries are almost as heavy as the Jerseys, with a little less than 300 exhibits; the Guernseys will have 150 and the Ayrshires 75. There will be some 60 milking Shorthorn exhibits and a herd of Red Polleds.

In the beef classes, second to the Shorthorns will be the Herefords with entries numbering well above the 200 mark. In the Aberdeen-Angus class, represented last year by only three or four animals, there will be upward of 75 exhibits and there will be a herd of Red Polleds.

In the swine division, more than twice as many animals are listed as last year, and there will be an increase of 50 per cent in the sheep and goat sections. The horse division will show a 40 per cent increase, and the exhibits of the boys' and girls' livestock clubs will be 50 per cent larger than last year.

Make Pacific International Livestock Exposition Week NOVEMBER 13 to 20

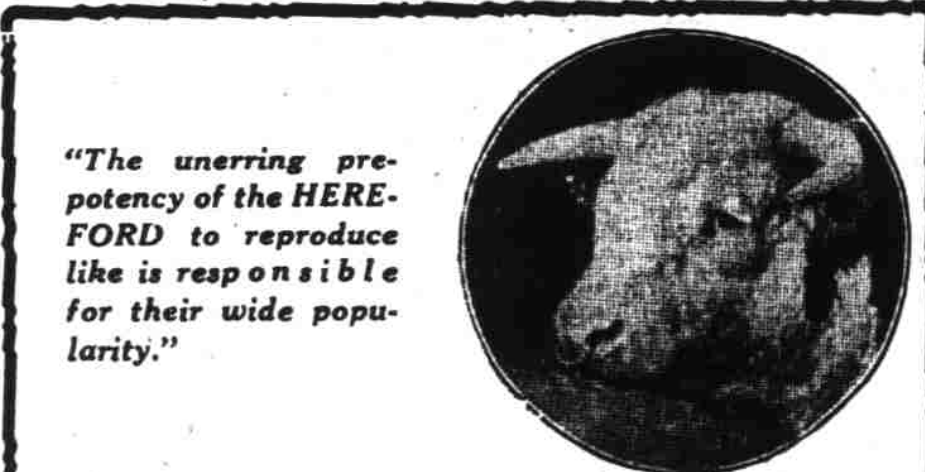
The Big Week in Portland 60% more entries this year than last is the prediction of O. M. Plummer, Manager. If you are interested in Pure Bred Dairy and Beef Cattle, Hogs, Horses, Sheep and Goats, set aside these dates for your trip to Portland. Also visit the Portland Union Stockyards and see the Public Livestock Market in full operation. A cordial welcome awaits all visitors. Portland Union Stockyards Co. North Portland, Oregon

Promoting and Perpetuating the Livestock Industry NOT a farmer lives in the West who hasn't a vital interest in the welfare and further development of the livestock industry. The Pacific International Livestock Exposition is a clearing house for bigger and better livestock production, bringing together breeders and feeders from all parts of the country for exhibiting and demonstrating the methods of raising pure bred dairy and beef cattle, hogs, sheep, goats and horses. Portland, Oregon November 13 to 20 Reduced Railroad Rates

IMMIGRATION HEAD AT ELLIS ISLAND FILLS HIS BERTH By Westbrook Pegler (United News Staff Correspondent) New York, Oct. 23.—Apples are rotting on the ground and potatoes are sprouting in the soil around about Geneva, N. Y., because there aren't enough "hands" to make the harvest.

IF YOU NEED NURSERY STOCK Please Mark and Return and We Will Send You Prices WOODSTOCK NURSERY 5803 WOODSTOCK AVENUE PORTLAND, OR.

Let's go The sure way to put pep into your job on any day is to get into a FISH BRAND Reflex Slicker There is a FISH BRAND garment for every kind of wet work or sport. \$400,000 Exposition Buildings. \$75,000 in Premiums. 2,500 Head of Livestock. Dairy Products Show in connection. Daily Auction Sales. Nationally Known Judges. Student Judging Contests. Horse Show Each Night.



"The unerring potency of the HEREFORD to reproduce like is responsible for their wide popularity."

Northwest Hereford Breeders will sell at public auction 150 Registered Herefords—150 Western Royal Livestock Show Spokane, Wash., Thursday, November 4, 1920. Auctioneer—Col. Harry C. Cranke, Nespecke, Idaho. Northwest Livestock Show Lewiston, Idaho, Thursday, November 11, 1920. Auctioneer—Col. Harry C. Cranke, Nespecke, Idaho. Pacific-International Livestock Exposition Portland, Oregon, Friday, November 19, 1920. Auctioneers—Arthur W. Thompson, York, Nebraska, and Harry C. Cranke, Nespecke, Idaho.

RUSSELL Tractors and Threshers Are Standard Equipment Wherever Machinery Is Used—Sold From Portland Continuously Since 1882 Call at our warehouse and allow us to explain why the Russell "Three-Speed" Transmission Tractor is proving so successful, also get information concerning our up-to-date Threshers, Hullers and Sawmills. The A. H. Averill Machinery Co. 324 Belmont St. Portland, Oregon

Wisconsin Leads In Hemp Production Kentucky once led in hemp production, but has turned to more profitable crops and relinquished the lead to Wisconsin, according to the United States department of agriculture. The Badger state cultivated 7000 acres, half the country's total, this year, followed by Minnesota, Michigan, Ohio and California, with Kentucky sixth.

SKY LIGHTS FOR CHICKEN HOUSES 25 in. x 10 in., price \$2.00. This is the size recommended by the Western Washington Experiment Station. We carry them in stock for immediate shipment. Our Large Illustrated Catalogue showing full line of building materials free on request. O. B. WILLIAMS CO. ESTABLISHED 1890.