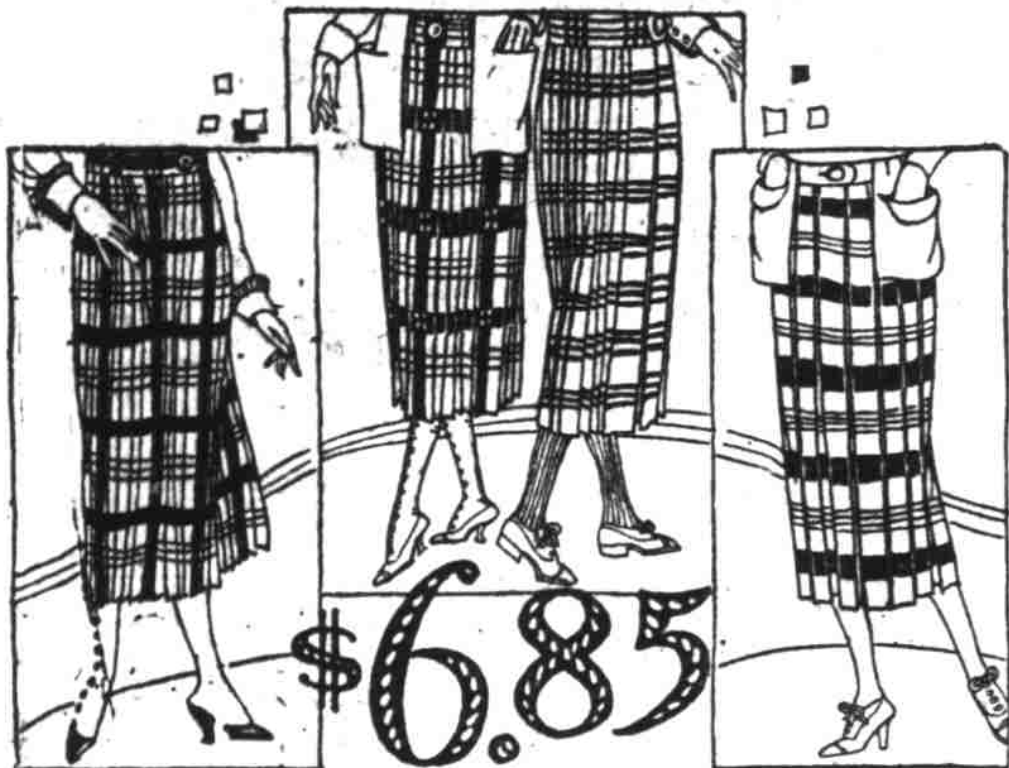


Rue de la Paix Chocolates—Always Fresh—Always Supreme—Street Floor

Lipman Wolfe & Co.
"Merchandise of Merit Only"

Economy Basement Store
Everything for Cash—Everything for Less

Month-End **CLEARANCE**



\$6.85

At a Great Price Concession
We Purchased These

Broadhead Plaid Skirts
the Very Latest Patterns, Made Up in the
Newest Pleated Styles

Box Pleated Box and Knife Pleats Combined Knife Pleated

The Saving is Unprecedented

—The rich autumn shades, the harmonious color combinations and the smart cut of these Skirts will delight you—made of Jamestown and Broadhead plaids, the standard for wear and the leaders in style.

—ECONOMY BASEMENT, Lipman, Wolfe & Co.

100 Lovely Trimmed Hats



Tuesday in a Sale at **\$3.95**

The Best Looking Hats the Season Has Presented at Anywhere Near This Price

—Velvet and combination Hats in solid and combination colors, some trimmed with touches of silver and gold, others with velvet and soft glycerine ostrich. All are refined and becoming in color, line and trimming. Very desirable for wear with tailored suits or dresses.

—ECONOMY BASEMENT

Satin Striped Fiber Silk 79c

Half Price —A good assortment of colors in light and dark shades; a quality of material that will assure quick buying at this price—a fraction less than half. Come early.

—ECONOMY BASEMENT, Lipman, Wolfe & Co.

Scrim, 29c Marquette, 49c

—Tape edge Curtain Scrim, in white, cream and ecru. 36 inches wide. —Mill remnants of figured Marquette in madras patterns—blue rose, brown and mulberry.

All Curtain and Drapery Remnants, 1-2 Price

—An offering that is assured of ready disposal by reason of its big savings. Curtain Scrims, Nets, Madras, Silkoline, Cretonnes and Drapery materials.

—ECONOMY BASEMENT, Lipman, Wolfe & Co.

Odd Lots of Hose

Women's 29c

—Of lisle and cotton in black and white; regular and extra sizes, but not all sizes in each lot. A fine quality taken from our regular stock.

Child's 39c

—Black and white, lisle and cotton Stockings of various weights and all good quality. All sizes in the lot.

Child's Underwear, Odds and Ends, 59c

—One of the biggest value-giving lots in the month-end sales. Fall and winter Underwear, consisting of vests and pants; all of the finest quality. Nearly all sizes to start the day with.

—ECONOMY BASEMENT, Lipman, Wolfe & Co.

Wash Goods Remnants, 1/2 Price

—Our entire stock of Wash Goods Remnants included and they won't last long at the prices asked. Ginghams, percales, white goods, figured voiles; in fact, every wanted-weave; all in good, desirable lengths.

—ECONOMY BASEMENT, Lipman, Wolfe & Co.

Charge Purchases

made Tuesday will appear on statements rendered

November First

Tuesday Begins the First Month-End

Lipman Wolfe & Co.
"Merchandise of Merit Only"

Unadvertised Bargains

will be found on every floor. Look for the month-end

Clearance Signs

CLEARANCE of the Fall Season

SO FAST do the Fall styles sell, that even thus early in the season we are re-grouping many short lines at substantial savings. And for good measure we have added heaps of staple articles—all of standard quality—all at savings even greater than you would expect, even in a month-end clearance. Come early Tuesday and secure the widest choice in these extraordinary value-giving specials.

Georgette and Voile Blouses Reduced



for the Month-End Clearance to

\$4

LOVELY georgette and voile Blouses in beautiful beaded, embroidered and lace-trimmed styles—novelty effects—others plain, attractively finished with tucking and hemstitching. In the popular colors of flesh, white, bisque, navy and peach. Very specially priced for this sale at \$4.

—Third Floor, Lipman, Wolfe & Co.

Animal Scarfs

To Clear Away

\$12.50

Silk Lined

—Very attractive Manchurian wolf and kit coney Animal Scarfs in brown and taupe, silk lined. \$12.50 is an exceptionally low price for these smart Scarfs.

Third Floor, Lipman, Wolfe & Co.

Dresses of Serge and Satin

Charmeuse

\$33.45

A Special Sale Group Made Even More Special By Added Reductions.

—Smart serge and satin charmeuse Dresses for fall. In this special group of dresses are the latest models and styles—lovely dresses in long-waisted and ruffled tunic effects—some beautifully embroidered, others lace trimmed—and still others in the popular apron style. In beautiful shades of

Brown Plum Dark Green and Navy

—Third Floor, Lipman, Wolfe & Co.



DAISY CLOTH

2000 Yards Genuine Amoskeag White Daisy Flannel **35c**

—This is the heavy, full nap, long wearing twilled weave, the very best for gowns, pajamas and children's wear.

Fancy Outing Flannel **39c**

—Of extra heavy weight is this new fancy outing, offered at just about present wholesale cost. Attractive stripes, checks and plaids on light and medium grounds.

2-lb. Cotton Batts **\$1.25**

—"Snowflake" batts, made in Oregon, of pure white cotton. Full comforter size, 72x84 inches. It's time to think of winter comforts, and the time to save on your batts is in this month-end sale.

—Second Floor, Lipman, Wolfe & Co.

Jersey Jackets

\$12.50

Beautiful Heather Mixtures in Smart Styles to Close

—Clever women have been waiting for this opportunity to secure one of those smart Jersey Jackets. In heather mixture, some with leather belts, others with self material belts. Not all sizes. You save accordingly—\$12.50.

—Third Floor, Lipman, Wolfe & Co.

Women's Gloves \$1.15

—Twenty-five dozen pairs of slightly soiled and damaged Gloves, all in good repair. The lot consists of kids, capes and mocha in black, white and colors. All sizes. No fittings—no exchanges. Special **\$1.15**.

—Street Floor.

Extraordinary Savings on Women's Globe Union Suits

\$2.19 to \$6.50

—These are broken lines, that's why you can secure them at so much less than regular. Included are all styles in knee or ankle length Union Suits in one material or another, and all are the extra good Globe garments tailored with flat lock seams—they fit and hold their shape.

Cotton Union Suits	...	\$2.25	extra sizes	\$2.65
Other Cotton Union Suits	...		extra sizes	\$2.25
Fleeced Union Suits	...	\$2.19	extra sizes	\$2.35
Merino Union Suits	...	\$3.50	extra sizes	\$4.19
Merino Union Suits	...	\$3.50	extra sizes	\$3.50
Mercerized Union Suits	...	\$3.50	extra sizes	\$4.25
Silk and Wool Union Suits	...	\$3.65	extra sizes	\$4.39
Silk and Wool Union Suits	...	\$6.50	extra sizes	\$6.50
Silk and Wool Union Suits	...	\$5.50	extra sizes	\$5.85

—Street Floor, Lipman, Wolfe & Co.

Misses' Knit Union Suits

\$1.29

—High neck, long sleeve, ankle length Union Suits, broken lines in fall and winter weights.

Women's Union Suits

89c

—Low neck, sleeveless Union Suits in pink and white—loose and tight knee, not all sizes in each kind.

—Street Floor.

Child's Underwear Samples

\$1.09

Less Than Wholesale —Sample vests, drawers and union suits, not all sizes, but fall and winter weights of the highest standard makes.

Black and White Checks

—Forty-eight to 54-inch checks in strictly all wool quality and union mixtures—at a clean-up price—just as desirable as if you paid the original price. Fine for dresses and children's coats.

To Close, Yard **\$2.95**

—Second Floor, Lipman, Wolfe & Co.

Women's Hose

Fiber Silk **95c** Plain or Lace

Seam Up the Back

—Broken sizes in fine Hose, lace pattern in field mouse and plain Hose in black, white and cordovan.

—Street Floor, Lipman, Wolfe & Co.

Tuesday Is NOTIONS DAY

In the Month-End Clearance

BUTTONS—3 Cards, 25c And Others at 19c, 38c and 79c the Dozen —Several thousand cards of odds and ends in Pearl, Bone, and Ivory buttons at very special prices.

—And many unadvertised specials.

—Street Floor Lipman, Wolfe & Co.

Corsets

Odd Lots **\$3.65** of Standard Makes

Reduced for Immediate Clearance

—Excellent coutil Corsets with low and medium bust, elastic at bottom of skirt either front or back, finished at top with lace and embroidery. Sizes 21 to 36 in one style or another.

Front Lace Corsets **\$1.95**

—Sizes 26 to 30 in odds and ends.

—Fourth Floor, Lipman, Wolfe & Co.

THIS STORE USES NO COMPARATIVE PRICES—THEY ARE MISLEADING AND OFTEN UNTRUE