

# Oregon Man Produces Fine New Type of Prune

**OREGON GROWER HAS DEVELOPED NEW TYPE PRUNE**

Salem, Sept. 25.—The development and perfection of a new prune to be known as the "New Oregon" prune which, it is claimed, is destined to revolutionize the prune industry in this state, was announced by Andrew Vercher, Polk county orchardist, at a banquet at the Marion hotel here Thursday noon, following a tour of inspection of his orchards by prune growers and buyers from all sections of the Willamette valley.

The New Oregon prune is said to be somewhat similar to that of the Petite variety, except that it is larger and more uniform in size than either the Petite or the Italian prune, and is claimed to be superior in every respect to any other prune yet introduced into this section.

**SEEDLING DEVELOPED**

The New Oregon was developed from a seedling found on Vercher's farm several years ago and is said to be a cross between the French and Italian varieties. Satisfied in his own mind that he had found a prune that would command the attention of growers everywhere, he set about developing his product, bringing it into perfection over the several years intervening between the time of its discovery and the announcement of the new find, at the banquet Thursday.

For drying purposes Vercher claims superiority for his product over all other varieties, producing 22 pounds of dried fruit out of 60 pounds of the fresh fruit. In the years since the discovery of the new prune, Vercher has built up an orchard of several acres of the new variety, the tree being larger and stronger than the ordinary variety of prune.

**INTEREST GAINING**

Prune men who visited the Vercher orchards Thursday expressed great enthusiasm over the new member of the prune family. M. McDonald of the Oregon Nursery company, who has watched the development of the new prune for several years, declares that he is convinced of its superior qualities as a commercial product. He declares that it has a great many advantages over the Italian prune so commonly grown in the Willamette valley, one of its greatest advantages being found in the fact that it does not crack so easily from excessive moisture as does the Italian prune.

**Back to the Farm After Working for Hart's Nomination**

Aberdeen, Wash., Sept. 25.—J. B. Benn, former mayor and state senator, who looked after the gubernatorial campaign of Louis F. Hart in Grays Harbor county with as much diligence as he has done in years past for candidates for similar political preferment, like Cincinnatus of old, has gone back to agriculture. Benn is president of the Benn Cranberry company, which owns several tracts of income bearing plants at South Bay. The harvest is ready and Benn, who neglected an early start in order to help Hart, is now engaged as fully with cranberries as he was with political propaganda.

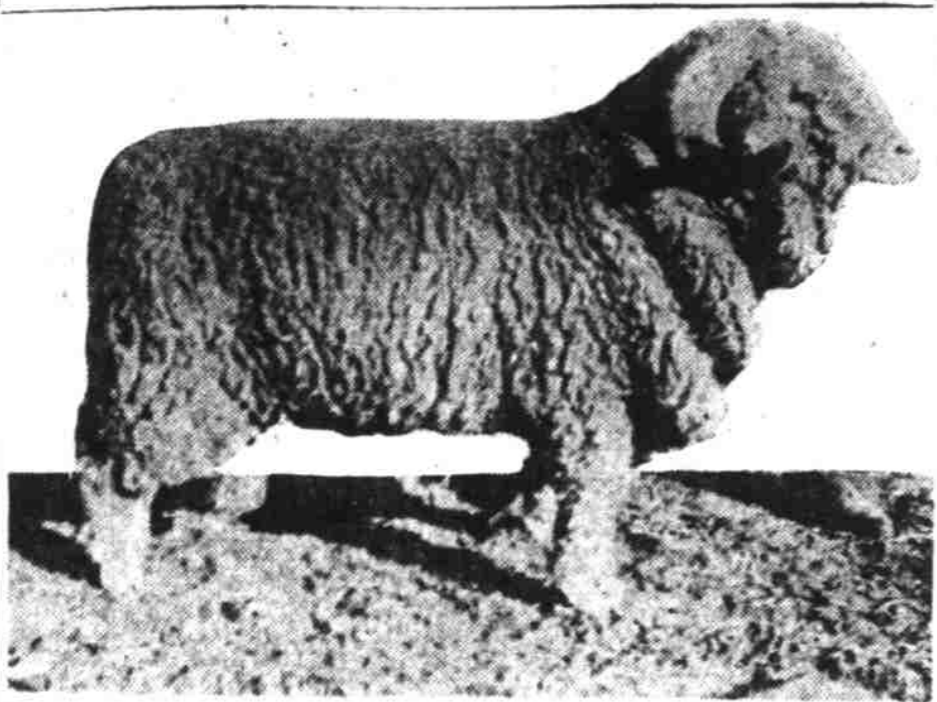
The crop of cranberries this year in the South Bay country is estimated as promising a greater yield than any year heretofore.

**Comparative Prices Given for 1919 Prunes**

The Willamette Valley Prune association announces the following comparative prices secured for last year's prunes:

Willamette Valley Prune Association	Salem Fruit Union
20-30	17.25
30-40	17.50
40-50	18.00
50-60	18.50
60-70	19.00

**PURE-BRED SHEEP BOUGHT**



Rambouillet ram bred by Bullard Bros. of California and purchased by O. Callaghan Bros. of Powell Butte, Or., for \$850 at the Salt Lake sale. The second highest priced ram at this sale.

**RAM SOLD OREGON GROWER FOR \$1300**

By R. A. Ward  
(Special Agricultural Correspondent)

Eastern Oregon has the distinction of having secured the two highest priced rams sold at the fifth annual ram sale of the National Wool Growers' association, held in Salt Lake City, Utah, August 30 to September 2. The top price at the sale was \$1300, paid by the Cunningham Sheep company of Pilot Rock, for a two-year-old Rambouillet ram collected by Bullard Brothers of California. This was an exceptionally fine ram and goes to head a choice collection of ewes owned by the Cunningham outfit, which was recently purchased by Fred Faulkner of Enterprise.

The second highest priced ram at the sale was a yearling, also assigned by Bullard Brothers of California, but was purchased by J. P. O'Callaghan of Powell Butte, Oregon, for \$850. This Rambouillet is one of the choicest specimens of the breed ever brought into the Central Oregon country. O'Callaghan Brothers maintain a herd of some 500 registered Rambouillet ewes as well as range bands of some 1000 range ewes. Central Oregon is rapidly becoming the breeding center for Rambouillet sheep. There are some eight breeders in the territory and some very choice individual sheep, especially the new O'Callaghan ram and the First National bank ram, which was brought in last spring. Breeders are fitting a collection of ram lambs for the Pacific International, which will be the first entrance of Central Oregon stock at the big show.

The annual ram sale at Salt Lake was very satisfactory, considering financial conditions which precluded high prices in the sheep industry. However, nearly every sheep offered was sold, and this indicates that people still believe that

**COOS BREEDERS ACTIVE IN FAIR**

Marshfield, Or., Sept. 25.—Holstein and Jersey cattle breeders of Coos county are sending a carload of 20 head of cattle to the state fair and they expect to have some prize winners among the state entries.

Those showing Holsteins from Coos Bay farms are Dr. George E. Dix, L. J. Simpson, Archie Philip, W. G. Ingram, Herbert Haynes and Julius Kruse. The breeders of the Coquille valley section who are sending Jerseys are Olof Aasen, Ralph Bunn, T. P. Hanley, W. C. Cutler, Adan Guthardt, George E. Hampton, John Carl, Finley Schroeder and Theodore Clinton.

The Marshfield and the Coquille creameries will both enter butter in the dairy exhibits and 15 samples of cheese will be shown in competition with the other cheese factories of the state. Coos county will also have a community exhibit showing the farm products and resources of the county.

**Umatilla to Have 4 Junior Stock Judges**

Umatilla county will be represented in the stock judging contest for Juniors at

**Co-operation**

By R. C. S.

Co-operation is like unto a fire, first but a tiny spark, but when breathed upon by favorable winds, growing into a living flame. When speculators attempt to smother it with their wet blankets of opposition, it is as though these blankets were soaked in oil, only causing the flame to grow the brighter, till finally it becomes a dominant being, giving off warmth and renewed life to those who would share it. Cooperation is a spark of life, to those who have so long felt the cold breath of speculation.

The Oregon state fair by Leslie Thompson of Umatine and Donald Kirk of Umatine for individual stock judging. In team judging Hermiston will have a team of two boys and one girl, James Hall, Carl Bessel and Miss Dorothy Briggs, who are reported as experts by the county farm bureau agriculturist, Fred Bennion. Miss Briggs is the only girl in the county who is a member of the county club.

The most profitable use is made of beet tops when they are siloed and fed with alfalfa hay or other forage and possibly supplemented with grain or concentrate feeds.

**FLIES FLEE FROM "WOOD-LARK" REPELLENT**



EFFICIENT AND SIMPLE PUT UP IN NEEDED SIZES

Quart, 80c; Half Gallon, \$1; Gallon, \$1.75. Order from your dealer. If he hasn't it we will send you one gallon, all charges paid, for \$1.75. Postage Stamps Accepted. Prepared by

CLARKE-WOODWARD DRUG CO., Portland, Oregon.

**Sunflowers Yield 54 Tons Per Acre In Harney County**

Burns, Or., Sept. 25.—The possibilities of Harney county soil are being demonstrated in a striking manner by Superintendent O. B. Shattuck of the experiment station near Burns. Among other record crops at the station, Shattuck reports a yield of over 54 tons of sunflowers per acre with the use of only 19 acre inches of water. On dry land, with the seed planted one month late, the yield is from 15 to 20 tons per acre. Stockmen of this section are closely watching results of the sunflower crop, fed as silage from Harney county's pioneer silo, which is being erected on the farm of Ralph Peabody under auspices of the First National bank of Burns.

Visit our Exhibit at the Oregon State Fair and learn about the Beeman Garden Tractor, the Samson Tractor, and GMC Trucks

**BEEMAN GARDEN TRACTOR**

Takes the Place of a Horse

Plows, Harrows, Cultivates — Operates Cream Separator, Pump, Washing Machine, Etc.

**The Beeman Garden Tractor**

Will also do anything that a four-horsepower stationary gasoline engine will do

Handy on a farm as well as on a garden tract

Call or write for full information and catalog.

**WENTWORTH & IRWIN**  
S. E. Cor. Second and Taylor  
Portland, Or.

**RUSSELL Tractors and Threshers**

Are Standard Equipment Wherever Machinery Is Used—Sold From Portland Continuously Since 1882

Call at our warehouse and allow us to explain why the Russell "Three-Speed" Transmission Tractor is proving so successful, also get information concerning our up-to-date Threshers, Hullers and Sawmills

**The A. H. Averill Machinery Co.**  
324 Belmont St.  
Portland, Oregon

**MAIL THIS COUPON**

I would like to receive Free Catalogue describing Send me full particulars on "Russell" Machinery, machinery checked [X]

Russell Tractors and Engines  Birdsell Clover and Alfalfa Cutters  Threshers and Supply List

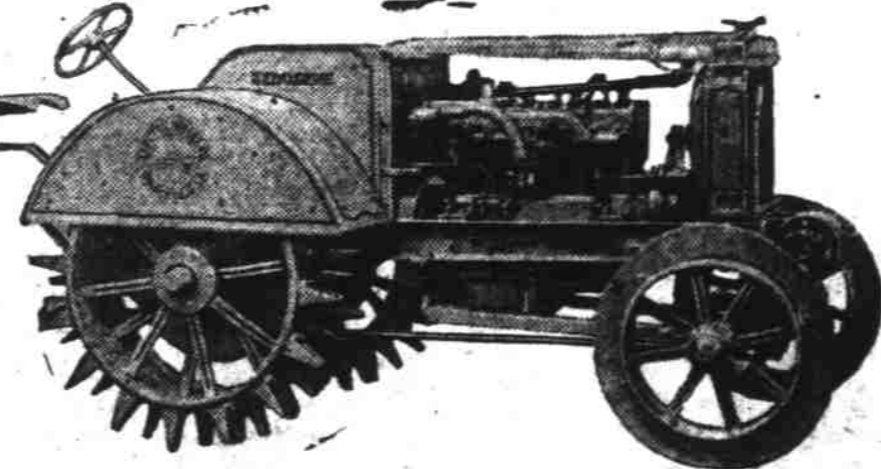
Name \_\_\_\_\_  
Address \_\_\_\_\_

SEE US AT THE STATE FAIR

**ALLWORK TRACTOR No. 1**

**ALLWORK TRACTOR No. 2**

TRACTOR DRILLS — TRACTOR PLOWS



**J. A. FREEMAN & SON**  
315 BELMONT ST., PORTLAND, OREGON

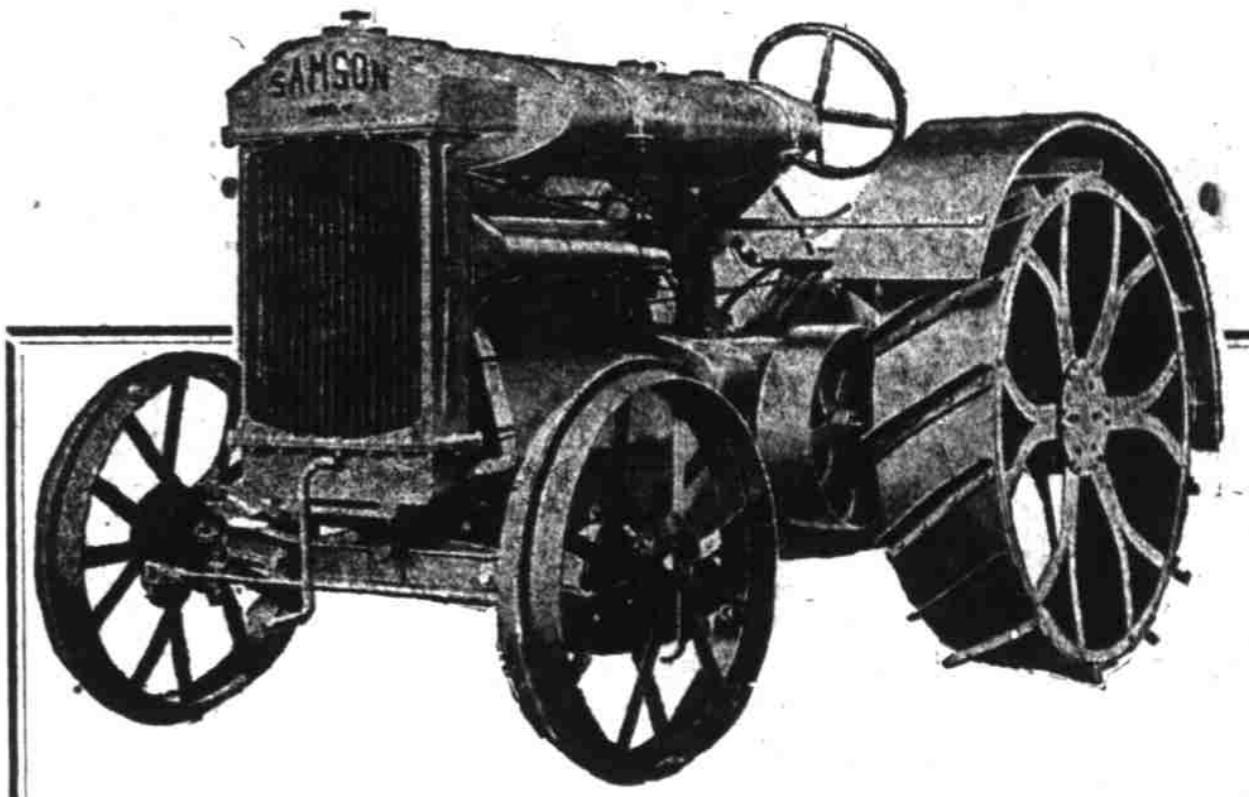
Meet Us at the Oregon State Fair

# The Samson Tractor

—AND—

# Samson Trucks

and Other Samson Products



The Samson Tractor—Model M

## Here You Have It—

The Ideal Tractor for the Western Farmer

**Horsepower**

The Farmer buys a tractor to do the work of horses and consequently he expects to get horsepower, heavy draft horsepower, both for the drawbar and the belt. The SAMSON MODEL M provides that—and at a most reasonable cost.

**Unusual Value**

The unusual value in the SAMSON is the direct result of QUANTITY PRODUCTION. The finest engineering talent and workmanship have helped make the SAMSON superior—it is a close-coupled power unit all by itself.

**COMPARE IT PRICE FOR PRICE—PERFORMANCE— ETC., WITH ANY TRACTOR MADE AND YOU'LL HAVE NO OTHER**

# SAMSON TRUCKS

**Something Different**

Here we have something DIFFERENT in Trucks. The SAMSON represents new ideas in Trucks for city, town and country use, and at prices within the reach of EVERYBODY. A combination of wide utility and rare economy in first cost and upkeep.

**For General Use**

SAMSON TRUCKS are of two sizes—¾ and 1¼-ton capacity. Just the truck the farmer has needed for general use, and the ideal truck for merchants and manufacturers—special bodies for both farm and city use.

**FARM IMPLEMENTS**

The SAMSON TRACTOR COMPANY carries a complete line of farming implements. Our tremendous buying power, modern facilities and quantity production enable us to make the right price for all SAMSON products.



**Samson Tractor Co.**  
of California  
**VICK BROTHERS**  
SALEM, OREGON

Distributors of Samson Products for  
Linn, Marion, Yamhill, Polk, Lincoln, Benton and Lane Counties

When at the State Fair Sept. 27-Oct. 2

Do Not Fail to See and Examine the

# Russell

**Tractors and Threshers**

Built Since 1842—Sold from Portland Since 1882

For the past 38 years the biggest users of power machinery in the entire Northwest have reported that Russell tractors and threshers have stood the severest tests and have given unequalled service. There is no guesswork with the Russell. It has proven its dependability by years of hard service.

**The Russell Is the Frictionless Tractor**

It is a well known fact that a lessening of friction increases power and lengthens the life of the machinery. In the Russell friction has been reduced to a minimum through a liberal use of Timken roller bearings running in oil. It means that maximum power and service is obtained. For year in and year out performance the Russell is the most economical tractor for your farm.

**THE A. H. AVERILL MACHINERY CO.**

Branches: Spokane, Wash.; San Jose, Cal.; Great Falls, Mont.  
320 Belmont St., Portland, Oregon