

HARD SURFACING PACIFIC HIGHWAY FAR FROM FINISH

Several Uncompleted Sections Remain Between Multnomah County Line and Eugene.

When outstanding contracts are completed this season there will remain several incomplete sections of the Pacific highway between Portland and Eugene.

Going south, the first gap will be between the Multnomah county line and Oregon City via Oswego. This section has been graded and instead of being paved this year will probably be gravelled. At Oregon City a new bridge across the Willamette will be required, also a new bridge between Oregon City and Canemah.

The next uncompleted section will be between Canby and Aurora. A new grade has been built here, which will be gravelled this summer.

From Aurora to Salem will be a continuous pavement. The next break in the line of pavement will be between Salem and a point seven miles north of Jefferson. This section has been regraded by Marion county, but no plans for paving have been executed. It will probably be rockbed this season. From this point through Jefferson to Albany the highway will be paved.

Between Albany and Junction there is a long stretch on which nothing has been done and there is no immediate prospect of its being improved. The cause is some agitation to change the location of the highway in this section. An alternative route has been suggested. This would leave Harrisburg to one side and keep up the east side of the valley to Coburg, and thence to a connection with the west side branch of the highway south of Eugene, at Springfield.

In behalf of this route it is argued that it would serve a greater expense of country and avoid the expense of a new bridge and a long fill or trestle between Harrisburg and Junction.

HOW IS THE ROAD?

Inland Empire

Roads throughout Western Idaho, Eastern and Central Oregon and Southwestern Washington were given a thorough making by a general 12 hour rain which prevailed during the early part of the last week throughout this section of the Northwest and as a result have been considerably improved. The dirt roads in all regions were getting dusty and the recent precipitation has put a check on this condition which will last for several weeks.

With the exception of the general improvement in all routes due to the rain there is little change in the road conditions throughout the Inland Empire over those of last week. The Pennewahe ferry route to Spokane is again open and the ferry operating, but construction work makes this road inadvisable as compared to the Lyons Ferry route according to the Tri-State Automobile club report. The road report in detail follows:

Walla Walla to Spokane via Lyons Ferry and Riverville—Good with the exception of Lyons ferry to Wahtucna. This is 14 miles out up and rocky.

Walla Walla to Spokane via Central Ferry and Colfax—Passable but had owing to construction.

Walla Walla to Spokane via Pennewahe ferry—Ferry operating.

Walla Walla to Lewiston via Delaney and Pomeroy—Fair. Owing to construction work bad for several miles between Daxton and Delaney. By leaving route at Watsburg and going to Pomeroy via Starbuck and Delaney construction work can be avoided. This would increase the distance several miles but the traveling is much better.

Lewiston to Spokane—Good; one detour at Stoptoe.

Lewiston to Grangeville via Waha—Fair.

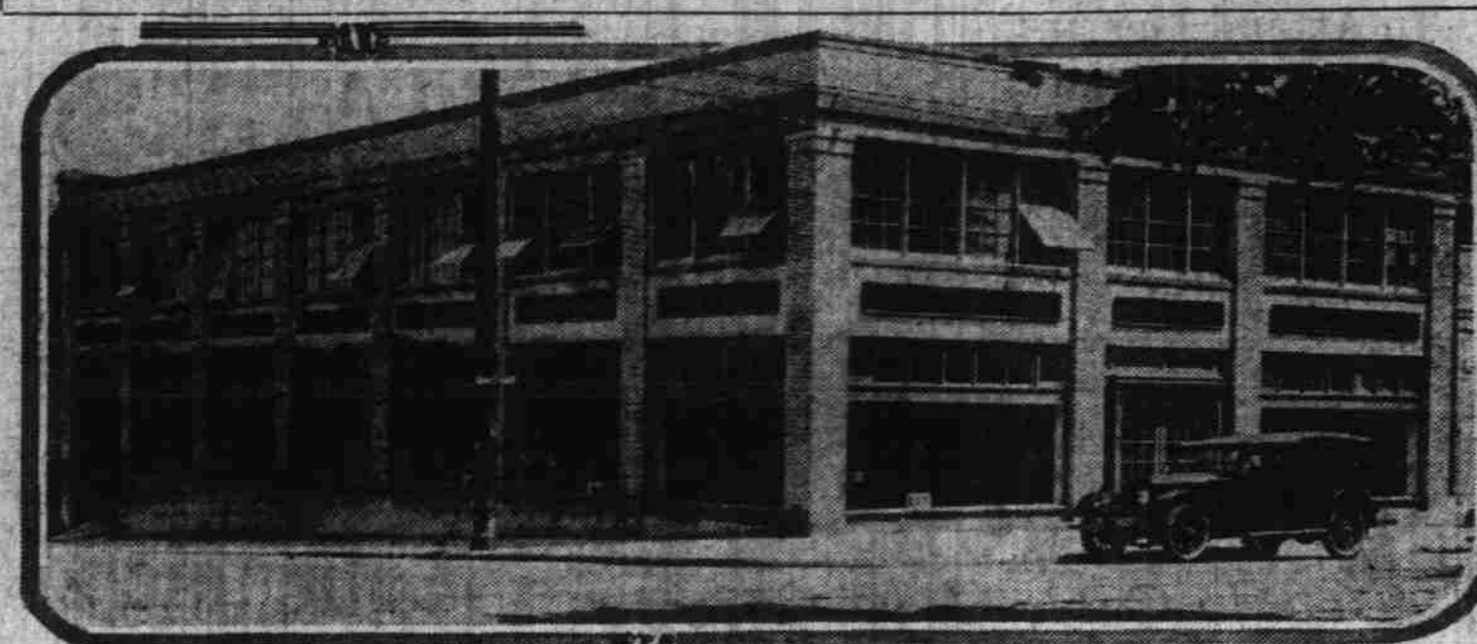
Lewiston to Anatone via Astor—Fair.

Lewiston to Juliaetta via Spalding—Fair.

Lewiston to Boise via Whitebird—Closed.

Walla Walla to Seattle—Walla Walla to Wallula good. Wallula to Burbank,

MOTOR COMPANY OCCUPIES NEW HOME



New home of the McCracken Motor company, at Fourteenth and Morrison streets. The company has the distribution for Premier and Pan-American motor cars, and Moreland and Commerce trucks. The McCracken company recently moved to the new building from the brick structure at Fourteenth and Burnside streets.

necessary to go by way of Hoover ferry landing and up road next to river to Burbank. Rest of road generally good. Squawmie pass open and in good condition.

Walla Walla to Portland via Northbank road—Walla Walla to Wallula good. Wallula to Burbank, necessary to go by way of Hoover ferry landing and up road next to river to Burbank. Pasco to Stevens via White Salmon and Lyle generally good. Ferry to Cascade Locks from Stevens and take Columbia River highway to Portland. Do not use Major Creek out off between Lyle and White Salmon.

Walla Walla to Boise via Pendleton and Baker City—Good to Pendleton. Some mud and rough over Blue mountain between Pendleton and La Grande, but cars going through. La Grande to Baker City good.

La Grande to Walla Walla via toll gate—Road not open.

La Grande to Elgin via Imbler—Fair.

Walla Walla to Portland via Pendleton and Columbia River highway—Pendleton to Rock Creek and Wasco, The Dalles and Hood River, construction work between Hood River and Wyeth, cars may go through only before 7:30 a. m., at noon, after 2:30 p. m. and on holidays.

Via Echo, Lone and Lexington—Fair.

Pendleton to Pilot Rock and Uldah—Fair.

Pendleton to Bingham Hot Springs—Fair.

Central Oregon road to California—Good condition, either by way of Wasco, Bend, Klamath Falls, or Wasco, Bend and Lakeview.

Bend to Burns—Good.

Bend to Prineville—Good.

Prineville to Michael—Not open.

Bend to Sisters—Good.

Sister to Willamette valley—McKenzie Pass open about middle of June.

Southern Oregon

The Pacific highway between Foothills creek and Eche the new Rock Point bridge about two miles west of Gold Hill, under the Shell & Calvert contract, is rapidly nearing completion. The quarry crew at Rock Point has been laid off and the quarry closed because the laying of the hot stuff interferes with hauling any more rock, and the contractors are not yet prepared to lay rock on the road from the bridge to Gold Hill. The highway bridge over Sardinia creek, about three-quarters of a mile east of the Rock Point bridge, was closed to travel Saturday for two days, putting down a new floor that will be suitable for paving.

Portland-Seattle

On the Felida road no pavement will be laid this week on account of rain. One mile of the 4 1/2 to be paved has been completed.

Pacific highway to Woodland is in good condition for travel, with detour over Sarah-Ridgefield road via Ridgefield. Battle Ground road is closed from Brush Prairie to Battle Ground, giving detour from Brush Prairie via Hookman over gravelled road, also from Vancouver by way of Manor. A little muddy at present, but will be good again with a day or two of sunshine. Camas road closed, detour by Mill Plain and Grass Valley. Somewhat

slippery on account of wet. A day or two of good weather would put it in fair shape. East of Camas road in good condition.

Oregon

Barlow-Oakgrove—Open, Clackamas and Clear Lakes to Wapinitia; fair. Clear Lake to Government Camp, closed; no detour. Should be open across mountains June 20.

Santiam Wagon road—Foster to Upper Soda; open; bad. Upper Soda to summit, closed; no detour. Bridge across South Santiam should be completed June 15. Road should be open July 1.

Grants Pass-Crescent City—Open; good, including Hayes Hill. Still rough on Oregon mountain.

Crescent City-Port Orford—Open. Crescent City to Brookings, good. Rough sections elsewhere.

Merlin-Almeda—Open and good, Grants Pass to Almeda.

Willamette highway—Eugene to Rigdon, open, good; Rigdon to summit closed.

McKenzie highway—Eugene to Blue River, open, fair; Blue River to McKenzie bridge, closed by construction except at intervals for a few days. McKenzie bridge to summit, closed.

Lakeview-Silver Lake, Lakeview-Burns, Klamath Falls, Lakeview—Open, good.

Flora-Enterprise, Enterprise-Chico, Enterprise-Imnaha, Imnaha-River, Walla-Walla-Powwatha—All open, fair to good.

La Grande-Joseph, La Grande to Elgin—Open, good; Milam to Wallula, closed; probably for summer.

Medical Springs-Carson—Medical Springs to Martin bridge, open but poor. Martin bridge to Carson, closed; bridges bad.

Sparta-East Eagle—Open, Sparta to Lilly White, good; Lilly White to East Eagle, closed, no detour.

Baker-Cornucopia—Open; Baker to Carson, good; Carson to Cornucopia, poor but passable for autos.

CONSERVE GASOLINE

Conserve Fuel

Some motorists have gladly seen the plan for saving gasoline.

They see the need for having speed when showing off the highway.

But when they have a crowd, and saving gas has caused a howl!

They can't seem to miss a ride on nearby street or byway!

They're angry at the limitation implied by fuel conservation.

The chaps who know the fuel's empty have gone to mansion, house and shanty; have preached the word and all have heard.

But some are fretting out their lives, and dying slow of mental hives.

In such a huff to get the stuff they stand about each filling station and fume and fret at conservation.

'Tis said that folks with feelings frisky are buying gas like buying whiskey.

This liquid motive power, when hooped, made with thoughts afar on Shriners' day, has stored his car.

He never talks but only walks the street in sun and shower; the latter knows the situation. The former can't see conservation.

If we would give the raft of Shriners who'll come in autos, sleepers, diners, in aeroplanes and railroad trains, a trip across the country.

Then we must erode our thoughts of travel and forgo all desire for cavil, and save the gas to bring to pass. This instance of our bounty; we'll all profit like our nation. By practicing gas conservation.

WINTERS RETIRES AS COMPANY HEAD

Younger Winters and Brookings to Continue Business of A. J. Winters Co.

A. J. Winters company, for many years one of the leading automobile equipment dealers in Portland and a pioneer company in that line, announces the retirement of its president, A. J. Winters, and the formal transfer of the policy of the concern to the hands of L. D. Winters, a son, and Roy T. Brookings, sales manager of the firm for the last five years.

A. J. Winters has given the best years of his life to the building up of a wide-reaching business in the automobile equipment line, and is now on the point of beginning what he and his friends

consider a well-earned vacation. He expects to go to Alaska and spend some time in the wilds of that territory hunting big game. He will be accompanied on his trip by a younger son. Winters' activity in business has been due largely to his love of the out of doors and his participation in hunting and fishing activities during lulls in business. Just how long he will remain in Alaska is not known, but he has determined to absolutely retire from all connection with the equipment company which has borne his name.

The senior Winters had given the active administration of the company over to L. D. Winters and Roy Brookings some time ago, and his actual retirement will have no effect upon the activity of the business. Roy Brookings, who has been practically in charge of the sales policy, will continue to handle that department, while young Winters will take care of the buying and executive departments. The firm will be known as Winters & Brookings.

Brookings is well known in coast equipment and hardware circles, having established his reputation during his lengthy connection with the Honeyman Hardware company as a sales executive. His association with the Winters company has made him a man indispensable to each other, according to friends of the concern.

AGENT NAMED FOR STUTZ FIRE ENGINE

Fire Fighting Equipment Makes Excellent Showing in Indianapolis Tests.

The Campbell Fire Apparatus company of 249 Salmon street, has recently been made Pacific coast distributor for Stutz fire engines, manufactured by Harry C. Stutz at Indianapolis, Ind.

The local concern is headed by Ed Campbell and H. H. Bond. Campbell was assistant fire marshal of Portland for many years and later district fire marshal for the Emergency Fleet corporation of Oregon, and well known in fire department circles on the coast.

Tests made in Indianapolis with this fire fighting equipment show the system as worked out in the factory of H. C. Stutz, its perfecter, is superior to many other systems now in use in this country. It is said the streams of water thrown and sustained by the Stutz apparatus made a far better showing than that of other companies demonstrating machinery for use by the city of Indianapolis.

The Stutz fire machine has just been put on the market and the agency here expects to have demonstrators within a few weeks. Harry C. Stutz is president of the company building the H. C. Stutz Motor Car company.

Local Branch Has Been Playing Host To Factory Officials

The local branch of the Ford Motor company has lately been the host for several men from the main factory at Detroit, one of them being L. Donovan, traveling auditor, whose headquarters are chiefly wherever he hangs his hat, but who calls Detroit his business home. Donovan's visit here was simultaneous with the dropping in of C. W. Dunning, assistant sales manager of the Ford company, tractor department, and the company kept each other from being lonesome in strange surroundings. He will continue his travels in this part of the field before returning to the Detroit headquarters.

They're Going Fast! Come Get Your Share! AT THIS SLAUGHTER OF

Auto Accessories!

This Great Sale Will Continue Throughout the Week—Prices Cut

25% to 75%

Things are certainly moving fast down here at 111 North Broadway. Some lines are already sold out. Others will be. Better come early and do as other autoists are doing: Get the things you want at these tremendously cut prices. You won't see such a slaughter as this for many a long day and you know it.

25% Cut

on Ford replacement parts—Cuts as deep as 75% on Ford accessories.

TIRE HOLDERS

Rear or Side Holders now \$2.69
Ford Tire Holders, special... 1.69
Others as low as... 89¢

A FEW MORE

Cylinder Gaskets... 39¢
Spark Plug Wire Sets... 28¢
Brake Shoes, set... 49¢
Shock Absorbers... \$3.49
Ford Timers... 98¢
Valve Grinders... 58¢
Head Lamps... \$5.98
Side Lights, pair... \$1.59
Ford Starters... \$5.89
Commutator Wires... 58¢
Coil Protectors... 18¢
Robe Rails... 45¢
Clocks... \$2.98

Ford Switch Coil Locks

Tempcos with 2 keys... \$3.50
Syracuse Switch Locks 1.50... .69
Foot-Pedal Locks... .69

OILS—GREASES

1 lb. can Cup Grease... 19¢
1 gal. Light Oil now... 69¢
Others Cut Proportionately

Accessories For All Makes of Automobiles

Hodes Prices Are Always Low—But Look at These Doll the Car Up—These Prices Cannot Last

BUMPERS

Black Enameled 2 In. Channel Bumper	Reg. Price \$ 7.00	Sale Price \$3.98
Holiday Nickel Plated Channel for Bumper	10.00	6.88
Holiday Nickel Plated Channel for Saxon Cars	10.00	6.88
2 In. Nickel Plated or Black Cloverleaf Channel Bumper	10.00	6.98

SPARK PLUGS

Blue Streak with spark gap	Reg. Price \$1.50	Sale Price \$.69
Auburn Porcelain 1/2 and 3/8	.90	.59
Auburn Mica Porcelain Plugs 1/2 and 3/8	1.00	.69
High Grade Vulcan Spark Plugs	.69	.39
5 Point Spark Plugs 1/2 and 3/8	.69	.39

Other High Grade Plugs Slashed as Deeply

ELECTRIC SPOTLIGHTS

Sun Beam Spotlight	Reg. Price \$6.00	Sale Price \$3.98
Kaufman's Genuine Silver Beam Spotlight	7.50	4.98
Williams Model A Silver Beam Spotlight	7.50	5.98

AUTO MIRRORS

Rear View 5 In., black or nickel	Reg. Price \$2.00	Sale Price \$.98
Diminishing Mirror, black or nickel	1.50	.89
5 In. Fender Mirror, black or nickel	3.00	1.98
Round Bevel Plate 5 In. Mirror, black or nickel	2.50	1.79
5 by 7 Bevel Plate Mirror, black or nickel	3.50	2.69
5 by 7 Bevel Plate Oval Mirror, black or nickel	3.50	2.69
Inside Rear View Bevel Mirror, nickel	3.50	2.69
Truck Mirrors		1.89

A WARNING

Don't confuse our old location with our new one. We are no longer in our old corner. Now we are about a block down, near the postoffice. Be sure of the number—111 N. Broadway.

And Still We Flash a Few More

High-Grade Auto Jacks

Jacks, screw type, malleable cast.	Reg. Price \$ 2.00	Sale Price \$1.29
Jacks	2.50	1.79
2 Ton Truck Jack	5.00	3.98
Buckeye 10 Ton Truck Jack	20.00	14.95
Garage Jacks		6.75

Vulcanizing Outfits

Marve Junior, complete	Reg. Price \$1.00	Sale Price \$.59
Adams Vulcanizer	1.00	.59
Super Vulcanizer	1.50	1.19

AND THEN SOME MORE

No Glares	19c	Foot Pedals	15c
Sponges	19c	Cushions	\$1.29
Windshield Cleaners	39c	Boots	19c
Mats	79c	Inner Liners	\$1.89
Vases	59c	Hub Caps	12c
2 1/2 Vases	\$1.39	Trouble Lamps	98c
Valve Insides	28c	Grease Guns	49c
Grease Cups	6c	Combustion Wrenches	\$2.79
Rim Braces	59c	Theftproof Chains for	59c

INNER TUBES

We just bought some seconds. While they last—\$1.98

used to make a MAXFER This Handful of Tools and \$1.69

We are putting a special price on the Redden Perfected Attachment. Investigate now!

will make a speedy one ton truck out of your old car. It fits any make of passenger machine.

During This Big Sale Only

We are selling new \$350 Maxfer Auto Attachments for \$169. Buy now and get a good truck cheap.

Read All About My Big Auto Accessory Sale

DAVID HODES CO. 111 NORTH BROADWAY Near Glisan

DAVID HODES CO., 111 NORTH BROADWAY

Be Sure You Get in the Right Place—111 NORTH BROADWAY, NEAR GLISAN