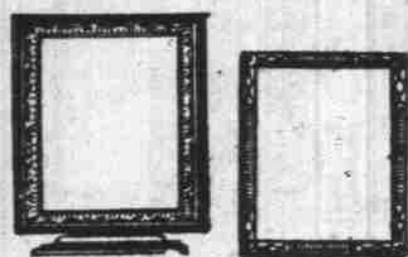


King Cotton and Super-Sales

Lipman Wolfe & Co.
Merchandise of Merit Only



REMARKABLE SALE

Picture Frames

Antique Gold Finish

48c, 68c

—Both stand and wall-frames in all sizes from postcard up to 8x10 inches in this sale.

—Every frame fitted complete with glass and back.

—Only five hundred frames in all—so come early.

—No phone orders or C. O. D.s.

—Seventh Floor, Lipman, Wolfe & Co.



Slip-Over

Guimpes and Vestees

Of Organdy—

In White, Rose and Delft

—The latest novelty for wear with Eton suits at the price of a mere necessity.

A Very Special Price

\$3.95

—All Pleatings of Organdy, Georgette and Net, reduced 1-3.

—Street Floor, Lipman, Wolfe & Co.

Remarkable Reduction Sale of Summer Household Needs

EXTREME savings at the moment when the items in question are in greatest demand.

—This is our idea of service.

—Little advantage would you gain were we to wait until September 1 to reduce Garden Tools, Rubber Hose, Lawn Mowers, Ice Cream Freezers, Screen Doors, etc.

—But these are the very items that are offered at extraordinary reductions, beginning tomorrow. Make a mental note of the things you require and be here early, for when the present assortment is sold out there will be no more at these prices.

Garden Tools
20% Off

—Our entire stock of "Farm King" Garden Tools.

Refrigerators
20% Off

—"Belding & Hall" and "Century" Refrigerators and Ice Boxes at this big reduction.

Garden Hose
20% Off

—Our entire stock of Goodyear Tire & Rubber Co.'s "Wing Foot" and "Elm" brands.

Freezers
20% Off

—"White Mountain" Ice Cream Freezers in one to ten-quart sizes.

Sprinklers
20% Off

—Also all nozzles and hose accessories.

Lawn Mowers
20% Off

—"Fenden" quality Lawn Mowers, plain and ball-bearing styles in 12 to 18-inch sizes.

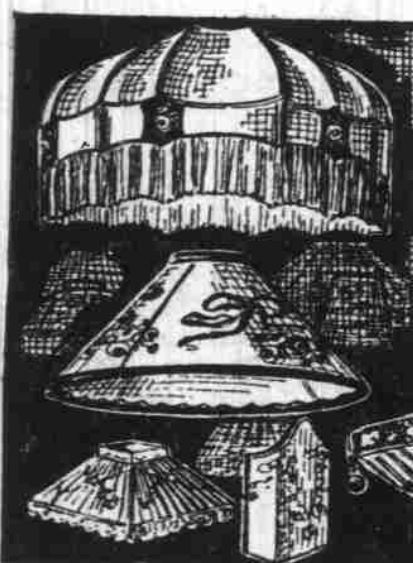
Screen Doors and Continental Window Screens 20% Off

—Both front and kitchen screen doors and windows in all sizes from twelve to twenty-four inches, and adjustable to thirty-three and forty-five inches. All at twenty per cent off. None of the above sent C. O. D. or on approval.

—Sixth Floor, Lipman, Wolfe & Co.

600 Silk Lamp Shades

Reduced From 20 to 50%



THIS is our semi-annual sale and involves the choicest and most complete stock of beautiful Silk Lamp Shades in the Northwest.

—Wonderful creations produced by combining hand painted parchment and georgette trimmed with moss braids are a feature of the assortment.

—Owing to the extreme reductions, all sales must be final—none will be sent C. O. D. or on approval.

—Sixth Floor, Lipman, Wolfe & Co.



\$7.95 Each or
2 Shirts for \$15

Tells the Remarkable Story of This

SILK SHIRT SALE

Crepes de Chine Empires Broadcloths
Habutais Pussy Willows

TELL OF THE "QUALITY FABRICS"

Patterns, Stripes, Color Combinations
as Designed and Woven by the

BEST MAKERS ONLY

Perfect Tailoring, Fit and Workmanship

goes without saying—as Shirts of merit only find space in our great Men's Furnishing Store—we have room for no others.

—This lot is limited to 700 Shirts—not nearly enough to go 'round.

—So come early—at opening time, if possible, and get the benefit of First Selection.

ALL SIZES, 14 TO 17
MANY SHIRTS
WORTH DOUBLE AND MORE
SEE WINDOW DISPLAY

—Just Inside Washington Street Entrance,
Lipman, Wolfe & Co.



Economy Basement Store

Everything for Cash

Everything for Less

No One But King Cotton Could Sell Corsets



So Good for \$1.35

—Two models of coutil with very low bust, one with elastic at waistline. Medium long over the hip and back, neatly finished at top with embroidery and drawstring.

Pink Brocade Corsets \$1.69

—A popular Summer model, topless, with elastic at waistline and very little boning. Medium long skirt with two pairs of supporters. Extraordinary at \$1.69!

—ECONOMY BASEMENT, Lipman, Wolfe & Co.

Polo Coats \$14.50



—These Coats were bought very special and in addition we have pared our profits close and marked them for your benefit.

\$14.50

—This is the best sale of Coats that we have held at anywhere near this price.

—ECONOMY BASEMENT, Lipman, Wolfe & Co.

Voile Dresses \$14.50



—Beautiful flowered voile materials and styles with French daintiness and charm make this special purchase and sale truly wonderful at

\$14.50

—A number of styles, effectively trimmed—the voiles are on rich, dark backgrounds.

—ECONOMY BASEMENT, Lipman, Wolfe & Co.

King Cotton Says—

\$2.95

You Will Wonder How He Could Make the Price So LOW



Trimmed Hats

—The newness, the smartness, the quality, are the outstanding features of these trimmed hats, with price the most wonderful thing of all. Of fine quality bleached peanut and natural Tuscan straws, trimmed with bands in novelty embroidered effects or with floral wreaths. Large hats with straight or gracefully drooping brims. You'll like them!

—ECONOMY BASEMENT, Lipman, Wolfe & Co.

The Mammoth King Cotton Sale of White Brings Back the Good Old Days of a Great Big Dollar's Worth

Petticoats, Gowns, Envelopes \$1.98

—Garments of soft finished longcloth, the petticoats finished with deep embroidery ruffle, the gowns in slip-on style with yoke effects, embroidery and ribbon beading; envelopes with deep Empire yokes at back and front, finished with Val. lace edging and insertion and embroidery banding, ribbon drawn.

Envelope Chemise 98c

—Dainty flesh batiste and soft white longcloth fashion many charming styles in these envelopes, exquisitely trimmed with narrow embroidery, Val. lace and insertion or combinations of lace and embroidery bandings. Sizes 36 to 44.

Drawers 98c

—White longcloth drawers, tape-drawn at waist and daintily trimmed with lace or embroidery. Sizes 25 to 29.

—ECONOMY BASEMENT, Lipman, Wolfe & Co.

Gowns \$1.49

—Slip-on gowns of soft white longcloth, lace and embroidery trimming, some with touches of color, all ribbon-drawn.

Bloomers 98c

—Windsor crepe bloomers in flesh, elastic-drawn at waist and knee, finished with narrow ruffle.

Camisoles of silk 98c

—Slip-on and open-front styles, with ribbon straps or built-up shoulders, some with white or cream lace, altogether lovely and unusual at 98c.

Gowns, Petticoats, Bloomers \$1.29

—The gowns and petticoats in this remarkable collection are of soft white longcloth, the bloomers of flesh tinted Windsor crepe. Gowns are trimmed with lace embroidery and ribbon drawn; petticoats finished with embroidery ruffle and some with dust ruffle; bloomers reinforced and elastic drawn.

Comparative Prices are misleading and often untrue