

MOTORCYCLE CLUB ENDURANCE RUN IS GRANTED SANCTION

Thousand Mile Race to Be Over Same Course as That of Last Year; Date Set for July 30.

The Rose City Motorcycle club has been awarded the sanction of the M. & A. T. A. for the North Pacific sectional endurance run which will be run on the same course as was used last year for the 1000 mile run. This run will be held July 30, 31, August 1 and 2.

Starting at The Journal building at 7:01 a. m. July 30, each rider will leave at minute intervals. The first checking station will be Hood River, the next Rock Creek Ferry. In accordance with the rules, each rider must spend one-half hour for lunch.

The third checking station will be Heppner, in the center of the Oregon desert; next comes Pendleton, where each rider must check in on time, the first rider being due at 6:20 p. m.

This is the first night control where the riders stay over night and check out the next morning at 7:30 a. m. for Walla Walla. From here on they travel through some of the worst roads in the country to Pomeroy, Wash., which is the noon control of the second day, and each rider spends one-half hour again for lunch.

From Pomeroy they travel on to Spokane, the end of the second day's run, where the riders were so warmly welcomed last year.

It is the supposition of the veterans of last year's run that 20 per cent of the starters will never reach this point on time. After spending all night in this city, they take up the run again on the following morning for Davenport. Between these two points they travel over a wonderful stretch of paved highway and then into Odessa.

The scenery in this territory greatly resembles the Colorado canyon and the wonderful Columbia river winds its state way along the highway until we reach Vantage Ferry. From Vantage Ferry the riders proceed on to Ellensburg and from there over some more well paved roads into Seattle. Here the riders will be refreshed with a good night's sleep including real beds and a good substantial meal or two. This last day's run is the longest run of the contest.

The following morning once more at 7:01 a. m. they will start out on the last day's run for Chehalis, the place for the noon control. Thence they will wind back into Portland, being due at 2:50 p. m. at The Journal building.

THESE WERE ACTUALLY MEN IN THE MOON



A peppy gang of engravers pause for a moment. They are, from left to right—Wallace Smith, Chicago American; F. E. Andrews, of Portland; E. W. Houser, Chicago Association of Commerce; Carl Freilinger, E. S. Schmeer and L. F. Otto, all of Portland. The car is a Moon Six, sent out by the local distributors.

Roberts Appointed General Sales Head Of Stewart Firm

Edward R. Roberts, for several years with the Bush Manufacturing company of Hartford and previous to that with the Locomobile company, has been made general sales manager of the Stewart Motor corporation of Buffalo, N. Y.

Charles C. Craig, former general sales manager, has been promoted. He now holds the title of assistant to the president and will look after the outside interests of the management.

Announcement is also made that production has increased 250 per cent for the first three months of this year over the corresponding period of last year.

The Stewart plant was kept in operation during the railroad strike by the use of Stewart trucks. On Wednesday, April 14, the factory ran close to the danger line on various stocks of materials. The engineering department worked out detailed plans for a transport line between the various points of supply and Buffalo. So by the above it can readily be seen that the motor truck can favorably meet any transportation emergency even to keeping up and increasing production in motor truck plants.

Eisemann Service To Make Specialty Of Famous Magneto

With the appointment of the Pacific Eisemann Service corporation as representatives for the Eisemann products, the handling of this popular magneto will be the main feature of the company.

New quarters have been provided at 434 Alder street, in part of the building occupied by the Gilson Storage Battery company. A large stock of repair parts has arrived, as well as complete magnetos, and the shop has been fitted out with special magneto test and repair equipment.

Among the new products of the Eisemann company is the magneto generator designed for truck service. The generator has a standard magneto base and can be installed where any standard magneto has been used. It then becomes not only the main feature of a lighting system, but a magneto as well.

L. J. Hanney is president of the company; George K. Taylor, a pioneer ignition man, is vice president, and F. H. Hildebrand is manager. The shop work will be in charge of magneto specialists and magneto work will be handled exclusively.

REPUBLIC TRUCKS

Our facilities for rendering after-sale service to Republic users are complete to the last detail.

The Republic service policy, conceived at the factory and transmitted through us, is positive protection to Republic owners.

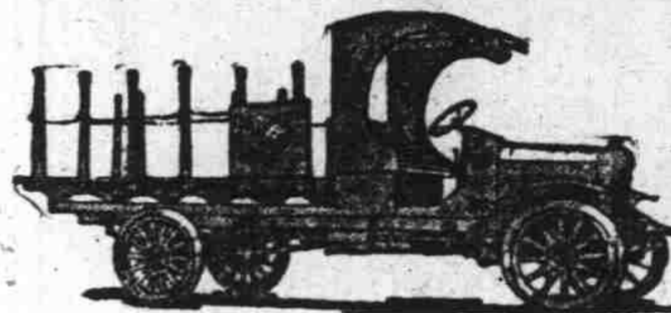
ROBERTS MOTOR CAR CO.

Vancouver, Wash. Portland, Ore. Boise, Idaho

Stewart

MOTOR TRUCKS

Chassis Prices:
 1/4-Ton \$1350
 1-Ton \$1750
 1 1/2-Ton \$2250
 2-Ton \$2875
 3 1/2-Ton \$3895
 f. o. b. Buffalo



Announcing That We Have Secured the Distribution of STEWART TRUCKS for Oregon

Stewart Trucks cost less to run

Many owners tell us that their "Stewarts" cost about 20% less to run than other trucks they have used. This gratifying result is due to Stewart simplified design which eliminates hundreds of needless parts, giving you a simpler and stronger truck.

The tire mileage of the Stewart is really wonderful—gasoline and oil consumption is low. The repair shop is almost a stranger to the Stewart.

And these high-grade Stewarts cost

\$200.00 to \$300.00 less than the average price of other trucks.

Buy a Stewart and join the big family of thousands of satisfied Stewart users.

Stewart Trucks have won by costing less to run

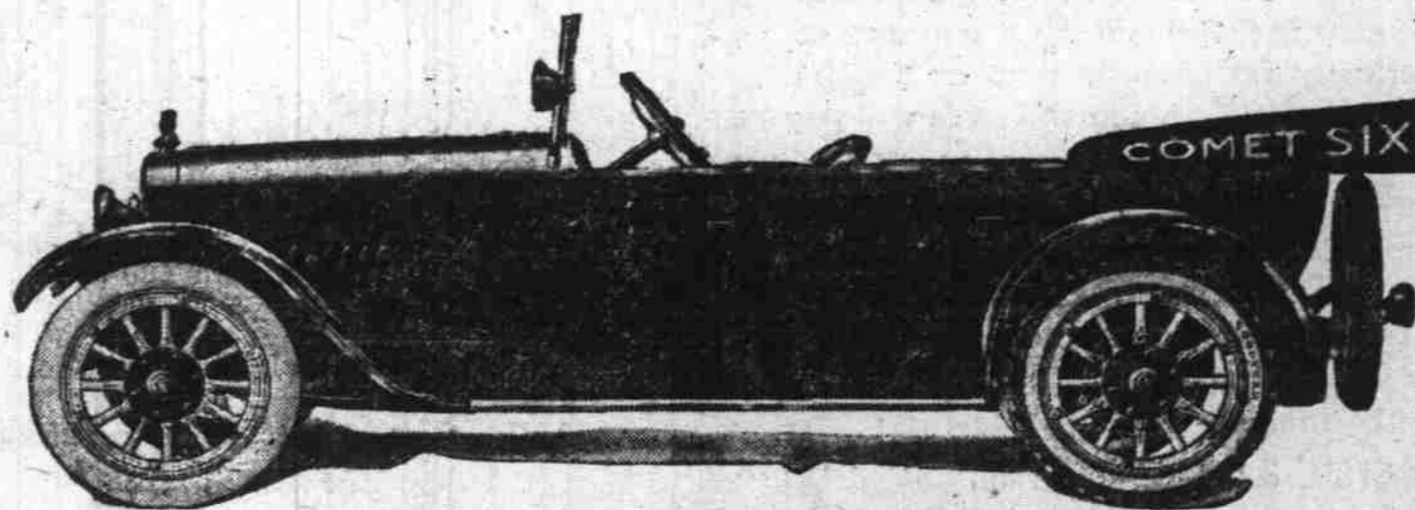
LAFFAW MOTOR CAR CO.

Stewart Distributors

343 OAK STREET TELEPHONE BROADWAY 354
 Dealers—Some Territory Still Open for Live Dealers

HAVE YOU SEEN THE COMET?

—IT'S A QUALITY CAR—



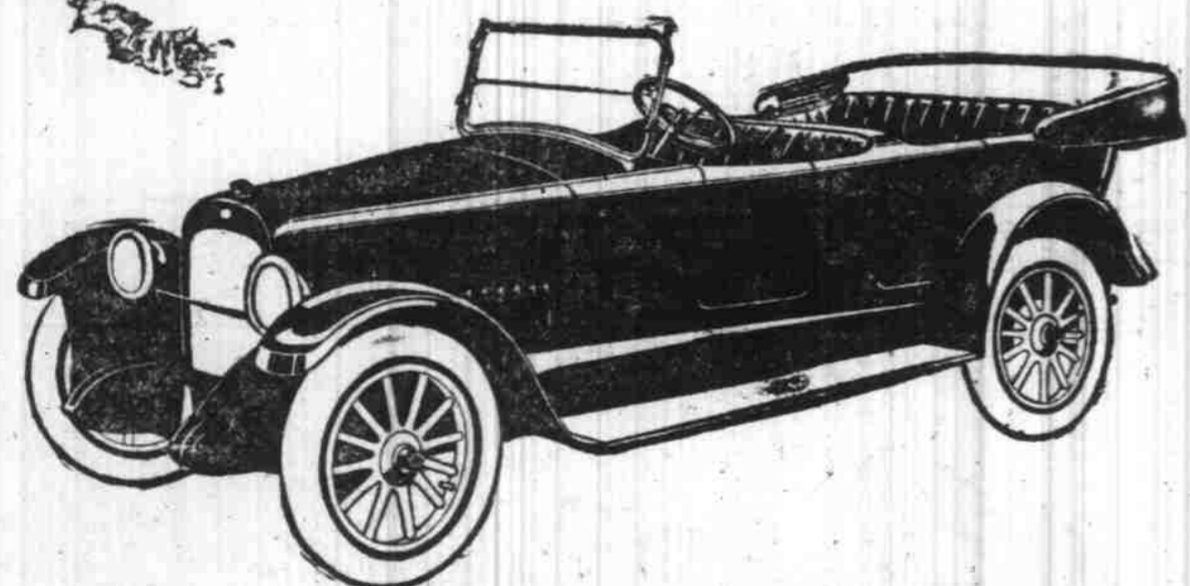
WONDERFUL POWER

Climbs hills with the utmost ease. Sturdy construction, yet refined lines and artistic in appearance. A car for any purpose and always satisfying to the driver. Continental 9-N Red Seal Motor and all of the latest mechanical features.

Dealers seeking better-built cars—that they can deliver NOW—will find it profitable to investigate the COMET.

ATTERBURY TRUCK SALES CO.

Distributors for Oregon, Southern Washington and Western Idaho
 343 OAK ST., NEAR BROADWAY—PHONE BROADWAY 354



Nash Six Leadership Is Established by Performance



Perfect Valve-in-Head Motor

Five-Passenger Touring Car,
 Two-Passenger Roadster,
 Four-Passenger Sport Model,
 Seven-Passenger Touring Car,
 Four-Passenger Coupe,
 Seven-Passenger Sedan
 Prices & c. b. Kenosha

The marked preference for Nash Six in all parts of the country is clearly the result of its fine performance record in the hands of owners. Every Nash model, open and closed, has the Nash Perfected Valve-in-Head motor, powerful, economical and quiet.

Portland Motor Car Co.
 Tenth at Burnside St.

NASH MOTORS

VALUE CAR AT VOLUME PRICES

APPERSON



TOWN

The Apperson as a town car is preferred by the discriminating. Unusual beauty of design is combined with an unusual adaptability. Some concrete instances follow:

The Apperson will reach a speed of 40 miles an hour in high from a speed of 1 mile an hour in 20 seconds! And without jolt or jar. A flexibility most useful in town driving.

The Apperson will make a 38 1/2-foot turn on a 130-inch wheel base. We believe that no car but the Apperson can perform this feat. Another notable advantage in city driving.

The Apperson body is of graceful individuality yet every line and shade is dictated by good taste. The creation of a famous New York designer. No car on the boulevards more distinctive than

APPERSON

The EIGHT WITH EIGHTY LESS PARTS

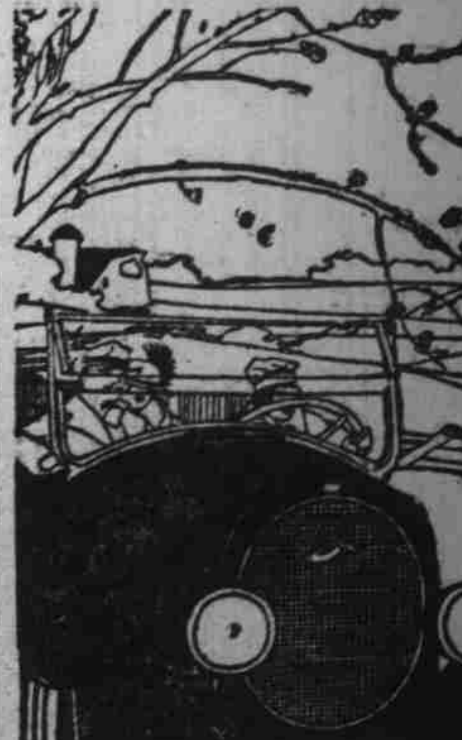
The Apperson develops full horse power—always under perfect control. Quick response to the severest demands of fast country driving.

The Apperson is worthy of your closest inspection—we extend a most cordial invitation.

APPERSON MOTOR CAR CO.

60 BROADWAY
 Phone Broadway 1490

COUNTRY



APPERSON