

## JOURNAL'S POLICY IN TRAFFIC TOLD MOTOR DEALERS

B. F. Irvine, editor of The Journal, outlined The Journal's policy in regard to the traffic campaign now being conducted in an address to the members of the Dealers' Motor Car association of Oregon, Monday night at its regular meeting at the Berman hotel. Irvine described the situation as it existed last winter, called attention to the increase in the number of accidents, pointed out how the condition may be bettered and asked the dealers for their cooperation in educating the motoring public to operate cars with greater care.

His address was received with enthusiasm by the men of the automobile business here, and the president, M. O. Wilkins, assured Irvine that the committee of the association would give all the aid possible. Individual members present also signified their intention of doing their part in showing their customers what their duties are toward fellow motorists and pedestrians.

Chief of Police Jenkins made a talk on the new auto theft bureau, organized early this month, gave the dealers an outline of what the police are doing and showed where the men under Lieutenant Thatcher had already been instrumental in recovering a high percentage of cars stolen in municipal limits. He appealed to the dealers for their aid in making the work of the bureau effective and offered the services of the organization whenever needed.

Mayor Baker talked in behalf of the coming Shrine convention, calling attention to the opportunity Portland would have to impress the visitors with the magnitude of the city's industrial activities and inviting the dealers to assist in any way they thought best. W. J. Hofmann, chairman of the Shrine entertainment committee, supplemented the mayor's talk with a similar appeal.

## Warren Bros. File Patent Injunction Suit Against Huber

The Warren Brothers company Monday filed in the United States district court a suit to enjoin Oscar Huber, paving contractor, from further alleged infringement on a patent said by the company to be controlled by it. The Warren company alleges that the specific violation is the Green Springs mountain road, in Jackson county, leading to the California state line.

Huber was awarded the contract by the state highway commission last May. The Warren company demands damages also for injury alleged to have been done by Huber's laying the patented pavement, and also what profits over the cost that have accrued to Huber. "The state highway commission guaranteed contractors protection for infringement of paving patents," Huber today declared. "This suit has little to do with me, except that it is an indirect slap at the commission."

## Elliot, Appointed O. A. C. Instructor, Resigns at Milton

Milton, April 13.—Professor E. E. Elliot, director and instructor of the Smith-Hughes industrial and agricultural department of the Milton-Freewater high and public school, has resigned to accept a position in the state Smith-Hughes work, under direction of the extension department of the Oregon Agricultural college.

A teachers' institute for the east end of Umatilla county has been called by W. W. Green, county superintendent of schools, for Friday.

**Telephone System Sold**  
Baker, April 12.—E. E. Marker and E. C. Endruff are reported to have purchased the J. L. Blaher telephone system which serves Pine Valley, Cornucopia, Richland, Robinett, Balliads Landing, Curron (Idaho), Pine and Carson. The consideration was reported as \$12,000. This line and one already owned by the purchasers have been merged and are now known as the Pine Telephone system. Marker is a Baker county commissioner.

## YOUTH CONFESSES HE HELD UP GAME

Astoria, April 13.—Oliver Milton Weekly, an 18-year-old boy, held up and robbed loggers in the bunkhouse at the Holland, Briggs & Avery logging camp on Grays river, Washington, at 8:30 o'clock Sunday night. He then boarded a boat for Astoria and was arrested when he arrived here.

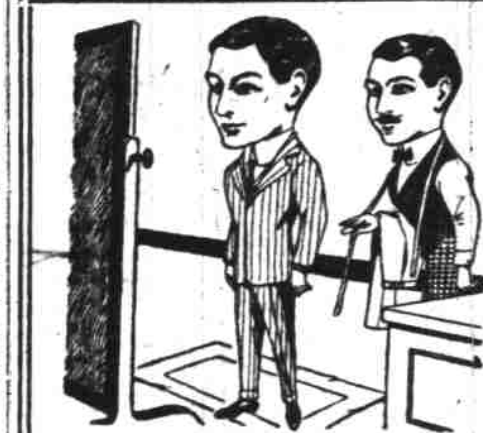
**LOADED REVOLVER FOUND**  
Officers, on searching the young bandit, found a fully loaded .46 caliber Colt's army automatic revolver, \$195 in cash and one of the logging firm's time

checks for \$39.16, drawn in favor of J. Yeager. The prisoner, who at first refused to tell his real name, confessed his guilt, claiming, however, that \$15 of the money taken from him by the authorities, was his own. Weekly confessed that he had gone to the camp to secure work, but could not get a job. During Sunday evening the loggers were playing poker. After watching the game for a few minutes, he stepped outside, tied his handkerchief about his mouth and nose and then re-entered the bunkhouse and held the men up.

**CAMPS OUT AT NIGHT**  
After leaving the bunkhouse he walked down the trail toward the river, lighted a fire beside the trail and remained there until morning, when he hailed the steamer Butte and came to Astoria. "Those men were breaking the law by gambling," remarked Weekly, "and it would take a chance and break the law too."

## Mexicans Held for Hotel Room Thefts

About the same time John Kane, Chicago hotel, missed his railroad ticket, traveler's checks, currency and other belongings, police found his possessions under the carpet in a nearby room occupied by three Mexicans. Monday Municipal Judge Rossmann tucked M. Lopez and Alfred Morales away for 45 days each in jail, while Cesto Silva was fined \$25. They told the court they knew nothing about the theft, nor could they explain possession of an overcoat claimed by R. McPherson, negro.



## A View of Yourself

in the mirror after we have finished a suit for you will give you the pleasant consciousness of being perfectly dressed. We are tailors who take pride in our work. We put our utmost skill into every garment we make.

The result is always the customer's satisfaction.

The splendid materials we have on hand at this time at prices so reasonable, are putting ready-made clothing into the shade.

It Pays You to Have Your Clothes Made to Order by Us

## Werner Petterson Co. Tailors

313 1/2 Washington St.—Upstairs at 6th

## Make Them All "Banner" Bake Days!

Every one can—you can, if you'll only use

## GALUMET BAKING POWDER

—its wonderful leavening strength and absolute purity insure this. That's why cooking experts, domestic science teachers, big hotels, railroads and millions of America's best housewives always use it.

Galumet contains only such ingredients as have been approved officially by the U. S. Food Authorities.

You save when you buy it You save when you use it

HIGHEST Quality Awards



## SIMON'S THE STORE BARGAINS

First, Second and Alder Streets

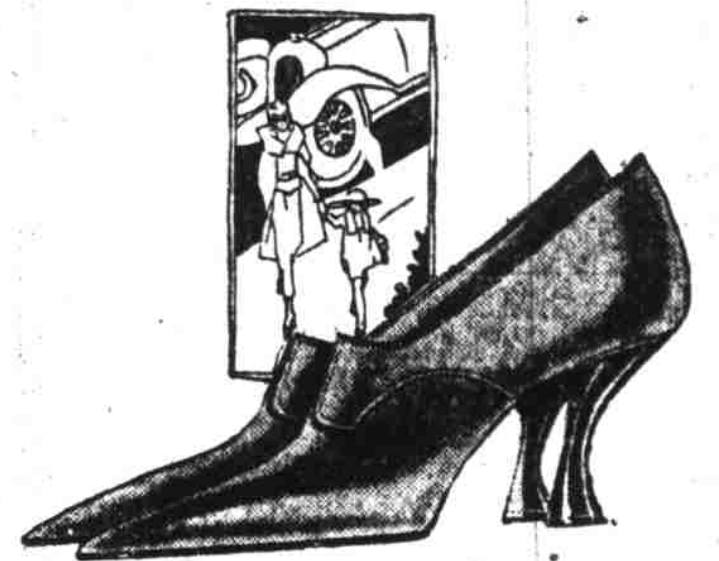
Our New Telephone No. MARSHALL 4831 Greatly Enlarged Service Connecting All Depts.

## Important Wednesday Offerings for Economical Men and Women!



Men's Worsteds Suits \$23.50

Men, here are real \$30 values for less! Conservatively styled worsteds in neat patterns are offered at only \$23.50! It's an opportunity to buy a good, sensible suit at a moderate outlay. We have all sizes, too, from 36 to 42. Come in and let one of our young men slip one onto you—you'll see the value!



Women's Pumps With Buckles Attached

\$5.75

We show these in soft black kid and in patent kid, with hand-turn soles, French heels and long vamps. Buckles attached. All sizes in stock.

We also show patent colt pumps with either French or military heels. All sizes.

All are of extra good quality, and they are offered at a very special price:

\$5.75

# For a Greater Oregon

## A 30-FOOT CHANNEL TO THE SEA Portland's Waterway to Ocean Commerce

THE PORTS OF PORTLAND AND ASTORIA NOW POSSESS THE DEEPEST HARBOR ENTRANCE ON THE PACIFIC COAST. American engineering has completely overcome the unsatisfactory channel conditions formerly existing at the entrance to these harbors. The Columbia river bar—so widely advertised by rival ports—has been overcome by the construction of two great rock jetties.

THESE GREAT WALLS, respectively seven and one-half and two and one-half miles in length, constructed by the federal government at a cost exceeding \$16,000,000, confine the discharge of the Columbia river and thus create a harbor entrance of forty-two feet mean water depth. Natural scouring of the river bottom, increased by the jetty construction, is constantly producing a greater depth, with the result that a fifty-foot low water entrance may be expected within five or six years.

THE APPROACH AND VICINITY OF THE ENTRANCE CHANNEL are shown by a detailed coast survey chart to be free from sunken rocks or other hidden obstructions. Their absence, connected with the uniform slope of the ocean bed, creates a very accessible entrance, permitting vessels to stand close in when seeking to enter the river. Less fog exists at the mouth of the Columbia river than at any other port entrance on the Pacific coast. Fog statistics for the past 10 years show an average yearly fog of but 696 hours at the entrance to the Columbia river, whereas San Francisco averages 1581 hours and Puget sound 1206 hours.

FROM PORTLAND TO THE SEA there exists a channel with minimum depth of thirty feet mean lower low water. This channel represents the fruits of permanent dike construction and dredging completed some years ago. The dredged portions of the channel have a minimum width of 300 feet, and up to 600 feet where cuts are located in the bend of the river and where other conditions require a wider channel. Great stretches of deeper water between cuts afford frequent and adequate anchorage places where vessels may swing with the tide, without interference to navigation.

THE FOLLOWING TABLE shows channel conditions of the Oregon ports equal to the great inland ports of the United States:

Port	Location	Channel Dimensions—			
		MIN. Depth from Open Sea	Width	L. W.	H. W.
New Orleans	Mississippi River	106	300	30	21 1/2
Philadelphia	Delaware River	105	500	30	36
Galveston	Galveston Bay	6	600	30	21 1/2
ASTORIA	Columbia River	14	300	31	28 1/2
PORTLAND	Columbia River	112	300	30	22

THE ABOVE CHANNEL DESCRIPTION AND FAVORABLE COMPARISON of Oregon ports with the great inland ports of America proves great shipments can be attracted, and one of the greatest offshore trades in the United States developed.

## THE NORTHWESTERN NATIONAL BANK PORTLAND, OREGON.

Advertisement No. 11 of Series "For a Greater Oregon"



# For Breakfast! For Lunch! Improved Corn Flakes POST TOASTIES

Super-excellent in flavor, texture and satisfaction  
A pleasure to the palate, a delight to the digestion.



America's Most Popular Corn Flakes

In ordering specify Post Toasties by name.

Made by Postum Cereal Co., Inc., Battle Creek, Mich.