

SNOW STORM DOES NOT MAR OUTINGS ON CAMP GROUNDS

Many Summer Home Sites in Camping Grounds Already Rented Assure Successful Season.

Portlanders all know about Eagle creek and the vast crowds that visit it on bright summer Sundays. But do they know that even last Sunday in the midst of a hail and a snow storm, six camping parties were enjoying the benefits of the Eagle creek campgrounds?

IDEAL CAMP SITES

And do they know that there are about 15 other camping grounds of varying degrees of improvement for their use in the Oregon national forest? These do not take into consideration, of course, the thousands of beautiful spots where anyone may camp, but only those where the forest service has done something for the comfort of the camper in the way of shelter houses, fireplaces, water pipes, tables or other facilities.

And do they know that Oregon is only one of 16 national forests in the state, all of which afford recreational facilities of some sort, although some are more suited for public camping grounds than others.

The forest service is undertaking a statistical classification of Oregon's national forest campgrounds together with their facilities, dividing them into four classes. Class A contains those able to accommodate 5000 persons at one time, with fireplaces, parking places, running water, toilets, garbage cans, side trails and other improvements. Class B are those accommodating from 500 to 5000 persons; class C those between 50 and 500 and class D those in which there is room for less than 50 persons.

MANY ACCOMMODATIONS

There are pages and pages of camping ground lists, vast sized pages, together with maps of the different forests with the camps marked in colored pencil according to their degree, being done under the direction of Assistant District Forester C. J. Buck, in charge of forest service recreation work.

The Eagle creek campgrounds, with further improvements, could easily accommodate 6000 persons, it is estimated, although their present capacity is but 3000.

Still creek, near Zigzag, will soon develop into a class A campground with the building of the Mount Hood loop road. Already a large number of applications for summer homestead leases being received, and forest service officials predict that with the completion of the new road, it will rival the Eagle creek in popularity. Other campgrounds on the Oregon route are those at Clackamas lake, Clear lake, Bear Springs, Wahtum lake, Lost Lake, Elk meadows, Tully Jane, Warrendale camp, Ruckle creek, Roaring river and Moore creek. Open camps may be had at Hagaby, Government camp, Summit house meadows and Baker lake.

BRENDEN SCATTERED

On the Santiam national forest are 14 public campgrounds, accommodating 2000 persons, of varying degrees of improvement.

Twenty-four campgrounds on the Siskiyou forest are visited by 2700 persons a year. Nineteen of these are on government land and others on private areas within the forests. Of these, the Oregon caves is the greatest attraction, ranking with class B.

LEAVE SUMMER HOMES

The Crater national forest, surrounding Crater national park, is one of the most popular forests, with its 27 campgrounds. Union creek grounds alone were visited by 17,800 persons last year. It lies on the road to Crater lake, not far from the natural bridge and the Rogue river gorge, in a grove of open pines. Lake of the Woods will be a class A campground this summer. It is a favorite spot for residents of Ashland and Klamath Falls who are taking up leases for summer homes. Huckleberry City is a popular place in huckleberry season.

On the Deschutes national forest 32-645 persons camped last summer on a series of campgrounds strung from the southern boundary of the Indian reservation to the Klamath reservation, including Paulina mountain region, Odell lake with its 3000 capacity, Lake Crescent with accommodations for 2000 and Paulina lake with 1200 are among the best known. The Metolius river with its numerous spots of scenic beauty is also popular.

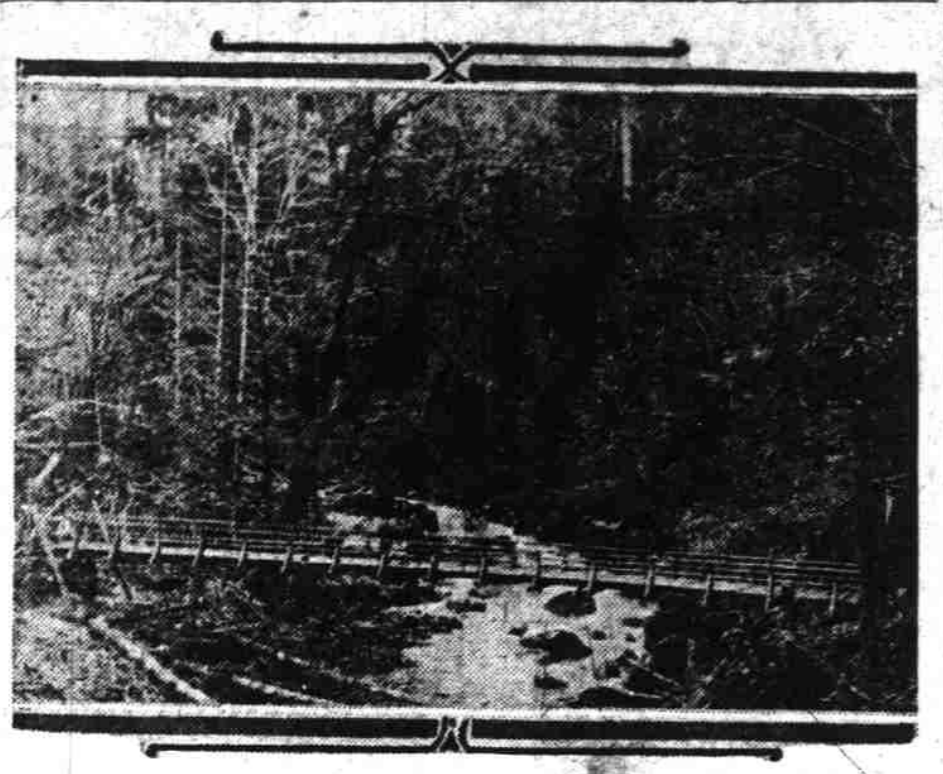
On the Cascade national forest 4500 persons camp annually. The Mackenzie river, near Mackenzie bridge, which will be a class B campground this summer; Salmon creek, where the new hatchery is to be located; Flat creek and Star creek are among the most prominent camping out places.

Other forests in the state have campgrounds more or less developed and all of them ideal spots where the motorist, the fisherman, hunter or hiker may find relaxation and rest.

Find Baby on R. R. Tracks

GALUS, Mo., March 20.—(I. N. S.)—A week old infant, unharmed except for minor scratches, was found on the tracks of the Missouri Pacific railroad between here and Reed Springs a few days ago. The baby was found by track inspectors, who took it to a nearby farmhouse to be cared for. It is believed the child was thrown from a train, as there were scratches on its face and one arm, indicating a fall.

PEOPLE SOLVE PROBLEM QUICKLY



Settlers and forest rangers collaborate on span across Coquille river

Y. W. C. A. DRIVE AIMS TO OBTAIN \$40,000 IN APRIL

Teams are Organized and Ready to Launch Campaign; Good Work Done by Organization.

The \$40,000 budget campaign for funds with which to carry on the work of the Young Women's Christian Association for the ensuing year will be launched the first week in April, under the direction of Mrs. F. W. Stephenson, of the national board in New York, who is now here. Teams are organized and committees in working trim for the opening of the drive.

For more than 50 years the Y. W. C. A. has made a study of the girl problem, inside and outside of working hours. It strives toward a firm comradeship based on the democracy of a common good and in its associating young women and girls in Christian fellowship tries to promote growth in Christian character and service.

WORK IS EXTENSIVE

Twelve different departments are maintained by the Portland association, girls' work, swimming, physical training and gymnasium, employment, commercial school, religious work, industrial, cafeteria and dining room, art and crafts, travelers' aid, rooming and membership.

Wednesday afternoon over to free swims, including bathing suits and towels. Employed women and girls take advantage of this opportunity during the evening, while grade and high school girls are afternoon guests. It is not necessary to be a member to enjoy this free swim.

EMPLOYED GIRLS ARE AIDED

The girls of high school age from 14 to 18 years make up the membership of the Y. W. C. A. in Portland. The industrial department provides healthful, wholesome entertainment and recreation for the employed girl. The arts and crafts department affords opportunity to girls wishing to improve in designing, painting, weaving, pottery and basket making.

The travelers' aid department dreads and helps the strange girl in the city to safe and proper quarters until she has her bearings. Last year it served more than 8000 sick or elderly men and women, girls and children.

4000 GET WORK

Through the employment department of the Y. W. C. A. nearly 4000 women secured work last year. The rooming department cared for more than 7000 girls, 300 of whom were without funds, last year. Rooms may be had as cheap as 25 cents a night and no girl is ever turned away for lack of money, say Y. W. C. A. directors.

Other departments are the religious, the cafeteria and dining room, the commercial school. Any girl wishing instruction in dressmaking or millinery may have it free, providing she furnish the materials. Free classes are offered in dramatics.

Celebrates 20th Birthday

Somerville, Mass., March 20.—(I. N. S.)—Benjamin Gordon Baldwin, veteran of the Civil war, has just observed his twentieth birthday. Although he is 89 years of age, Baldwin has a birthday \$2.50 to \$100. Those giving were: W. E. Matthews, Ed Liddell, S. W. Hol-

DRY CLEANER SPECIAL

This week is Multum Cleaners & Dry Works Coupon week. Each organization should appoint a committee to see that these \$1 books are sold in quantities. These votes make it well worth while working this week.

OLYMPIC FLOUR WEEK

We are very content to test the wonderful merits of Olympic Flour and to make it worth while for them to do so we will give this week 1,000,000 votes for each 98 pounds of sacks turned in. Buy a supply and get the big votes and learn that Olympic Flour is the world's finest.

REGISTRATION WEEK

All this week will be Registration Week—50,000 votes for each name registered at headquarter. No set all members and every friend and neighbor to call and register for your organization.

FREE COOK BOOK

We will give a handsome 100 cent Recipe Book free to every lady—ask for one.

BIG COMBINATIONS

Combinations must embrace all of the several items mentioned, and brought in at one time all 20,000,000 extra votes, in addition to the 10 votes each cent extra vote.

COMBINATION "D"

1—The Golden West Canned Fruit, 2—King's dehydrated products (cans), 3—Hazelwood Butter, 4—Royal White soap wrappers, 5—L. E. Rogers Handy box tops, 6—Shotwell Shoe Polish cartons, 7—Deluxe Tea Labels, 8—Rose Queen Liquid Shampoo, 9—S. O. S. Aluminum cleaner bottles, 10—Any contest Coupon Book.

SUSPENSION SPAN CREDIT TO PUBLIC SPIRITED CITIZENS

Coquille River Bridge Made Possible by Donations; Structure Gives Direct Trail in District.

Spanning the Coquille river on the new forest trail between Illaha and Powers is a new 100-foot suspension bridge, a monument to the public spirited citizens of Powers who donated a total of \$996 in money and labor for its construction.

Forest service officials saw the need for a shorter and more direct trail in the Rogue river country last summer and Forest Ranger R. L. Helm of Agness, realizing the benefit it would be to the people of Powers, canvassed the town, telling the business men that the forest service was ready to begin construction and assure the completion of the project, provided they came through with the construction of the bridge. The response was immediate and sufficient money was raised to commence work in October.

The bridge is constructed of Port Orford cedar with main cables of 1 1/2 inches. The trail on which the bridge is located connects up the Rogue river with the railroad by 26 miles or a one-day journey. Heretofore it has taken two days over a bad trail leading over a steep mountain. The new trail has the additional advantage of being usable at any time of the year.

The people of Powers raised \$441.50 for the bridge, donations running from \$2.50 to \$100. Those giving were: W. E. Matthews, Ed Liddell, S. W. Hol-

comb, E. G. Allen, C. A. Gage, Sam Gordon, Hub Mercantile company, F. G. Strawther, A. W. Burton, W. K. Wiseman, F. W. Reynolds, George Stewart and son, J. D. Culver, J. T. Ross, Gus Satriako, W. A. Darling, M. R. Lee, E. J. Loney, J. P. Hayes, W. W. Williams, L. C. Cochran, J. E. Taylor, C. C. Taylor, Thomas Hayes, H. N. Lorenz, Ernest Bur.

Cooks and Waiters On Strike in Boise

Boise, Idaho, March 20.—Seven of the largest restaurants in this city were forced to close their doors this morning when 150 members of the Cooks' and Waiters' union walked out. The entire membership of the local union, 210 members, will be out tomorrow morning. The waiters ask an increase of 50 cents a day and the cooks \$1. The walkout was the result of action taken last night when restaurant owners refused to meet demands of the union. Cooks and waiters left their posts at 10 o'clock this morning. Proprietors, meeting this afternoon, declared the demands unreasonable and refused to meet them.

Indiana Delegation To Go Uninstructed

Indianapolis, Ind., March 20.—(U. P.)—William E. Elder, acting for Vice President Thomas R. Marshall, today withdrew the petition asking that Marshall's name be placed on the presidential preference ballot in the Democratic primary in Indiana. The Indiana Democratic delegation will go uninstructed as a result.

CARRIER PIGEONS RAISED FOR USE IN FOREST SERVICE

Supervisor McDuff Goes to Much Trouble to Prepare for Next Summer When Fires Break Out

Being godfather, physician, and school teacher to a steadily increasing family of carrier pigeons is a good sized job, asserts Supervisor N. L. McDuff of the Cascade National forest, who is at the forest service office from Eugene.

McDuff started pigeoning a year ago with 12 birds; he now has 40, with an expectation of 60 ready for use at the beginning of the forest fire season. Most of the birds will be used by the airplane observers to carry word of the whereabouts of fires or of themselves back to headquarters.

ONLY ONE NOURISHMENT

McDuff has obtained almost a technical knowledge of carrier pigeons since he commenced in an amateurish way experimenting with birds for the forest service. For instance, he talks about "squeakers." A "squeaker" in bird language is the same as a "lawyer" would be in human language, if such a term were used. "Squeakers" are the young birds who have not yet learned to use good pigeon English. McDuff is finding himself beset with grave social problems. Parents are deserting their squeakers. Thus the mortality rate of squeakers is high, since no artificial baby food has been devised for orphaned squeakers. Squeakers can thrive on no other nourish-

ment except that from their parents' stomachs.

DESTROYS NEW NESTS

So eager are the parent birds to raise a new family that they are continually trying to commence nesting again before the young are past their care. Then McDuff ruthlessly destroys their new nests as fast as they build them. One obdurate bird defied him and laid an egg in the same nest with her young. McDuff removed the egg. Other birds stoutly refuse to nest.

BIRD SAVES \$75

The birds must be fed every two hours. Drafts must be kept off them. McDuff, finding time scarce on his hands, undertook to employ a man to look after the birds. The man came, heard the instructions. He left and never returned. The job of nurseman, kindergarten instructor and guardian was too much. McDuff is assisted in the care of the birds by his wife and children.

Training of the birds is begun at the age of six weeks. As soon as the weather is good the birds will be released from the loft and training will commence. Most of the birds will be used at Eugene, but others will be sent to the ranger stations. The real need for carrier pigeons is at the ranger stations, says McDuff, but the rangers have no time in which to train them. In spite of their care and expense, however, the carrier pigeons are invaluable to the forest service, asserts McDuff, who cites one instance last summer when a bird released in the forest, immediately after a fire was under control, reached headquarters in 30 minutes and made possible the dismissing of 15 men who were being held to send as reinforcements, should the seriousness of the fire require. The men were being paid \$5 a day, and the message carried by the pigeon saved the forest service \$75.

Wholesale Prices Show an Increase

Washington, March 20.—(U. P.)—Wholesale prices increased generally throughout the United States in February as compared to January, the labor department announced today. The increase was slightly more than .004 per cent. Lumber and building materials showed an increase of nearly 12 per cent.

Sort of Rubbing It In

Greensburg, Pa., March 20.—(I. N. S.)—After he had borrowed a dollar from his wife, J. R. Hurst, a well known character, went directly to a newspaper office and inserted a notice that he would not be responsible for any debts his wife might contract. The wife immediately instituted proceedings for divorce.

NICE, JUICY, TENDER T-BONE STEAK

"COOKED TO ORDER"

With French Fried Potatoes, 35c Special from 5 to 8 P. M.

JOHNSON'S LUNCH

266, Alder St., Bet. 3d and 4th.

This Week's Vote Offers In \$12,000 Prize Campaign

Again last week was history written with a strenuous one in the contest of 2,000 Prize Contest, and those who were smart enough and alert enough to take full advantage of the many big vote specialists piled up vast quantities of votes. And remember, votes win.

Labels, Etc.

4—Hazelwood butter parchment wrappers, 4—The Golden West Coffee cans, 6—King's dehydrated fruit cartons, 6—King's dehydrated vegetable cartons, 12—American Biscuits, 12—Hobson brand wrappers, 24—The Olympic flour sacks, 8—Coca-Cola labels, 8—The Crummett Rambler syrup labels, 12—Lemon Hot Sauce wrappers, 2—De N. Ray-A tea boxes, 6—Aunt Jemima pancake flour boxes, 6—Joy West breakfast food boxes, 2—Hatched evaporated egg (lbs.), 2—Sweetened Condensed Milk (cans), 2—Hessner Cocoa or chocolate cans (lbs.), 4—Mrs. Porter's Puddings labels, 4—King's Hamburger labels, 4—Ladle salt labels, 4—King's Candy box tops (lbs.), 25—Wrighty gum coupon wrappers, 25—Ladle salt labels, 2—Angelo California walnut sauce labels, 2—Angelo pickled walnut labels, 2—Grandma Cookies wrappers, 6—Grisham's Lard labels, 6—Jiffy-Jell dessert cartons, 6—Mrs. Schell's egg noodles, etc., labels, 2—Hessner Cocoa or chocolate cans, 2—Perfect brand Flavoring extracts, 3—Hazelwood Ice Cream cartons, 2—Ladle salt labels, 1—Milk container (on form at contest), 2—Hessner Cocoa or chocolate cans, 2—Pheasant broom special labels, 4—Snee-Dee cleanser labels, 4—Hessner Cocoa or chocolate cans, 4—S. O. S. Aluminum cleaner labels, 4—Hessner Cocoa or chocolate cans, 2—Santiseptic Lotion labels off bottom, 2—Hessner Cocoa or chocolate cans, 2—Rose Queen Toilet preparations labels, 2—Lacko furniture polish labels, 2—Deluxe Tea Labels, 1—Phoenix Fire Extinguisher label, 2—Shotwell shoe polish cartons, 2—French Maid auto polish labels (plat), 1—Morson spark plug cartons, 2—Hessner Cocoa or chocolate cans, 1—Coupon Book vote slip, 1—Magazine Subscription (from contest), 2—Ladle salt labels, 20—Old magazines (tied together), 40—Old newspapers (tied securely), 1—Ladle salt labels.

RECEIPTS

85—Stradivari photograph, receipt, 85—Schwartz Piano company, receipt, 85—National Lumber Co., receipt, 85—Knight Shoe company, sales slips, 85—Kathryn Coffield, sales slips, 85—Joustra, sales slips, 85—Schweitzer & Engle (tablets), receipts, 85—Chas. Frohman & Co., receipts, 85—Janzen knit wear, labels, 85—Union Laundry work slips, 85—Insurance Co. of N. Y. & Trust Co., 85—C. L. Ross Auto Co., receipt, 85—East Side Supply House sales slip, 85—Crisco Air Springs, receipt, 85—Hercules Battery Co. receipts, 85—Columbia Auto Lock, receipt.

SPECIAL NOTICES

5,000,000 votes given for each case of "Introductory Items" sold to stores. Get instructions at contest. (Double votes on ten cases, triple on fifteen, during week.)

27—Organizations may turn in votes only on Tuesday, Wednesday and Saturday. Extra votes on Thursday and Friday are announced.

Three "Big Combinations" required each week from each organization. Office hours 9:30 to 5 daily, except Saturdays. (Saturday we close at 1.) National Promotion company, 487 Washington street, Chicago, Ill.

COMBINATION "D"

1—Olympic Flour sack (basis 24 lbs.), 2—Grandma's cakes or cookies, 10—America's Best or Golden Bread, 20—Mrs. Schell's noodle, spaghetti or macaroni, 2—Hessner Cocoa or chocolate cans, 2—Hessner Cocoa or chocolate cans, 2—Hessner Cocoa or chocolate cans, 2—Perfect brand Flavoring Extracts, 2—Introductory Items, 2—Any contest Coupon Book.

COMBINATION "D"

1—Damascus Milk cans, 2—Calumet Baking Powder slips, 2—No. 10 Bar Soap, 2—Drop Washing Powder fronts, 2—Rose Queen Liquid Shampoo, 1—L. E. Rogers Handy box tops, 2—Santiseptic Lotion bottom labels, 2—Aunt Jemima Pancake Flour, 1—French Maid Auto Polish label, 1—Pheasant Broom special label, 2—Ladle Salt labels, 2—Mrs. Porter's Pudding or Mayonnaise, 2—Magazine or 50 Pack, 2—Introductory Items, 2—Any contest Coupon Book.

VOTES FOR NEW DEALERS

Two hundred and fifty thousand votes will be given organizations indicating any retail store in the territory to stock any of the contest products not now on sale by them, and securing therefor an order. Other blanks at contest office.

