

EVOLUTION OF FROG EGGS INTERESTING SUBJECT OF STUDY

A week ago freshmen students of biology at Reed college began acting queer. They skipped their meals, or ate hurriedly, they stayed up late at night, or didn't come home till morning, they "cut" classes, and passed up their friends. By Wednesday they had calmed down enough to explain their actions. They were watching frogs' eggs divide.

Every spring young biologists at Reed search the campus lakes for frogs' eggs and when a "setting" arrives in the laboratory all work is suspended while the early stages of development are viewed through a microscope. The original one-cell egg is drawn, and a few minutes later the observer sees wrinkles and depressions in the surface which gradually divide the egg into two cells. Possibly an hour later each of the new cells divides, and the student sketches hastily to catch the minutest change through every stage.

After the egg has become a 64 cell organism it divides less rapidly, and the biologist finds time to breathe, but he continues to watch, and he records his observations through the tadpole stage to froghood, complete with croaking apparatus. The unusual industry in the Reed biology laboratory is another sign of spring. The work is conducted under the direction of Professor Harry Beal Torrey.

Cooperative Wheat Marketing Outlined To Oregon Farmers

Spokane, March 19.—In response to an invitation from the Oregon Farmers' union, in session at the Dalles, to the Washington Wheat Growers' association to explain its plan of cooperative wheat marketing, Joseph Passonneau, Washington state market director, representing the United States department of agriculture at Washington state college, will outline the plan now being used in this state. Passonneau will be accompanied by Alma McCurtain, prominent wheat grower of Davenport, Wash., and a director in the Washington association, and W. J. Robinson of Pomeroy, Wash., secretary of the association and an extensive grower.

Much dissatisfaction has developed among Oregon farmers with the Tri-State Terminal company, according to reports, and it is expected that the meeting of the Farmers' union at the Dalles will definitely decide whether to continue marketing through this agency or whether they will adopt a purely cooperative plan, such as that proposed by the Washington growers.

River Road Travel Blocked by Slide Caused by Storm

Castlerock, Wash., March 19.—The recent heavy and continued rains caused part of the hill and a section of the river road, north of Lexington, to slide into the Cowlitz river, completely blocking travel, as there is no detour. Until the road is repaired, before work commences on the highway, travel between here and Kelso will be confined to the railway.

Miss Stella Dean returned home this week after an absence of 18 months in the service. She enlisted after fitting herself in the work of reconstruction and aid at Portland.

Crisis Faces Schools Of U. S., Says Miller

Aberdeen, Wash., March 19.—Declaring that the public school system of the United States faces a serious crisis, both educationally and socially, and that the teaching profession must be made attractive to able men and women, City Superintendent of Schools George B. Miller, made a strong plea before the Kiwanis club for the proposed 5 mill increase in taxes for the Aberdeen school district to provide better pay for teachers. The 5 mill increase will be voted upon at the coming general election.

District Lines Changed
Kelso, Wash., March 19.—The county commissioners changed the boundary of coking district No. 11, which includes the town of Woodland and the overflow land on the east side of the railway, from the Lewis river to the county road south from Woodland, which will save rippapping half a mile of river bank.

ELKS FINISH DEAL FOR THE PURCHASE OF NEW HOME LOCATION

At a meeting of Portland lodge of Elks No 142 Thursday night negotiations were closed for the purchase of a 100 by 150 foot tract at the southeast corner of Eleventh and Alder streets as a site of a proposed new Elks temple. The property has a frontage of 150 feet on Eleventh street and 100 feet on Alder and the consideration is announced at \$140,000 cash.

The 100 by 100 foot tract on the corner was purchased from the Corbett estate and the 50 foot lot adjoining it on the south was bought from Holzman Brothers for \$40,000. A gasoline filling station occupies the corner and an old residence, the lower floor of which is used for a repair shop, stands on the Holzman property.

The committee of Elks in charge of the purchase also announced that an option is still held on the Shemanski corner at Eleventh and Morrison streets. The option, which calls for the delivery of the property upon the payment of \$120,000, expires April 1. The Lincoln hotel now occupies this site.

Sunday Journal 5c
The big Sunday Journal—all the news of the day your newspaper or from your newsboy. Price 5c. Order your copy in advance so you'll be sure to get it.—Adv.



With Hot Chocolate
A cup of chocolate with a bit of sugar and cream is "a cup of chocolate." But a cup of chocolate with a teaspoon of HIP-O-LITE is *Marshmallow Chocolate*. Which is something to live for!

To really enjoy life, all you need is a jar of HIP-O-LITE. Your grocer has it.

HIP-O-LITE
a ready to use Marshmallow Creme

Eugene Girl Dies of Burns From Fireplace

Eugene, March 19.—Rosa Humphrey, 19, severely burned Wednesday while sitting before an open fireplace at her home in Eugene, died today at the Eugene hospital. She had often screamed when slightly alarmed and no attention was paid to her cries. She was the daughter of Mrs. Mollie Humphrey.

Grubb Is Confirmed
Ashland, March 19.—The appointment of Clerk Millard W. Grubb as assistant postmaster of the Ashland office has been confirmed. Grubb is an ex-service man and captain of the Oregon National guard.

Coos Bay Lumbermen Demand More Wages

Marshfield, March 19.—Norman Coleman, president of the Loyal Legion of Loggers and Lumbermen, is visiting Coos Bay. This evening he will attend a meeting at which a wage increase will be considered. Recently employees of the Buehner Lumber company of North Bend decided to demand a raise to \$5.30 a day minimum and finally agreed to defer action until the matter could be taken up by the Four L. The minimum now is \$4.50 a day.

Blondes in Drove For Rich Alaskan

Seattle, Wash., March 19.—(U. P.)—Postoffice corridors here were crowded with blondes today. An unknown man, who signed himself "Alaskan," advertised for a "blonde" wife by March 31, to carry out stipulations of a will whereby I am to receive a legacy of \$25,000 if married by that date.

Man Trains Down From 668 to 440

Atlantic City, N. J., March 19.—(I. N. S.)—Emory Tutman used to be a fat man; in fact, he was so fat that when he got into a little difficulty with the law in New York it was impossible to find a cell big enough to accommodate him; but now he weighs a mere 440 pounds, which is trifling compared with his former figure of 668. Emory says the secret of reduction is simple. He attained his present severe proportions by means of a few months' work in a Turkish bath and is willing to bet he

Gasoline at Baker Raised Three Cents

Baker, March 19.—Gasoline went from 32 cents to 35 cents a gallon here Thursday at all retail dispensaries. Standard Oil company reports a rise of two cents a gallon on lots of 50 gallons or more, provided the buyer furnish his own container. The price previously was 28 cents.

Plan New Highway From Shedd Across McKenzie to Eugene

Eugene, March 19.—Having received a number of petitions from residents both north and south of Coburg, asking for the building of a highway on the east side of the river, the state highway department has sent two engineers to look over the ground of the proposed east side highway, and to estimate costs.

It is proposed to extend the road directly south from Shedd, through Coburg over the McKenzie river and into Eugene, crossing the Willamette river at Eugene. It is thought that flood conditions favor the building of the road directly south from Shedd to Coburg, rather than by way of Harrisburg.

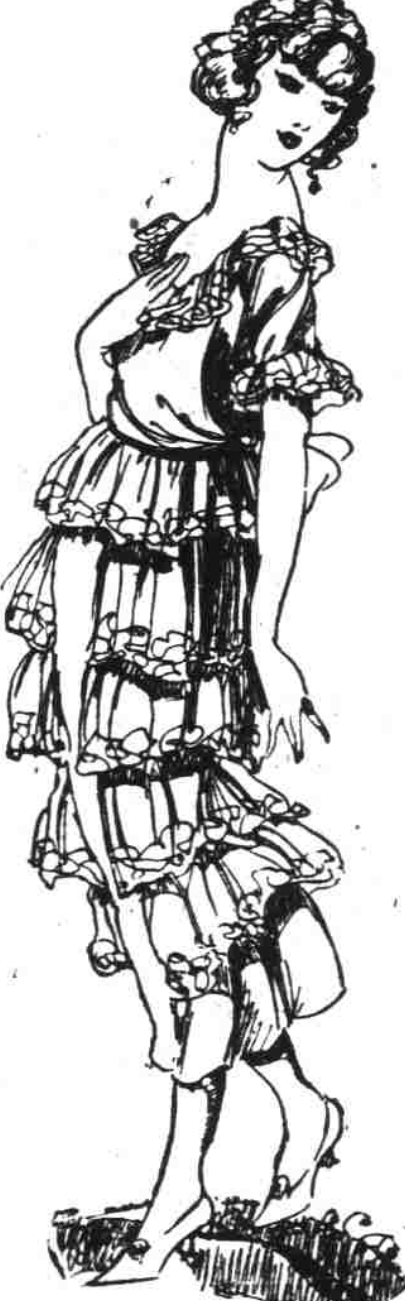
Harrisburg People Threaten Suspect

Albany, Or., March 19.—Had the charges against George Barley, contractor of Harrisburg, become known prior to his removal to Albany by Constable Cleland, Wednesday, on warrants alleging statutory offenses, it is likely he would have suffered mistreatment at the hands of the citizens of that city. Feelings are reported to be running high and threats have been made against him. A large delegation came to Albany on Thursday, at which time he was bound over to the Latin county grand jury. Bonds were fixed at \$3000.

WE ARE AGENTS FOR KABO CORSETS—STANDARD PATTERNS—FAMOUS NOTASEME HOSIERY SOLD HERE

Grand Opening

Of Our New Ladies' Ready-to-Wear Department



We have leased additional space on the second floor of our building. The ready-to-wear sections now larger and better than ever. The new arrangement practically makes this department a store in itself, not at all being interfered with from the other departments.

In order to make the opening of the new department of great interest to the women of Portland we have inaugurated a **Grand Opening Sale**.

We have made some wonderful buys for our grand opening and will offer them to the public at tremendous savings. Now, when merchandise is so high, it is

a pleasure to us to be able to offer such magnificent wearing apparel at such low prices.

The styles are the new things for spring in Suits, Coats, Skirts, Dresses and Waists. The varieties are so large it is hard to give descriptions. We are prepared with complete stocks and it will be our pleasure to serve you.

The prices quoted will be a magnet for many shrewd shoppers and good dressers who know big values when they see them. We have, therefore, arranged for extra help to give all good attention.

Tomorrow—Last Day of Grand Opening

DRESSES	Beautiful new Spring Dresses, all the wanted materials and an endless variety of styles to select from. Description would take more space than we could have. Come and convince yourself.	COATS	The great style sensation this season is the Polo Sports Coat. Come in the new bright shades and many styles of cloths.
\$26.50 Ladies' New Wool Jersey Dresses	\$13.95	\$30 LADIES' NEW SPORT COATS AT	\$17.88
\$35.00 Ladies' New Wool Jersey Dresses	\$17.95	\$40 LADIES' NEW SPORT COATS AT	\$26.88
30 ladies' new silk Dresses, Grand Opening price.....	\$18.88	\$50 LADIES' NEW SPORT COATS AT	\$34.88
45 and 50 ladies' new silk Dresses, Grand Opening price.....	\$32.88		
65 ladies' new silk Dresses, Grand Opening price.....	\$42.88		
20 ladies' new serge Dresses, Grand Opening price.....	\$12.88		
30 ladies' new serge Dresses, Grand Opening price.....	\$18.88		
35 ladies' new tricotine Dresses, Grand Opening price.....	\$23.88		

WAISTS	Hundreds of new wash and silk Waists for the Grand Opening. Two great special purchases in silk Waists will cause a sensation.	SUITS	Many styles and shades, beautiful models and fine qualities. Tricotines, serges and poplins.	SKIRTS	For dress or sports wear. Sports Skirts and Sports Coats are the very thing this season. Silks, Serges, Poplins and Plaids.
\$2.50 new wash Waists, special, Grand Opening price.....	\$1.44	\$30.00 LADIES' NEW SUITS NOW AT	\$19.88	\$6.50 Ladies' New Skirts	\$3.88
\$3.50 new wash Waists, special, Grand Opening price.....	\$2.44	\$50.00 LADIES' NEW SUITS NOW AT	\$34.88	\$9.00 Ladies' New Skirts	\$6.88
\$5.00 new wash Waists, special, Grand Opening price.....	\$3.44	\$75.00 LADIES' NEW SUITS NOW AT	\$53.88	\$12.50 Ladies' New Skirts	\$8.88
Extra! To \$10.00 beautiful new silk Waists, Grand Opening price.....	\$4.69			\$20 Ladies' New Skirts	\$13.88
Extra! To \$25 beautiful high-grade Waists, Grand Opening price.....	\$8.69				

No. 17 of a Series on "Know Portland and the Northwest"

Portland and Oregon

—served by splendid waterways and transcontinental railroads.

Portland and the state are fortunate in the matter of railways, as they are served by several transcontinental lines as well as a number of lesser roads. The lines which reach Portland through the Columbia River Gateway eliminate the Cascade Mountain haul, giving easy freight traffic.

On the North Bank of the Columbia, following a water grade route, the Spokane, Portland & Seattle Railroad (the joint property of the Great Northern and the Northern Pacific) wends its way, while the Union Pacific main line runs along the South Bank. The Southern Pacific also makes Portland its northern terminus. In the matter of interior waterways Oregon is particularly favored, having nearly 900 miles of navigable streams. These waterways have been utilized to only a limited extent for freight transportation so far, but it is probable that the future will see improved methods of navigation introduced.

The Ladd & Tilton Bank desires to serve in legitimate banking ways those who are endeavoring to bring Oregon's wonderful natural resources nearer to the markets, and offers the benefit of its sixty years' experience in the Northwest.

LADD & TILTON BANK

Oldest in the Northwest

MEMBER FEDERAL RESERVE SYSTEM

Washington and Third

Marvelous Bargains for Saturday!

The Manager of the Clothing Department announces a one day

Clothing Sale

that will attract scores of shrewd buyers. Every garment guaranteed. Perfect fit guaranteed. Alterations free. Sizes 34 to 44. Models of the latest designs for men and young men. All the new wanted shades.

\$25 Men's and Young Men's Suits

Tomorrow at

\$16.75

\$35 Men's and Young Men's Suits tomorrow at

\$24.75

\$50 Men's and Young Men's Suits tomorrow at

\$36.75

Hundreds should be here tomorrow to be fitted out in

SHOES

1000 pairs of Shoes offered for sale tomorrow.

LADIES' SHOES

\$6.50 Ladies' black kid Dress Shoes. All sizes. \$3.88

\$5.00 Ladies' Work Shoes, black calf low heels, all sizes, at \$2.69

\$10 Ladies' Brown Dress Shoes, all sizes, tomorrow at \$6.66

Broken lines Ladies' Shoes, small sizes, 2 1/2 and 3—pair 75c

MEN'S SHOES

\$5 Work Shoes, all sizes \$3.19

\$7.50 Work Shoes, all sizes \$4.93

\$13.50 Dress Shoes, all sizes \$8.95

\$8 Dress Shoes, all sizes \$5.19

\$10 Dress Shoes, all sizes \$6.95

CHILDREN'S

\$2.50 Child's Kid Shoes, sizes 1 to 5, at only \$1.45

\$3.50 Children's Scufflers, sizes 5 to 8, at only \$2.29

\$4.50 Children's Scufflers, sizes 8 1/2 to 11, at only \$2.88

\$5.00 Children's Scufflers, sizes 11 1/2 to 2, at only \$3.29

\$4.00 Boys' School Shoes, all sizes, at only \$2.66

\$6.50 Boys' Dress Shoes, all sizes, at only \$4.19

\$5.00 Girls' Calf Shoes, sizes 1 1/2 to 2, at only \$2.66

MEN

Come up tomorrow to our Men's Furnishing Goods Department. You will save big.

One Day's Sale on Men's Furnishings

MEN'S HATS

\$5.00 Men's Soft Hats tomorrow at \$3.65

\$7.00 Men's Soft Hats tomorrow at \$4.65

MEN'S SHIRTS

\$2.50 Sateen Work Shirts, tomorrow at \$1.48

\$1.50 Blue Work Shirts, tomorrow at \$1.09

\$2.50 Fine Dress Shirts, tomorrow at \$1.42

\$3.50 Fine Dress Shirts, tomorrow at \$2.48

To \$12.50 broken lines of Silk Shirts, choice at \$6.69

\$3.00 Flannel Shirts, tomorrow at \$1.69

TROUSERS

\$4.00 Whipcord Work Pants, tomorrow at \$2.69

\$6 Dress Pants, the pair \$3.95

\$8.50 Dress Pants, the pair \$5.95

\$14.00 All-Wool Serge Pants, the pair \$7.39

Levitt's

EVERYBODY'S STORE

Corner 4th and Washington
Main 440—We Deliver Everywhere