

EFFICIENT MARKETING

OREGON COUNTRY LIFE

EDITED BY J. F. LANGNER

BETTER FARMING

OREGON DAIRYMEN CONSIDERING PLAN FOR REORGANIZING

Members of the Oregon Dairymen's league may spend \$500,000 or more under a plan of reorganization by Aaron Sapiro of San Francisco.

The league has at present nearly 2500 members selling fresh milk in Portland and to creameries, condensaries and cheese factories within the 40 mile radius.

Under the present system, the Oregon Dairymen's league acts as an agent for the distribution of milk.

The association sets the price at which milk shall be sold to the Portland distributors, to condensaries and others.

The new Dairymen's league, if organized, will adopt the plan of the Oregon Fruitgrowers' association and the Washington and Idaho wheat men.

Twenty-seven local meetings have been held in various districts surrounding Portland, at which the proposed plan of reorganization has been unanimously endorsed.

At a meeting held at Hillsboro Saturday, over 300 dairymen present pledged themselves to support the organization under the new plan, and 422 signed contracts agreeing to market all their milk through the new association for a period of 5 1/2 years.

Power is given to the new Oregon Dairymen's Cooperative league to own and operate condensaries, butter making factories, creameries, cheese making plants and merchandise and advertise milk and the by-products of milk.

In addressing the dairymen, Aaron Sapiro threw some sideights upon the Oregon cooperative system which is of interest to Oregon farmers.

Sapiro stated that the Oregon cooperative law drawn up by Hector McPherson, professor of economics of the Oregon Agricultural college, is the best cooperative law in the United States, and that California would probably adopt a great many of the clauses contained in the Oregon law.

He also stated that the Oregon Dairymen's league is the only dairymen's association in the country which has the real confidence of the consuming public.

The new cooperative league will be controlled by a board of 25 directors, and the main office of the association will be in Portland.

The association is given power to organize a subsidiary corporation to build or buy or otherwise operate central distributing plants in Portland, and the condensaries and creameries and other plants in the business districts.

The contract offered the dairymen is provisional upon the signing up of not less than 75 per cent of all present members of the Oregon Dairymen's league.

The plan has the general approval of the officers of the league, who state that they expect to have no difficulty whatsoever in reorganizing under the new plan.

It is anticipated that the absorption of surplus milk by the league in its own plants will materially help to increase the price to the producer without putting an increased burden upon the consumer.

Several meetings are scheduled during the coming week, at which Aaron Sapiro, counsellor in charge of the association, under its new marketing plan, will be the chief speaker.

Farmers Are Using Farm Record Books

Albany, March 13.—Farmers of Linn county are using a great many of the farm record books, which have been issued by the farm management demonstration department of the Oregon Agricultural college.

The books are designed to assist farmers in the business organization of their individual farms. Nine hundred farmers in the county are using them at present and reporting enthusiastically on their use, says R. V. Gunn, farm management demonstrator.

"The records and accounts are serving at least a threefold purpose," pointed out Professor Gunn. "It gives each man a record and tells him just where he stands at the end of the year. It gives reliable information for correct filing of income tax returns. There are many other advantages which are too numerous to mention when the farm management helps the farmer out."

Poisoned Grain for Ground Squirrels

Albany, March 13.—Two tons of poisoned barley have been prepared and sent to the farmers in Linn county by County Agent S. V. Smith in preparation for a vigorous campaign against "chiggers." The grain is allotted to chairmen in each of the 125 school districts in the county, who in turn distribute it to the farmers applying for it. Barley has been selected as the most suitable grain for this purpose.

Good Feed Cheap (Hawaiian Molasses)

Your Agricultural College or the United States Department of Agriculture will advise you that Hawaiian Cane Molasses is equal in feeding value, pound for pound, with corn or barley.

We have just received a shipment of Hawaiian Cane Molasses, and offer it to you at about half the price of corn or barley.

It is easy to feed and enables you to use up all the roughage on the place. We will send you, on request, a little booklet telling you how to use it, or send you a sample barrel, 600 pounds, on receipt of \$12.00. Write today to:

PARROTT & CO. 145 Lewis Bldg., Portland, Oregon

SANITATION PAYS



Clean clothes and neat appearance of the milkster leave a good impression upon the visitor.

Livestock Questions Answered

By Dr. J. M. Jones, Veterinarian

Question—I have a 3-year-old cow which has had the lump jaw for the past two months. I would like to know if there is a cure for it. If so, kindly let me know.

Answer—Try potassium iodide in one dram doses, for eight consecutive days, skip three days and repeat. At same time paint swelling once daily with tincture of iodine. If this does not result in cure have a veterinarian operate on animal.

Question—I have a Jersey cow due to have a calf in one month. About two weeks ago her milk became so bitter and ill-smelling, when standing a while, that we could not use it. (a) What is the cause? (b) Any remedy? Shortly after I began to dry her up (she was milking about five quarts). About a week ago she was down to about four quarts. I then left off milking in the morning. Her bag did not seem to get very big at night, but after two or three days her bag "waxed" with some swelling, milk flow diminishing, milk stringy. (c) What is the cause? (d) How can I get her to dry up? (e) Or would it be better to milk her twice a day till she has her calf?

Answer—(a) Generally due to some bacterial infection in udder. (b) Have a veterinarian inject some of this milk under antiseptic precautions subcutaneously. (c) Same as (a). (d) Feed

dry feed and do not remove all of milk when you milk her twice a day. (e) If rest as regards milking before calving. This is especially so when you have udder trouble.

Question—Can a man contract glanders from a horse? Answer—Yes. Several veterinarians have died in this way.

Abortion—Sterility in CATTLE CONSULTATION FREE DR. M. HOWES, VETERINARIAN

Phone Taber 8800 1974 EAST STARK ST., PORTLAND, ORE.

GUARANTEE SALE

50 Registered Jerseys COQUILLE, OREGON

MONDAY, APRIL 12 GOLDEN GLOW'S CHIEF, St. Mawes and St. Lambert blood lines

Western Breeders Sales & Pedigree Co. 202 Wilcox Bldg., Portland Oregon

DIAMOND QUALITY SEEDS

For 1920 Plant Only The Best-

The increased cost of farming makes necessary the careful selection of seeds—improved varieties that produce profitable crops.

A Safe Guide to Quality and Fair Price

Our Seed Catalog and Planter's Guide is the standard reference for growers of the Northwest, listing our complete lines of Seeds, Trees and Shrubs, Fertilizers, Poultry and Bee Supplies, Sprays and Pesticides, Dairy Supplies and Equipment.

This handsome book is more than a Catalog. It's a true guide to Profitable Planting.

Your Name should be on the Mailing List ASK FOR CATALOG No. 120

Office and Sales Room S.E. Cor. Front and Yamhill Sts. PORTLAND, OREGON

Warehouse East First and Alder Sts. PORTLAND, OREGON

LIVESTOCK COMPANY FORMED AT CORVALLIS TO IMPROVE JERSEYS

Son of Golden Glow's Chief Purchased to Begin Work With Herds in This District.

The Pacific Livestock company is a new organization which has just been completed with headquarters in Corvallis. W. K. Taylor of Corvallis is president. The aim of the organization is to spread the popular Jersey breeding blood of the Golden Glow Chief strain throughout the state and to create a demand in the East for Oregon Jerseys.

The company began its work by buying what is considered the best living son of Golden Glow's Chief, who, besides his other good points, carries 75 per cent of the blood of Golden Glow's Chief. His name is Chief's Golden Glow of Ashford. Practically all of his life his value has never been realized, although he has produced several good daughters. The more living registered daughters than any other son of Golden Glow's Chief, despite the fact that he is only five years old.

Chief's Golden Glow of Ashford is a son of Chief's Evening Glow with a record close to 600 pounds of fat as a mature cow. She is considered one of the best cows in the college herd. Chief's Evening Glow has three full sisters in the Register of Merit, one being Old Man's Darling with 517 pounds of fat as a 3-year-old.

The bull is a half brother to the world's record cow, Viva La France, owned by Piggard brothers at Marion, and carries 100 per cent the same blood as Old Man's Darling, whose record of 887 pounds of fat made her the world's record Jersey for the senior 4-year-old class. She also won grand championship at the Oregon State fair this year.

This bull is reputed to be the best looking and most typical of any of the sons of Golden Glow's Chief. The plan of the organization is not only to use him on their own herds, but to offer him for service to the best stock in the state, and so spread the popularity and the demand for Golden Glow Chief blood.

dry feed and do not remove all of milk when you milk her twice a day. (e) If rest as regards milking before calving. This is especially so when you have udder trouble.

Question—Can a man contract glanders from a horse? Answer—Yes. Several veterinarians have died in this way.

Abortion—Sterility in CATTLE CONSULTATION FREE DR. M. HOWES, VETERINARIAN

Phone Taber 8800 1974 EAST STARK ST., PORTLAND, ORE.

Jersey Cattle Club To Hold Jubilee on First Week in May

The Oregon Jersey Cattle club will hold its second jubilee on May 4, 5 and 6.

Some of the main officials of the American Jersey Cattle club have promised to be on hand.

The program has not yet been made out, but likely will start with a banquet in Portland and a visit to all of the herds that the limited time will permit.

The visits will be in the nature of a series of picnics where the neighborhood folk will be invited to inspect the herds at the same time that the jubilee visitors are present.

Further announcement about the sales and the program for the jubilee will be given later.

GROWER'S ASSOCIATION NOTES

Roseburg, March 13.—The Roseburg unit of the Oregon Growers' association was organized in this city with an attendance of about 75 prominent fruit growers at the city hall. The state officers, headed by C. J. Lewis, were present. The new unit will cooperate with the state organization and through which all the business will be transacted from Roseburg. The committee chosen was: R. A. Busenbark of Melrose, Arthur Marsh of Looking Glass and R. W. Hinkley of Garden Valley. The growers were given many points of vital interest by Mr. Lewis regarding growing and the handling of fruit until it is packed for shipment.

At Myrtle Creek a similar organization was formed with Remick Fate, Sam Moore and E. Baird as the committee in charge. Riddle was organized the previous day.

Visit Market Personally A personal visit to the market which the shipper patronizes will more than repay expenses, for points which seem trivial to him are often very important to dealers, and the producer should get the proper market perspective. Such a visit enables the grower to get into personal touch with the distributors, to select a reliable representative, to learn the difficulties under which the car-lot receiver labors, and to appreciate the problems with which he is constantly confronted.

Question—Can a man contract glanders from a horse? Answer—Yes. Several veterinarians have died in this way.

Abortion—Sterility in CATTLE CONSULTATION FREE DR. M. HOWES, VETERINARIAN

Phone Taber 8800 1974 EAST STARK ST., PORTLAND, ORE.

GUARANTEE SALE 50 Registered Jerseys COQUILLE, OREGON

MONDAY, APRIL 12 GOLDEN GLOW'S CHIEF, St. Mawes and St. Lambert blood lines

Western Breeders Sales & Pedigree Co. 202 Wilcox Bldg., Portland Oregon

DIAMOND QUALITY SEEDS

For 1920 Plant Only The Best-

The increased cost of farming makes necessary the careful selection of seeds—improved varieties that produce profitable crops.

A Safe Guide to Quality and Fair Price

Our Seed Catalog and Planter's Guide is the standard reference for growers of the Northwest, listing our complete lines of Seeds, Trees and Shrubs, Fertilizers, Poultry and Bee Supplies, Sprays and Pesticides, Dairy Supplies and Equipment.

This handsome book is more than a Catalog. It's a true guide to Profitable Planting.

Your Name should be on the Mailing List ASK FOR CATALOG No. 120

Office and Sales Room S.E. Cor. Front and Yamhill Sts. PORTLAND, OREGON

Warehouse East First and Alder Sts. PORTLAND, OREGON

FINEST DANISH BUTTER SOON TO BE SOLD HERE TO BRING PRICES DOWN

A recent issue of the Market Reporter published by the United States department of agriculture, states that several thousand cases of Danish butter have been shipped to this country in recent weeks and that more of this butter is on the way. This butter is described as being a strictly high class article.

EXCELLENT BUTTER At present the butter market in this country is the highest of any country, by quotations per pound which naturally starts butter moving in this direction and in addition the exchange rates favor shipping butter to this country.

The shipping board has put on passenger cargo steamers fitted with refrigeration systems so that one will reach New York from the east coast of South America once in 10 days. Argentina is reported to have lots of good butter for export.

This is interpreted by some as a warning to the producer of butter fat in America that he should be prepared to receive a lower price for his product. The Danish farmer especially can sell

under our price because he has a lower cost of production. His cows produce about 8000 pounds of milk a year and cure about one half that much. He produces milk and cream from which high class butter can be made. Our farmers produce a grade of cream from which only relatively poor butter can be made because the average creamery operator will not refuse to take the poor cream.

PRICES TO DROP If we compete successfully with the Danes we must cull out the poor cows and quit buying poor cream. The creameryman and the farmer are jointly responsible for meeting the foreign competition of low priced butter of excellent quality: it is within their power to meet this competition by the farmer bringing about a lower cost of production and by the manufacturer refusing to attempt to manufacture butter from poor cream.

KEEP CALF PAILS CLEAN The farmer who uses the swill pail for feeding calves or who hangs the pail on a post between feedings without washing it will soon be looking for a cure for calf scours. The dirty calf pail is one of the chief causes of scours. With warm weather soon coming on extra precautions must be taken in caring for the calf pails. The same as the milk buckets after each milking the calf pail should be washed thoroughly after each feeding and sterilized either with steam or scalding water. If the pails are so handled and then inverted in a clean protected place until time to use them again this factor as a cause of scours will be eliminated.

FARMERS DISCUSS WAY TO KEEP A CLOSER TAB ON PRODUCTION COSTS

By C. C. Calkins, Sherman County Agent. Moro, March 13.—The time is coming when farmers should be able to present figures on the cost of producing different commodities in the opinion of the Sherman county farm bureau. Figures kept during 1919 show many wheat farmers are making but little profit at present prices when interest on the investment is considered. To this end they have been meeting in groups under the direction of project leaders to discuss methods of getting at these figures.

The local banks are furnishing record books free of charge, which they secured from the farm management office of the first of the year. With the help of County Agent C. C. Calkins and Farm Management Demonstrator R. V. Gunn these books have been so adapted that they will furnish the information needed for filling out the income tax report as well as reveal what it is costing to produce wheat on Sherman county farms. Figures presented show that it is costing between \$1.12 and \$2.25, depending on size of farm, kind of land, yield, management, etc.

By careful study of records consistently kept it will be possible to bring some of the higher figures down in the future. Graas Valley farmers met kept during 1919 show many wheat farmers are making but little profit at present prices when interest on the investment is considered. To this end they have been meeting in groups under the direction of project leaders to discuss methods of getting at these figures.

The local banks are furnishing record books free of charge, which they secured from the farm management office of the first of the year. With the help of County Agent C. C. Calkins and Farm Management Demonstrator R. V. Gunn these books have been so adapted that they will furnish the information needed for filling out the income tax report as well as reveal what it is costing to produce wheat on Sherman county farms. Figures presented show that it is costing between \$1.12 and \$2.25, depending on size of farm, kind of land, yield, management, etc.

By careful study of records consistently kept it will be possible to bring some of the higher figures down in the future. Graas Valley farmers met kept during 1919 show many wheat farmers are making but little profit at present prices when interest on the investment is considered. To this end they have been meeting in groups under the direction of project leaders to discuss methods of getting at these figures.

The local banks are furnishing record books free of charge, which they secured from the farm management office of the first of the year. With the help of County Agent C. C. Calkins and Farm Management Demonstrator R. V. Gunn these books have been so adapted that they will furnish the information needed for filling out the income tax report as well as reveal what it is costing to produce wheat on Sherman county farms. Figures presented show that it is costing between \$1.12 and \$2.25, depending on size of farm, kind of land, yield, management, etc.

By careful study of records consistently kept it will be possible to bring some of the higher figures down in the future. Graas Valley farmers met kept during 1919 show many wheat farmers are making but little profit at present prices when interest on the investment is considered. To this end they have been meeting in groups under the direction of project leaders to discuss methods of getting at these figures.

The local banks are furnishing record books free of charge, which they secured from the farm management office of the first of the year. With the help of County Agent C. C. Calkins and Farm Management Demonstrator R. V. Gunn these books have been so adapted that they will furnish the information needed for filling out the income tax report as well as reveal what it is costing to produce wheat on Sherman county farms. Figures presented show that it is costing between \$1.12 and \$2.25, depending on size of farm, kind of land, yield, management, etc.

By careful study of records consistently kept it will be possible to bring some of the higher figures down in the future. Graas Valley farmers met kept during 1919 show many wheat farmers are making but little profit at present prices when interest on the investment is considered. To this end they have been meeting in groups under the direction of project leaders to discuss methods of getting at these figures.

The local banks are furnishing record books free of charge, which they secured from the farm management office of the first of the year. With the help of County Agent C. C. Calkins and Farm Management Demonstrator R. V. Gunn these books have been so adapted that they will furnish the information needed for filling out the income tax report as well as reveal what it is costing to produce wheat on Sherman county farms. Figures presented show that it is costing between \$1.12 and \$2.25, depending on size of farm, kind of land, yield, management, etc.

By careful study of records consistently kept it will be possible to bring some of the higher figures down in the future. Graas Valley farmers met kept during 1919 show many wheat farmers are making but little profit at present prices when interest on the investment is considered. To this end they have been meeting in groups under the direction of project leaders to discuss methods of getting at these figures.

The local banks are furnishing record books free of charge, which they secured from the farm management office of the first of the year. With the help of County Agent C. C. Calkins and Farm Management Demonstrator R. V. Gunn these books have been so adapted that they will furnish the information needed for filling out the income tax report as well as reveal what it is costing to produce wheat on Sherman county farms. Figures presented show that it is costing between \$1.12 and \$2.25, depending on size of farm, kind of land, yield, management, etc.

By careful study of records consistently kept it will be possible to bring some of the higher figures down in the future. Graas Valley farmers met kept during 1919 show many wheat farmers are making but little profit at present prices when interest on the investment is considered. To this end they have been meeting in groups under the direction of project leaders to discuss methods of getting at these figures.

The local banks are furnishing record books free of charge, which they secured from the farm management office of the first of the year. With the help of County Agent C. C. Calkins and Farm Management Demonstrator R. V. Gunn these books have been so adapted that they will furnish the information needed for filling out the income tax report as well as reveal what it is costing to produce wheat on Sherman county farms. Figures presented show that it is costing between \$1.12 and \$2.25, depending on size of farm, kind of land, yield, management, etc.

By careful study of records consistently kept it will be possible to bring some of the higher figures down in the future. Graas Valley farmers met kept during 1919 show many wheat farmers are making but little profit at present prices when interest on the investment is considered. To this end they have been meeting in groups under the direction of project leaders to discuss methods of getting at these figures.

The local banks are furnishing record books free of charge, which they secured from the farm management office of the first of the year. With the help of County Agent C. C. Calkins and Farm Management Demonstrator R. V. Gunn these books have been so adapted that they will furnish the information needed for filling out the income tax report as well as reveal what it is costing to produce wheat on Sherman county farms. Figures presented show that it is costing between \$1.12 and \$2.25, depending on size of farm, kind of land, yield, management, etc.

By careful study of records consistently kept it will be possible to bring some of the higher figures down in the future. Graas Valley farmers met kept during 1919 show many wheat farmers are making but little profit at present prices when interest on the investment is considered. To this end they have been meeting in groups under the direction of project leaders to discuss methods of getting at these figures.

The local banks are furnishing record books free of charge, which they secured from the farm management office of the first of the year. With the help of County Agent C. C. Calkins and Farm Management Demonstrator R. V. Gunn these books have been so adapted that they will furnish the information needed for filling out the income tax report as well as reveal what it is costing to produce wheat on Sherman county farms. Figures presented show that it is costing between \$1.12 and \$2.25, depending on size of farm, kind of land, yield, management, etc.

By careful study of records consistently kept it will be possible to bring some of the higher figures down in the future. Graas Valley farmers met kept during 1919 show many wheat farmers are making but little profit at present prices when interest on the investment is considered. To this end they have been meeting in groups under the direction of project leaders to discuss methods of getting at these figures.

The local banks are furnishing record books free of charge, which they secured from the farm management office of the first of the year. With the help of County Agent C. C. Calkins and Farm Management Demonstrator R. V. Gunn these books have been so adapted that they will furnish the information needed for filling out the income tax report as well as reveal what it is costing to produce wheat on Sherman county farms. Figures presented show that it is costing between \$1.12 and \$2.25, depending on size of farm, kind of land, yield, management, etc.

By careful study of records consistently kept it will be possible to bring some of the higher figures down in the future. Graas Valley farmers met kept during 1919 show many wheat farmers are making but little profit at present prices when interest on the investment is considered. To this end they have been meeting in groups under the direction of project leaders to discuss methods of getting at these figures.

The local banks are furnishing record books free of charge, which they secured from the farm management office of the first of the year. With the help of County Agent C. C. Calkins and Farm Management Demonstrator R. V. Gunn these books have been so adapted that they will furnish the information needed for filling out the income tax report as well as reveal what it is costing to produce wheat on Sherman county farms. Figures presented show that it is costing between \$1.12 and \$2.25, depending on size of farm, kind of land, yield, management, etc.

By careful study of records consistently kept it will be possible to bring some of the higher figures down in the future. Graas Valley farmers met kept during 1919 show many wheat farmers are making but little profit at present prices when interest on the investment is considered. To this end they have been meeting in groups under the direction of project leaders to discuss methods of getting at these figures.

The local banks are furnishing record books free of charge, which they secured from the farm management office of the first of the year. With the help of County Agent C. C. Calkins and Farm Management Demonstrator R. V. Gunn these books have been so adapted that they will furnish the information needed for filling out the income tax report as well as reveal what it is costing to produce wheat on Sherman county farms. Figures presented show that it is costing between \$1.12 and \$2.25, depending on size of farm, kind of land, yield, management, etc.

By careful study of records consistently kept it will be possible to bring some of the higher figures down in the future. Graas Valley farmers met kept during 1919 show many wheat farmers are making but little profit at present prices when interest on the investment is considered. To this end they have been meeting in groups under the direction of project leaders to discuss methods of getting at these figures.

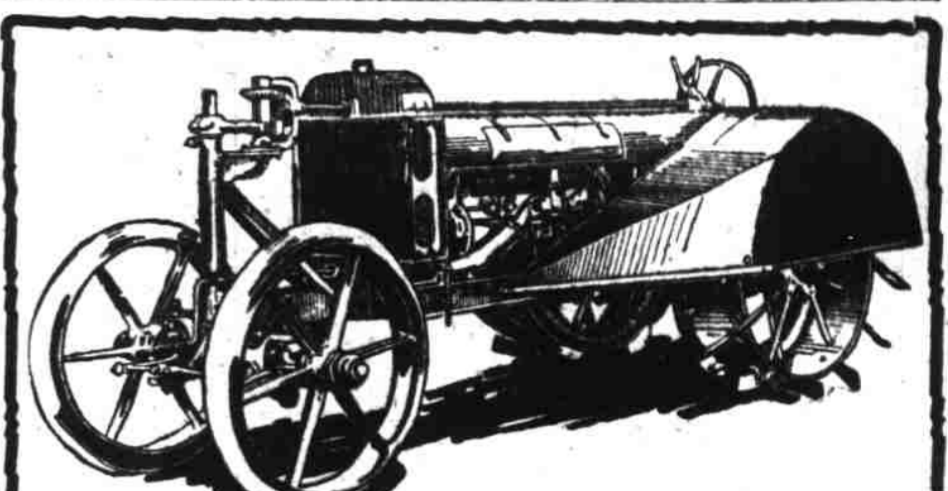
The local banks are furnishing record books free of charge, which they secured from the farm management office of the first of the year. With the help of County Agent C. C. Calkins and Farm Management Demonstrator R. V. Gunn these books have been so adapted that they will furnish the information needed for filling out the income tax report as well as reveal what it is costing to produce wheat on Sherman county farms. Figures presented show that it is costing between \$1.12 and \$2.25, depending on size of farm, kind of land, yield, management, etc.

By careful study of records consistently kept it will be possible to bring some of the higher figures down in the future. Graas Valley farmers met kept during 1919 show many wheat farmers are making but little profit at present prices when interest on the investment is considered. To this end they have been meeting in groups under the direction of project leaders to discuss methods of getting at these figures.

The local banks are furnishing record books free of charge, which they secured from the farm management office of the first of the year. With the help of County Agent C. C. Calkins and Farm Management Demonstrator R. V. Gunn these books have been so adapted that they will furnish the information needed for filling out the income tax report as well as reveal what it is costing to produce wheat on Sherman county farms. Figures presented show that it is costing between \$1.12 and \$2.25, depending on size of farm, kind of land, yield, management, etc.

By careful study of records consistently kept it will be possible to bring some of the higher figures down in the future. Graas Valley farmers met kept during 1919 show many wheat farmers are making but little profit at present prices when interest on the investment is considered. To this end they have been meeting in groups under the direction of project leaders to discuss methods of getting at these figures.

By careful study of records consistently kept it will be possible to bring some of the higher figures down in the future. Graas Valley farmers met kept during 1919 show many wheat farmers are making but little profit at present prices when interest on the investment is considered. To this end they have been meeting in groups under the direction of project leaders to discuss methods of getting at these figures.



RUSSELL Avery Six Cylinder The Ideal 2-Plow Outfit

Lowest clearance, easiest turning and quickest action. For orchard work it has no equal.

EIGHT distinct sizes of both tractors and separators. Territory Open for Live Agents Write for catalog showing complete line.

FEENAUGHTY MACHINERY CO. 309 E. Yamhill, Portland, Ore.



RUSSELL Tractors and Threshers

We are now getting in our supply of TRACTORS AND THRESHERS for spring delivery.

Call at our warehouse and allow us to explain why the Russell "Three-Speed" Transmission Tractor is proving so successful; also our up-to-date Threshers, Hullers and Sawmills

The A. H. Averill Machinery Co. 324 Belmont St. Portland, Oregon

MAIL THIS COUPON Send me full particulars and terms on "Russell" Tractors. I would also like to receive Free Outgoing describing literature checked [] Russell Tractors [] Birdwell Globe and Engines [] and Alhafa Mullers [] Russell Sawmills [] Threshermen's Supply List [] Name _____ Address _____

FREE TRIAL---OREGON SEEDS

We are convinced that our Oregon grown, acclimated seeds are superior, and know YOU WILL BE CONVINCED when you try them. LET THE SEEDS TALK.

We offer the following 7 regular sized packets (worth 55c) free, except we ask you to send 10c in wrapped coin or stamps to cover cost of labor, envelopes, mailing (mention The Journal):

- 1 pkt. Cabbage, Gill's Oregon Ballhead.....15c
1 pkt. Jersey Kale (Stock Feed).....10c
1 pkt. Squash, Delicious.....10c
1 pkt. Onion, Yellow Globe Danvers.....5c
1 pkt. Lettuce, Iceberg.....5c
1 pkt. Spinach, Victoria.....5c
1 pkt. Ruta Baga, Improved Purple Top Yellow.....5c

55c We will also mail you our 60-page catalogue describing our OREGON GROWN SEEDS, DANIELS, ROSES, PEPERONALS and STRAWBERRY STOCK. This offer good only once to each family. Mention this paper.

GILL BROS., SEED CO. Portland, Oregon Route 1

Best Stump Pulling Methods

Send today for Free Book. Yank out those stumps! Get bigger crops! Earn bigger profits! Our Catalog of Bull Dog Stump Pullers tells you how. Bull Dog Stump Pullers get your stumps out easier, quicker and cheaper. Both hand and horsepower models. Rock-bottom price. Read our catalog and be convinced. Write today. Immediate Delivery Guaranteed