

TEACHERS TO USE RIGHT TO CHOOSE BOOKS FOR STUDY

Selection to Be Held Thursday at Which Votes Cast Will Determine Texts for Children.

Final instructions to teachers for the selection next Thursday of school text books for use during the next four years, have been issued from the school administration office. For the first time in the history of Portland schools, choice of books will rest solely with the teachers who use them, each teacher having one vote for each book in her department. Heretofore the books have been selected by committees or by the superintendent himself.

In the grade schools will be selected arithmetics, readers, geographies, histories, civics, physiology and hygiene. In the high schools civics, commercial geography, commercial law, economics, typewriting, stenography, bookkeeping, English, French, Latin, mathematics, mechanical drawing and science books will be selected.

BALLOT TO BE SECRET

The election will be held from 3 to 3:30 p. m., March 4, at the different schools. A secret ballot according to the preferential system will be used. The counting of the ballots will be done entirely by teachers. Grade school principals will use special ballots and vote in the office of the superintendent not later than 5 p. m.

Elementary principals will vote on texts for subjects under their supervision.

Elementary teachers will vote on books for one grade only. If a teacher has classes in more than one grade she will elect which grade she will vote with.

High school teachers will vote on books for one department only. If a teacher has classes in more than one department, she will arrange with the principal and department heads as to which department she will vote with.

High school principals will vote on texts for subjects under their supervision.

The preferential system provides that a book receiving a majority of first choice votes will be adopted. If no book receives such majority, the second choice votes are added to the first choice votes. If this does not give a majority to any book, the third class votes are added, and the book receiving the highest total of first, second and third choice votes is adopted.

COMMITTEE TO JUDGE

The cooperative teacher committee in each building, both in the grade and high schools, shall act as election board, count the ballots when the polls close, and make tally sheets in triplicate. One copy will be filed with the principal of the school, one with the secretary of the cooperative committee and the other placed with the ballots and enclosed in an envelope with the name of the school placed thereon. The cooperative committee may appoint at least two teachers to work with them.

The envelope containing tally sheet and ballots shall be delivered to the superintendent's office not later than 5 p. m., where the principals' cooperative committee will act as an election board to receive the ballots, count the votes and make returns.

A canvass of the votes on school books for the grades will be made by the committee of nine and the principals' cooperative committee. A canvass of the votes on high school books will be made by the chairmen of the various high school cooperative committees. The canvass will be made in the superintendent's office immediately upon receipt of the returns.

The teachers' cooperative committees are composed of three teachers from each grade school. The principals' cooperative committee is composed of five principals of the Portland grade schools. The committee of nine is made up of representatives from three districts into which the city is divided, three from the primary grades, three from the intermediate and three from the advanced. The high school cooperative committee is composed of about seven representa-

tives from the high schools. Only teachers present may vote. Emergency teachers may not vote. Every teacher's vote will be secret.

SUPPLEMENT TO ISSUE

For whatever geography or civics is adopted, an Oregon supplement must be written according to law, or else one transferred from some text book previously in use. These supplements are usually written by some educator within the state. In the case of one geography submitted, the same as adopted last year for use throughout the state, Assistant Superintendent E. H. Whitney is already at work preparing a supplement to be ready for use in other Oregon schools next September. Provisions for Oregon supplements will be made for whatever texts may be adopted, after the election.

Three book companies have submitted texts.

The new system of having the teachers, themselves, elect the text books in response to an appeal by the teachers to be given this right.

Barber Fined for Having Moonshine Liquor in His Shop

Nine pints of moonshine, nicely wrapped and labeled as "Canadian Club Rye, Special Reserve," Monday caused E. T. Chandler, barber, of 246 1/2 Broadway, to pay a \$60 fine in municipal court.

Patrolman Nutter said he had heard that whiskey was being sold at Chandler's shop, but that when he investigated the barber denied having any for sale or on the premises. Nutter then showed his star and searched the shop. Since publication of stories to the effect that aviators were smuggling in whiskey from Canada, liquor forces declare there has been quite a sale of alleged Canadian whiskey.

5 New Boats May Be Sent to Alaska For Forest Service

Five new boats of the cruiser type may be added to the forest service patrol fleet for use on the Tongass and Chugach forests of Alaska, if arrangements for the transfer of such boats from the navy department are completed.

C. H. Flory, superintendent of Alaskan forests, has received word from Washington that five boats are available and may be transferred if necessary. Flory, who has been spending the month at the district forester's office, will leave for Alaska Monday to look over his business before going east to see the vessels, which are lying in various Atlantic harbors.

Extra Special MOLESKIN COATS

FOR MEN AND WOMEN
Combination Rain or Shine Coat

\$24

AN IDEAL MOTOR COAT

FOR TOMORROW ONLY

MEN'S GUARANTEED

RAINCOATS

Made of high-grade double texture Bombazine, stitched, strapped and cemented in every seam.

\$12.00

Usually Sold at \$20.00

United Rubber Co.
726 MORGAN BLDG.



Smart New Hats

The French-Inspired \$10
La Marquise Models

TAILORED and dress hats whose smart individuality suggests a much more exclusive pricing, are these clever models, bearing the La Marquise label.

—Simply tailored are many, while others show the trend of the mode in soft georgette facings and Paris-like flower trimmings.

—Youth and fashion are the key-notes of La Marquise hats—and so what more need be said?

—Third Floor, Lipman, Wolfe & Co.



THIS IS MALLINSON SILK WEEK—SEE THE SPRING EXHIBIT—SECOND FLOOR

Lipman Wolfe & Co

"Merchandise of Merit Only"

The Constant Arrival of New Spring Frocks and Coats

Prompts Us to Write of Their Charms

EACH DAY sees the arrival of wondrously beautiful garments, so varied in style, fabric and color that one hesitates to confine the description to particular models—so we shall speak generally of

The New Frocks—Priced \$28.75 to \$175

WITH such a vast price range you may be sure that there are scores of delightful frocks—tricotines, serges, mignonette, Poiret twill, jersey weaves, georgettes, soft taffetas and satins—in the most fascinatingly youthful styles—

ACCORDION pleats, crisp puffings, tiny ruchings, ruffles, embroidered sashes and rich silk braid and metal thread embroidery designs—briefly sum up the trimmings.

—Short or flaring sleeves—a few long sleeves, too, for those who prefer them.

—Take it all in all, we've never had such a wonderful assortment of lovely frocks to talk about and we could talk on and on—but we must speak of

The New Coats—Especially Those Priced \$43.75

THEY are of Check Velour, Honespun and Silvertone. Designed on the smartest lines—there's a certain tailored sports air that is as irresistible as it is indefinable. Belts, pockets and novelty buttons contribute greatly to this jaunty air.

—The smart new length is 40 inches—and of course these coats are—40 inches.

—In the most attractive out-door shades—

—Pekin, tan, Nile, Copen and rose check and Pekin check.

—One chic model has suede collar and leather belt.—All are lined with fancy Paisley silks.

—Scores of other new wearables already in and arriving daily make this store a veritable fashion center.

—Third Floor, Lipman, Wolfe & Co.



Women's Khaki Riding Breeches \$3.75

A SPECIAL SALE of extra heavy quality khaki breeches that are ideal for riding, hiking and mountain wear. They are made in regulation style, laced at side bottom and thoroughly reinforced.

—These are Oregon made and on special sale for

ONE DAY ONLY AT THIS PRICE!

—Third Floor, Lipman, Wolfe & Co.



W. B. Reduso and Youthline Corsets \$6, \$6.50

THE FIRST FITTING gives to the hardest-to-fit figure that coveted straight-line appearance, without any attendant feeling of discomfort.

—Hip lines are comfortably moulded into lines of slenderness—bust lines are nicely taken care of—and the abdominal reinforcements of these splendid models cause a general distribution of the flesh that gives one a comfortable feeling of being nicely proportioned and fashionably "straight up and down."

—If Nature was a little over-generous in the matter of flesh—you should select your model in W. B. Reduso and Youthline corsets—they are designed for figures over the average—a particular model for every type.

—Let our Expert Corsetieres fit you at once.

—Fourth Floor, Lipman, Wolfe & Co.



Semi-Annual Sale of Housewares!

THE first annual March housewares sale to be held in the new location of the Household Efficiency Section—on the Eighth Floor—marks a triumphal event in sheer value-giving never equalled before, even in this famed-for-values section.

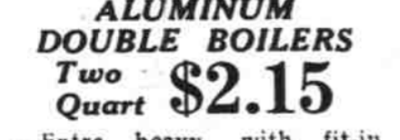
SO COME, housewives, prepared to supply your housewares needs in a sale that offers you Great Bargain Possibilities and Great Variety in needed housewares.



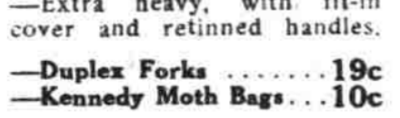
WHITE ENAMEL DISHPANS
14 Quart \$1.69
—With narrow blue edge.



10-QUART WHITE Preserving Kettles \$1
—Triple-coat white enamel preserving kettles with side lip and bail handle.



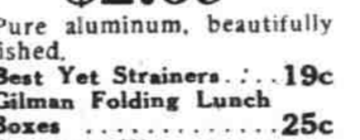
ALUMINUM DOUBLE BOILERS
Two Quart \$2.15
—Extra heavy, with fit-in cover and retinned handles.



—Duplex Forks19c
—Kennedy Moth Bags . . .10c



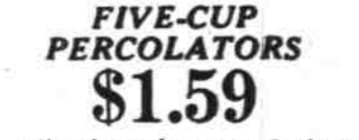
ALUMINUM CASSEROLES \$2.69
—Pure aluminum, beautifully polished.



—Best Yet Strainers . . .19c
—Gilman Folding Lunch Boxes25c
—Guernsey Ware, one lot, the piece10c
—Wooden Sink Racks, two sizes, 45c and55c



ALUMINUM COMBINATION SETS
Nine Pieces \$2.29
—Consisting of round double roaster, steamer rack, 5 cups and one pudding pan.



FIVE-CUP PERCOLATORS \$1.59
—All aluminum, 3-piece, handles.



HOUSEHOLD BROOMS 67c
—Good quality corn, fine stitching, varnished handles.



FLORENCE OIL HEATERS \$6.98
—For garage or basement.



1-PINT HOTAKOLD Vacuum Bottles \$2.25
—Enameled, with aluminum cup-tops. Extra fillers, special \$1.85; complete, \$2.25

Rotary Noodle Cutters . . .69c
Dhaphin Cream Dippers . . .39c
Simplex Washers98c
Folding Garment Hangers 10c
Trousers Hangers7c
Mail Boxes20c
Polita Steel Cleaners . . .10c
3 for25c
Common Clothes Pins
6 dozen10c
Dover Irons, set of 3 . . . \$1.98
Metal Towel Bars15c



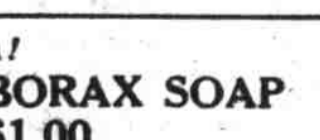
CLOTHES DRYERS 68c
—The Hilo—most efficient dryer made; folds up compactly when not in use.



TEA POTS 89c
—Brown English earthenware.



ALUMINUM TEA KETTLES Six Quart \$3.19
—Welded cast spout.



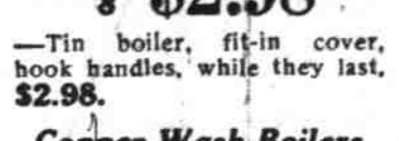
Nickel Soap Trays35c
Whisk Brooms15c

EXTRA! 20-MULE TEAM BORAX SOAP 20 Bars \$1.00

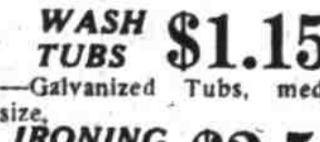
—Limit of 20—Delivered only with other goods.



COPPER BOTTOM WASH BOILERS No. 8 \$2.98
—Tin boiler, fit-in cover, hook handles, while they last, \$2.98.



Copper Wash Boilers \$6.98
—A few only at about wholesale cost.



WASH TUBS \$1.15
—Galvanized Tub, medium size.



IRONING BOARDS \$2.59
"Springer," medium size.



Galvanized Garbage Cans \$4.98
30-gal.

"Oh, Skinnay, I got some news for you!"
Tom SAWYER

NOW TO BE FOUND AT LIPMAN, WOLFE & CO.
\$4.50, \$5, \$6 FOR "REAL BOYS" 2 1/2 TO 8 YEARS

IN ALL the new styles—Olivers, middies, Junior Norfolk and Billy Boy. Made of fabrics woven especially for Tom Sawyer suits—the kind that give the best wear and service for real boys.

—They will not fade and will stand hard washing, made necessary by hard play.

TOM SAWYER SHIRTS AND BLOUSES \$2.25 to \$4.50, FOR BOYS 6 TO 16 YEARS

A COMPLETE stock of spring shirts and blouses—percales, madras and silk fibers. Perfect as to workmanship and fit. In clever stripes—all the popular shades.

—Fifth Floor, Lipman, Wolfe & Co.



HE WAS Goin' Some!

And just as the speedometer said 112 miles per hour, they struck a curve! !!

WALLY REID

IN "The Roaring Road"

A story of the racing track that will get you—AND "THE SPEAK EASY"

A Mack Sennett Super Laugh Producer



THIS STORE USES NO COMPARATIVE PRICES—THEY ARE MISLEADING AND OFTEN UNTRUE