

# Need for Improvement in Dairy Breeds to Increase Average Production

## STATISTICS SHOW MANY DAIRY COWS ARE UNPROFITABLE

### Thirty Per Cent of Dairy Cows Do Not Pay for Feed; Average Production Is 160 Pounds Fat.

By R. C. Stewart

More than 30 per cent of the so-called dairy cows in the United States are slackers at the pail. They pay neither for their feed nor care. This includes the small as well as the large herds of the country.

Statistics show that the average yearly production per cow is 160 pounds fat. In some herds the average production runs as high as 500 pounds fat. This would indicate that there is a big field for improvement.

In starting to improve a herd the first matter to be considered is which is the paying and which the non-paying cow. For many years the breeder relied upon individuality alone, culling for type and a few well established dairy characteristics.

### RECORDS EASILY KEPT

Top often mistakes were made. A seemingly perfect dairy type, giving a good record when put to the churn test would prove to be a non-profitable cow.

Since new methods of testing, namely the Babcock test, has been developed, records proving the worth of each individual cow in the herd may be easily kept.

The next step in improvement is proper culling out of the poor producer and breeding for higher production. This requires careful study and close attention to the production of each individual cow. In many instances it requires records covering at least two years to prove an animal non-profitable. Many herds that do not prove to be profitable in the first year will later develop into very profitable cows.

It pays to cull very closely, keeping the doubtful cases on probation until their merits have been carefully considered for some time.

### MAKE COWS PAY

From an economic standpoint the main thing is to be sure that every cow is paying for her keep. This means her feed but for the care and interest on the investment.

Careful breeding statistics show that only 2 per cent of the cows in the United States are bred to sizes of known ancestry, backed up by production records. Sizes of known quality are now available everywhere.

The man with several cows is able to buy a carefully selected sire and the man with but a few can readily get into a bull association, where, with the help of his neighbors, he can purchase the best blood available.

Another matter to be considered is feeding for better production. The labor costs are no higher in caring for high producing cows and the returns are much greater.

### INCREASE PRODUCTION

A herd of 91 cows in one association produced in 12 months a total income of \$38 over cost of feeding, or \$4 cents per cow. When the owner sends that bill to the book he is to be congratulated. The country is not yet so short of dairy products that anyone need milk such cows.

It is a well known fact that dairy cows to be profitable must be comparatively large producers. Yet few realize the remarkable rate at which the income advances as the production increases. Calculations of 5587 cow testing associations records of various parts of the United States, covering a period of four years, show that as the average butter fat production increased from 150 to 200 pounds the income over cost of feed advanced from \$21 to \$34. That is a net gain of 50 pounds or 32.13 per cent in production gave an increased income of 56 per cent over feed cost.

The next gain of 50 pounds raised the income over cost of feed to \$50; the next to \$63, the next to \$74, the next to \$87, the next to \$100, and the last to \$118.

### SELL POOR COWS

As the butter fat production increases from 150 to 200 pounds the income over cost of feed advanced from \$21 to \$34.

As the production doubled the income over cost of feed advanced from \$21 to \$34.

When the butter fat production increased



### MUSKRATS

Bringing Big Money

Rustle up all the muskrats you can and send to us now while we are paying the high top prices. You never got as much for your fur as we are now paying.

### WE ALSO WANT YOUR OTTER MINK RACCOON OPOSSUM and All Other Furs

We pay highest prices. We send you money at once. Write you a fair deal.

### GIVE US A TRIAL

## H. Liebes & Co.

Liebes Bldg., Portland, Or.

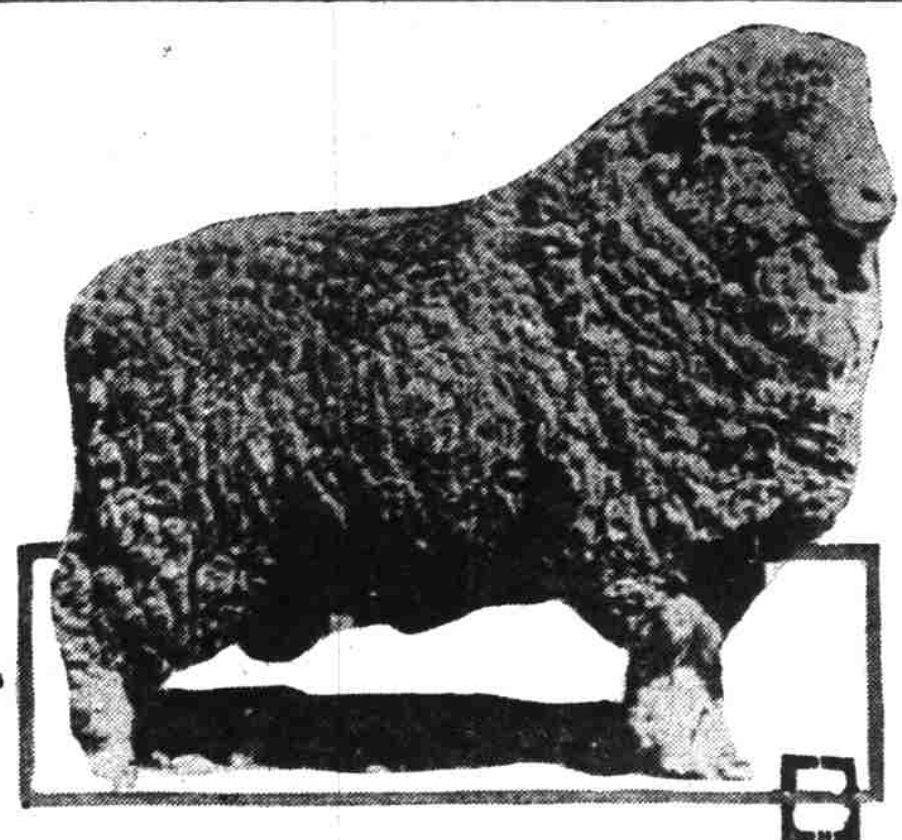
### CREAM

Correctly Weighted and Tasty. Quick Delivery. Shipping Express. PORTLAND and SEAS. Write for Dates and Shipping Tags.

## SWIFT & COMPANY

225 BROAD STREET, PORTLAND, OREGON

## FINE CORRIDALED RAM



This ram won first and special at Canterbury Metropolis show in 1919 and sold for 300 guineas (about \$375).

from 150 pounds to 450 pounds—that is, trebled—the income over cost of feed advanced from \$21 to \$100, or almost five times as much.

It seldom pays to sell a good cow, and it never pays to keep a poor one. It pays to know what they are doing. Here in the Northwest, where we have ideal feeds and climatic conditions, the vital thing is careful selection of a breed and proper care in breeding always for production.

### Livestock Questions Answered

By Dr. M. J. Jones, Veterinarian

Question No. 1—I have a cow that is running down by spells and then goes one or two days without eating. She was tested for tuberculosis about two months ago and was all right. There seems to be a doughy-like swelling between her front legs.

Answer—Your cow has probably taken some foreign body, such as a nail or a piece of wire into her rumen along with her food. This foreign body has worked its way into the heart. Treatment is useless.

Question No. 2—Will you please tell us what can be done with cows that are barren; that is, we do not seem to get with calf. I do not believe it is the fault of the bull, as all of the other cows are due to freshen.

Answer—The causes of barrenness or sterility are many even when the bull is eliminated as a factor. A too acid condition of the vagina will cause this condition. This can be corrected by injections of some mild alkaline solution. Washing and inflammation of the uterus or uteri constitute another cause. Gauze soaked in glycerine placed against the os tend to soften and correct this condition. Pus either in the os, body of uterus, cornu or fallopian tubes will prevent conception. To correct this the pus has got to be removed. Sometimes a dead foetus is present in the uterus or perhaps infection caused a mummified foetus. Infection severe enough to close the lumen of the oviducts is fatal as far as conception is concerned. One diseased ovary will sometimes prevent the normal activity of the non-diseased ovary. Removal of this one ovary will often result in a cure. Cystic ovaries are generally a bar to conception. Breaking these in some cases is beneficial. In other cases it only intensifies the inflammation that is present. Diagnosis of the various conditions is made by aid of special instruments and by examination of the ovaries, womb and fallopian tubes per rectum.

Question No. 3—What is the relation between the dose of medicine for a man and for a horse?

Answer—According to Qulman's Veterinary Materia Medica a horse takes 16 times the dose of a man. However it is safer to figure about 12 times. There is no fixed rule for such things. Some animals and some people are very susceptible to certain drugs and some drugs work one way on one animal and almost directly opposite on the next.

### Canby Farmers to View Berry Ranches

Canby, Feb. 21.—The farmers of the Canby district are to be given an opportunity to inspect the successful and prosperous berry farms of the valley in the Hubbard and Woodburn localities at the invitation of W. L. Bentley, representing the Puyallup and Sumner Fruit Growers' Canning company, which has just opened a receiving station in the former creamery building in Canby.

The trip is with a view to showing the farmers hereabouts, who have always specialized in general farming, and paid but little attention to the raising of berries and small fruits, unless it be for their own family use, just what can be accomplished with berries, how to prepare the soil, how to plan and then take care of them, as well as the plan for marketing. A general effort is being made to induce the farmers of this end of the county to devote more acreage to the growing of berries, it being argued that there is considerable more money in so doing than in any other kind of farming because of the great demand for canned berries, jams and fruit juices.

Sunflower Silage Fed  
Farmers in Tillamook county, in cooperation with County Agent Jones, are feeding sunflower silage, and indications are that sunflowers may prove as valuable in the cool coast districts where corn does not produce as satisfactorily as it has in the Eastern Oregon sections.

Non-Spillable Bucket Invented  
A new invention of interest to dairymen is a non-spillable sanitary milk bucket invented by P. W. Pick of Portland.

### FRESH COLUMBIA RIVER SMELT

\$1.75 for 50-lb. Box

## HEYES BROS.

285 YAMHILL ST., PORTLAND, OR.

## VALUE OF SILAGE FOR BEEF CATTLE BEYOND DOUBT, SAYS WRITER

### Field Animal Husbandman Makes Interesting Investigation in Union County.

By E. J. Fieldstead  
(Field Animal Husbandman)

To state that a day with the livestock men of Union county on a tour of inspection of silage feeding to beef cattle is worth while is putting it mildly. The following brief report of such a day will convince the most skeptical of the truth of the assertion.

The company, consisting of 30 interested men, was conducted under the able leadership of Floyd McKennon. There were two main questions to be answered by making this inspection trip. First, to note the value of silage in beef production, and, second, to note if there was any need for pure bred beef bulls in Union county. Both of these questions were answered plainly in the affirmative. Every lot visited where silage was used in the feeding showed unmistakable signs of doing well and that the cattle were making economical gains. Every party visited stated excellent results from using silage and all were enthusiastic boosters for this particular type of feed.

Practically all of the silage in use at the present time in this county was made from corn. Duncan McDonald, however, who is using sunflower silage, reported equal results with those obtained in using corn silage. McDonald also says he received as much tonnage from two acres of sunflowers as he did from six acres of corn.

### Lane Has Big Influx Of Purebred Cattle

Eugene, Feb. 21.—More pure-bred cattle have been brought into Lane county this year than in all the five years past. The Bank of Commerce recently brought to the county and sold to energetic farmers 22 head of Holstein heifers, and this week G. A. McPart of Harrisburg left for Omaha with a commission in his pocket to buy 42 head of Holsteins and four Guernseys. The Oregon Agricultural college has promised to sell 10 head out of the lot that it will ship direct from the island of Guernsey this spring. The Lane county fair directors announce their cattle sheds this year will comply strictly with the sanitary provisions of the pure-bred stock associations. There is a special awakening in the dairy industry since the announcement of the coming of a new creamery and the action of the local creamery company in increasing its stock and preparing to install the best of machinery. Farmers everywhere are talking pure-bred stock since the organization of the Lane County Pure-Bred Stock association.

### Cowlitz Cows' Health Good

Kelso, Wash., Feb. 21.—Cowlitz county cows are comparatively free from tubercular infection. State Veterinarian Cliff Ackley found only 24 tubercular reactions out of 450 cows tested. These cows will be slaughtered under supervision of a state veterinarian. Dr. Ackley will test more of the herds in the vicinity of Kelso.

## Avery Six Cylinder

The Ideal 2-Plow Outfit

Lowest clearance, easiest turning and quickest action. For orchard work it has no equal.

EIGHT distinct sizes of both tractors and separators.

Territory Open for Live Agents

Write for catalog showing complete line.

## FEENAUGHTY MACHINERY CO.

309 E. Yamhill, Portland, Ore.

## RUSSELL

### Tractors and Threshers

We are now getting in our supply of TRACTORS AND THRESHERS for spring delivery.

Call at our warehouse and allow us to explain why the Russell "Three-Speed" Transmission Tractor is proving so successful; also our up-to-date Threshers, Hullers and Sawmills

The A. H. Averill Machinery Co.

324 Belmont St. Portland, Oregon

MAIL THIS COUPON

Send me full particulars and terms on "Russell" Tractors. I would also like to receive Free Catalogue describing machinery checked [X]

[ ] Russell Tractors [ ] Birkdale Oliver and Alfalfa Tractors

[ ] Russell Sawmills [ ] Threshermen's Supply List

Name \_\_\_\_\_ Address \_\_\_\_\_

by Albert Hunter, as he is a horse man and interested particularly in beef cattle production. When the party reached Hunter's, the latter was questioned as to the location of his milking machine, and showed them five or six of his specially picked breed of hogs, a specimen of which was shown at the last Union county livestock show. Hunter says these pigs were taking all the milk from the cows, and the most deplorable feature was that the majority of the milkers belonged to a neighbor.

Summing up the trip, the following persons were visited: Robert Smith, Albert Hunter, Duncan McDonald, Harry Ruble, George Gray, experiment station, W. W. Green, W. E. Green, Charles Green, Sherman & Hutchinson, Lester Hempe, W. J. Townley, G. W. DeLay and Andrew Blokland. The party inspected 502 head of cattle that were being fed on silage as the larger part of their ration; other than this the party inspected the pure bred herds of the prominent Shortborn breeders near and about Union. During the day a distance of 82 miles was covered and the party reached La Grande shortly after dark. It was a unanimous vote that the trip was entirely successful and the two questions were answered, the one being the need for more pure bred bulls in the county to grade up the feeder class of cattle and to eliminate the many scrubs, magpies and nondescripts by substituting good feeder type of cattle. That this need was very apparent was answered to the satisfaction of all. The other, regarding the value of silage in a ration for beef production, was demonstrated beyond any question; that such feed as silage was beneficial in every respect, not only does it show greater economy, but it also shows greater rapidity of gains and nicer, cleaner condition of the animals.

### Association Will Handle Its Fruit By Sales Agents

Report That Northwest Exchange Will Handle Product of Oregon Growers Is Denied.

The Oregon Growers' Cooperative association is developing one of the finest sales departments on the Pacific coast, says R. C. Paulus, in a letter to "The Journal," dated February 14.

Statements in the public press that the Oregon association is to market its fruit through the Northwestern Fruit exchange is indignantly denied by Professor Lewis, who is in charge of organization. "No such action has ever been thought of nor contemplated," said Professor Lewis.

"Paulus is in the East at the moment getting together a real sales department, which will be able to handle all the fruit of the Oregon Growers' association."

IMPRESSION IS CORRECTED

J. F. Langner of The Journal, who attended the Skookum Packers' convention and spoke on the value of advertising says that no such suggestion was put forward at the Skookum Packers' association meeting.

The Northwestern Fruit exchange is not a cooperative marketing association of fruit growers, but by no possible combination of circumstances, it is said, can the Northwestern Fruit exchange handle the Oregon Growers' association crop.

Some members of the association believe that the rumor that the Oregon growers had made arrangements with the Northwestern Fruit exchange to market its fruit had been prompted by

### Jerseys for Stanfield

A dozen Stanfield farmers recently purchased 50 head of high class Jersey cattle for the improvement of their herds. Of the 50 head, 15 registered cows and two bulls were from the J. C. Brown ranch, and 11 registered cows and 27 grade cows were from the J. C. McConnell ranch, also of Shedd.



### Increase Your Farm Profits

This farm belongs to a man whom his neighbors call the man with an open mind. He always has to be shown; but he is always ready to be shown.

He does not clutch blindly at each new thing, nor does he cling forever to every ancient, rusty practice. New methods submitted to him are examined sanely and thoroughly tested.

It was told to this farmer that the Milwaukee Air Power Pump Co. representative in his county was an expert, trained to install, on a separate, special plan for each farm, a water and light system that would increase the farm's value and profits. He had the water run direct from the well and cistern every time the faucet was turned. This farmer went to the trained representative. With many questions, the farmer searched for exact facts. He was convinced. The system was installed.

His farm, shown in the above illustration, now has water piped directly from well and cistern to farmhouse, barn, lawn, watering trough and dairy; and there's electric light in all buildings.

Our representative has been trained. Do as this farmer did—talk to our representative; there's no charge for consulting him. Let him convince you that he knows how to make your farm worth more, besides making you bigger profits. We have a representative in your county. If you don't know him, write us.

## FARM UTILITIES CO.

281 East Morrison St., Portland, Ore.



Waukegan Water System  
ELECTRIC LIGHT SYSTEM

## Turn Waste to Profit

High prices make it necessary to employ every means for saving time, labor and elimination of waste. With these selected dairy supplies you increase your profits. Clip coupon and mail to Monroe & Crisell, Portland, Oregon.

### Burrell (B-L-K) Milkers

With a B-L-K Milker you are independent of careless hired help. It accomplishes six men's work with the aid of one man and a boy. The milk giving capacity of your cows is developed and the milk is kept clean. Fill out coupon or send postal for further information.

### Headquarters for— Buhl Sanitary Milk Cans

Papee Cutters  
Gas Engines  
Milk Cans  
Separators  
Milking Machines  
Babcock Testers  
Creamery Supplies  
Barn Equipment  
Free Catalogues on Request

### Papee Ensilage Cutter

"Own your own Papee." An economic necessity where stock is fed from silos. Guaranteed to throw silage to height of any silo. Send for information regarding ensilage and ensilage cutters.

## MONROE & CRISELL

Twenty-five years in the Dairy Supply business—"Everything for the Dairyman."

91-D Front St., Portland, Or.

interests who are always opposed to the fruit growers organizing for cooperative marketing.

### WARNING IS GIVEN

Aaron Sapiro of San Francisco whose plan of organization was accepted by the Oregon Growers' association, and who urged the members of the Skookum Packers' association to adopt a similar selling policy, says: "The growers may constantly expect attempts to disrupt their organization, and it is a favorite sport of California speculators to tell the organized fruit growers of that state that their executives are trying to sell them out."

The sales policy of the Oregon Growers' association is directed by a board of 21 directors and the Oregon Growers will market their fruit with an Oregon label, through their own association under sales management of R. C. Paulus of Salem, who has made such a notable success of the Salem Fruit union.

### Lakeside Great Dairy Producer

Eugene, Feb. 21.—The Lakeside section of Lane county, just south of Florence, is developing into a great dairy center, according to H. T. Weiser of the extension department of the Mutual Creamery company. Just returning from that lake section of the county, Mr. Weiser says that many farmers are milking from 50 to 75 cows each and that almost all dairymen in that part of the state are increasing their herds.

### Fruit Tree Shipment Condemned

Centralia, Wash., Feb. 21.—A large shipment of young fruit trees from a Tappan nursery was condemned by District Horticulturist Theo Albert, as the roots had apparently been frozen.

## LENSCH BROS.

241 Front Street, Corner Main, Portland, Oregon

Headquarters for Hay, Grain Feed, Garden Seeds, Beet Pulp, Fisher's Dairy Feed and Poultry Food

### Fluhrer Bros.' Shingles

FULL LINE OF GROCERIES  
LOW CASH PRICES

## Don't Break Your Back

\$23.65

Use IRON AGE NO. 306 Combined Tool and make your gardening a pleasure. Four tools in one: Drill Seeder, Hill Seeder, Double Wheel Hoe and Single Wheel Hoe. The most complete tool of its kind on market. Write today for IRON AGE BOOKLET.



REWADE & CO. SINCE 1865  
320 HAWTHORNE AVE., PORTLAND  
248 HOWARD STREET, SPOKANE

## BULL DOG STUMP PULLER

a new and better

Sturdy, compact machine of new design. Light but strong. Few parts. All solid steel castings of tubular construction. No bolts, no joints. Plenty of power. High and low speed and reverse gears. Cables, blocks and take-up built for hardest wear. Complete equipment with every machine.

BOTH HAND AND HORSE POWER

Choose the machine you need. Hand machine develops 30 or 60 tons. Horse machine 60 or 90 tons. Hand machine weighs 175 pounds. Horse machine 350 pounds. Sold on a straight cash basis. No agent's discount, no special offers. Every dollar of price represents a dollar's worth of value.

Write today for our illustrated catalog.

## MOORE STEEL CO.

2745 26th Street  
San Francisco, California

Send free of charge and obligation your illustrated catalog of BULL DOG STUMP PULLERS.

## Turn Waste to Profit

High prices make it necessary to employ every means for saving time, labor and elimination of waste. With these selected dairy supplies you increase your profits. Clip coupon and mail to Monroe & Crisell, Portland, Oregon.

### Burrell (B-L-K) Milkers

With a B-L-K Milker you are independent of careless hired help. It accomplishes six men's work with the aid of one man and a boy. The milk giving capacity of your cows is developed and the milk is kept clean. Fill out coupon or send postal for further information.

### Headquarters for— Buhl Sanitary Milk Cans

Papee Cutters  
Gas Engines  
Milk Cans  
Separators  
Milking Machines  
Babcock Testers  
Creamery Supplies  
Barn Equipment  
Free Catalogues on Request

### Papee Ensilage Cutter

"Own your own Papee." An economic necessity where stock is fed from silos. Guaranteed to throw silage to height of any silo. Send for information regarding ensilage and ensilage cutters.

## MONROE & CRISELL

Twenty-five years in the Dairy Supply business—"Everything for the Dairyman."

91-D Front St., Portland, Or.