

NATION'S WEALTH DECREASING, SAYS CURRENCY CHIEF

John Skelton Williams Declares High Prices and Low Production Dangerous.

Washington, Feb. 12.—(I. N. S.)—Increasing prices in products produced and consumed by the American people, with a decrease in the output of essential and basic commodities, must be checked if normal conditions are to be restored, said John Skelton Williams, comptroller of the currency, in his annual report today to congress.

"We are facing different problems," he said. "The heavy decline in the production of coal, which was more than 140,000,000 tons last year, with shrinkages in the production of other commodities, put us in the position with inflated prices of trying to lift ourselves by the bootstraps."

APPEARANCES DECEPTIVE
"By producing less and charging our people two or three times the normal price for the lessened product, we may appear to be growing richer. The figures tell us that our wealth is actually decreasing, and that the inflated prices which we give to producer and manufacturer do not constitute actual increasing wealth."

Taking up the situation in Europe, Mr. Williams expressed an optimistic opinion on its ability to say: "The people of the confederate states, after an unsuccessful war, got not one penny for their great holdings of confederate bonds and currency, yet those states recovered in a few years," he said.

"The impossibility of demanding gold coin from Europe will be realized when we remember that all of the gold coin and bullion in the world, aside from the \$5,000,000,000 we hold in the United States, is estimated at scarcely \$5,000,000,000. We as a people must use the sagacity and foresight of the businessman who protects and helps the embarrassed creditor having good prospects for restoration and future success."

INSANE CAPACITY DEPILORED
He urged the end of "extravagance, indulgence, luxury and display," in this country. He told the bankers of the country that they have not yet put a "limit on the crazy capacity developed by some of our leading industries, and among men who should know better." He expressed the hope that a general leveling of economic factors would take place, with the country bending every effort to increase the production of commodities and products that "constitute the real and basic wealth of any nation."

Political Crisis Is Confronting Liberal Party in Scotland

Paisley, Scotland, Feb. 12.—(U. P.)—The effort of the British Liberal party to stage a "comeback" was in the hands of Scottish voters today. Upon the success or failure of Herbert Henry Asquith, former premier and outstanding leader of the Liberals, political observers said, depends much of the future strength of the party.

Asquith is candidate for the seat of Paisley district in the house of commons in today's bye-election, brought about by the death of Sir J. M. McCullum, Independent Liberal, who was elected in December, 1919. His election will give the Liberals a sorely needed "strong man" in parliament. The former premier's opponents are J. M. Biggar, Laborite, and J. A. D. McKean, official Coalition Unionist. In the last election Biggar was defeated by a narrow margin. He is conceded to be the stronger of Asquith's opponents.

President Wilson Will Order Future Cabinet Meetings

Washington, Feb. 12.—(I. N. S.)—President Wilson's cabinet has been informed that there will be no further meetings until ordered by the president. Secretary of State Lansing today stated that he had sent letters to all members of the cabinet transmitting these instructions.

Secretary Lansing refused to comment on the reason for the action and declared it was a White House matter. "No comment was forthcoming from the White House, but it is understood that the president desires to preside over cabinet meetings in the future and that no further meetings will be held until he is able to preside."

World's Greatest Dirigible Is Urged For American Navy

Washington, Feb. 12.—Plans of the navy department for the construction of the largest super dirigible in the world were presented to the naval affairs committee by Captain C. Craven, director of naval aviation. He asked for an appropriation of \$2,700,000 for this purpose.

The specifications of the proposed aerial dreadnaught, the committee was told, call for a length of 994 feet. The new vessel will require at least a year to build.

A crane which can be taken apart and converted into a stool is a French invention.

Order Your Candies Now Saturday Is St. Valentine Day

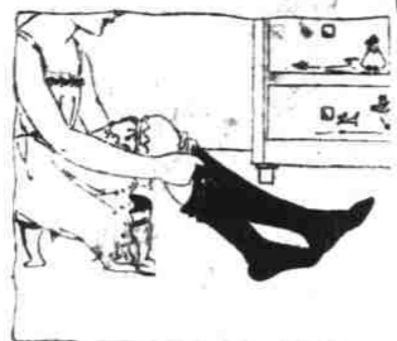
A Box of Our Delicious EFFERMAYS, TRUFFLES, MOCHA STRAWS or FILLED CHOCOLATES would be most appreciated as a dainty "VALENTINE."
—Sweets Booth, Street Floor.

Lipman Wolfe & Co. "Merchandise of Merit Only"

Clever Valentines

of sentiment and humor.
5c to 25c
—Street Floor, Lipman, Wolfe & Co.

Greatest One-Price Hosiery Event of the Year



EAGER throngs of women have made great inroads in the enormous supply of these splendid hose, but there were 12,000 pairs to start with, so there are plenty left for you to supply your present and future needs—and indeed you should at this price.

—They are splendid quality lisle hose with hemmed garter tops, reinforced toes and heels. Also the popular drop-stitch effects.
BLACK, BROWN, GRAY, BLUE and WHITE in the plain and drop stitch. ALSO WHITE STOCKINGS WITH COLORED STITCHINGS IN SHADES OF BLACK, BROWN, BLUE, GREEN and HELIOTROPE

—Colored stitchery promises to enjoy much vogue this season—the stitchery to match summer frocks.
—Dealers will not be supplied. All sales restricted.

Buy These Hose by the Half Dozen at \$4.25

—Street Floor, Lipman, Wolfe & Co.

75c

Corsets and Corsetiere Service

—First, the selection of the best model and then the correct fitting of that model to the individual figure.
—That is our conception of

True Corset Service

—It is what you are assured of when you buy a corset here.
—We carry a number of the BEST MAKES of corsets and employ saleswomen who are, first of all, EXPERT FITTERS.
—This week we have a

La Vida Model Special at \$5

—Fourth Floor, Lipman, Wolfe & Co.

Sale 6000 Pairs of Men's Sox

—Six thousand of them, men—6000 of the best values you'll be likely to see for many a moon. For they were specially purchased and even more specially priced—in fact, the sale prices are lower than their cost price would be to us today. BUY LIBERALLY!

—Medium weight cotton sox, very durable. Black, gray, navy, cordovan. First quality—all sizes.

—Seconds of pure silk hose, high spliced -lisle heels and toes and lisle-tops. Black, gray and cordovan. Also some "fancies."

—Seconds of pure thread and silk finish sox which sell regularly for several times as much. Lisle tops and feet.



25c 39c 59c

6 Pairs \$1.40 6 Pairs \$2.25 6 Pairs \$3.25

—Men's Shop, just inside Washington St. entrance.

SPECIAL!

Women's Underwear

Lisle Vests 65c

—Women's fine ribbed lisle vests, low neck, sleeveless, finished with tailored band top. Sizes 36 to 44.

Silk Top Union Suits \$2.50

—Women's low neck, sleeveless knee length union suits in pink, reinforced at crotch and under arm.

—Street Floor, Lipman, Wolfe & Co.

Tumblers, Set of Six 75c

—Thin blown tumblers in cut star design and four popular etched patterns.

The Blouse Sale—\$5



STILL attractive assortments left—in fact, you will find a wonderful selection in these beautiful blouses, which have been so radically reduced.

Georgettes Washable Satins In Shades of White, Flesh, Navy, Gray, Peach and Bisque

—Embroidery, laces, tucks, pleating and hemstitchery are used by way of garniture. A variety of neck effects.

—Third Floor, Lipman, Wolfe & Co.

New Spring Checks 56-Inch the Yard \$3.50

BLACK and white spring checks for suits and skirts! Beautiful quality goods of fine heavy weight, designed not alone for smartness, but for long and satisfactory service.

—Checks are exceptionally good for spring—and We Have a Most Complete Line!
—Second Floor, Lipman, Wolfe & Co.

The NEW Top Coats! For Immediate Wear



—Just what smart women are seeking—moderately priced at \$37.50, \$45, \$62.50 to \$115

Polo Cloth, Homespun and Camelshair

—fashion these dashing smart tailored coats, the very breath of spring emanating from their trim lines and their fresh, new shades.

Tan, Nile, Rose, Pekin, Gray and Reindeer

—36, 40 and 48 inches are the decreed lengths for spring coats.
—Narrowly belted with trim patent leather belts or belts of the fabric novelty pockets and rows and rows of stitchery are employed to give

Smartening Touches

—Lined throughout or semi-lined are they.
—In short, they are just the models to attract discriminating women by their smartness quite as much as by the fact that they provide necessary protection from chill spring winds, and will be found to be an indispensable part of one's summer wardrobe.

A MOST INTERESTING DISPLAY!

—Third Floor, Lipman, Wolfe & Co.

White Wash Satin 36 Inches Wide the Yard \$2

Splendid Quality—Limited Quantity

—That should be your cue to COME EARLY and BUY HEAVILY!
—This splendid washable satin at so low a figure needs no eulogy—as every woman knows its superiority for daintily exquisite underwear.

—Second Floor, Lipman, Wolfe & Co.

New Tailored Hats

Priced from \$4.50 to \$8.50



—Extremely smart and jaunty are the new tailleur styles in hats. Of Lisere, Patent-Milan and Pineapple straws in a number of becoming shapes—

—Tricornes, poke-effects, double brims and regulation sailors. Black, navy, brown, purple, sand and pekin.

Wonderfully Good Looking!

—Third Floor, Lipman, Wolfe & Co.

Your Luggage Will Last
—if it be of the Mendel Drucker or Miller-Closman variety—positively made to withstand the ravages of "baggage wreckers!"
Mendel Dustproof Wardrobe Trunks and Miller-Closman Bags
Are Sold Here Exclusively.
—Fifth Floor, Lipman, Wolfe & Co.

Honey Comb Bed Spreads \$3.85

—Full size, heavy weight, hemmed honey comb spreads of perfect quality. Assorted patterns. \$3.85 is about present replacement cost! 80x90 inches.—Second Floor.

1200 Bath Towels 50c

—An extraordinary sale of liberal sized towels of fine two-ply yarn, assuring long wear. Perfect quality, pure white bleached. Plain or colored bordered.—Second Floor.

1200 Huck Towels 30c

—Extra special—red bordered huck towels, 18x36 inches. Excellent for hotel, rooming house or everyday home use. Hemmed ends. Extra special by the dozen, \$3.25.

81x108 Wearwell Sheets \$2.25

—A limited number of these excellent quality sheets to sell at this low price, which is below replacement price. Full bleached. Neatly hemmed. Limit 6 to a buyer. Friday only at this price.—Second Floor.

Sale of Toilet Preparations and Household Drugs

—Prepared in the Lipman, Wolfe Laboratories. These special prices hold for Friday and Saturday only.

These Special Prices for Three Days Only

- Glycerine and Rose Water, 6 oz. 18c
- Epsom Salts, 1 1/4 lbs. 11c
- Castor Oil, 8 oz. 37c
- Moth Balls, 10 oz. 19c
- Dobell's Solution, 16 oz. 19c
- Rechelle Salts, 3/4-lb. 22c
- Boric Acid, 8 oz. 16c
- Sulphur Powder, 8 oz. 9c
- Upjohn Hospital Special Thermometer 1.20
- Red Rubber Tubing, 5-ft. length 19c
- Naphthaline Flakes, 10 oz. 19c
- Pure Olive Oil, 6 oz. 38c
- Eucalyptus Oil, 2 oz. 23c
- Camphorated Oil, 3 oz. 39c
- Solution Boric Acid, 12 oz. 17c
- Rose Water, 6 oz. 17c
- Flaxseed, ground or whole, 1 lb. 19c
- Paraffin Oil, 16 oz. 38c
- Casars Aromatic, 2 oz. 21c
- Alum, powdered or lump, 1 lb. 27c
- French Chalk, 12 oz. 16c
- Casars Bark, 8 oz. 21c
- Tyrene Invincible Fountain Syringe, special 1.19
- 1 lb. Hospital Cotton, special 53c
- Loofah Bath Sponge 10c

Combination Offer Very Special!

Velvet Furniture Polish
CCC Washing Compound
Triple Strength Household Ammonia
CCC Cleaning Compound
\$1.20 for the Four

Myreal Hair Remedy We Guarantee It

—This coupon with one dollar entitles holder to one bottle of Myreal Hair Remedy. You save 1-3. (Coupon void after Feb. 14, 1920.)



Many Women Are Taking Advantage of Our Splendid Offer of Wilson Rotary Electric Sewing Machines Upon Payment of \$1 Down

—and the arrangement of equally convenient terms.
—THE WILSON has a time-tested motor—is light, compact and easily carried about—
Ready to Use at the Turn of a Light Switch
—So simple to operate—in fact, the WILSON does ALL THE WORK—the sewer merely guiding the work under the needle. Can you imagine a simpler and more fascinating way of reducing the pile of spring sewing?
—Seventh Floor, Lipman, Wolfe & Co.



Boys' Wash Suits

Special Sale Price \$1.59

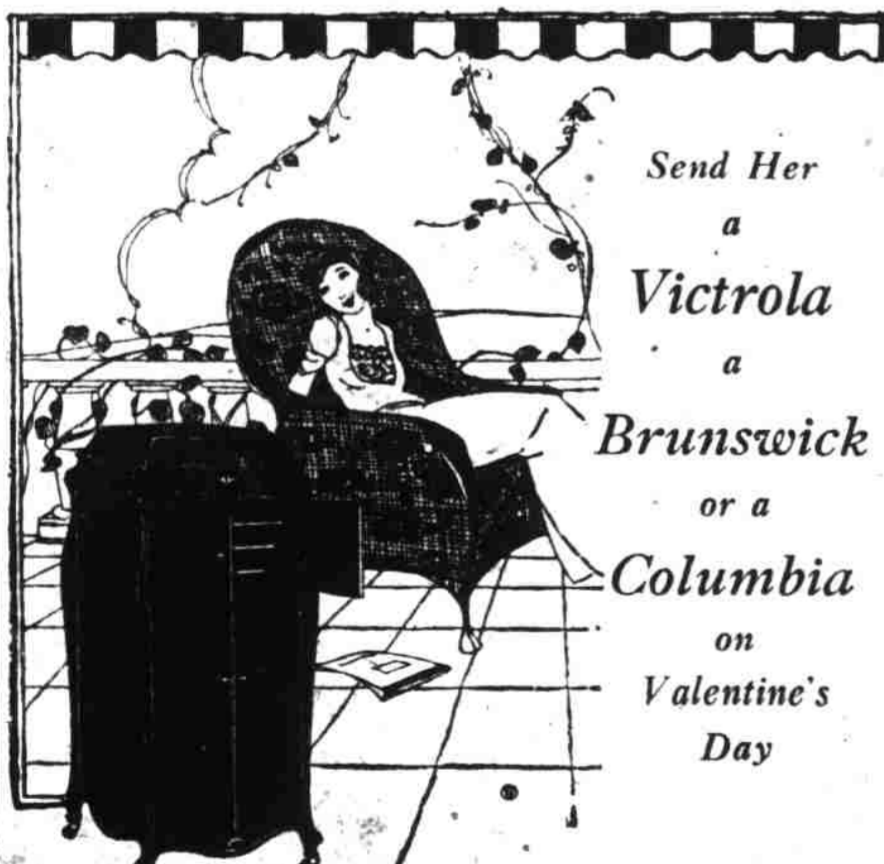
—A group of sample suits from one of the foremost manufacturers in America; also broken lines and sizes from our regular stocks of high grade suits—all included at this exceptionally low price.
—Clever Oliver, Billy Boy, Junior, Norfolk and modified Russian styles. All new colorings—plain shades, stripes, checks and attractive combinations.
—Fifth Floor, Lipman, Wolfe & Co.

5-Piece Aluminum Combination Cooking Set \$2.35

—Consisting of one 5-qt. kettle, one 3-qt. double boiler inset, one 3-qt. steamer inset, one cover and one cake pan tube.
—Made of extra heavy aluminum—may be used for any number of culinary purposes.
—Household Efficiency Section, Eighth Floor.



Buy Your Talking Machine From The Wiley B. Allen Co.



Send Her a Victrola a Brunswick or a Columbia on Valentine's Day

Our Special Combination Offers (Including \$10 Worth of Records of Your Own Choice) Priced from \$35 to \$435

With the many styles of the leading makes displayed on our floors, side by side, for your convenient comparison, it simply remains for you to call and select the instrument best adapted to your home and pocketbook.

Pay only a small payment down, and the balance in twelve monthly payments.

Simply sign and mail this Ad for full information.

Name

Address

No matter where you live we will deliver it with all charges paid.

MORRISON ST. AT BROADWAY
The Wiley B. Allen Co.
MASON AND HAMILIN PIANOS
OTHER STORES: SAN FRANCISCO, OAKLAND, FRESNO, SAN DIEGO, SAN JOSE, SACRAMENTO, LOS ANGELES