

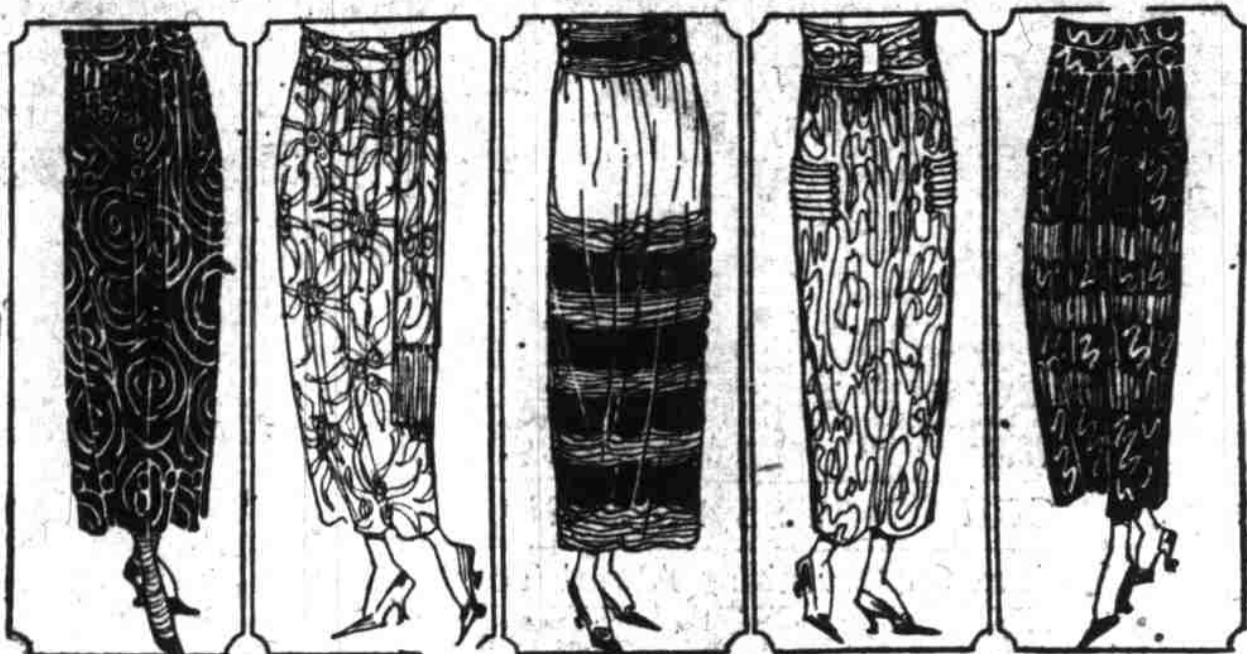
WE RESERVE THE RIGHT TO LIMIT QUANTITIES IN THE JANUARY ECONOMY SALES

**Lipman Wolfe & Co**  
"Merchandise of Merit Only"

# JANUARY ECONOMIES

**Lipman Wolfe & Co**  
"Merchandise of Merit Only"

Figuratively speaking, this store is a direct representative of the Department of Justice at Washington, which branch of the government has been delegated with the task of bringing living costs down. Our January economies represent merchandise priced at LESS than today's wholesale quotations, bringing big saving opportunities for YOU.



SKETCHED IN THE LIPMAN-WOLFE STUDIOS

## Drastic Reduction Sale of Skirts

Rare Silk Skirts—Also rich plaids. Bringing our entire stock of higher priced skirts to the amazingly low price of

**\$15.95**

Styles and fabrics that will be the vogue for Spring

Skirts for every occasion. Greatly reduced

—At a price that does not cover the cost of material, in many cases, we are offering the choice of our entire stock of fine skirts for afternoon, sport, dress and evening wear in a very remarkable underprice sale, beginning tomorrow.

—The materials include:

Brocaded Georgettes · Moire (uncut fringe trimmed) · Velvetten  
Kumai Kumai · Satin Amour · Dew Kist · Wool Plaids

—Early fashion notes predict great popularity for wool plaids, and it is hardly necessary for us to predict the vogue for skirts of such delightful silks as Kumai Kumai, Dew Kist and the other silks from which the skirts in this sale are made.

—COME EARLY.

—Third Floor, Lipman, Wolfe & Co.



SKETCHED FROM GARMENTS IN THE SALE

## A Real Sale of House Dresses

The Like of Which Has Not Been Seen for Many Months

—In this sale we are quoting prices so extremely low as to at once suggest to every woman the wisdom of supplying her needs now.

**House Dress Aprons Very Special \$1.59**

—Percale and gingham frock-apron plaids of refreshingly dainty colors.

—Fashioned on straight, loose lines with a belt effect. Short kimono sleeves and fancy collars.

—Another model is the quaint surplice style with three-quarter length sleeve, large pockets and collar and cuffs finished with white binding. This one in plain pink or blue.

**A Group of House Frocks At \$4.95—Special!**

—Quite smart enough for soon-to-be-needed porch dresses. Made of gingham, percales, chambrays and the so-called English prints, and trimmed with white pique collars and cuffs, these dresses are as effective as one could wish. And so low priced!

—Fourth Floor, Lipman, Wolfe & Co.

**300 House Dresses Exceptionally Priced at \$2.65**

Sizes 36 to 44.

—Smart waistline house frocks of gingham and percale—both plain and in stripes and checks.

—Also the universally popular Billie Burke models in pretty plaid or striped gingham.

—Surplice frocks, too, in plain pink or cadet blue, contrastingly trimmed.

—House dress aprons, too, included in this special priced lot—of fine percales with chambray trimmings. Wide belts, pockets and fancy tabs.

**House Frocks—Special \$3.95**

—Chambrays, gingham and percales fashion these charming utility frocks that are so prettily trimmed with finely tucked organdy, tique or plaid. Gored skirts, two styles in sleeves. Fancy collars.

—Fourth Floor, Lipman, Wolfe & Co.

## \$40,000 Stock of Hosiery—Unprecedented Saving

—At from 10 to 25 per cent below present wholesale costs, we are retailing this wonderful stock of hosiery. It's a mammoth event with savings not to be duplicated—so we urge you to

SUPPLY YOUR HOSIERY NEEDS FOR THE ENTIRE YEAR!

**New for Spring Wear**  
**Pure Thread Silk Drop Stitch \$1.25**

—With lisle tops, soles, heels and toes. Black and colors. Perfect quality, every one. Very special.

**First Quality Fiber Silk 79c**

—Lisle tops, heels and toes; heavy quality. Best colors. A special.

**Pure Thread Black Silk \$1.65**

—Lisle garter tops, reinforced toes, soles and heels. Semi-fashioned. First quality, heavy weight.

**Pure Thread Silk 85c**

—With reinforcements of sturdy lisle. Irregulars. Black and colors. Very special.

**New for Spring**  
**Fancy Lace Silk Stockings 95c**

—Irregulars. Black only. Lisle reinforcements. An exceptional value.

**Famed Notaseam Hose (Sub-standards) \$1.15**

—Lisle garter tops, reinforced toes, soles and heels; semi-fashioned. Black, white and colors. Very special.

**Fleece Lined Cotton 39c**  
—Double garter tops, full fashioned. White and black. Firsts.

**Pure Thread Silk \$1.00**  
—Lisle tops, novelty and plain colors. Both "first" and "second" qualities.

**First Quality Fiber 59c**  
—Lisle reinforcements. Excellently wearing stockings of fiber silk.

—Street Floor, Lipman, Wolfe & Co.

## The J. C. English Stock of Lamps

A Great Purchase and Sale

—The entire stock of lamps from one of the best-known lamp departments in Portland—known for quality, known for artistry, known for value—this magnificent collection has been sold to us at closing out prices and is being sold by us on the same basis.

**Savings in Many Instances Over 50 Per Cent**

—Here is an opportunity created by most unusual conditions—an event that cannot be repeated under any circumstances. Save Tuesday on a handsome lamp for the living room, a dainty one for the boudoir or a magnificent ornamental lamp for the parlor.

**Our Entire Stock of Beautiful Lamps and Shades Reduced 10% to 50%**

—This in addition to the unprecedented savings on the J. C. English lamps, making this a sale of unrivaled importance.

(Seventh Floor), or better still, permit



## Reduced Prices Bring January Economies

On SPECIAL SALE beginning tomorrow morning at 9:15 o'clock. The World-Famed Brand

## Men's Globe Underwear

—This superior make requires no introduction to Portland men. Globe Underwear is TAILORED, the finest steam-shrunk yarns assures the retention of the natural softness and practically eliminates the possibility of shrinking. —The savings are big. We urge you to supply future—as well as present requirements.

**Medium Weight Cotton Union Suits \$1.95**  
—Good warm suits, yet not too heavy. White and ecru.

**Heavy Weight Cotton Union Suits \$2.45**  
—Heavy, soft, warm suits. Made of best cotton yarns. Ecru.

**Heavy Weight Wool and Cotton Union Suits \$3.95**  
—Heavy suits for the outdoor man. Natural gray.

**Medium Weight Wool Mixed Union Suits \$3.25**  
—Wool-mixed union suits—natural gray. Excellent garments.

**Worsted Union Suits \$4.95**  
—Medium heavy weight, white. Long and short sleeves.

**Extra Heavy Suits \$5.95**  
—Extra heavy, gray worsted and cotton-mixed suits.

—Men's Shop, Just Inside Washington Street Entrance.



Four More Days and Then This Epoch-Making Sale of

## CLOTHING

Comes to An End

We frankly state that this offer of

**Our \$100,000 Stock of Men's Suits and Overcoats at 20% Discount**

has met with response unprecedented—yes, far, far beyond our expectations. While it would be difficult for us to serve more men than are present daily, we nevertheless consider it our duty to remind you that

**Only Four Days Remain**

And then the great opportunity will have been a thing of the past—and the greatest sale of men's clothing that the Pacific Coast has known will have passed into history.

**Stein-Bloch Fashion Park**  
**Langham Langham-High**

—Yes, those are the makes—best in the world. —Many men are buying both a suit and overcoat. We urge you to move quickly.

—Fifth Floor, Lipman, Wolfe & Co.



## Eden Electric Washing and Wringing Machines



wash everything mechanically in a few moments exactly the way a woman washes her finest things—dipping clothes up and down a countless number of times in rich, foamy suds—dissolving grease—releasing dirt—saving time and wear.

See demonstration in the Electric House (Seventh Floor), or better still, permit us to

Place One in Your Home on Free Trial

If you decide to buy, you may

Take Advantage of Very Liberal Terms

## The Great Rug Sale! Every Rug Reduced!

(Excepting Klearflax Linen Rugs)

—The enormity of this sale can scarcely be overestimated—coming, as it does, at a time when rug dealers are threatened with even higher prices. To fly in the face of such adverse market conditions seems rank folly—yet the great campaign TO BRING PRICES DOWN entails just such radical measures. And we are willing and glad to take extreme measures to cooperate with the government in an effort to again bring about normal trade conditions. REMEMBER, WITH THE EXCEPTION NOTED ABOVE, EVERY RUG IN OUR ENTIRE STOCK DRASTICALLY REDUCED!

**Axminster Rugs Attractively Priced**

—Small all-over patterns on the order of the Oriental and conventional designs.

**Sizes 8.3x10.6 to 9x12 Priced from \$37.45 to \$38.45**

**Cocoa Door Mats Reduced in Price**

Extra quality—firmly woven.  
16x27 ..... \$1.37  
18x30 ..... \$1.89  
20x30 ..... \$1.98

This rug sale is of compelling interest to home-makers, hotel and rooming house keepers and business men!

—Fifth Floor, Lipman, Wolfe & Co.

**Extraordinary Savings On All Our Fine Wilton Rugs**

—In a variety of sizes, and qualities ranging from the "very good" to the "superlatively good." Including handsome rugs of deep, luxurious pile and marvelously beautiful colorings and designs.

Size 36x63.....\$14.95    Size 6x9.....\$44.50    Size 8.3x10.6.....\$117.50  
Size 36x63.....\$18.75    Size 6x9.....\$65.00    Size 9x12.....\$122.50  
Size 36x63.....\$19.65    Size 8.3x10.6.....\$84.50    Size 9x12.....\$124.50  
Size 4.6x7.6.....\$27.45    Size 8.3x10.6.....\$95.50    Size 9x12.....\$137.50

—Every Wilton in the lot is NEW, HANDSOME—and DRASTICALLY REDUCED!

**WOOL AND FIBER ART RUGS**

—Neat, all-over designs in these firmly woven art rugs. Blue, tan and rose.

**FIBER RUGS \$13.45 to \$15.95**    **WOOL FIBER RUGS \$14.95 to \$16.45**

Sizes 7.6x9 to 9x12 in both the wool and fiber.

**Colonial Rag Rugs**

—Hit-and-miss patterns. —Sizes 24x36 to 27x54, 73c to \$1.29.

**Inlaid Linoleum**

**Special \$1.79 Square Yard**  
—Good quality inlaid linoleum in tile and inlaid patterns. A wonderfully special price.

**Printed Linoleum**

**Special 85c Square Yard**

**Felt-Base Floor Covering**

**Special 65c Square Yard**