

# STATE COMMISSION DEFERS ITS DECISION UPON BRIDGE BIDS

### Lowest Bids on Youngs Bay Viaduct Greatly in Excess of Estimates; Clatsop Is Satisfied.

Because the lowest bid on the construction of the bridge across Youngs bay in Clatsop county was greatly in excess of the estimate, the state highway commission Saturday took under advisement the question of awarding the contract.

The bridge, which is the largest structure yet planned by the commission, is of the bascule type with a clear span of 150 feet. Including approaches, it is to be 1800 feet in length. Bids were received on two types, one in which the approaches are altogether timber and the other in which they are a combination of timber and concrete.

The lowest bid was submitted by the Gilpin Construction company of Astoria, which on the cheaper construction bid \$211,282. The engineer's estimate was \$234,420. On the heavier construction the bid was \$373,282, compared with \$309,823, the estimate of the engineer.

The bridge is to be built by the county, state and federal government in cooperation, the county paying one-third and the remaining two-thirds to be shared by the state and federal government.

In view of the county participation, Commissioner Booth, who was presiding in the absence of Chairman Benson, asked for an expression of the views of the county relative to letting the contract.

G. C. Fulton advised that the contract be awarded on the bid submitted, on the ground that the structure was badly needed and because he was satisfied as favorable bid could not be obtained later. Labor and material costs are increasing, he said, and he saw no prospect for better bids.

With the statement from Commissioner Booth that the commission would like to get the opinion of Chairman Benson and C. H. Purcell, district engineer of the bureau of public roads, before deciding, the matter went over until December 29, when the commission will hold a special meeting at Salem.

An issue of state 4% percent road bonds was sold to a syndicate composed of the First National bank of New York, Keene & Taylor and the Anglo-Paris bank of San Francisco on a bid of \$886,170. This was \$10,000 in excess of the next highest bid and \$20,000 above the lowest bid.

The price obtained was slightly lower than the amount received in November for a similar issue, which was \$988,230.

An unusual development was the offer from Union county to lend the commission \$110,000 with which to match the federal government for grading of the La Grande-Minam road. The offer was made in view of the fact that it was the understanding that the state commission did not have the funds available and that the county wanted to put on a paved surface, provision for which had been made in the county bond issue. The offer was taken under advisement.

Umatilla county asked for a survey of the road from Nye to the Grant county line outside the national forest. The commission agreed with a joint delegation from Washington and Yamhill counties to defer action on the contract for graveling the road between Forest Grove and Gaston until next summer, when it is to be paved.

All bids for graveling the Cabylon section of the Baker-Cornucopia road in Baker county were rejected, and the project ordered readvertised. The bids were considered too high.

Bids were opened for two bridges in Yamhill county and referred to the county court and state highway engineer.

On the bridge across the Yamhill river between Newberg and McMinnville the

lowest bid was that of Steinger Bros. \$46,512.

On the structure across Cheliam creek the lowest bidder was E. D. Oida, \$8912. The cost of the bridges is to be borne by the county.

Union county presented a request for marked road surveys as did Crook county. In addition the last named county offered \$40,000 for cooperation on the post road between Prineville and the Ochoco forest, and \$80,000 on the extension of the Crooked river road to Paulina.

It has been decided by the commission that it will make no recommendations to the coming legislature in the way of road legislation. A review of the work already done and a forecast of what is necessary to complete the system of state roads as now marked out will be made and submitted to the members, who will be left to their own initiative.

## Good Health More Than Skin Deep

### To Look Well and Be Attractive, Men and Women Must Really Be Well and Feel Well

### Good Health Is Happiness

### Poor Health Often Traced to Thin, Watery Blood—Pepto-Mangan Enriches the Blood

Good blood is the source of good health. Men and women with thin, watery blood deficient in red cells, cannot conceal the fact that they are not well. The eyes lose their sparkle, the face becomes haggard and drawn, the step loses its elasticity, the whole system seems to "stump"—and they feel miserable most of the time.

Each year thousands of men, women and children with run-down, worn-out bodies, anemia or any form of illness caused by poor blood, find that a few weeks of Pepto-Mangan restores them to the full-blooded, vigorous, energetic class and that they become infinitely more attractive and happy.

Pepto-Mangan is put up in both liquid and tablet form—both contain the same medicinal strength and value. The goodness and safety of Pepto-Mangan is so well known that no one with a run-down system need hesitate in taking it.

When you ask the druggist for Pepto-Mangan be sure to ask for "Gude's." Be sure the name "Gude's" is on the package. Without the name "Gude's" it is not Pepto-Mangan.—Adv.

The price obtained was slightly lower than the amount received in November for a similar issue, which was \$988,230.

An unusual development was the offer from Union county to lend the commission \$110,000 with which to match the federal government for grading of the La Grande-Minam road. The offer was made in view of the fact that it was the understanding that the state commission did not have the funds available and that the county wanted to put on a paved surface, provision for which had been made in the county bond issue. The offer was taken under advisement.

## EYE STRAIN IS RESPONSIBLE FOR MANY ILLS

Save your eyes by using correctly fitted glasses. Refracting carefully and scientifically done.

Latest Instruments

### R. M. HOOD

Consulting Optometrist.  
415 Failing Building  
Fourth Floor Main 2828

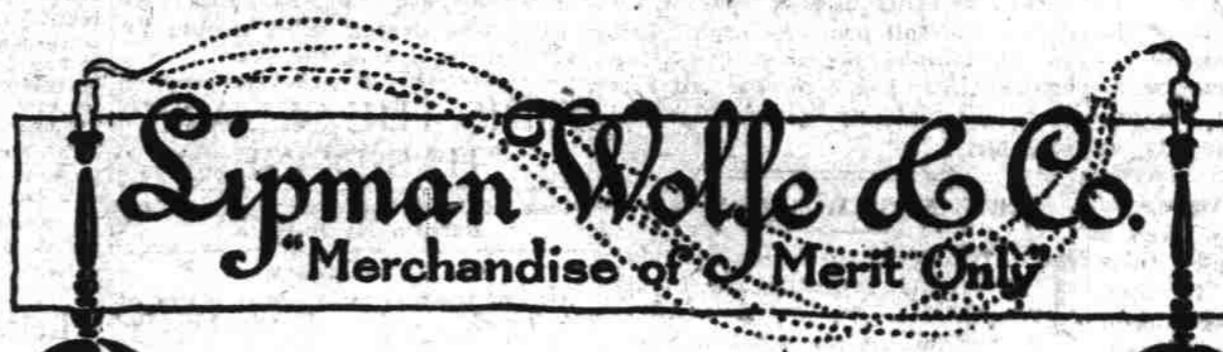
On the bridge across the Yamhill river between Newberg and McMinnville the

## TIP TOP INN BAKERY FOR CHRISTMAS PASTRIES—EIGHTH FLOOR

### Candies—Upstairs Important to Order at Once!

—For our delicious confections are in great demand. —Truffles, Effermays, Dauphins, Dipped Pineapple, Orangeine Cups—etc., etc.

**\$1.50 the Pound**  
—Sweets Booth, Street Floor.



# Christmas Announcement

WITH but two days more to complete your Christmas shopping, systematic effort on your part will greatly lessen the inconvenience incidental to the hustle and bustle at this time. We urge you, as a matter of expediency, and for your own convenience, to do all your Christmas shopping in this store. We are prepared to supply your every Christmas requirement; when occasion demands, we draw on our reserves in order that you may be assured of complete stocks up to the very last moment, in such sections as:

- JEWELRY STATIONERY UMBRELLAS TOILET ARTICLES RIBBONS
- ELECTRIC GOODS ART NEEDLEWORK NOVELTIES HOSIERY
- CHINAWARE ART WARES PICTURES GLOVES SILVERWARE

and in any number of other departments that are of such importance to the Christmas shopper. —Our stocks of all of the above are generous to overflowing.

Please Shop in the Morning, if Possible

Without Reservation or Restriction We Announce

## A Sale of Our Entire Stock of Fine Furs At 1/2 Price

AND this in the face of higher prices than ever assured for next year! Hardly believable—and, remember, these are all Furs of Lipman, Wolfe & Co. standard—not one exception!

Splendid Selection in Capes, Coatees, Fancy Neckpieces, Scarfs, Throws

No C. O. D.'s, No Lay-Aways—Every Sale Final —Third Floor, Lipman, Wolfe & Co.



## The Electric House

COME in and see how quickly, easily and efficiently clothes are washed and ironed with Electric Washing Machines and Electric Irons—how like play it is to cook breakfast at the table with electric appliances—Grill, Toaster, Waffle Iron and Percolator—for the noon-day and evening meals the MODERN TWENTIETH CENTURY HOUSEWIFE uses, of course, an electric range, that automatically turns itself off at the proper time. See how cheery an electric fireplace is and how easily this entire house—THE ELECTRIC HOUSE—can be cleaned with a Hoover Sweeper.

- The famed EDEN and MAYTAG Electric Washing Machines,
- The Walker Electric Dish Washer,
- The Hoover Sweeper, are all

Sold on Terms to Suit!

- The Electric House, Seventh Floor, Lipman, Wolfe & Co.
- Universal Grills \$11.50 and \$12
- Universal Percolators \$11.50 to \$37.50
- Waffle Irons (Universal), \$16.50
- Warming Pads (Universal), \$10
- Majestic Heaters (Two Styles), \$11
- Hot Point Electric Irons, \$6.75
- The Electric House, Seventh Floor, Lipman, Wolfe & Co.

# Toys

OUR STOCKS of Toys are seemingly without end. Kids demand to be taken to Lipman-Wolfe's Toy Departments—for, as Johnnie tells Mary:—"There ain't no store in Portland what's got anything on Lipman-Wolfe's when it comes to toys!"



- Dolls! Dolls! Dolls!
- We're Headquarters for the Doll Family!
- Madame Hendren Life Like Baby Dolls, \$1.25 to \$10.
- Bisque Baby Dolls, 25c to \$8.
- Horsman Art Dolls, \$1 to \$15.
- Beautiful Colonial Dolls.
- Celluloid Dolls.
- Kewpie Dolls.
- Baby Vamps, \$1.

## Wheel Toys

—Automobiles, Fire Apparatus, Wagons, Trains, etc.: 98c up to \$25.

And Worlds of Other Toys! —Toy Sections, Eighth Floor and Basement.

## A Sale! Original Oil Paintings Half Priced

WE ARE offering this PEERLESS SALE OF ORIGINAL OILS at HALF PRICE a few days before Christmas to you who desire to give something really worth while—something in the nature of a compliment subtly expressed, such as fine paintings—so that you may have the opportunity to buy and

Save as Much as You Spend

—These Paintings are the works of masters of note—including many American artists.

Landscapes Waterscapes

And Others, Tuesday, \$25.00 to \$150.00

All Framed in Frames of Massive Dignity

—Picture Galleries, Sixth Floor.

# NOTICE

Notwithstanding Manufacturer's Prices Increase on January 1st, You Can Buy

Mendel-Drucker Wardrobe Trunks

At Greatly Less Than Present Regular Prices in This Sale Event

You Have Three Wonderful Groups to Select From as Follows:

\$47 \$55 \$80

—At each price, there are several different styles to choose from, and the fact that Mendel-Drucker are a strictly quality product and absolutely dust-proof, calls for immediate consideration on your part. —Fifth Floor, Lipman, Wolfe & Co.

### A Glove Bond

—Gives the recipient wide choice of styles, colors and sizes and a personal fitting.

### A Gift Bond

—For any amount means that you wish to present whatever the recipient may most desire in "merchandise of merit only."

Had These Occurred to You as Appropriate

## GIFTS

For Dad

- Auto Robes, \$10 to \$25.
- Bath Robes, \$5 to \$75.
- Majestic Electric Heaters, \$11.
- Electric Fire Place, \$30.
- Klearflax Rug (for his office).
- Desk Lamp.
- Mendel Wardrobe Trunk.
- Mahogany Humidor.
- Silk Shirts, \$6.85 to \$20.
- Reefers, \$5 to \$17.50.
- Gloves, \$3.50, \$4, \$5, \$6, \$6.50 to \$35.
- Ties, 50c to \$5.
- Silk Pajamas, \$12 to \$30.
- Socks, \$1 to \$3.
- Umbrellas, \$2.50 to \$25.
- Jewelry (Cuff Links, Tie Pin, Etc.)

Gift or Glove Bond

For Mother

- Blouses, \$10 to \$25.
- Fire Place Accessories.
- Mahogany Tea Wagon.
- Umbrellas, \$5.65 to \$35.
- Beautiful Furs.
- Original Oil Paintings (now half price).
- Overstuffed Furniture.
- Silk Petticoats.
- Deagan Military Dinner Chimes, \$7.50, \$12.50.
- Pyrex Transparent Ovenware Gift Sets, \$7.50, \$11, \$14.
- Floor Lamp, Special \$25.
- Electric Dish Washer on terms.
- Electric Washing Machines on terms.
- Miller-Clozman Traveling Bags.
- Electric Sweeper on terms.

Gift or Glove Bond

Brother and Sister

- Flash Light.
- Rug for his room.
- Boys' Practice Telegraph Sets.
- Silk Sox, \$1 to \$3.
- Carrom Game Boards, \$2.95 to \$8.
- Ouija Boards, 98c to \$1.50.
- Silk Shirts, Ties, Bath Robes.
- Leather Bags, \$5 to \$30.
- Beaded Bag, \$18 to \$125.
- Vanity Bag, \$4.50 to \$15.
- Velvet Bag, \$4.50 to \$15.
- Pearl Beads up to \$50.
- Rookwood Pottery.
- Japanese Lacquer Bird-Cage on high base, \$23.50.
- Wool Stockings, \$3 up.

Gift or Glove Bond

## Economy Basement Store

### Candy Lb. 25c to 60c Important to Order Now!

—Delicious Christmas Candies—fresh from the makers.

Special Prices by the Pound

—Kindergarten Mixed 50c Tart Mixed 60c. Gimbel's Gum Drops 45c. Peppermint Lozenges 25c.

By the Box, Choice Assorted Chocolates 75c —Basement.

### Boxed Perfumes 25c to \$1.25

—A large assortment of good perfumes in attractive boxes for gifts.

—ECONOMY BASEMENT.

Artificial Pearl Beads 95c

—Opera length—graduated sizes. —ECONOMY BASEMENT.

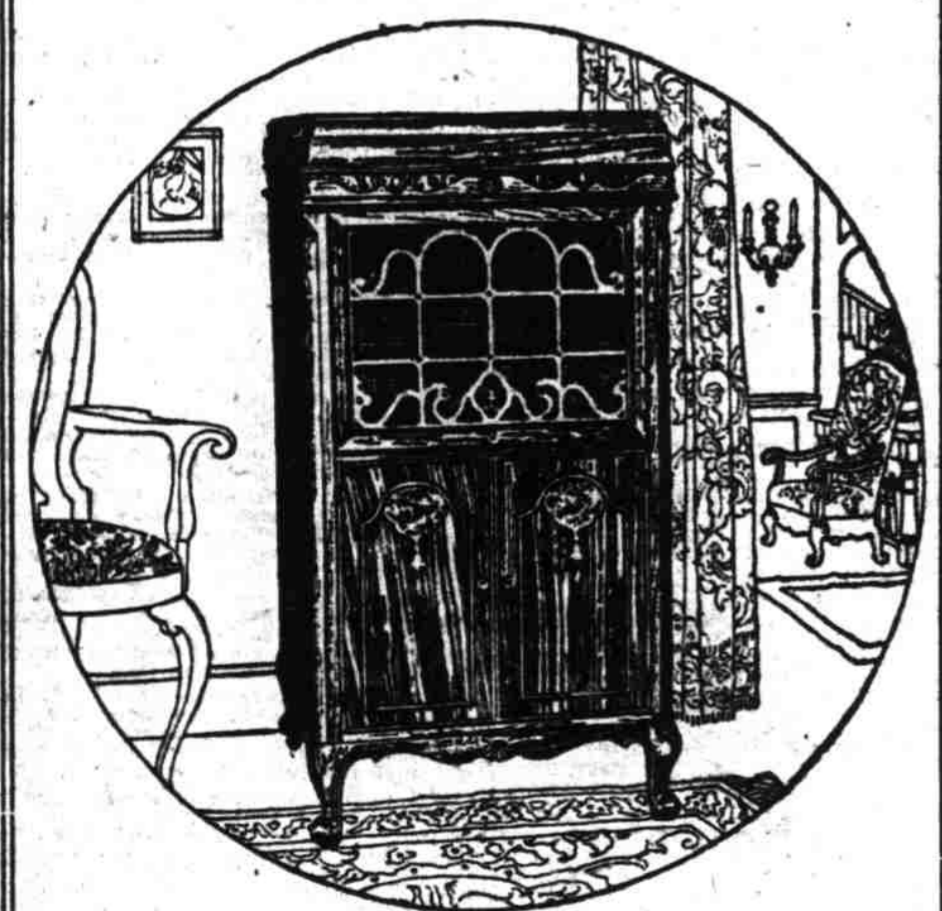
### Handkerchiefs in Gift Boxes For Children Box 10c to 23c

—Cunning little "hankies" in gay boxes, 2 for 19c. —Two gay "kerchiefs" in a gift box, 10c. —Boxes of sheer lawn "kerchiefs"—three in a box—15c and 23c box.

For Women, Box 40c to 75c

—Unusual values in fine "kerchiefs"—boxed for gifts. 3 for 40c 3 for 50c 3 for 45c 3 for 65c 3 for 75c

—ECONOMY BASEMENT.



THE INCOMPARABLE

# CHENEY

The Cheney Phonograph Plays All Records

Cheney tonal beauty is like that of the woodland songsters. The wonderful performance of the Cheney is due to its newly-applied principles of construction. When you listen to the Cheney you forget the machine and think of the living presence of the artist, pouring out his soul in a flood of melody. All the wealth of personality that distinguishes substance from shadow radiates from the record.

Visit our store—hear the Cheney—"Its tone is Satisfying"

Made in six beautiful models.

Prices From \$90 to \$365

STORE OPEN THIS EVENING

## G. F. JOHNSON PIANO CO.

140 SIXTH, BETWEEN ALDER AND MORRISON  
Chickering—Mehlis—Fackard—Lindeman Pianos—Violas—Guitars

THIS STORE USES NO COMPARATIVE PRICES—THEY ARE MISLEADING AND OFTEN UNTRUE