

Christmas Evening Gowns

by Lady Duff Gordon

LADY DUFF-GORDON, the famous "Lucile" of London, and foremost creator of fashions in the world, writes each week the fashion article for this newspaper, presenting all that is newest and best in styles for well-dressed women.

Lady Duff-Gordon's Paris establishment brings her into close touch with that centre of fashion.

Lady Duff-Gordon's American establishments are at Nos. 37 and 39 West Fifty-seventh street, New York, and No. 1400 Lake Shore Drive, Chicago.



By Lady Duff-Gordon ("LUCILE")

CHRISTMAS gowns strike the note of festivity. It is difficult to contemplate the possibility of a sombre Yuletide gown. If happiness is in the heart it should come to the surface on the great Natal day. Gowns express the state of mind and reflect the mood. Therefore for Christmas the gown for rejoicing!

The group of three holiday robes printed on this page shows a variety of attire. Yet the frocks have the common note of rejoicing. There is not a low-spirited dress among them.

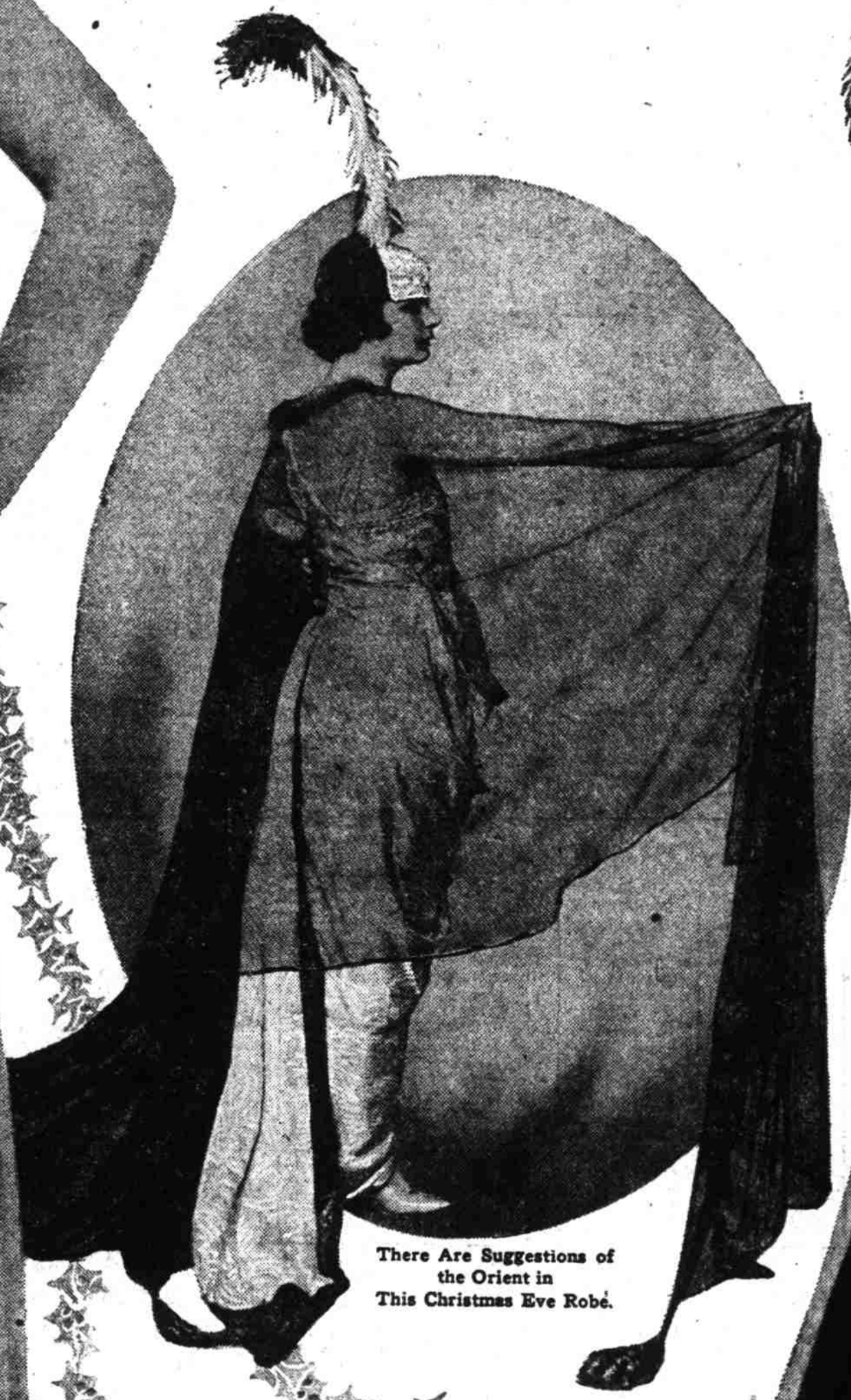
The first, worn by the large, left-hand figure, is essentially a gala gown. It seems to be made for dancing, for high-hearted rout. It comprises a high bod-

ice, a harem skirt and long, straight drapery from shoulders. The bodice is of satin in wide, crush folds. The skirt is of ribbon and chiffon in alternate stripes. Depending from the shoulders are bands of satin widening at the skirt

A Yuletide Gown Composed of a Satin Bodice, a Chiffon and Ribbon Harem Skirt and Side Draperies of Satin.

to broad panels. Appliqued upon the drapery and forming a graceful curve at the décolletage of the bodice are beaded rosettes.

The small middle figure presents for your consideration heavy brocade, gracefully draped, and fastened across one shoulder. The bodice is very low on the other side and finished by jeweled banding. The detached portion of the brocade at front and the train, hanging from the belt, is faced with heavy satin of a contrasting color. Over the robe, furnishing a note of mystery and Orient-



There Are Suggestions of the Orient in This Christmas Eve Robe.

alism, is a wide scarf of jeweled net. At each corner of the scarf is a heavy jeweled tassel.

The third figure is one built upon a basis of soft satin. The satin is fashioned into a draped skirt, short at front and extending to a narrow pointed train at back. Over this is gracefully draped an epochal gown I recall that was ordered by a lovely young woman. Although the Autumnal age was far from her, her taste inclined to Autumnal colors. She asked for a dancing frock that should resemble as nearly as possible the shades of a forest in Autumn.

blue belong to the second. Brown does not belong to either. It is a rather heavy, uncompromising color. Its beauty is better shown in combination with complementary colors. For instance, brown for evening, as for day, wear is most effective when combined with a shade of yellow.

Brown was most happily utilized in an epochal gown I recall that was ordered by a lovely young woman. Although the Autumnal age was far from her, her taste inclined to Autumnal colors. She asked for a dancing frock that should resemble as nearly as possible the shades of a forest in Autumn.



A Dinner Gown of Embroidered Tulle Over Satin.

charms into striking relief. Red is of the first class of colors. Black and

The gown when finished did not dim, but rather enhanced, her exotic beauty. Her eyes are dark. Her hair is of the natural gold which nature rarely vouchsafes to poor humans.

For this lithe young woman was designed what might be termed a triple frock. Its foundation was a robe of gold lace. Over this was draped the flimsiest of scarlet chiffon. This double brilliance was subdued by a veiling of dark brown crepe, which was caught up here and there to afford tantalizing glimpses of the flame and sunrise shades beneath.

"Ah! My dream realized!" she exclaimed at seeing it. "I wanted a gown that should remind me of a walk through the woods in mid-October."

Blacks, blues and greens appear often in an evening assemblage. White is occasionally seen. During the mid-season holidays doubtless all fair sharers in festivities will gown themselves in the brightest frocks they own.