

PACIFIC MARINER 25 YEARS, LYONS COAST STRANGER

Captain of Oriental Liner Coaxet, Now in City, Has Been Navigating in the Far East. FORMERLY OIL TANK SKIPPER

During the War Captain Lyons Commanded the Supply Vessels Westport, Newport News...

Although a master mariner of the Pacific coast for 25 years, Captain Howard R. Lyons of the Oriental liner Coaxet, arriving in Portland Saturday, is practically a stranger on the Pacific coast.

When the war came on Captain Lyons was commissioned lieutenant commander in the navy and commanded successively the naval supply vessels Westport and Newport News, crossing the Atlantic from Philadelphia.

Released in June, Captain Lyons left office of Portland in July with the Coaxet. His home is in Brooklyn, N. Y. The Coaxet arrived in Friday afternoon, after beating around in the fog and wind of the coast for several days.

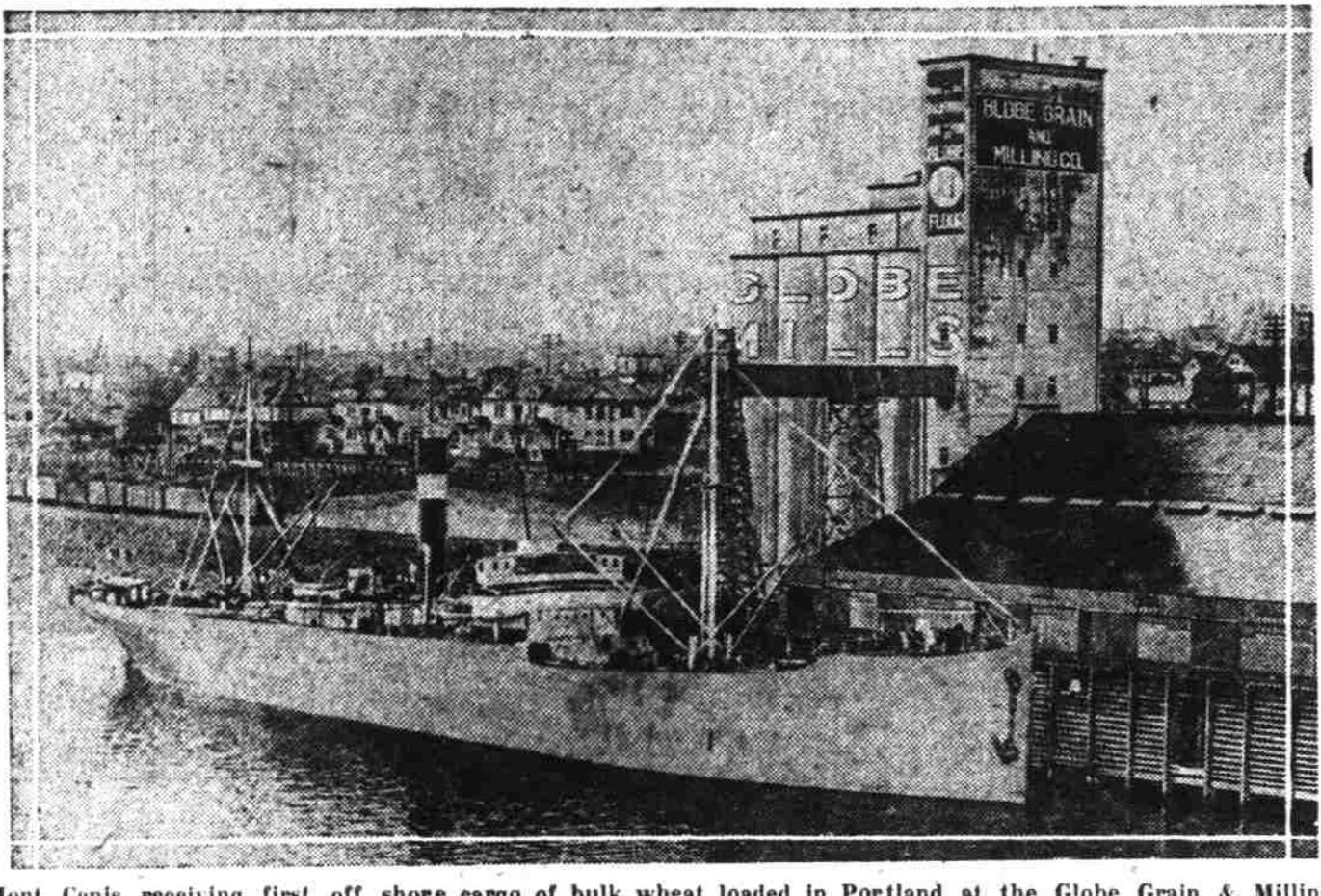
WAWALONA LOADED MONDAY Loading of the Wawalona starts Monday. The vessel is to depart for the fourth time on the Portland-Oregon coastal service.

Shipping Men Resent Criticism of Emergency Fleet Vessels. Commenting upon the federal grand jury charges of inadequate equipment on shipping board steamers built in Portland, men in shipping circles were indignant at insinuations cast that inspection on these vessels during construction, equipment and trials was lax.

Another Inquiry to Start In regard to this, Mr. Pape says that the water pipes are thoroughly flushed and the new steamer is drinking the water is stored. It was reported Saturday that another investigation of this matter will be made at once by the shipping board representatives on all government owned vessels in the harbor.

BOAT MAKES DAYTON DAILY Steamer Metlakona Runs Round Trip for Increasing Business. The volume of business in the Upper Willamette river and its tributaries has become so great that the river steamer Metlakona of the Kelso Transportation company is making a round trip each day between Portland and Dayton, and the Yamhill river.

FRENCH STEAMER LOADING GRAIN



Mont Cenis receiving first off shore cargo of bulk wheat loaded in Portland at the Globe Grain & Milling company dock, below the Broadway bridge. The vessel will take 4100 tons of grain to Marseilles, leaving today.

With 4100 tons of white wheat in her hold, of which all will be in bulk excepting a small quantity sacked to fill odd corners and to keep the bulk stuff steady, the French steamer Mont Cenis which arrived in Portland Wednesday morning, will leave out for Marseilles late today.

When the Port of Portland tug Portland arrived at the head of Astoria bay last night with the barkentine Hesperian, about to sail for South Africa, it was found to be blowing so hard across the harbor that an attempt to enter the harbor was abandoned.

Two Meetings in Clackamas Held to Boost Good Roads Oregon City, Nov. 1.—With a view to boosting for good roads and the encouragement of good settlers, a meeting was held by the residents of the Beacon Heights district, in the Clarks street, Friday night, when a community club was organized with Fred Kamath as president and Luke Duff, secretary and press correspondent.

News of the Port Arrivals Nov. 1. City of America, American steamer, from San Francisco, passengers and general. Oregon, American steamer, from San Francisco, oil. Coast, American steamer, from Hongkong and way ports, general.

Table with columns: Name, Tonnage, Arrived, Departed. Lists various ships and their schedules.

Colonel Tucker's Funeral Will Be Held Here Today Hood River, Nov. 1.—Knights Templar of Hood River accompanied the body of Colonel W. F. Tucker, ranking colonel on the United States army retired list, to the Hood River depot, en route for Portland. Colonel Tucker died Friday as the result of internal hemorrhages, at the age of 65 years.

Marriage is Annulled Oregon City, Nov. 1.—The marriage of Alton H. Johnson and Emma Seymour Johnson was annulled Saturday. Freda Alice Dench received a decree of divorce from Thomas William Dench, and was awarded the custody of a minor child.

ANTWOODEN SHIP PROPAGANDA TRUNS RADICAL ARTICLE

Lawrence Pedrose Writes in Magazine that Northwest Program Has Proven Complete Failure. MR. HAMILTON GIVES ANSWER He Says Pedrose Has Misstated Facts, and Shown Ignorance of Simplest Facts in Shipping.

Vigorous protests are being made throughout the northwestern shipping towns against another outburst of anti-wooden ship propaganda appearing in the October issue of Popular Mechanics magazine. An article published therein, entitled "The Fallacy of Greenwood Shipbuilding," by Lawrence William Pedrose, criticizes and condemns the wooden ship industry in no uncertain terms, but information supplied in it is proven incorrect by the statistical records of the United States Emergency Fleet corporation.

Two Meetings in Clackamas Held to Boost Good Roads Oregon City, Nov. 1.—With a view to boosting for good roads and the encouragement of good settlers, a meeting was held by the residents of the Beacon Heights district, in the Clarks street, Friday night, when a community club was organized with Fred Kamath as president and Luke Duff, secretary and press correspondent.

Standard Oil Stocks Purchased by Overbeck & Cooke Co., Board of Trade Building. Chicago range by United Press.

British May Purchase Big Supply of Eggs Reports from England say the British food controller is believed to be making arrangements for the largest possible importation of eggs into England for the coming winter, but even with this the price of domestic eggs, which now range from 10 to 11 cents apiece, are not expected to be lowered.

Choice Spring Is Only Cash Wheat To Show Strength Chicago, Nov. 1.—Weekly grain review by Louis & Byham, wheat market is quiet and easier this week, with the exception of choice spring grades, which were scarce and firm. Receipts for the week, 645 cars against 805 cars the previous week. 4100 tons of grain to Marseilles, leaving today.

Chicago Range by United Press. Standard Oil Stocks Purchased by Overbeck & Cooke Co., Board of Trade Building.

San Francisco Produce Market. Spokane, Wash., Nov. 1.—All stock records for receipts at the Spokane Union stock yards have gone by the board last month, according to W. H. Moore, president, reports 890 cars for 28 days. This represents inland Empire livestock worth \$1,622,000.

San Francisco Produce Market. Spokane, Wash., Nov. 1.—All stock records for receipts at the Spokane Union stock yards have gone by the board last month, according to W. H. Moore, president, reports 890 cars for 28 days. This represents inland Empire livestock worth \$1,622,000.

STOCKS CLOSE WITH WEAK TONE, SOME SPECIALTIES HIGHER

Stock Market. Stocks closed with a weak tone, some specialties higher. Sloss-Sheffield Advances 11 Points to 88 at the Closing—Industrial Alcohol is Also Higher—Motors Slow Down With Some Lowered.

New York, Nov. 1.—(U. S.)—The stock market closed weak today. Sloss-Sheffield advanced 11 1/2 points to 88. Industrial Alcohol rose nearly 6 points to its closing of 11 1/2. Midvale Steel also showed strength and rose to 55 1/2. Steel common, after advancing to over 110, fell to 103. Pears Arrow dropped 2 1/2 to 87 1/2. Studebaker was off 1/4 at the close of 138 1/2. Republic Steel sold off 5 points from the high to a closing of 140. United States 104 1/2, finally 104 1/2. Lackawanna 104 1/2, General Motors 79, Southern Pacific 10 1/2 and U. S. Rubber 13 1/2.

Choice Spring Is Only Cash Wheat To Show Strength Chicago, Nov. 1.—Weekly grain review by Louis & Byham, wheat market is quiet and easier this week, with the exception of choice spring grades, which were scarce and firm.

British May Purchase Big Supply of Eggs Reports from England say the British food controller is believed to be making arrangements for the largest possible importation of eggs into England for the coming winter, but even with this the price of domestic eggs, which now range from 10 to 11 cents apiece, are not expected to be lowered.

Choice Spring Is Only Cash Wheat To Show Strength Chicago, Nov. 1.—Weekly grain review by Louis & Byham, wheat market is quiet and easier this week, with the exception of choice spring grades, which were scarce and firm.

Chicago Range by United Press. Standard Oil Stocks Purchased by Overbeck & Cooke Co., Board of Trade Building.

San Francisco Produce Market. Spokane, Wash., Nov. 1.—All stock records for receipts at the Spokane Union stock yards have gone by the board last month, according to W. H. Moore, president, reports 890 cars for 28 days. This represents inland Empire livestock worth \$1,622,000.

San Francisco Produce Market. Spokane, Wash., Nov. 1.—All stock records for receipts at the Spokane Union stock yards have gone by the board last month, according to W. H. Moore, president, reports 890 cars for 28 days. This represents inland Empire livestock worth \$1,622,000.

San Francisco Produce Market. Spokane, Wash., Nov. 1.—All stock records for receipts at the Spokane Union stock yards have gone by the board last month, according to W. H. Moore, president, reports 890 cars for 28 days. This represents inland Empire livestock worth \$1,622,000.

STOCK MARKET TOPICS

Financing will release large amounts of funds that had been held for that purpose. There appears to be little stock in supply even on advance.

Investors in general feel that the present buying of steel must indicate confidence on the part of insiders. It is known that the buying is being done through banking institutions identified with the management.

Associated Oil stock has been under accumulation for some time past, according to specialist sources. Interests identified with Southern Pacific company credited with adding to holdings of this stock in the open market.

AMERICAN LIVESTOCK PRICES Chicago Hogs \$14.00. Chicago, Nov. 1.—(U. S.)—Hogs—Receipts, 7000. 25¢ above last week, \$13.85 @ 14.45; medium weight, \$14.00 @ 14.60; light weight, \$14.10 @ 14.70; light hogs, \$13.75 @ 14.00; present activity of business in many quarters.

Table with columns: Name, Price, Change. Lists various livestock prices.

PACIFIC COAST BANK STATEMENT. Portland Banks. Clearing: This Week \$1,100,000; Last Week \$1,050,000; Year Ago \$1,000,000.

TRANSPORTATION. S. S. "CITY OF TOPEKA". Sailed from Portland Saturday, Nov. 1, for Honolulu, via San Francisco, connecting with steamers to Los Angeles and California. Reduced Round Trip Winter Excursion Rates to California ports are now in effect.

San Francisco S. S. ROSE CITY Monday, November 3. From Alansworth Dock. Fare includes berth and meals. City Ticket Office, 84 & Washington Phone Main 3508. Freight Office, Alansworth Dock Phone Broadway 568. San Francisco & Portland S. S. Lines.

AUSTRALIA NEW ZEALAND AND SOUTH SEAS. Via Valparaiso and Rarotonga. Mail and Passenger Service. From San Francisco Every 6 Days. UNION CO. OF NEW ZEALAND Agents and Shippers. San Francisco, 200 Market Street.