

CENTRAL OREGON NEEDS 200,000 MORE SETTLERS

Report of Vice President Bramwell of State Chamber of Commerce, Back From Tour.

FIVE COUNTIES PROGRESSING

Cheap Land in Excellent Stock Raising Districts Would Profitably Support Thousands.

Central Oregon is in absolute need of over 200,000 more settlers to develop its lands. Several hundred thousand more citizens could be easily accommodated and there is a great shortage of labor just east of the Cascade mountains. Residents are capitalizing the natural advantages of this district and a prosperous condition prevails throughout.

These and other important facts were brought to the attention of F. S. Bramwell, vice-president of the State Chamber of Commerce, who has just returned from making a survey of conditions in Klamath, Lake, Deschutes, Crook and Wasco counties.

MAKING RAPID STRIDES

"Rapid strides in industrial and agricultural development are being made in Klamath county," says Bramwell, "and anyone would do well to investigate the prevalent prosperous conditions. The lumber industry is bringing a great amount of money into the district. It is stated that this industry alone has a payroll of \$250,000 a month. Agriculture in Klamath county is still in its infancy, in comparison to the development residents hope to make soon. Although there is a large acreage under cultivation, Klamath county people have in mind the needed development of several irrigation projects and contemplate improving approximately 150,000 acres. Klamath is particularly adapted to stock raising and agriculture and capable of supporting 50,000 people more than it has at the present."

MUCH SPLENDID LAND

From Klamath county Bramwell covered the entire territory of Lake county, where he was surprised to find so much splendid land available. "I had been given to understand that on account of extreme climatic conditions in this section," says Bramwell, "that Lake county was fit only for raising stock and that I find this absolutely incorrect. The Lake district has tens of thousands of acres of splendid sage brush land, the equal of which I have seen in no other district in the state. "Water supply at present is inadequate for development of this land, but I was told that the residents of this district contemplate building two large reservoirs sufficient to care for 100,000 acres. Corn, melons, potatoes and fine varieties of vegetables were growing everywhere. Lake county needs 25,000 more people. "Lake county has about 125,000 sheep and 50,000 cattle, with an assessed valuation of approximately \$12,000,000. Land is cheap all through this section and business men will find it well to investigate conditions there."

In Deschutes county business was found in excellent condition by Bramwell who reports a great amount of new land being brought into cultivation and a spirit of thrift prevailing everywhere. From Deschutes the state chamber representatives went to Crook county, on which he makes the following report: "A large rock-filled dam is being constructed, and when completed will be 90 feet in height. The canal and ditches have already been constructed and with the completion of the reservoir about the first of next year, the system will be put into actual use. Crook county too has a large amount of splendid land, which has little value without irrigation, but with the completion of the present system, the district has a splendid future."

CROOK COUNTY'S NEEDS

"It was hard to realize that Crook county supplies about half of the stock brought to the Portland markets. The county needs its population increased at least 10 times." From Crook county Bramwell's itinerary led him through Wasco, where he reports seeing very good crops of wheat, which the growers were disposing of at high prices. While in the city of The Dalles he really congested now, an opposite condition prevails in the rural sections, where 50,000 more people are needed. Concerning Wasco county Bramwell says: "While the irrigation of Wasco county

is not very extensive, reservoirs can be constructed and the plug waters held and with the semi-tropical conditions there it can be made the most wonderful county in Oregon in the production of food. I saw blackberries and loganberries in that district that excel in size and quality anything I ever saw produced. It can become one of the wealthiest counties in the state."

CHIEF YEOMAN MARK ALLEN BACK AFTER TWO YEARS' SERVICE

He Was First Naval Recruit Enlisted in Portland Following War Declaration.

Chief Yeoman Mark McAllen of the United States naval forces, son of Mr. and Mrs. Dan McAllen and the first naval recruit to be enlisted in Portland after declaration of war with Germany, returned to Portland Wednesday after a service of nearly two and half years. McAllen was formerly an employe in the traffic department of the Southern Pacific and a few hours after war was declared in April, 1917, he went to the local recruiting station and offered himself for service. He was about an inch under the height required, but was accepted for duty. On April 17, 1917, he was assigned to the Saratoga at Bremerton, and in October of the same year went on Pacific coast patrol duty. Shortly after that McAllen went to the East coast for convoy duty and in June, 1918, joined the United States mine laying force in Scotland, where he remained until last month. "It was a giant task, laying the string of mines that were intended to destroy the submarines," says McAllen. "We succeeded eventually in closing all exits. Since the signing of the armistice a great force of men has been busy cleaning up the mines, but there are many in the North sea that it will be a long time before they are all gathered in."

Pioneer Woman of Dallas Passes on At Age of 61 Years

Dallas, Sept. 20.—Mrs. Rachael Todd, a pioneer, died here September 12. She was born in Nebraska 61 years ago and came with her parents across the plains to Oregon when a young girl. For several years she lived in Portland and in Molalla, coming to Dallas nine years ago. She is survived by one son, Dr. E. R. Todd of Molalla.

Lieutenant Himes Returns

Dallas, Sept. 20.—First Lieutenant Edward J. Himes, former city engineer of Dallas, arrived home from overseas service this week. He will reopen his office in this city.

Woman Fire Patrol Back

Dallas, Sept. 20.—Miss Nell Southworth has returned to her home in this city after spending the summer as a forest fire patrol in Lane county. Miss Southworth, who is a student at the University of Oregon, held a lookout station alone, for several weeks, her nearest neighbor being six miles distant.

Fatalities Lacking In Week's Report

Salem, Sept. 20.—There were 458 accidents, none fatal, reported to the state industrial accident commission during the week ended September 18. Of the total, 427 were subject to benefits under the provisions of the workmen's compensation act. If were from firms and corporations which had rejected the law and 14 were from public utility corporations not subject to the provisions of the act.

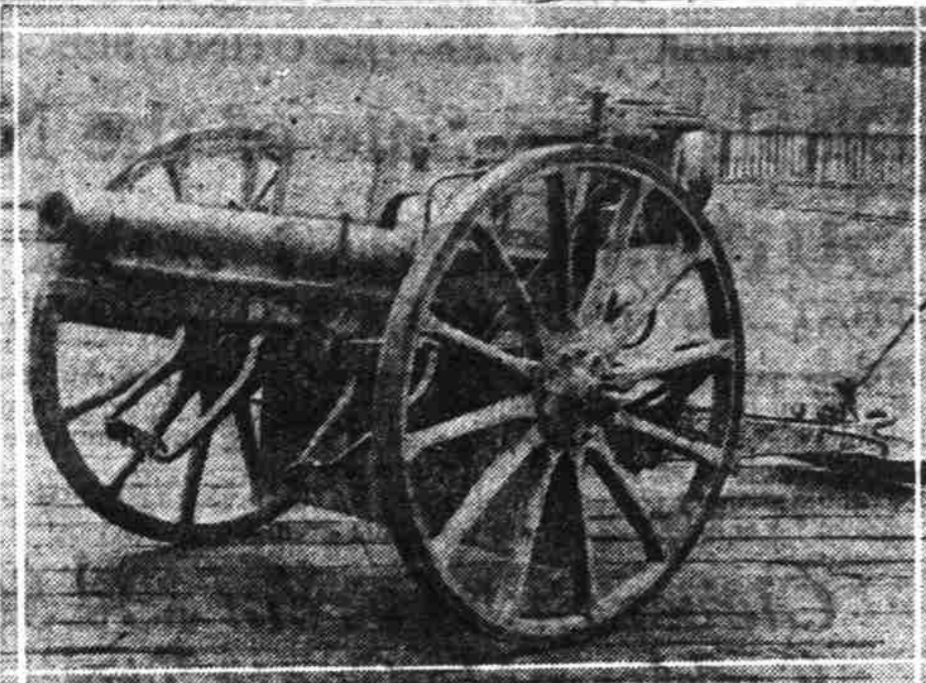
3,319,451 Soldiers Demobilized

Washington, Sept. 20.—(U. N. S.)—Since November 11, 3,319,451 officers and men of the United States army have been demobilized, the war department announced this afternoon. The sailings from abroad total 1,312,559 and enlistments 116,698. Of the latter, 4171 men entered service with the American expeditionary force in Europe and 4215 in Siberia.

Highway Link to Be Opened

Aberdeen, Wash., Sept. 20.—The Aberdeen-Montesano link of the Olympic highway, which is being paved, will be opened to travel about November 1.

PORTLAND WINS CANNON



Trophy from western battlefront brought to city

Covered with rust and much battered and marred from hard usage on the western battle front, a 73 millimeter German field piece arrived Tuesday afternoon addressed to Robert E. Smith, president of the Title & Trust company. The cannon was won by the city of Portland for having placed the largest oversubscriptions to the fifth Liberty loan among the class A cities of the twelfth federal reserve district.

The cannon was captured by troops from the Northwestern states in an engagement in Northern France. It has been turned over to Edward Cookingham, executive chairman of the Oregon state Liberty loan committee, and will be presented by him to the mayor and city council. According to plans now being outlined the cannon will find a permanent resting place in the city park.

is not very extensive, reservoirs can be constructed and the plug waters held and with the semi-tropical conditions there it can be made the most wonderful county in Oregon in the production of food. I saw blackberries and loganberries in that district that excel in size and quality anything I ever saw produced. It can become one of the wealthiest counties in the state."

Autos by Thousand Carry Mortgages, New Law Reveals

Salem, Sept. 20.—Since May 21, 1917, when the law went into effect in Oregon requiring that a certificate of the county clerk be filed with the secretary of state where a chattel mortgage covered a motor vehicle or migratory chattel, as it is designated in the act, notices have been received in the office of the secretary of state of the filing of 3348 chattel mortgages in the various counties of Oregon.

Minister to Sweden Returns

Washington, Sept. 20.—(U. N. S.)—Nelson Morris, American minister to Sweden, arrived back at Stockholm September 15, after a visit to the United States, the state department announced this afternoon.

Have You REALLY Heard the New All Record

The Brunswick

ALL PHONOGRAPHS IN ONE

Pioneer Woman of Dallas Passes on At Age of 61 Years

Lieutenant Himes Returns

Woman Fire Patrol Back

Fatalities Lacking In Week's Report

3,319,451 Soldiers Demobilized

Highway Link to Be Opened

Autos by Thousand Carry Mortgages, New Law Reveals

Chief Yeoman Mark Allen Back After Two Years' Service

Much Splendid Land

Central Oregon Needs 200,000 More Settlers

Five Counties Progressing

Report of Vice President Bramwell of State Chamber of Commerce, Back From Tour.

Cheap Land in Excellent Stock Raising Districts Would Profitably Support Thousands.

Central Oregon is in absolute need of over 200,000 more settlers to develop its lands.

Several hundred thousand more citizens could be easily accommodated and there is a great shortage of labor just east of the Cascade mountains.

Residents are capitalizing the natural advantages of this district and a prosperous condition prevails throughout.

These and other important facts were brought to the attention of F. S. Bramwell, vice-president of the State Chamber of Commerce, who has just returned from making a survey of conditions in Klamath, Lake, Deschutes, Crook and Wasco counties.

Rapid strides in industrial and agricultural development are being made in Klamath county,

and anyone would do well to investigate the prevalent prosperous conditions.

The lumber industry is bringing a great amount of money into the district.

It is stated that this industry alone has a payroll of \$250,000 a month.

Agriculture in Klamath county is still in its infancy, in comparison to the development residents hope to make soon.

Although there is a large acreage under cultivation, Klamath county people have in mind the needed development of several irrigation projects and contemplate improving approximately 150,000 acres.

Klamath is particularly adapted to stock raising and agriculture and capable of supporting 50,000 people more than it has at the present.

From Klamath county Bramwell covered the entire territory of Lake county, where he was surprised to find so much splendid land available.

I had been given to understand that on account of extreme climatic conditions in this section,

that Lake county was fit only for raising stock and that I find this absolutely incorrect.

The Lake district has tens of thousands of acres of splendid sage brush land, the equal of which I have seen in no other district in the state.

Water supply at present is inadequate for development of this land, but I was told that the residents of this district contemplate building two large reservoirs sufficient to care for 100,000 acres.

Corn, melons, potatoes and fine varieties of vegetables were growing everywhere.

Lake county needs 25,000 more people.

Lake county has about 125,000 sheep and 50,000 cattle, with an assessed valuation of approximately \$12,000,000.

Land is cheap all through this section and business men will find it well to investigate conditions there.

In Deschutes county business was found in excellent condition by Bramwell who reports a great amount of new land being brought into cultivation and a spirit of thrift prevailing everywhere.

From Deschutes the state chamber representatives went to Crook county, on which he makes the following report:

A large rock-filled dam is being constructed, and when completed will be 90 feet in height.

The canal and ditches have already been constructed and with the completion of the reservoir about the first of next year, the system will be put into actual use.

Crook county too has a large amount of splendid land, which has little value without irrigation, but with the completion of the present system, the district has a splendid future.

Crook county's needs

It was hard to realize that Crook county supplies about half of the stock brought to the Portland markets.

The county needs its population increased at least 10 times.

From Crook county Bramwell's itinerary led him through Wasco, where he reports seeing very good crops of wheat, which the growers were disposing of at high prices.

While in the city of The Dalles he really congested now, an opposite condition prevails in the rural sections, where 50,000 more people are needed.

Concerning Wasco county Bramwell says:

While the irrigation of Wasco county is not very extensive, reservoirs can be constructed and the plug waters held and with the semi-tropical conditions there it can be made the most wonderful county in Oregon in the production of food.

I saw blackberries and loganberries in that district that excel in size and quality anything I ever saw produced.

It can become one of the wealthiest counties in the state.

Autos by Thousand Carry Mortgages, New Law Reveals

Chief Yeoman Mark Allen Back After Two Years' Service

Much Splendid Land

Central Oregon Needs 200,000 More Settlers

Five Counties Progressing

Report of Vice President Bramwell of State Chamber of Commerce, Back From Tour.

Cheap Land in Excellent Stock Raising Districts Would Profitably Support Thousands.

Central Oregon is in absolute need of over 200,000 more settlers to develop its lands.

Several hundred thousand more citizens could be easily accommodated and there is a great shortage of labor just east of the Cascade mountains.

Residents are capitalizing the natural advantages of this district and a prosperous condition prevails throughout.

These and other important facts were brought to the attention of F. S. Bramwell, vice-president of the State Chamber of Commerce, who has just returned from making a survey of conditions in Klamath, Lake, Deschutes, Crook and Wasco counties.

Rapid strides in industrial and agricultural development are being made in Klamath county,

and anyone would do well to investigate the prevalent prosperous conditions.

The lumber industry is bringing a great amount of money into the district.

It is stated that this industry alone has a payroll of \$250,000 a month.

Agriculture in Klamath county is still in its infancy, in comparison to the development residents hope to make soon.

Although there is a large acreage under cultivation, Klamath county people have in mind the needed development of several irrigation projects and contemplate improving approximately 150,000 acres.

Klamath is particularly adapted to stock raising and agriculture and capable of supporting 50,000 people more than it has at the present.

From Klamath county Bramwell covered the entire territory of Lake county, where he was surprised to find so much splendid land available.

I had been given to understand that on account of extreme climatic conditions in this section,

that Lake county was fit only for raising stock and that I find this absolutely incorrect.

The Lake district has tens of thousands of acres of splendid sage brush land, the equal of which I have seen in no other district in the state.

Water supply at present is inadequate for development of this land, but I was told that the residents of this district contemplate building two large reservoirs sufficient to care for 100,000 acres.

Corn, melons, potatoes and fine varieties of vegetables were growing everywhere.

Lake county needs 25,000 more people.

Lake county has about 125,000 sheep and 50,000 cattle, with an assessed valuation of approximately \$12,000,000.

Land is cheap all through this section and business men will find it well to investigate conditions there.

In Deschutes county business was found in excellent condition by Bramwell who reports a great amount of new land being brought into cultivation and a spirit of thrift prevailing everywhere.

From Deschutes the state chamber representatives went to Crook county, on which he makes the following report:

A large rock-filled dam is being constructed, and when completed will be 90 feet in height.

The canal and ditches have already been constructed and with the completion of the reservoir about the first of next year, the system will be put into actual use.

Crook county too has a large amount of splendid land, which has little value without irrigation, but with the completion of the present system, the district has a splendid future.

Crook county's needs

It was hard to realize that Crook county supplies about half of the stock brought to the Portland markets.

The county needs its population increased at least 10 times.

From Crook county Bramwell's itinerary led him through Wasco, where he reports seeing very good crops of wheat, which the growers were disposing of at high prices.

While in the city of The Dalles he really congested now, an opposite condition prevails in the rural sections, where 50,000 more people are needed.

Concerning Wasco county Bramwell says:

While the irrigation of Wasco county is not very extensive, reservoirs can be constructed and the plug waters held and with the semi-tropical conditions there it can be made the most wonderful county in Oregon in the production of food.

I saw blackberries and loganberries in that district that excel in size and quality anything I ever saw produced.

It can become one of the wealthiest counties in the state.

Autos by Thousand Carry Mortgages, New Law Reveals

Chief Yeoman Mark Allen Back After Two Years' Service

Much Splendid Land

Central Oregon Needs 200,000 More Settlers

Five Counties Progressing

Report of Vice President Bramwell of State Chamber of Commerce, Back From Tour.

Cheap Land in Excellent Stock Raising Districts Would Profitably Support Thousands.

Central Oregon is in absolute need of over 200,000 more settlers to develop its lands.

Several hundred thousand more citizens could be easily accommodated and there is a great shortage of labor just east of the Cascade mountains.

Residents are capitalizing the natural advantages of this district and a prosperous condition prevails throughout.

These and other important facts were brought to the attention of F. S. Bramwell, vice-president of the State Chamber of Commerce, who has just returned from making a survey of conditions in Klamath, Lake, Deschutes, Crook and Wasco counties.

Rapid strides in industrial and agricultural development are being made in Klamath county,

and anyone would do well to investigate the prevalent prosperous conditions.

The lumber industry is bringing a great amount of money into the district.

It is stated that this industry alone has a payroll of \$250,000 a month.

Agriculture in Klamath county is still in its infancy, in comparison to the development residents hope to make soon.

Although there is a large acreage under cultivation, Klamath county people have in mind the needed development of several irrigation projects and contemplate improving approximately 150,000 acres.

Klamath is particularly adapted to stock raising and agriculture and capable of supporting 50,000 people more than it has at the present.

From Klamath county Bramwell covered the entire territory of Lake county, where he was surprised to find so much splendid land available.

I had been given to understand that on account of extreme climatic conditions in this section,

that Lake county was fit only for raising stock and that I find this absolutely incorrect.

The Lake district has tens of thousands of acres of splendid sage brush land, the equal of which I have seen in no other district in the state.

Water supply at present is inadequate for development of this land, but I was told that the residents of this district contemplate building two large reservoirs sufficient to care for 100,000 acres.

Corn, melons, potatoes and fine varieties of vegetables were growing everywhere.

Lake county needs 25,000 more people.

Lake county has about 125,000 sheep and 50,000 cattle, with an assessed valuation of approximately \$12,000,000.

Land is cheap all through this section and business men will find it well to investigate conditions there.

In Deschutes county business was found in excellent condition by Bramwell who reports a great amount of new land being brought into cultivation and a spirit of thrift prevailing everywhere.

From Deschutes the state chamber representatives went to Crook county, on which he makes the following report:

A large rock-filled dam is being constructed, and when completed will be 90 feet in height.

The canal and ditches have already been constructed and with the completion of the reservoir about the first of next year, the system will be put into actual use.

Crook county too has a large amount of splendid land, which has little value without irrigation, but with the completion of the present system, the district has a splendid future.

Crook county's needs

It was hard to realize that Crook county supplies about half of the stock brought to the Portland markets.

The county needs its population increased at least 10 times.

From Crook county Bramwell's itinerary led him through Wasco, where he reports seeing very good crops of wheat, which the growers were disposing of at high prices.

While in the city of The Dalles he really congested now, an opposite condition prevails in the rural sections, where 50,000 more people are needed.

Concerning Wasco county Bramwell says:

While the irrigation of Wasco county is not very extensive, reservoirs can be constructed and the plug waters held and with the semi-tropical conditions there it can be made the most wonderful county in Oregon in the production of food.

I saw blackberries and loganberries in that district that excel in size and quality anything I ever saw produced.

It can become one of the wealthiest counties in the state.

Autos by Thousand Carry Mortgages, New Law Reveals

Chief Yeoman Mark Allen Back After Two Years' Service

Much Splendid Land

Central Oregon Needs 200,000 More Settlers

Five Counties Progressing

Report of Vice President Bramwell of State Chamber of Commerce, Back From Tour.

Cheap Land in Excellent Stock Raising Districts Would Profitably Support Thousands.

Central Oregon is in absolute need of over 200,000 more settlers to develop its lands.

Several hundred thousand more citizens could be easily accommodated and there is a great shortage of labor just east of the Cascade mountains.

Residents are capitalizing the natural advantages of this district and a prosperous condition prevails throughout.

These and other important facts were brought to the attention of F. S. Bramwell, vice-president of the State Chamber of Commerce, who has just returned from making a survey of conditions in Klamath, Lake, Deschutes, Crook and Wasco counties.

Rapid strides in industrial and agricultural development are being made in Klamath county,

and anyone would do well to investigate the prevalent prosperous conditions.

The lumber industry is bringing a great amount of money into the district.

It is stated that this industry alone has a payroll of \$250,000 a month.

Agriculture in Klamath county is still in its infancy, in comparison to the development residents hope to make soon.

Although there is a large acreage under cultivation, Klamath county people have in mind the needed development of several irrigation projects and contemplate improving approximately 150,000 acres.

Klamath is particularly adapted to stock raising and agriculture and capable of supporting 50,000 people more than it has at the present.

From Klamath county Bramwell covered the entire territory of Lake county, where he was surprised to find so much splendid land available.

I had been given to understand that on account of extreme climatic conditions in this section,

that Lake county was fit only for raising stock and that I find this absolutely incorrect.

The Lake district has tens of thousands of acres of splendid sage brush land, the equal of which I have seen in no other district in the state.

Water supply at present is inadequate for development of this land, but I was told that the residents of this district contemplate building two large reservoirs sufficient to care for 100,000 acres.

Corn, melons, potatoes and fine varieties of vegetables were growing everywhere.

Lake county needs 25,000 more people.

Lake county has about 125,000 sheep and 50,000 cattle, with an assessed valuation of approximately \$12,000,000.

Land is cheap all through this section and business men will find it well to investigate conditions there.

In Deschutes county business was found in excellent condition by Bramwell who reports a great amount of new land being brought into cultivation and a spirit of thrift prevailing everywhere.