

# M'KENZIE PASS GOAL OF HOLIDAY MOTORISTS' TOUR

C. F. Wright and J. A. Keating Pilot Two Cars to Within Seven Miles of the Summit.

## GOING FOUND SATISFACTORY

Reports of Road Conditions, However, Depend Largely on the Motorists' Experience.

All are familiar with the old saying about what is food for one is poison for another. This thought has particular application to the varied attitudes towards a given stretch of road entertained by different motorists who have traversed it.

So wedded has the average motorist become to the smooth-going of the hard surfaced road that even the kind of dirt road that satisfied a few years ago nowadays is apt to be branded as poor. Then, too, there is another and important factor that enters into the judgment one passes on a piece of road. Aggravating circumstances arising from tire or engine trouble for which the road may be in no way responsible may compel the condemnation of it by the motorist who has suffered such inconvenience, while the one who has passed over the same road with flying colors will acclaim it with enthusiasm.

So it is that individual opinions as to what or that road necessarily are inspired by a certain element of personal bias that compels such opinions to be taken with that bias in view. Current judgment on the average road is an article of opinion regarding a wasdeville bill. Too much depends on the state of one's mind or disposition, or both.

### OPINIONS VARY

All of which is called to mind by the fact that in last Sunday's Journal there was published an interesting and informing account of a trip over the North Bank highway, made by C. F. Wright of Ballou & Wright, and one of the most active workers in the Portland Automobile club. Mr. Wright is an experienced motorist of years' standing. He entertains a rational philosophy concerning road conditions which in brief is that all roads in the Oregon country are good, under construction, or bad. In his account of his North Bank highway trip he gave the road a more or less clean bill, as befits a dirt road, since which time a number of other motorists have taken issue with him. Which is indicative that road conditions are subject for personal opinion, only to be ascertained by experience.

During the three-day holiday following the Fourth, Mr. Wright and family enjoyed a 400-mile trip up the McKenzie river and return.

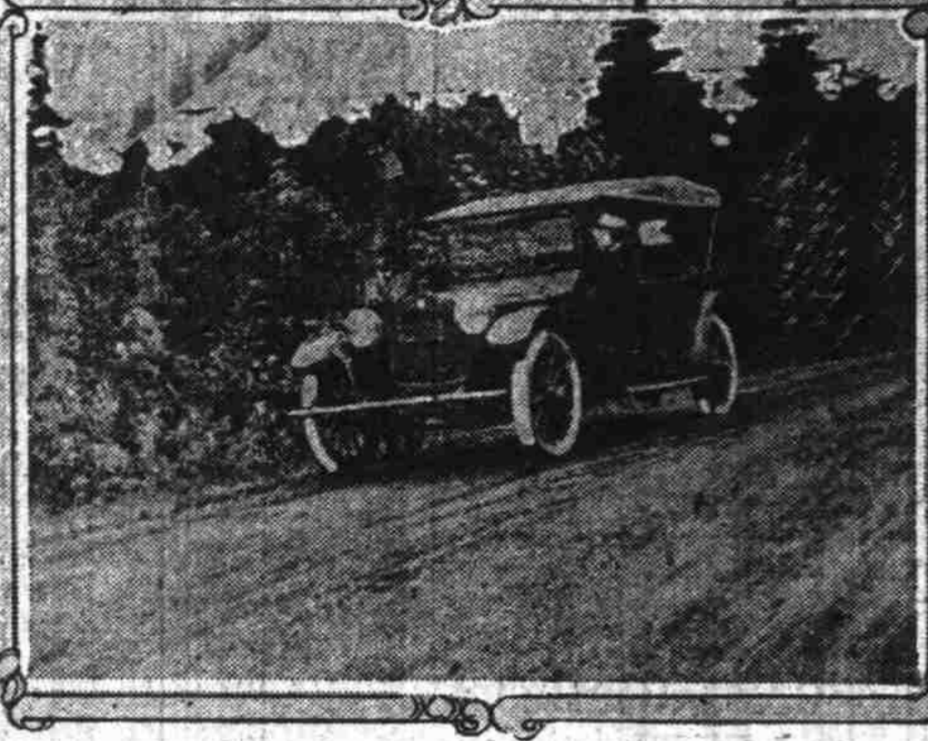
The trip from Portland to Eugene, a distance of approximately 125 miles was made in five hours via the west side route. The going on this leg of the journey was found satisfactory, including a detour between Monroe and Junction City. "However, the motorist should remember," cautions Mr. Wright, "that no improvement work is being done on the dirt and macadam roads included within Oregon's comprehensive paving program."

### UP THE M'KENZIE

From Eugene the two cars were driven eastward a distance of 73 miles over the McKenzie pass to within seven miles of the summit of the Cascades, where the new road is closed on account of construction work. This does not mean that the McKenzie pass cannot be traversed into the Bend country for the old road is open, and Mr. Wright states that he passed a number of cars that had been driven over the divide.

The Wright and Keating parties camped near this spot on the second night, and on Saturday morning hiked two miles to Lost Lake. They returned to Portland via Eugene, visiting Belknap and Foley Springs en route, driving the 125 miles between Eugene and Portland in 5 hours and 15 minutes.

## ON TRIP TO RAINIER PARK



Hupmobile that carried A. B. Manley-C. M. Menzies party on run to Rainier National Park, and scene by an inviting wayside spring.

### Wallowa-Lewiston Highway Suggested

A new interstate highway suggested is from Wallowa county to Lewiston, Idaho, where connection with the Idaho and Washington state systems could be made. A movement has been started in Asotin county, Washington, for extending the Asotin-Anatone road from Anatone to the Grand Ronde river at the Oregon line to connect with Wallowa county.

### Automobile Travel Broke All Records

White Salmon, July 12.—Automobile travel across the Columbia river between White Salmon and Hood River last Sunday broke all records. One hundred and forty-five cars were transferred by the Panama, the White Salmon-Hood River ferry.

### Road to Newaukum Bridge Is Granted

Chehalis, July 12.—A petition of the property owners in the Union district, to construct a concrete roadway leading off the paved Pacific highway, east of Chehalis, to the Newaukum bridge, has been granted by the Lewis county commissioners. The pavement is to be nine feet wide, on one side of the roadway, a distance of about four and a half miles.

### Pennsylvania Town Has Lots of Autos

There are reported to be close to 3000 cars at Elwood City, Pa. (which contains 10,000 people), the majority being Fords, with Cadillacs and Packards next in order. This percentage would make every third person there an owner.

## MELTING OF SNOW SOON WILL ALLOW TRIP TO RAINIER

Portland Motorists Looking Forward to Tour Which Affords Most Imposing Scenery.

### SEVERAL VISIT ENTRANCE

Local Dealer Takes Side Trip While Visiting Tacoma to Take In Races on July Fourth.

Portland motorists are looking forward to the melting of the snows to an extent that will permit of the automobile journey to the famous Paradise valley in Mount Rainier National park. Infact in this drive, declared one of the most imposing in the Northwest, has been given reasonable impetus as a result of the races held at the Tacoma speedway on July 4, a number of Portland drivers who attended the meet having made a side trip from Tacoma to the entrance of the park.

Among these were A. B. Manley and Charles M. Menzies, local Hupmobile dealers, and from the infirmation they gathered along the way the warm weather will soon melt the snow, and make the road to Paradise valley passable, although last week it was reported that snow banks, in places 10 feet deep, blocked the highway.

### FINE ROAD TO PARK

"There is a splendid road from Tacoma to the park entrance," said Mr. Manley, "and the objective of the first lap of the journey by automobile is usually Longmire Springs, seven miles within the park's gates. The ride, either in the sunlight or moonlight, is a revelation of scenic beauty, and those who have made the trip a number of times declare that on each occasion new won-

ders of nature were opened to them."

At Longmire Springs, where there are 25 springs of mineral water, there are hotel accommodations, and from the inn porch Mount Rainier itself may be admired in all its glory. Atmospheric conditions make it seem nearer or farther away than it really is, but from Longmire the mountain is really eight miles distant in an air line. It rises majestically from its forest fringe, and of all the great mountains of the Northwest is probably second only to Mount Hood in real grandeur.

### GLACIER IS INTERESTING

"Uniquely glacier is one of the interesting features of the mountain, and the road to this point has an average grade of 4.5 per cent. From the glacier gushes the Nisqually river. There are a score or more of glacier-born streams passed en route to Paradise valley, the east of the government. However, and but five miles from where the mountain rises 8700 feet, the altitude at the Valley Inn being 5750 feet.

The wonderful fields of Alpine flowers are probably the first attraction in the valley, though the snow fields of Paradise glacier afford entertainment, amusement and wonderment for the city folks, basked in the city's ovens of asphalt and concrete.

Rainier's wild flower beds have been immortalized by John Muir, the naturalist, who said of them: "Above the forests there is a zone of the loveliest flowers, 60 miles in circuit and nearly two-miles wide, so closely planted and so luxuriant that it seems as if nature, glad to make an open space between woods so dense, and ice so deep, was economizing the precious ground and trying to see how many of her darlings she could get together in one mountain wreath—daisies, anemones, columbine, erythroniums, larkspurs, and—others, among which we wade—most deep—the bright corollas in myriads touching petal to petal. Altogether this is the richest sub-Alpine garden I have ever found, a perfect flower Elysium."

In driving from Tacoma to Portland Mr. Manley encountered some eight or 10 miles of bad road, between Kelso and Vancouver, where construction work is in progress. Otherwise the regular Pacific highway was found to be in good condition.

### Carrying Jack

Undoubtedly the jack is one of the most difficult tools in the car's equipment in the matter of carrying it. If it is carried loosely in the tool box, it is so heavy that it is likely to break something, and yet it must be so located

that it can be got at easily when needed. In many cases it is a good plan to carry the jack strapped to the running boards or the footboard.

## Motor Trucks Are To Replace Camels

Lafayette, Ind., July 12.—(L. N. S.)—Camels in Southern Asia are going to have competitors in American made motor trucks. A local firm that manufactures steering gears has been informed by a motor truck company that 30 motor trucks, equipped with their steering gears, have been shipped to the Agricultural Colonization company for use in Central Asia, west of the great Gobi desert. The trucks will cover a distance of 2000 miles between Tien-Tsin, China, and Kulja, the company's headquarters. They will replace a caravan company that now uses 4000 camels.

## Grind Pump Spindle To Prevent Leaking

In some instances the stem of the water pump has become so worn, usually in annular groove, that the pump cannot be packed to make it tight. When this happens the only thing to do is to remove the spindle, true it up on the lathe and have a new bushing fitted to it. After this if hemp is soaked in tallow, wicking or some other good packing is used the joint can be made tight.

## Ford to Purchase 150,000 Tons Steel

Conclusive evidence of huge extent of the plans of the Ford Motor company

for the coming year may be found in the recent announcement of the Detroit States Steel corporation to the effect that the Ford makers had placed an order with them for 150,000 tons of steel, with the possibility of an increase of this amount to 200,000 tons.

## Good Cleaner for Automobiles Given

Washing soda, kerosene and plain soap and water should be the cleaning agents used by car owners for cleaning parts, tools, etc., about the garage. Gasoline is not as good as these others, and it costs considerably more. For taking grease spots out of clothing, some of the inflammable fluids now on the market are better than our present grades of gasoline.

Don't attempt to run the car on the electric starter.



More miles per gallon  
More miles on time



## Maxwell: advanced by fine engineering

**FIVE** decided improvements have been made in the Maxwell. One makes it look better. Another makes the electrical unit far more efficient. A third makes the engine run sweeter, steadier, and gives it advanced economy. A fourth adds a comfort in seating. A fifth produces increased durability in the top.

You get a Maxwell now with the famous Hot Spot and Ram's-horn and you find a rare delight in more power and more mileage at the old-time cost.

But it isn't a new model Maxwell. For this car is merely the chassis of five years ago with all the advances made in fine engineering.

This is the original chassis model of which 300,000 have been built to date—300,000 all alike basically, but each one better than the previous one.

Thus you get a sound, safe, extremely reliable car, refined to a degree, and at the same time you get the new improvements—and the price is only \$985 f. o. b. Detroit.

## C. L. Boss Automobile Co.

615-617 Washington Street, Portland

## Trailers

Let us solve your hauling problems

### Truck

4 Wheel—Semi and Pole Models  
2 to 10-ton capacity

### Automobile

2 and 4 Wheel Models  
750 lbs. to 2000 lbs. Capacity

Camping and Outing Sortien  
Two-Bed Trailers

Write for descriptive catalogue.  
Live dealers' wanted  
Oregon, Washington, Idaho

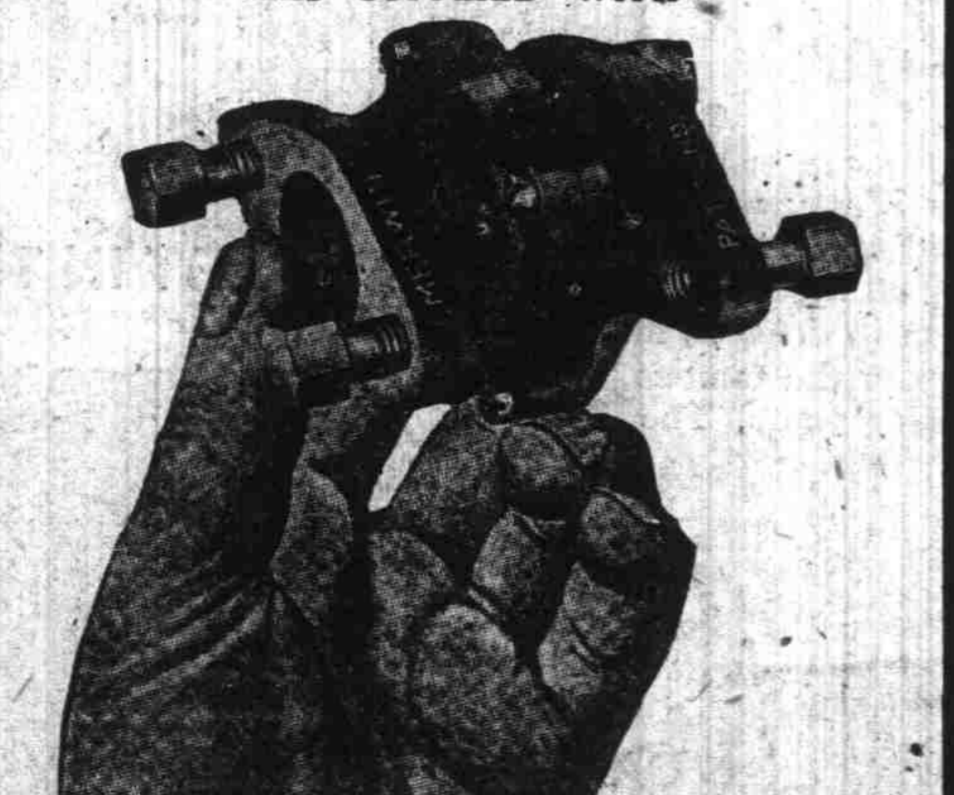
## WATT SHIPP TRAILER CO.

SALEM, OREGON  
Hickman Trailer Co.,  
Edgerton, Wis.

## WANTED!

A salesmanager; also three first-class salesmen for local automobile concern handling two popular lines. Replies held strictly confidential. Apply at once.  
S-264, Journal.

THOSE DELIGHTFUL SUMMER RIDES TO OREGON'S FAMED RESORTS WOULD BE MUCH MORE PLEASURABLE IF YOUR CAR WAS SUPPLIED WITH



## The Merwin Gas Mixer

And your trip would cost you much less money, for the reason that THE MIXTURE SAVES YOU GAS—20 PER CENT OR MORE—and in addition PROLONGS THE LIFE OF YOUR ENGINE by stopping the gasoline from parcolating through the piston into the lubricating oil. THE SCIENTIFIC AMERICAN SAYS THIS ADDS ONE THIRD TO THE ENGINE'S USEFULNESS! If this be TRUE AND IT IS—

**Why Don't You Buy a Merwin Mixer Now?**

Come to our factory, have one installed, and if you tell us, 30 days later, you do not want the device, WE'LL GIVE YOU YOUR MONEY BACK WITHOUT A WINCE! They cost \$7.50 for small cars and \$15 for large ones. They're the thing for gasoline engines of all kinds—launches, woodsaws, trucks—anywhere you place them.

Our Telephone is East 803  
**Automatic Manufacturing Company**  
440 Hancock Street, Portland, Or.

## DIAMOND T THE NATION'S FREIGHT CAR

### A Product of Specialization

Diamond T Trucks are produced in the finest exclusively truck-factory in America.

The full resources of this model plant, the combined experience and technical skill of the Diamond T organization, are concentrated upon DIAMOND T TRUCKS. Specialization is almost a religion with the builders of Diamond T.

Each Diamond T unit is the best and most suitable in its class, and is rigorously tested under exacting Diamond T standards. That is the keynote of Diamond T construction and the great factor in Diamond T success.

Five models—1 to 5 tons

In Our New Salesroom and Service Station AT 91 NINTH STREET NORTH

Diamond Truck Sales Agency, Inc.  
John R. Meldrum. August Judge.




## Marion County

has purchased another 3 1/2-ton GMC Truck. This makes six GMC Trucks purchased in four years. Satisfied customers mean repeat orders.

## Wentworth-Irvin, Inc.

Truck Headquarters  
200 SECOND STREET, CORNER TAYLOR

Next Time—Buy

# FISK

## TIRES



A remarkable Product. Every tire worth more than it costs.

The Over-size Non-Skid Fabric; The Big Fisk Cord; The Red Top, Extra Ply, Heavy Tread.

### GOOD LOOKING, GOOD VALUE TIRES

For Sale by Dealers