

Dairymen Say Bankruptcy Coming Unless Wholesale Price of Milk Raised

DAIRYMEN INSIST THEY ARE SELLING MILK BELOW COST

Retail Price Has Risen Only 60 Per Cent in Four Years While Production Cost Has Doubled.

QUIT BUSINESS IS THREAT

'We Cannot Go on Producing at a Loss Indefinitely,' Assertion Made at League Meeting.

ASTOUNDING figures upon the present day cost of production of milk were presented to the members of the Oregon Dairymen's League at a meeting held in Portland. While the retail price of milk has risen only 60 per cent during the last four years the average cost of production of milk and farm implements necessary for the dairymen, hay, feeds and other necessities, have increased from 117 to 225.83 per cent.

PUBLIC DOESN'T UNDERSTAND

"The trouble is that the public doesn't understand the problems we are up against. They are content to pay 120 per cent more for potatoes, 150 per cent more for strawberries, 150 per cent more for eggs, from 100 to 200 per cent more for meats, and from 120 to 250 per cent more for bread—and yet because we ask for a price at least representing cost of production, we are called baby killers or profiteers. We must get the public to understand some of the difficulties under which we are at present producing milk. The public must understand that their milk will cost them more—not because we dairymen want to charge them more—but simply because we are not at the present time receiving a wholesale price for our milk which is equal to the cost of production.

MILK FAMINE THREATENS

"Unless we can get a better price, sooner or later the public will be faced with a milk famine because we shall have to go out of business as dairymen. We cannot go on producing milk at a loss indefinitely."

A large and enthusiastic audience greeted Mr. Katz's remarks. A motion to increase the capital stock of the Oregon Dairymen's League was passed by the members. From remarks passed at the meeting it appears likely that in the not far distant future the dairymen will take the law into their own hands, operate their own creameries throughout the state—and may even go so far finally as to take a hand in retail distribution.

J. L. Scollard, president of the Washington Dairymen's League, who has just toured California, investigating the method of distribution, told the dairymen how the milk situation in that state has been handled. The problem appears to be one of more economic distribution for the public will not stand for much higher prices without being fully informed why.

INCREASED COSTS SHOWN

The following figures show some of the increased costs in dairying:


	1914	1918	Increase
2-gallon Tiger can	\$1.50	\$3.45	130
10-gallon Tiger can	2.43	6.09	126
16-quart Sanitary milk pail	1.50	3.00	100
12-quart Sanitary milk pail	.75	1.40	86
No. 10 DeLaval separator	90	117	30
Clas floating thermometer	50	1.75	250
Milk strainer	1.50	2.25	50
Stanchion	2.10	4.80	129
Milk cooler	15.00	27.75	85

The dairymen will hold a meeting next Friday at the Central library with the Portland distributors, at which a new retail price for milk will be set.

Did it ever occur to you that your cow is your manufacturing plant and as such is entitled to the same care and study that any business man gives his business?

BEEMAN
GARDEN TRACTOR

Takes the Place of a Horse
Plows, Harrows
Cultivates
Operates the Corn
Separator,
Pump,
Washer,
Machine,
Etc.



The Beeman Garden Tractor
will do anything that a 4-horsepower station n a r y gasoline engine will do. Handy on a large as well as a small farm.

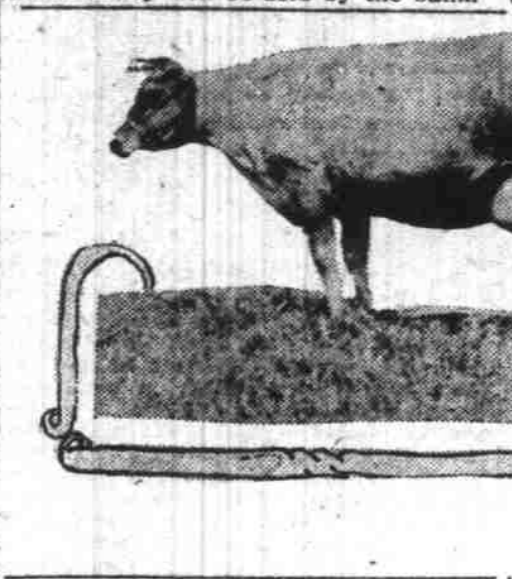
It is a Walking Gasoline Engine

Call or Write for Full Information and Catalog

Wentworth & Irwin
S. E. Cor. Second and Taylor Sts.
Portland, Ore.

35 Pigs Will Be Given to Children

Bend, June 21.—Thirty-five boys and girls in Deschutes county will receive 35 pigs next Wednesday afternoon. These boys and girls will be members of the First National Bank of Bend Pig club. As members they will be helped by the bank to raise their pigs and will be shown how to keep records of costs and increase in weights. After the pigs have grown to sufficient size for market they will be sold by the bank.



MILK TESTING ADDS TO NUMBER OF GOOD MILK COWS IN STATE

Report for Month of April Issued by Specialist in Charge of Work.

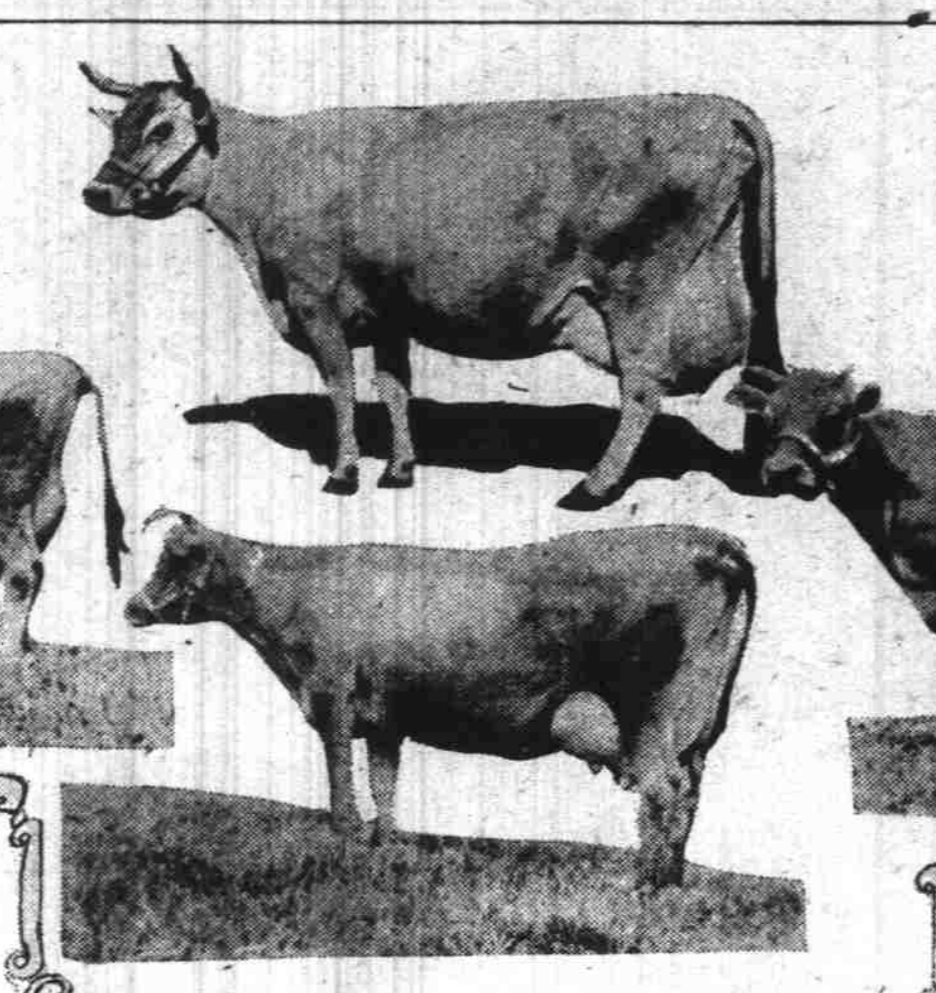
More good cows and fewer poor cows resulted from the work of the Oregon Cow Testing association for April, reports of which have just been issued by E. L. Westover, extension dairy specialist in charge for the United States department of agriculture and the state agricultural college. Here is a summary of the work:

Cows tested, 2497; cows sold for beef, 51; for milk, 21; total disposed of, 26; cows purchase, 18 grade, 13 registered; total added to dairy herds, 31; average pounds milk produced by all cows on test, 72.34; average pounds fat, 4.13 pounds; and the best herd in the association, which averaged 1233 pounds of milk and 33.02 pounds of fat. This honor herd belongs to Joe Durrer.

The best herd of the Nestucca association was Joe Schriber's, which averaged 1229 pounds of milk and 48.33 pounds of fat. Cope Bros. had the highest herd in the Bandon-Coquille association, making an average of 977.8 pounds of milk and 42.12 pounds of fat. Noah Black owns the big performers in the Smith and Umpqua association, which gave 889 pounds milk and 38.25 pounds fat as an average. Jasper Hougaard has the honor of owning the prize herd in the Clatsop county association, results not given. D.

When answering advertisements mention The Journal.

SOME OF ED CAREY'S CHAMPS



These cows were sold at record prices at the Carey sale this week

N. McNair owns the big producers in the Coquille and Myrtle Point association, making an average of 1032 pounds milk and 38.25 pounds fat.

Greatest Rye Crop in History of U. S. Harvested in 1918

More acres and more bushels of rye were harvested in 1918 than in any previous year in the history of the United States. From 1849 to 1909 rye production in the United States was practically stationary. From 1909 to 1918 the production was almost tripled, the greatest increase coming in 1917 and 1918.

Five years ago there was approximately one acre of rye for each 21 acres of wheat in the United States. In 1918 there was approximately one acre of rye for each 10 acres of wheat. The 1918 rye crop was more than 75,000,000 bushels.

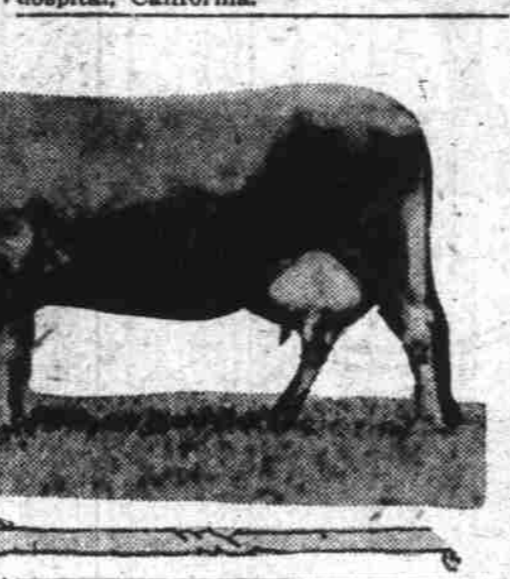
The world production of rye amounts to about one and two thirds billion bushels, somewhat less than half the annual wheat production. The United States department of agriculture thinks it probable, now that farmers are becoming familiar with the crop and its advantages, that rye will have a permanently larger place in American agriculture, and that from an agricultural point of view there should be a further considerable increase in production.

A few crops well chosen and properly cultivated are preferable to a miscellaneous assortment—no one of which will supply enough vegetables to make a full serving for the entire family.

When answering advertisements mention The Journal.

Holsteins on Way North to Be Bred

Tilly Alcartra and Raphaela Johanna Aaggie III, two of the world's greatest Holstein cows, are on their way to Seattle, Wash., where they will be bred to the bull, Carrator-King Sylvie, purchased at the last national Holstein sale for \$105,000. The cows were shipped from Woodland last week. The first is owned by A. W. Morris & Sons' Corporation, and the second by Napa State hospital, California.



in competition with meat the prevailing prices, according to the following milk and meat tables, vouched for as practically correct by P. S. Lucas, assistant professor of dairying at O. A. C.: (Milk at the given prices is as cheap food as various cuts of meat at given prices.)

Milk	Round	Sirloin	Mutton	Ham
10c	14c	16c	20c	26c
11c	15c	17c	21c	27c
12c	16c	18c	22c	28c
13c	17c	19c	23c	29c
14c	18c	20c	24c	30c
15c	19c	21c	25c	31c
16c	20c	22c	26c	32c
17c	21c	23c	27c	33c
18c	22c	24c	28c	34c
19c	23c	25c	29c	35c
20c	24c	26c	30c	36c

Milk prices at Corvallis are now 11 cents a quart. By examining the table, second line, it will be seen that round steak should sell at 15 cents a pound to yield food values as economically as the milk. As a matter of fact, local shops were quoting the best cuts of round steak at exactly double that figure.

The common load is the gardener's friend, because he lives upon the small insects that trouble the garden crops. A few toads in the garden will help keep it free of insects.

HUGE SHIPMENT OF FORDSON TRACTORS COMING TO OREGON

Seventy-One Carloads, 503 Machines, Will Soon Leave East—Consigned to Salem Firm.

What is believed to be the largest consignment of power farming machinery ever brought into the Northwest will leave Fort Dearborn, Mich., for Portland, Or., on July 1 next, when 71 carloads of Fordson tractors will leave the east consigned to the order of Vick Bros., Fordson tractor agents, at Salem.

This entire train load, according to George Vick, will contain 503 Fordson tractors, the majority of which have already been sold to Oregon farmers. They represent an investment of \$400,000. They are the entire output of the Fordson Tractor plant for one day. Placed end to end, they would form a chain over a mile in length.

There are now 43 dealers in the state of Oregon handling the Fordson tractor, according to Mr. Vick. Over seven hundred farmers in this state now own and operate Fordson tractors.

Vick Bros. will shortly remove their head offices from Salem to Portland. Announcement will be made within the next few days of the acquisition of a large warehouse and service plant in Portland—as soon as the necessary deeds are signed.

Poultrymen Will Go On Inspection Tour

Roseburg, June 21.—The poultrymen of the county are planning an excursion leaving this city on June 26 by autos to visit the principal Willamette valley poultry plants and the college farm at O. A. C. The excursion is under the direction of County Agent C. J. Hurd, who will show the poultrymen all the up-to-date poultry farms between Eugene and Portland. Five days will be spent and the commercial side of poultry will be thoroughly looked into. Much interest is being manifested by Douglas county poultrymen this season.

YET ANOTHER JERSEY BULL



Brave Engineer, owned by J. C. Brown of Shedd

H. W. STRONG TAKES LEASE OF THE COTTON FARM AT GRESHAM

Expecting Great Crop of Raspberries; 200 Pickers Will Be Needed.

H. W. Strong, well known attorney, has given up his law practice and taken a lease on the Cotton farm near Gresham. Mr. Strong has 50 acres in raspberries, blackberries, loganberries and blackberries. Early this spring he purchased a carload of commercial fertilizer and over 200 tons of sheep manure were used in addition, "with the result," said Mr. Strong, "that we expect to have a crop which will be a record for the entire Northwest. There is every indication, by using this fertilizer, that we will have a phenomenal yield of berries."

Our one trouble is to get sufficient pickers. We will require at least two hundred, and I have made arrangements to haul by autotruck all camp luggage to our farm free of charge from Portland. We will also furnish tents, wood, water and straw free. I noticed in The Journal some time ago an article advising that berry and fruit growers look to proper housing facilities for the pickers' families, and realizing this we are this year furnishing quarters such as I think I should like if I were one of the pickers myself.

The season for berry pickers in Gresham will commence the beginning of July and continue for about six weeks. Pickers are paid each day, and in the case of Mr. Strong's vineyard will receive a bonus at the end of the season.

The common cutworm is a cowardly rascal and rarely does his work in daylight when folks can see him. He watches and waits until the gardener has planted his cabbage, tomato or pepper plants, then sneaks out in the night and destroys the plants.

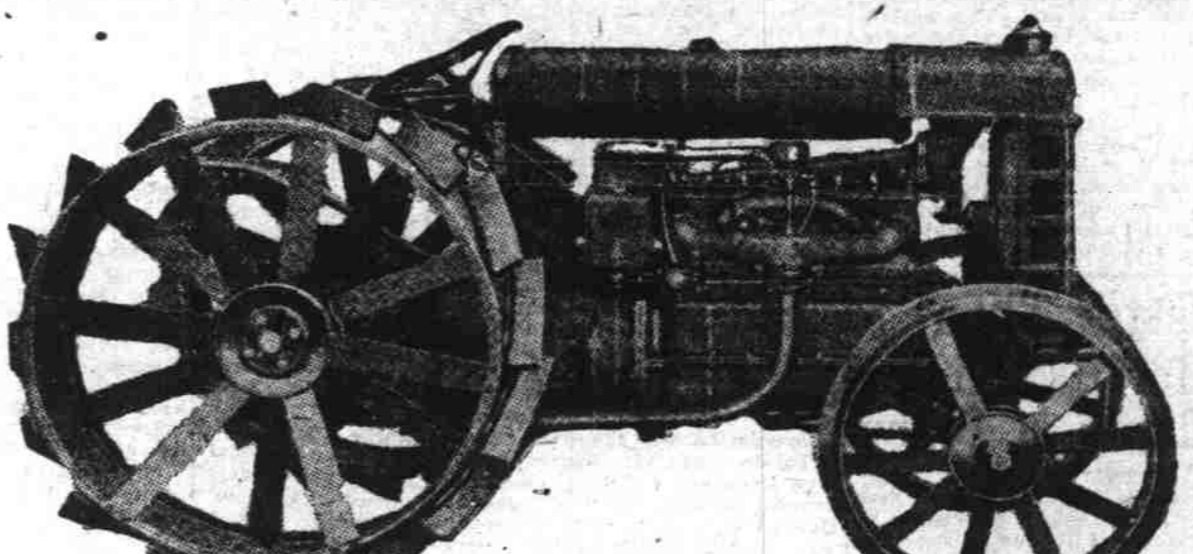
GREAT FARM OFFERINGS

Each issue of The Journal carries among THE JOURNAL "WANT" ADS wonderful offerings in FARMS and ACREAGE. If you fail to read them you are neglecting your greatest source of information.

PRICE REDUCED ON FORDSONS

OLD PRICE \$885
NOW
\$750

F. O. B. FACTORY



OLD PRICE \$885
NOW
\$750

F. O. B. FACTORY

Not only can you afford to buy a Fordson you cannot afford to be without one

We will be unable to supply the demand for Fordsons this coming fall. While there will be thousands of Fordson Tractors made, still, there will be some farm owners who want Fordsons and will delay their orders so long that it will be impossible to supply them. Make sure of getting your Fordson. Order it now. Start it to work for you right away. There are sufficient draw-bar and belt jobs on your farm to be done between now and fall to keep the Fordson busy earning money for you throughout the summer. And when fall comes, you will have your Fordson ready for the first fall job. You will be familiar with its operation, so that you will get 100% results throughout the year.

Pulls Two 14-Inch Plows—Operates on Cheap Kerosene—Runs Your Belt Machines

The Fordson will pull two 14-inch bottoms in the stiffest soils and still have enough reserve left over for the peak loads. The Fordson operates successfully, economically, on cheap kerosene. No raw fuel going through the exhaust—none passing down through the piston rings into the crankcase. And its 22 H. P. in the belt make it capable of running your grain separator, your corn husker, your huller, your silo filler, hay bailer; in short, it supplies a steady, economical, dependable power for all belt jobs within its rating.

Write for descriptive literature

VICK BROTHERS
DISTRIBUTORS
SALEM, OREGON

THE YELLOW CHASSIS TRUCKS WILL NOT BE ORPHANED

Many Trucks Now Sold in Oregon Will Be Orphans in the Next Few Months. Buy a Republic and Be Sure of Continuous Service.

ROBERTS MOTOR CAR CO., Inc.
Park and Everett Sts. 305 Main St.
Portland, Ore. Vancouver, Wash.

60c BUTTER FAT 60c MR. DAIRYMAN

We ARE and ALWAYS will be OVER THE TOP on butter fat PRICES.

This can only be done by AN INDEPENDENT operator, and we are the ONE INDEPENDENT creamery.

Ship US your CREAM; get the EXTRA PRICE. Our check by return mail for each shipment will convince you.

Peerless Butter Co.
45-47 Front St., Portland, Oregon
Reference to Our Responsibility: Bradstreet, Dun, or Ladd & Tilton Bank.